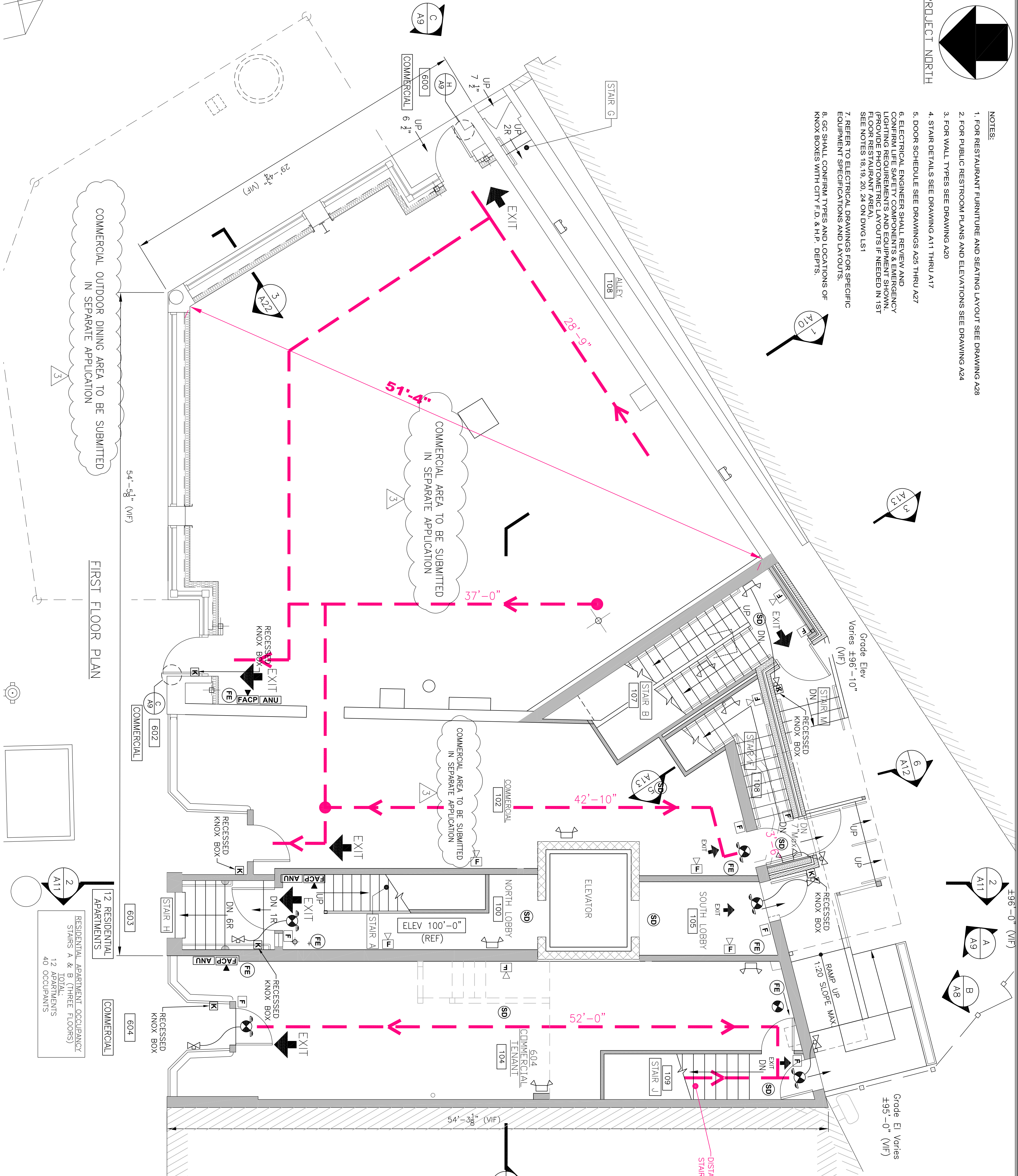


PROJECT NORTH

- NOTES:
1. FOR RESTAURANT FURNITURE AND SEATING LAYOUT SEE DRAWING A28
 2. FOR PUBLIC RESTROOM PLANS AND ELEVATIONS SEE DRAWING A24
 3. FOR WALL TYPES SEE DRAWING A20
 4. STAIR DETAILS SEE DRAWINGS A11 THRU A17
 5. DOOR SCHEDULE SEE DRAWINGS A25 THRU A27
 6. ELECTRICAL ENGINEER SHALL REVIEW AND CONFIRM LIFE SAFETY COMPONENTS & EMERGENCY LIGHTING REQUIREMENTS AND EQUIPMENT SHOWN. REVISIONS TO BE SHOWN ON SEPARATE FLOOR RESTAURANT AREA. SEE NOTES 18, 19, 20, 24 ON DWG LS1
 7. REFER TO ELECTRICAL DRAWINGS FOR SPECIFIC EQUIPMENT SPECIFICATIONS AND LAYOUTS.
 8. SG SHALL CONFIRM TYPES & LOCATIONS OF KNOX BOXES WITH CITY F.D. & H.P. DEPTS.



REFER TO ELECTRICAL DRAWINGS FOR EQUIPMENT SPECIFICATIONS AND LAYOUT

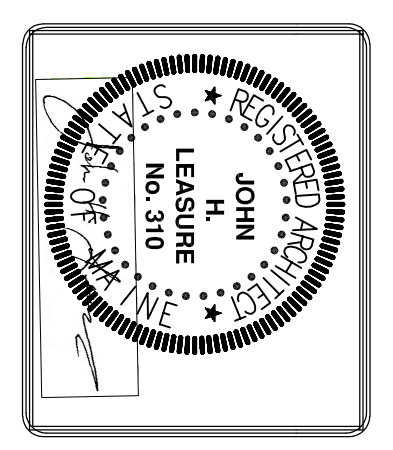
LEGEND

- (FT) EGRESS TRAVEL PATHS
- FE FIRE EXTINGUISHER
- EXTERIOR EMERGENCY LIGHT UNIT (W/NET LOCATION LISTED) DUAL-LITE (LED) MODEL DYN 6 WITH WIRE GUARD COLOR BY OWNER
- SELF CONTAINED EMERGENCY LIGHT DUAL-LITE (LED) LZ25N30L OR APP'D EQUAL 25 WATTS FOR 90 MINUTES COLOR BY OWNER
- INTERIOR REMOTE HEAD EMERGENCY LIGHT UNIT DUAL-LITE (LED) MODEL CPHD 1203L COLOR BY OWNER
- EXTERIOR REMOTE HEAD EMERGENCY LIGHT UNIT DUAL-LITE (LED) MODEL OCRD 1203L COLOR BY OWNER
- EXIT / EMERGENCY LIGHT COMBINATION COLOR BY OWNER
- EXIT LIGHT ILLUMINATED (UNSWITCHED) DUAL-LITE LX-LR-W-E OR APP'D EQUAL COLOR BY OWNER
- EXIT LIGHT ILLUMINATED (UNSWITCHED) [CHEVRON DIRECTIONAL ARROW]
- 30 MH F FIRE ALARM RUDIMINARY MOUNT 6" AF NUMBER - CANDELA RATING, MH - MINIMUM CL - CEILING MOUNTED NO DESIGNATION INDICATES 150d
- F FIRE ALARM PULL STATION MOUNT AT 48" AFF
- S FIRE ALARM VISUAL STROBE MOUNT 6" AF. NUMBER INDICATES CANDELA RATING CL DENOTES CEILING MOUNTED
- SD SYSTEM CONNECTED SMOKE / CARBON MONOXIDE DETECTOR PHOTOELECTRIC TYPE
- HD SYSTEM CONNECTED FIXED TEMPERATURE HEAT DETECTOR SYSTEM CONNECTED FIXED TEMPERATURE HEAT DETECTOR SYSTEM CONNECTED SMOKE DETECTOR, PHOTOELECTRIC TYPE
- CO SYSTEM CONNECTED CARBON MONOXIDE DETECTOR
- FACP FIRE ALARM CONTROL PANEL WITH DEDICATED TELEPHONE JACK
- ANU FIRE ALARM ANNUNCIATOR PANEL
- K KNOX BOX FIRE DEPT EMERGENCY KEY HOLDER

FIRST FLOOR PLAN
1/4" = 1'-0"
ENTIRE BUILDING FULLY SPRINKLERED PER NFPA 13

SHWARTZ BUILDING RENOVATIONS
600-604 CONGRESS STREET
PORTLAND, MAINE
FIRST FLOOR - LIFE SAFETY PLAN

REV.	DATE	STATUS
.	3-30-17	STATE FIRE MARSHAL SUBMISSION
1	4-28-17	SUBMITTED FOR PERMITS
3	6-26-17	COMMERCIAL-SEPARATE SUBMISSION



JOHN H. LEASURE ARCHITECT, INC.
6 Q STREET
SOUTH PORTLAND, MAINE 04106

