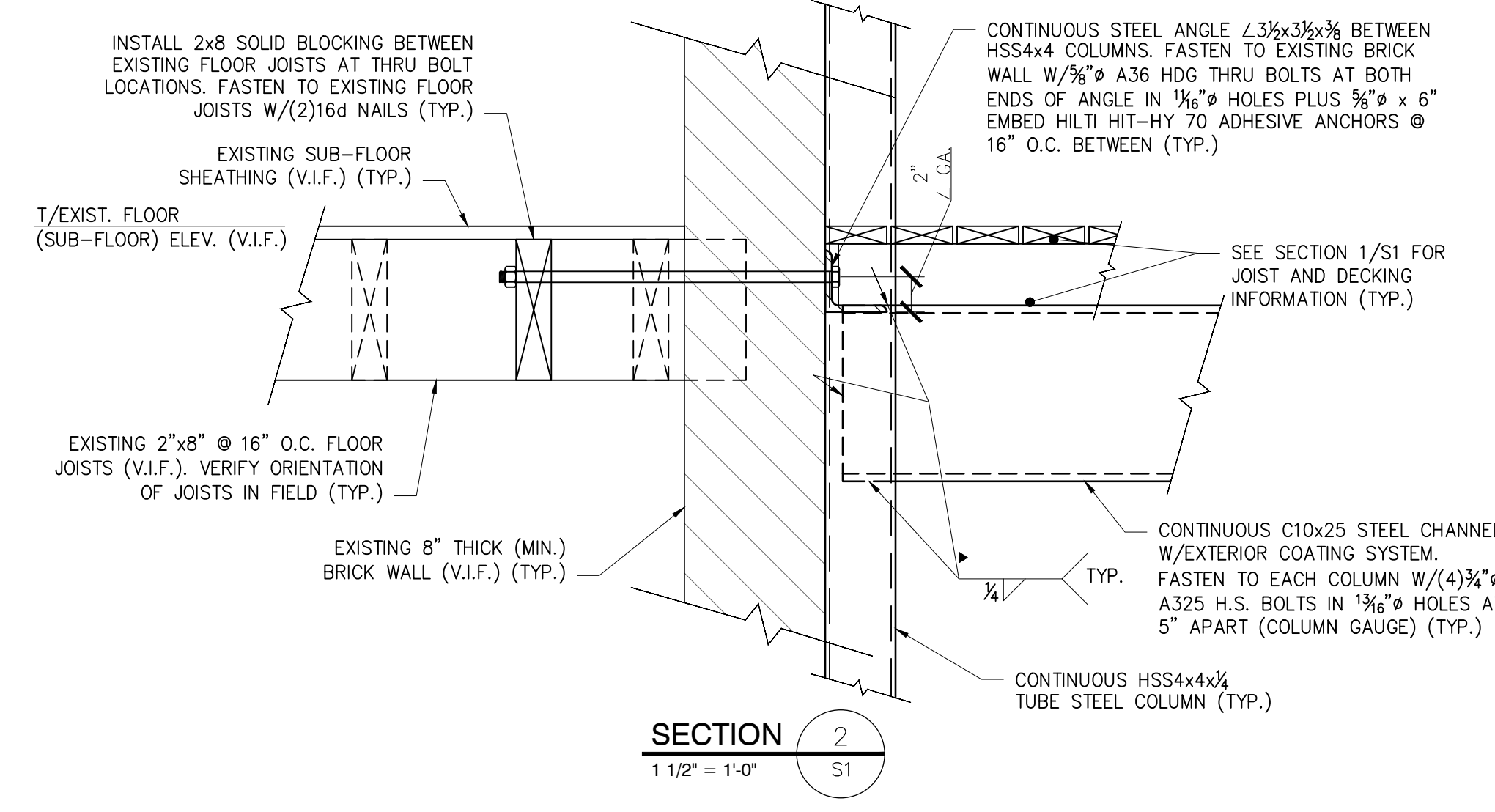
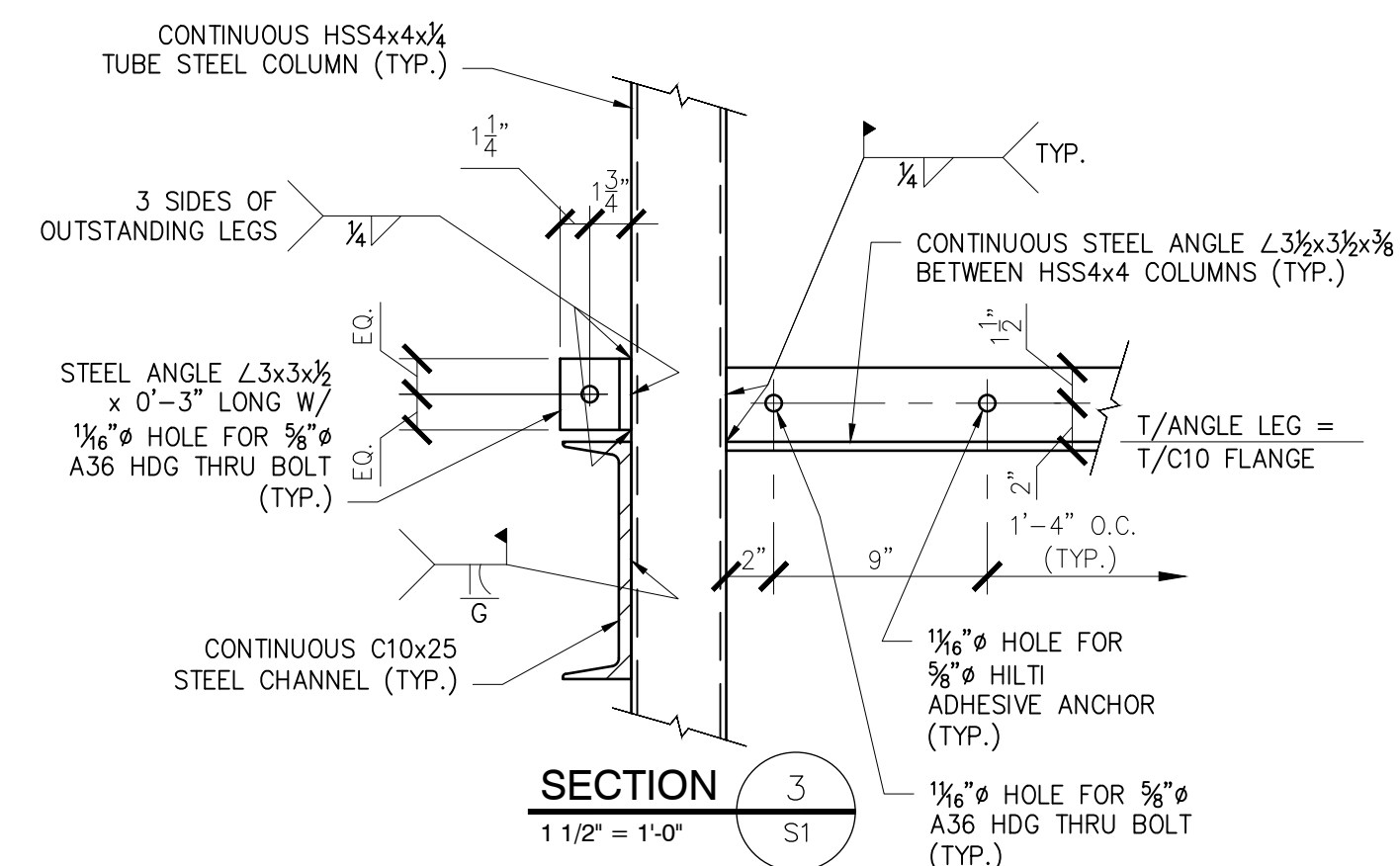


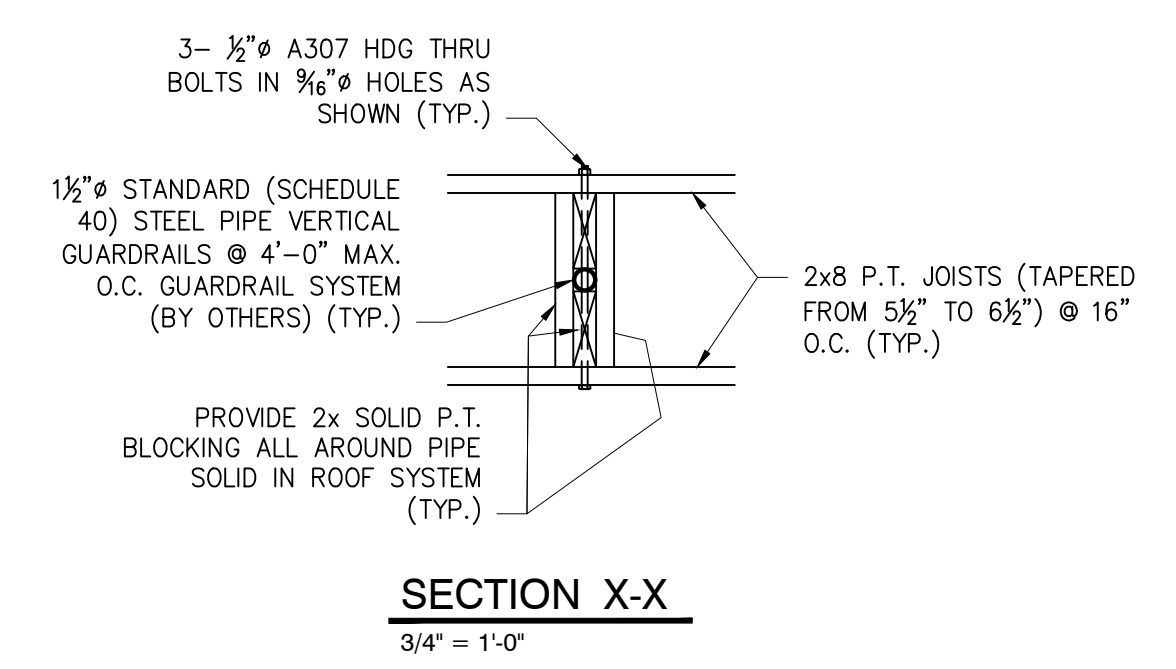
SECTION 1
1 1/2" = 1'-0"



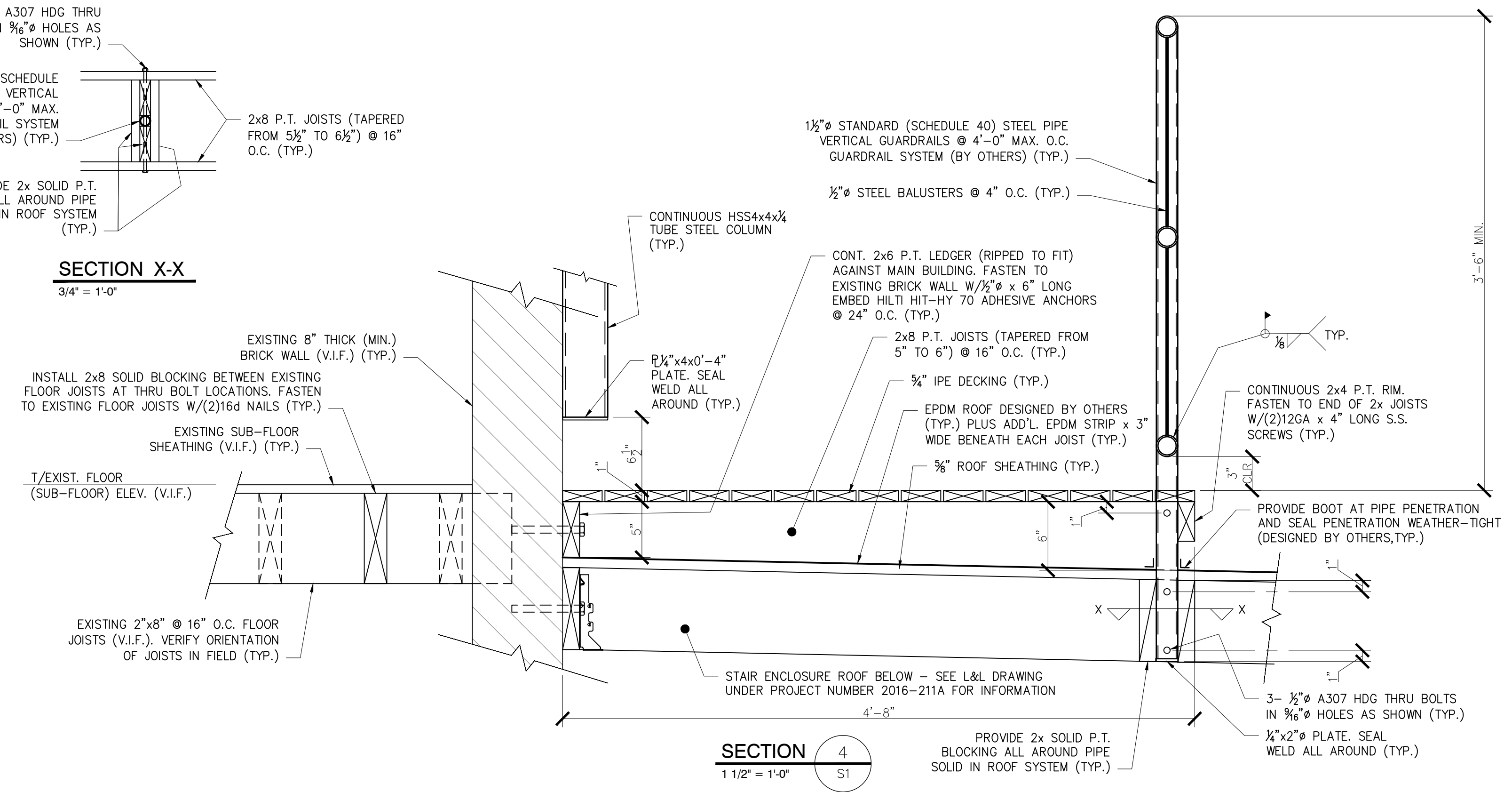
SECTION 2
1 1/2" = 1'-0"



SECTION 3
1 1/2" = 1'-0"



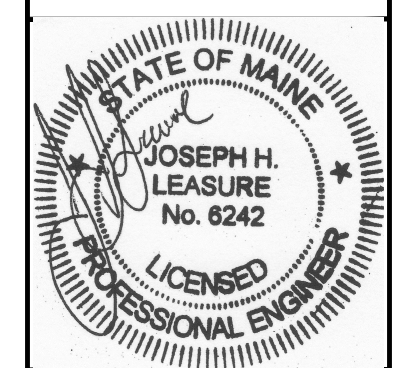
SECTION X-X
3/4" = 1'-0"



SECTION 4
1 1/2" = 1'-0"

**PRELIMINARY
NOT FOR CONSTRUCTION**

**L & L STRUCTURAL
ENGINEERING SERVICES, INC.**
SIX Q. STREET
SOUTH PORTLAND, MAINE 04106
PHONE: (207) 767-4830
FAX: (207) 799-5432
EMAIL: JLEASURE@L-L-ENG.COM



designed by:	JHL		
drawn by:	RLW		
checked by:	JHL		
scale:	AS NOTED		
date:	12/13/2016		
plot date:	05/11/2017		
project #:	2016-211B		
rev.	date	description	appr'd
A	05/11/17	FOR PERMIT AND PRICING	JHL

BUILDING LOCATED AT
602 CONGRESS STREET
PORTLAND, MAINE
EXTERIOR DECKS
SECTIONS

S2

THESE DRAWINGS HAVE BEEN DEVELOPED BY L&L STRUCTURAL ENGINEERING SERVICES, INC. FOR THE TITLED SET ONLY. THE DRAWINGS ARE THE SOLE PROPERTY OF L&L ENGINEERING SERVICES, INC. AND THEY SHALL NOT BE USED, LENT, COPIED OR ALTERED WITHOUT THE WRITTEN CONSENT OF L&L STRUCTURAL ENGINEERING SERVICES, INC.