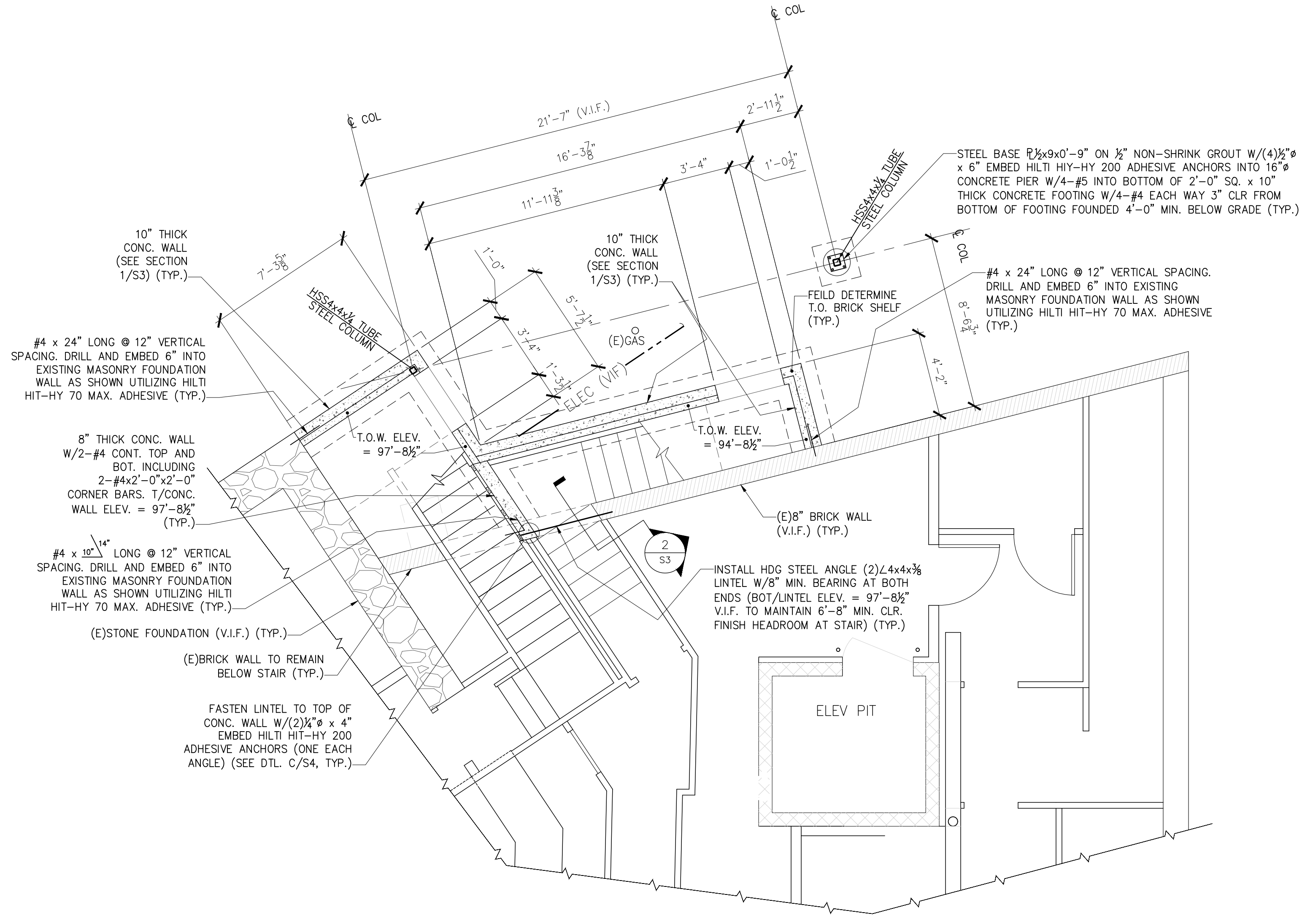


rev.	date	description
A	05/11/17	FOR PERMIT AND PRICING

designed by: JHL	checked by: JHL	scale: AS NOTED	date: 05/03/2017	plot date: 05/11/2017	project #: 2016-211A
------------------	-----------------	-----------------	------------------	-----------------------	----------------------

BUILDING LOCATED AT
602 CONGRESS STREET
PORTLAND, MAINE
EXTERIOR STAIR ENCLOSURE
BASEMENT AND FIRST FLOOR FRAMING PLANS

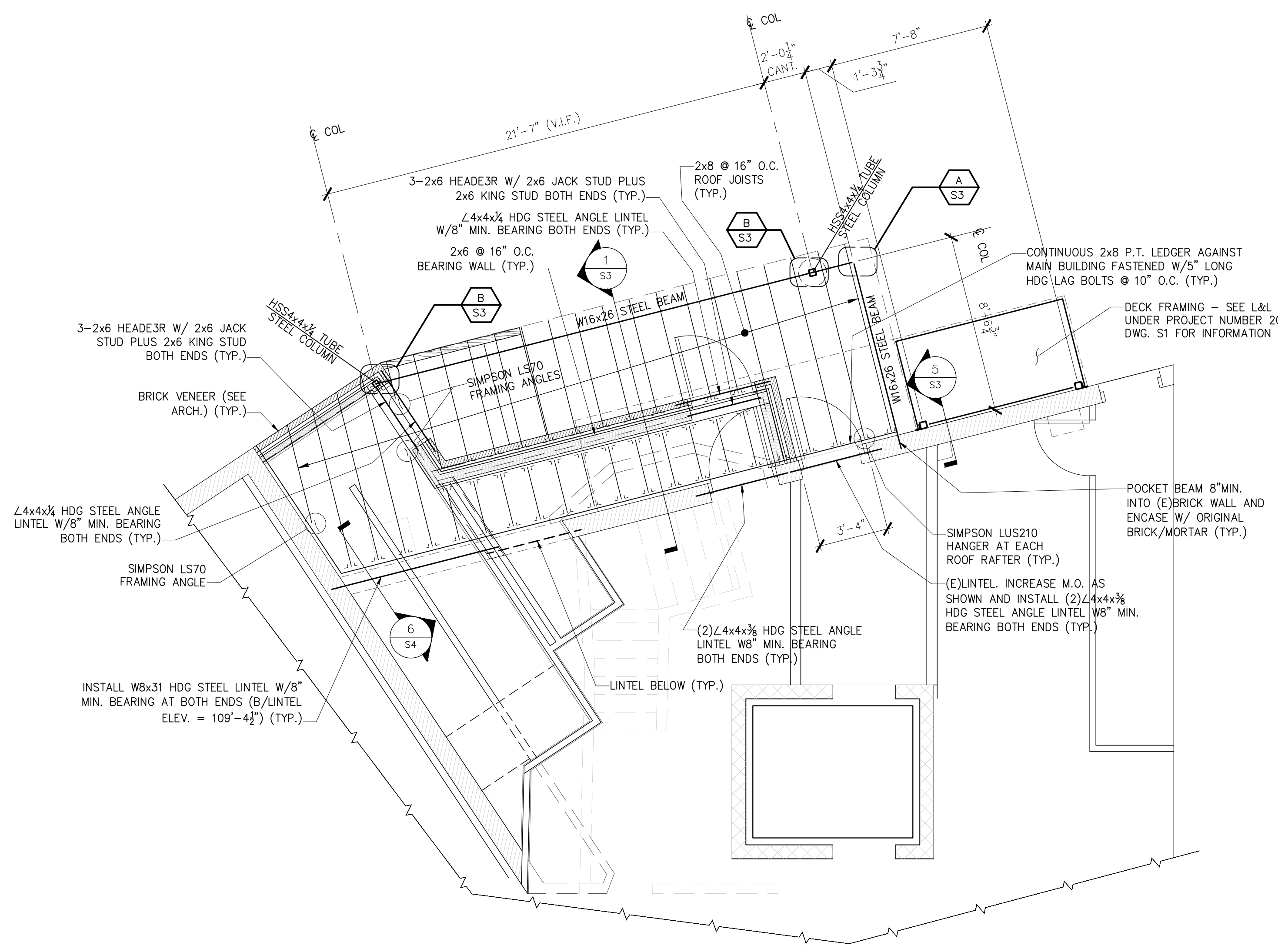
S2



FIRST FLOOR FRAMING PLAN
1/4" = 1'-0"

- NOTES:
- SEE GENERAL NOTES ON DWG S1.
 - "E" INDICATES: EXISTING CONDITIONS, OR MEMBERS.
 - "TYP." INDICATES: TYPICAL (ALSO SEE GENERAL NOTE #5).
 - "V.I.F." INDICATES: G.C. SHALL "VERIFY IN FIELD" EXISTING DIMENSIONS, ELEVATIONS, OR CONDITIONS INDICATED AND REPORT ANY DISCREPANCIES TO THE ENGINEER.
 - "U.O.N." INDICATES: UNLESS OTHERWISE NOTED.
 - "S.S." INDICATES: STAINLESS STEEL.
 - ALL STEEL LINTELS AND BEAMS SHALL BE HOT DIPPED GALVANIZED ("HDG") OR OTHERWISE COATED PER STRUCTURAL STEEL NOTES 6 & 7, DWG. S1. TOUCH UP ALL FIELD WELDS WITH SAME.

**PRELIMINARY
NOT FOR CONSTRUCTION**



ROOF FRAMING PLAN
1/4" = 1'-0"

- NOTES:
- SEE GENERAL NOTES ON DWG S1.
 - "E" INDICATES: EXISTING CONDITIONS, OR MEMBERS.
 - "TYP." INDICATES: TYPICAL (ALSO SEE GENERAL NOTE #5).
 - "V.I.F." INDICATES: G.C. SHALL "VERIFY IN FIELD" EXISTING DIMENSIONS, ELEVATIONS, OR CONDITIONS INDICATED AND REPORT ANY DISCREPANCIES TO THE ENGINEER.
 - "U.O.N." INDICATES: UNLESS OTHERWISE NOTED.
 - "S.S." INDICATES: STAINLESS STEEL.
 - ALL STEEL LINTELS AND BEAMS SHALL BE HOT DIPPED GALVANIZED ("HDG") OR OTHERWISE COATED PER STRUCTURAL STEEL NOTES 6 & 7, DWG. S1. TOUCH UP ALL FIELD WELDS WITH SAME.