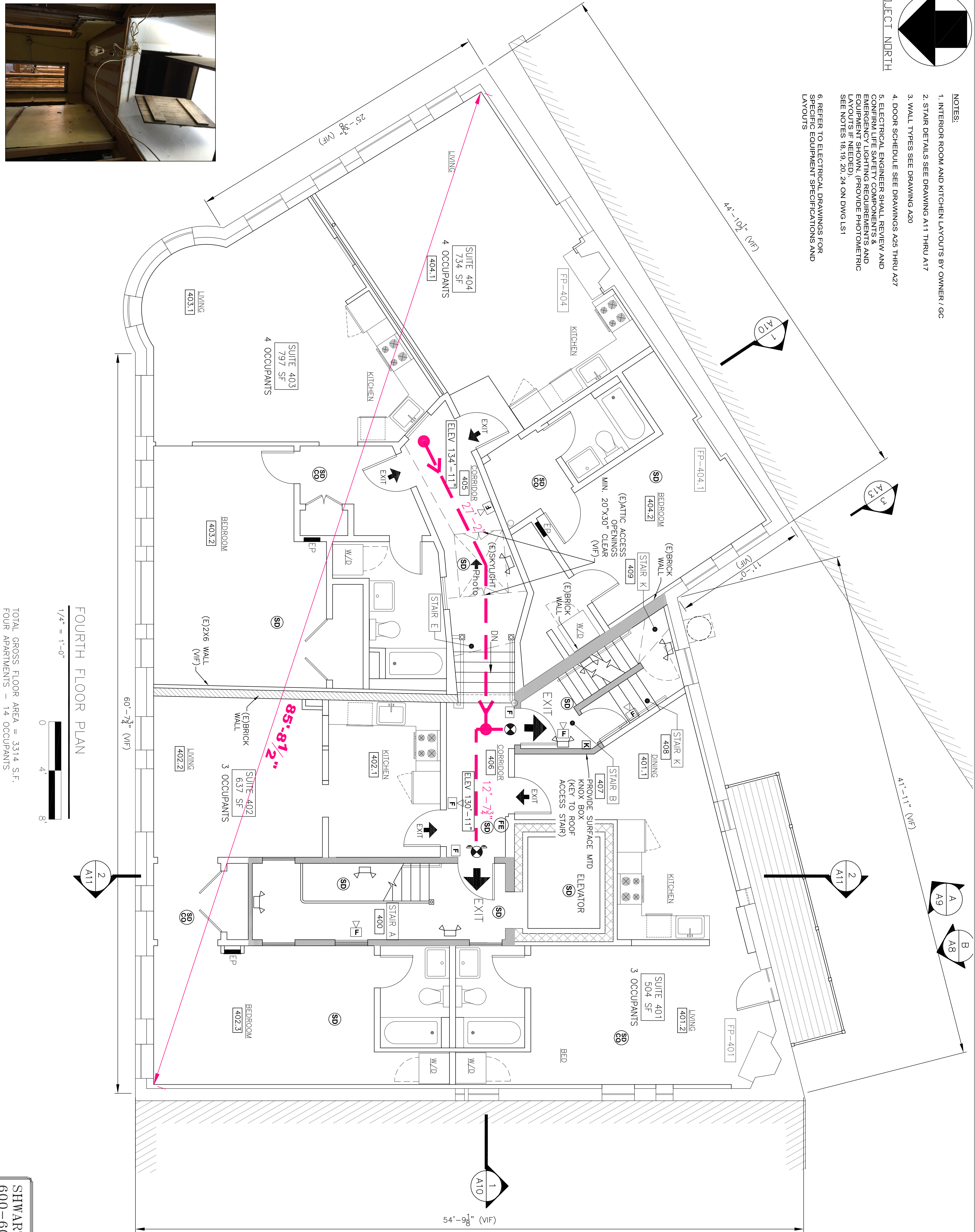


PROJECT NORTH

- NOTES:
1. INTERIOR ROOM AND KITCHEN LAYOUTS BY OWNER / GC
 2. STAIR DETAILS SEE DRAWING A11 THRU A17
 3. WALL TYPES SEE DRAWING A20
 4. DOOR SCHEDULE SEE DRAWINGS A25 THRU A27
 5. ELECTRICAL ENGINEER SHALL REVIEW AND CONFIRM ALL ELECTRICAL SCHEDULES AND EMERGENCY LIGHTING REQUIREMENTS AND EQUIPMENT SHOWN, (PROVIDE PHOTO-METRIC SEE NOTES 18, 19, 20, 24 ON DWG LST1)
 6. REFER TO ELECTRICAL DRAWINGS FOR SPECIFIC EQUIPMENT SPECIFICATIONS AND LAYOUTS

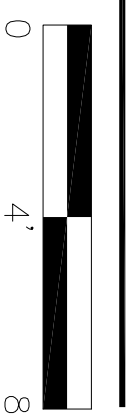


(E)ATTIC ACCESS
Two Existing Openings
Note 36 /A1



FOURTH FLOOR PLAN

1/4" = 1'-0"

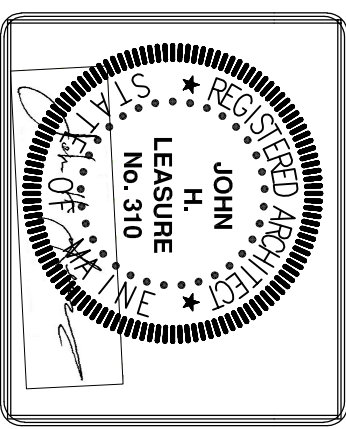


TOTAL GROSS FLOOR AREA = 3314 S.F.
FOUR APARTMENTS - 14 OCCUPANTS

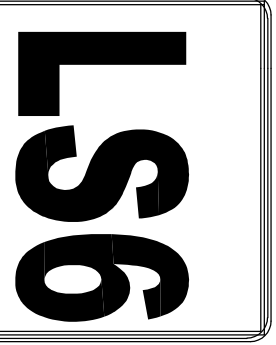
LEGEND

- (FT) EGRESS TRAVEL PATHS
- (FE) FIRE EXTINGUISHER
- SELF CONTAINED EMERGENCY LIGHT WITH 2 HEADS (LED) UZSN-KQ3L OR APPD EQUAL 25 WATTS FOR 90 MINUTES COLOR BY OWNER
- INTERIOR REMOTE HEAD EMERGENCY LIGHT UNIT DUAL-LITE (LED) MODEL OGRD 1203L COLOR BY OWNER
- EXTERIOR REMOTE HEAD EMERGENCY LIGHT UNIT DUAL-LITE (LED) MODEL OGRD 1203L COLOR BY OWNER
- EXIT / EMERGENCY LIGHT COMPARTION DUAL-LITE ENCLR-44H OR APPD EQUAL COLOR BY OWNER
- EXIT LIGHT ILLUMINATED (UNSWITCHED) DUAL-LITE IXLRW-4E OR APPD EQUAL COLOR BY OWNER
- EXIT LIGHT ILLUMINATED (UNSWITCHED) [CHEVRON DIRECTIONAL ARROW]
- 30 FIRE ALARM AUDIOVISUAL MOUNT 6-8" AFF NUMBER - CANDELA RATING, MH - MINIHORN CL - CEILING MOUNTED NO DESIGNATION INDICATES 15sd
- (F) FIRE ALARM PULL STATION MOUNT AT 48" AFF
- 15 FIRE ALARM VISUAL STROBE, MOUNT 6-8" AFF, NUMBER INDICATES CANDELA RATING CL DENOTES CEILING MOUNTED PHOTOELECTRIC TYPE
- (SD) SYSTEM CONNECTED SMOKE / CARBON MONOXIDE DETECTOR PHOTOELECTRIC TYPE
- (HD) SYSTEM CONNECTED FIXED TEMPERATURE HEAT DETECTOR SYSTEM CONNECTED FIXED TEMPERATURE HEAT DETECTOR SYSTEM CONNECTED SMOKE DETECTOR, PHOTOELECTRIC TYPE
- (CO) SYSTEM CONNECTED CARBON MONOXIDE DETECTOR
- (FACP) FIRE ALARM CONTROL PANEL, WITH DEDICATED TELEPHONE JACK
- (ANU) FIRE ALARM ANNUNCIATOR PANEL

REV.	DATE	STATUS
.	3-30-17	STATE FIRE MARSHAL SUBMISSION
1	4-28-17	SUBMITTED FOR PERMITS



JOHN H. LEASURE ARCHITECT, INC.
6 Q STREET
SOUTH PORTLAND, MAINE 04106



SHWARTZ BUILDING RENOVATIONS
600-604 CONGRESS STREET
PORTLAND, MAINE
FOURTH FLOOR - LIFE SAFETY PLAN