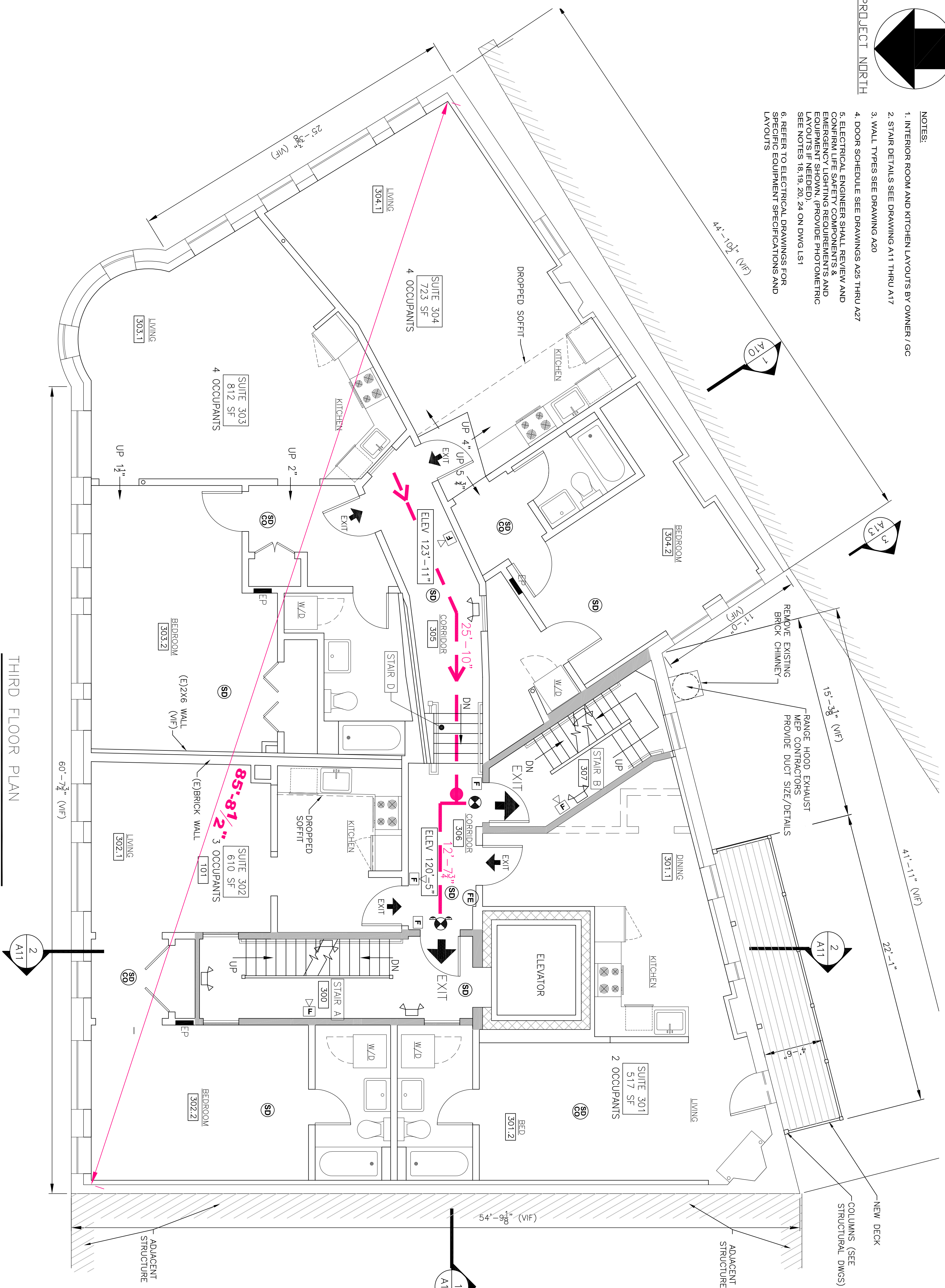


- NOTES:
1. INTERIOR ROOM AND KITCHEN LAYOUTS BY OWNER / GC
 2. STAIR DETAILS SEE DRAWING A11 THRU A17
 3. WALL TYPES SEE DRAWING A20
 4. DOOR SCHEDULES SEE DRAWINGS A25 THRU A27
 5. ELECTRICAL ENGINEER SHALL REVIEW AND CONFIRM LIFE SAFETY COMPONENTS AND EMERGENCY LIGHTING REQUIREMENTS AND EXIT LIGHT NEEDS (PROVIDE PHOTOMETRIC DATA IF NEEDED)
 6. REFER TO ELECTRICAL DRAWINGS FOR SPECIFIC EQUIPMENT SPECIFICATIONS AND LAYOUTS

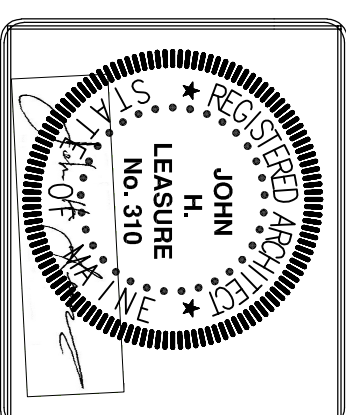


THIRD FLOOR PLAN
 1/4" = 1'-0"
 0 4' 8'
 TOTAL GROSS FLOOR AREA = 3314 S.F.
 FOUR APARTMENTS - 13 OCCUPANTS

LEGEND

- (FT) EGRESS TRAVEL PATHS
- FE FIRE EXTINGUISHER
- SELF CONTAINED EMERGENCY LIGHT DUAL-LITE (LED) L25M-42L OR APPD EQUAL 25 WATTS FOR 90 MINUTES COLOR BY OWNER
- INTERIOR REMOTE HEAD EMERGENCY LIGHT UNIT DUAL-LITE (LED) MODEL CP9D 1203L COLOR BY OWNER
- EXTERIOR REMOTE HEAD EMERGENCY LIGHT UNIT DUAL-LITE (LED) MODEL OC9D 1203L COLOR BY OWNER
- EXIT / EMERGENCY LIGHT CORINATION DUAL-LITE LXL-R-W-E OR APPD EQUAL COLOR BY OWNER
- EXIT LIGHT ILLUMINATED (UNSWITCHED) [CHEVRON DIRECTIONAL ARROW]
- EXIT LIGHT ILLUMINATED (UNSWITCHED) [CHEVRON DIRECTIONAL ARROW]
- FIRE ALARM AUDIOVISUAL MOUNT 6-5" AFF NUMBER - CANDELA RATING, MH - MINIMUM CL - CEILING MOUNTED NO DESIGNATION INDICATES 15cd
- FIRE ALARM PULL STATION MOUNT AT 48" AFF
- FIRE ALARM VISUAL STROBE MOUNT 6-5" AFF, NUMBER INDICATES CANDELA RATING CL DENOTES CEILING MOUNTED PHOTOELECTRIC TYPE
- SD SYSTEM CONNECTED SMOKE / CARBON MONOXIDE DETECTOR
- HD SYSTEM CONNECTED FIXED TEMPERATURE HEAT DETECTOR
- SD SYSTEM CONNECTED FIXED TEMPERATURE HEAT DETECTOR
- CO SYSTEM CONNECTED SMOKE DETECTOR, PHOTOELECTRIC TYPE
- CO SYSTEM CONNECTED CARBON MONOXIDE DETECTOR
- FACP FIRE ALARM CONTROL PANEL WITH DEDICATED TELEPHONE JACK
- ANU FIRE ALARM ANNUNCIATOR PANEL

| REV. | DATE | STATUS |
|------|---------|-------------------------------|
| . | 3-30-17 | STATE FIRE MARSHAL SUBMISSION |
| 1 | 4-28-17 | SUBMITTED FOR PERMITS |



SHWARTZ BUILDING RENOVATIONS
 600-604 CONGRESS STREET
 PORTLAND, MAINE
 THIRD FLOOR - LIFE SAFETY PLAN

JOHN H. LEASURE ARCHITECT, INC.
 6 Q STREET
 SOUTH PORTLAND, MAINE 04106

