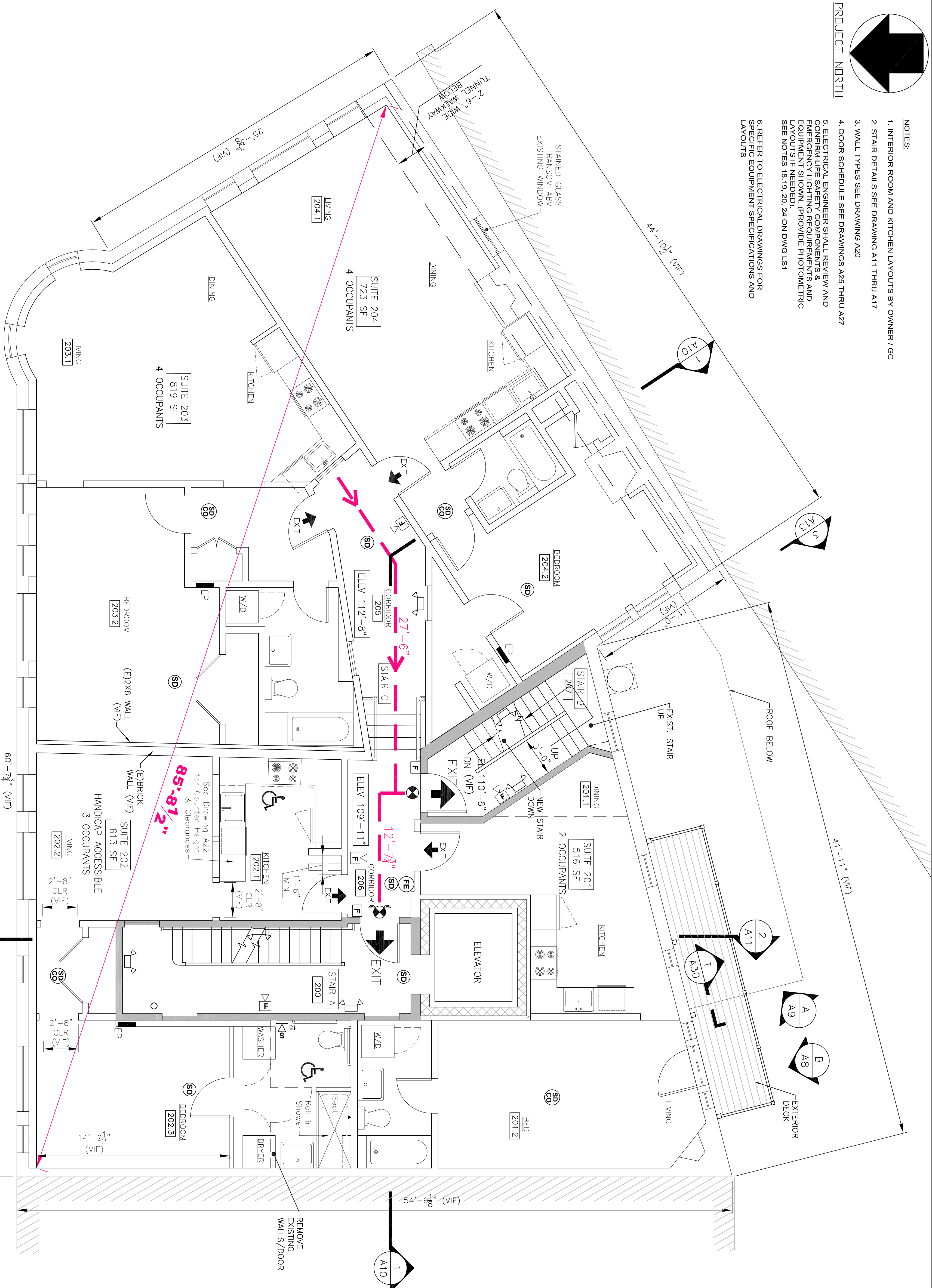


- NOTES:
1. INTERIOR ROOM AND KITCHEN LAYOUTS BY OWNER / GC
 2. STAIR DETAILS SEE DRAWING A11 THRU A17
 3. WALL TYPES SEE DRAWING A20
 4. DOOR SCHEDULE SEE DRAWINGS A25 THRU A27
 5. ELECTRICAL ENGINEER SHALL REVIEW AND CONFIRM LIFE SAFETY COMPONENTS & EMERGENCY LIGHTING REQUIREMENTS AND EQUIPMENT SHOWN. (PROVIDE PHOTO-METRIC LAYOUTS IF NEEDED). SEE NOTES 18, 19, 20, 24 ON DWG L51
 6. REFER TO ELECTRICAL DRAWINGS FOR SPECIFIC EQUIPMENT SPECIFICATIONS AND LAYOUTS

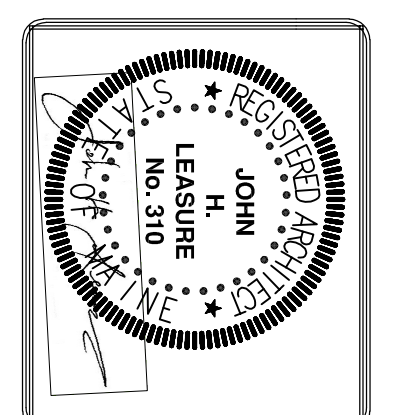


SECOND FLOOR PLAN
 1/4" = 1'-0"
 0 4 8'
 TOTAL GROSS FLOOR AREA = 3314 S.F.
 FOUR APARTMENTS - 13 OCCUPANTS

LEGEND

- (FT) EGRESS TRAVEL PATHS
- FE FIRE EXTINGUISHER
- SELF CONTAINED EMERGENCY LIGHT WITH 2 HEADS DUAL-LITE (LED) L225N-42L OR APPD EQUAL 25 WATTS FOR 90 MINUTES
- INTERIOR REMOTE HEAD EMERGENCY LIGHT UNIT DUAL-LITE (LED) MODEL CP9D 1203L COLOR BY OWNER
- EXTERIOR REMOTE HEAD EMERGENCY LIGHT UNIT DUAL-LITE (LED) MODEL CO9D 1203L COLOR BY OWNER
- EXIT / EMERGENCY LIGHT COMBINATION DUAL-LITE EVOLAR-D4H OR APPD EQUAL COLOR BY OWNER
- EXIT LIGHT ILLUMINATED (UNSWITCHED) DUAL-LITE LX-JAR-W-E OR APPD EQUAL COLOR BY OWNER
- EXIT LIGHT ILLUMINATED (UNSWITCHED) [CHEVRON DIRECTIONAL ARROW]
- FIRE ALARM AUDIOVISUAL MOUNT 6"-8" AFF NUMBER - CANDELA RATING, MH - MIN/HORM CL - CEILING MOUNTED NO DESIGNATION INDICATES 15dd
- FIRE ALARM PULL STATION MOUNT AT 48" AFF
- 15 FIRE ALARM VISUAL STROBE MOUNT 6"-8" AFF, NUMBER INDICATES CANDELA RATING CL DENOTES CEILING MOUNTED PHOTOELECTRIC TYPE
- HD SYSTEM CONNECTED FIXED TEMPERATURE HEAT DETECTOR
- SD SYSTEM CONNECTED FIXED TEMPERATURE HEAT DETECTOR
- CO SYSTEM CONNECTED SMOKE / CARBON MONOXIDE DETECTOR
- CO SYSTEM CONNECTED CARBON MONOXIDE DETECTOR
- FA/CP FIRE ALARM CONTROL PANEL WITH DEDICATED TELEPHONE JACK
- ANU FIRE ALARM ANNUNCIATOR PANEL
- REMOVE EXISTING WALLS / DOOR

REV.	DATE	STATUS
.	3-30-17	STATE FIRE MARSHAL SUBMISSION
1	4-28-17	SUBMITTED FOR PERMITS



JOHN H. LEASURE ARCHITECT, INC.
 6 Q STREET
 SOUTH PORTLAND, MAINE 04106

SHWARTZ BUILDING RENOVATIONS
 600-604 CONGRESS STREET
 PORTLAND, MAINE
 SECOND FLOOR - LIFE SAFETY PLAN

