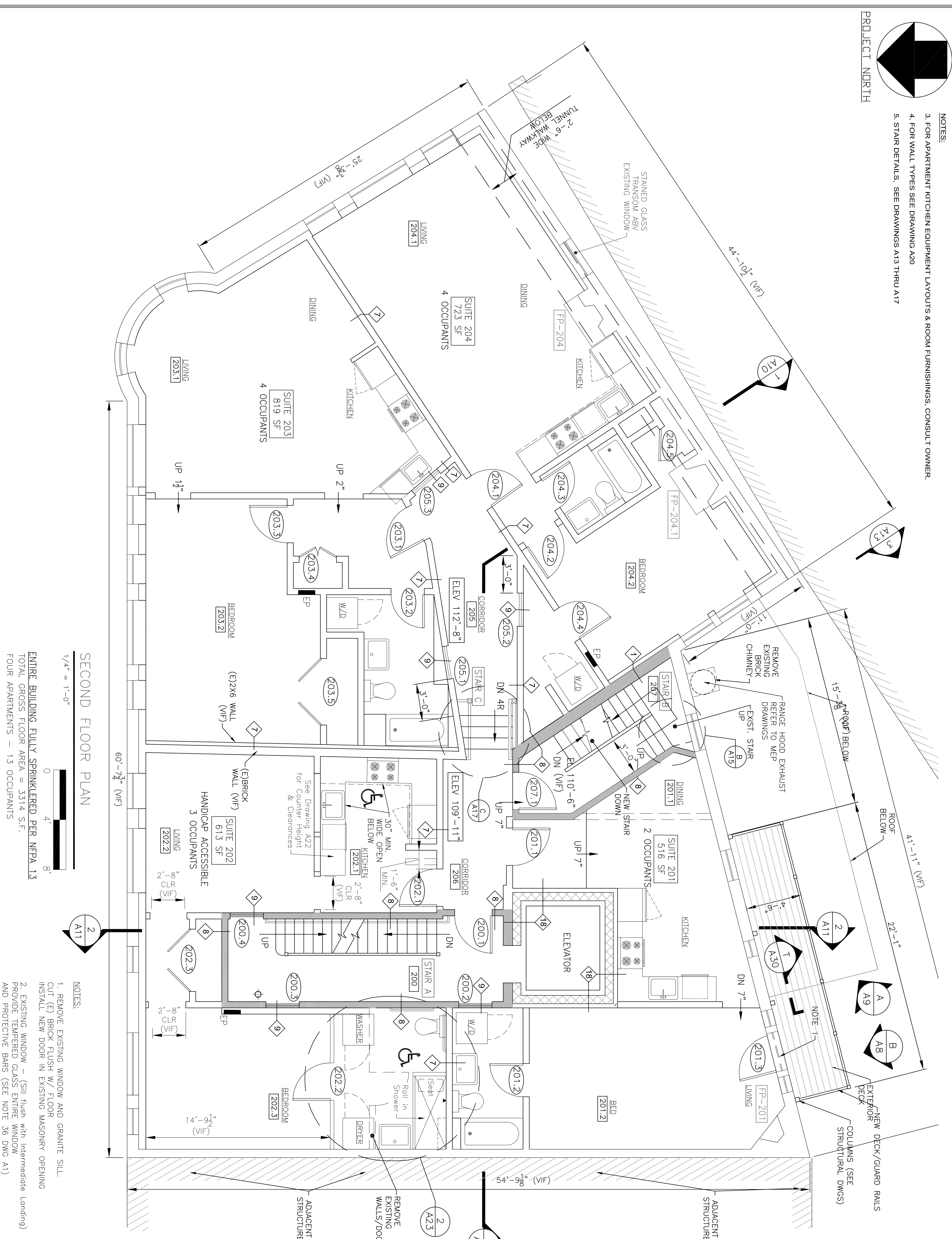


- NOTES:
- FOR APARTMENT KITCHEN EQUIPMENT LAYOUTS & ROOM FURNISHINGS, CONSULT OWNER.
 - FOR WALL TYPES SEE DRAWING A20
 - STAIR DETAILS. SEE DRAWINGS A13 THRU A17



SECOND FLOOR PLAN
 1/4" = 1'-0"
 0 4 8
 ENTIRE BUILDING FULLY SPRINKLERED PER NFPA 13
 TOTAL GROSS FLOOR AREA = 3314 S.F.
 FOUR APARTMENTS - 13 OCCUPANTS

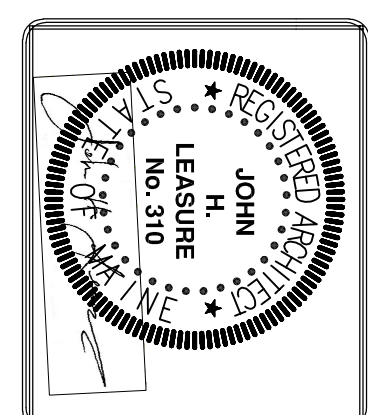
- NOTES:
- REMOVE EXISTING WINDOW AND GRANITE SILL. CUT (E) BRICK FLUSH W/ FLOOR. INSTALL NEW DOOR IN EXISTING MASONRY OPENING.
 - EXISTING WINDOW - (Sill flush with intermediate landing) PROVIDE TEMPERED GLASS ENTIRE WINDOW AND PROTECTIVE BARS (SEE NOTE 36 DWG A1)

STAIR A - EXISTING (2nd - 3rd) 1 HOUR FIRE RATED ENCLOSURE
 (E)32" TREAD WIDTH
 (E)7 1/2" RISERS
 (E)11 1/2" TREADS
 (E)1 1/2" TREAD NOSINGS
 (E)NEWEL POST
 (E)28" T/GUARD RAIL
 (E)31" T/HANDRAIL ONE SIDE (WALL)
 NEW: REMOVE EXISTING 28" HIGH GUARD RAIL/BAUSTERS. INSTALL RAIL TO 30" MIN. T/RAIL HEIGHT. (NOTE 136/LST1)
 REMOVE (E)NEWEL POSTS AND REPLACE WITH NEW TO MATCH. MATCH EXISTING GUARD/HANDRAIL, BAUSTERS & NEWEL POSTS (DWG A14). REFER TO GUARD, HANDRAIL & BAUSTERS NOTES ON LST1 & A1. TYPICAL.
 DRAWING A15 FOR MORE DETAILS

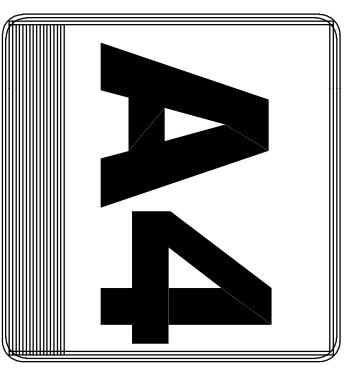
STAIR C - EXISTING (2nd Floor Corridor)
 (E)33" to 48" TREAD WIDTH VARIES
 (E)4 RISERS @ 8" = 2'-8" (VIF)
 (E)3 TREADS @ 10 1/2" = 2'-8 1/2" (VIF)
 (E)1 1/2" TREAD NOSINGS
 (E)NEWEL POST
 (E)31" T/HANDRAIL ONE SIDE
 NEW: REMOVE (E)NEWEL POST & RAILS. INSTALL NEW RAIL & NEWELS TO MATCH (DWG A14).
 DRAWING A17 FOR MORE DETAILS

STAIR B - EXISTING (2nd - 3rd) 1 HOUR FIRE RATED ENCLOSURE
 (E)33" TREAD WIDTH (Existing-VIF)
 (E)7 1/2" RISERS
 (E)9 1/2" TREADS
 (E) 3/4" TREAD NOSINGS
 (E)17/HANDRAIL ONE SIDE
 NEW: REMOVE EXISTING HANDRAIL. REPLACE W/ NEW HANDRAIL. T/HANDRAIL 34" (SEE NOTES 13/LST1, 20&21/A1) ONE SIDE.
 DRAWING A15 FOR MORE DETAILS

REV.	DATE	STATUS
.	3-30-17	STATE FIRE MARSHAL SUBMISSION
1	4-28-17	SUBMITTED FOR PERMITS



SHWARTZ BUILDING RENOVATIONS
 600-604 CONGRESS STREET
 PORTLAND, MAINE
 SECOND FLOOR PLAN



JOHN H. LEASURE ARCHITECT, INC.
 6 Q STREET
 SOUTH PORTLAND, MAINE 04106