

# ROOM FINISH SCHEDULE

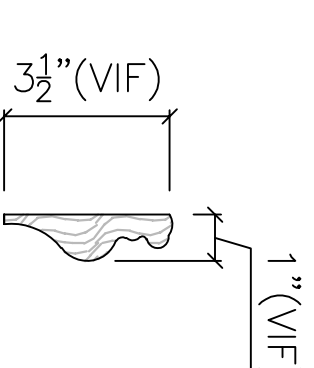
ROOM #	ROOM NAME	FLOOR	WALL BASE	WALLS				CEILING	REMARKS
				NORTH	EAST	SOUTH	WEST		
B01	TENANT STORAGE	(E)CONC PTD	RB	PLY PTD	PLY PTD	PLY PTD	PLY PTD	GB PTD	FIRE RATED CEILING DETAIL B / 421
B02	ELECTRIC ROOM	(E)CONC PTD	RB	GB PTD	GB PTD	(E)BRICK	GB PTD	GB PTD	FIRE RATED CEILING DETAIL B / 421
B03	REFRIGERATION/STORAGE	(E)CONC PTD	RB	(E)BRICK	PLY PTD	PLY PTD	PLY PTD	GB PTD	FIRE RATED CEILING DETAIL B / 421
B04	STORAGE ROOM	(E)CONC PTD	RB	GB PTD	GB PTD	(E)BRICK	GB PTD	GB PTD	FIRE RATED CEILING DETAIL B / 421
B05	STORAGE ROOM	(E)CONC PTD	RB	GB PTD	GB PTD	(E)BRICK	GB PTD	GB PTD	FIRE RATED CEILING DETAIL B / 421
B06	ELEVATOR MACHINE ROOM	(E)CONC PTD	RB	GB PTD	GB PTD	GB PTD	GB PTD	GB PTD	FIRE RATED CEILING DETAIL J / 421
B07	MECHANICAL ROOM	(E)CONC PTD	RB	GB PTD	GB PTD	(E)BRICK	GB PTD	GB PTD	FIRE RATED CEILING DETAIL B / 421
B08	604 BASEMENT STORAGE	(E)CONC PTD	RB	(E)CONC	GB PTD	(E)BRICK	GB PTD	GB PTD	FIRE RATED CEILING DETAIL B / 421
B09	SPRINKLER ROOM	(E)CONC PTD	RB	GB PTD	GB PTD	GB PTD	GB PTD	GB PTD	FIRE RATED CEILING DETAIL B / 421
100	SOUTH ELEVATOR LOBBY	HW	WB	W/L/P PTD	W/L/P PTD	W/L/P PTD	W/L/P PTD	W/L/P PTD	NOTE 3
101	RESTAURANT	NOTE 1	CT	GB PTD	FRP	FRP	FRP	PTD GB (NOTE 3)	TENANT SELECTED FINISHES, OWNER APPROVAL REQD. NOTE 2
102	RESTAURANT	CT	CT	GB PTD	FRP	FRP	FRP	MR GB PTD	TENANT SELECTED FINISHES, OWNER APPROVAL REQD. NOTE 2
103	WOMEN'S RESTROOM	CT	CT	MR GB PTD	MR GB PTD	MR GB PTD	MR GB PTD	MR GB PTD	TENANT SELECTED FINISHES, OWNER APPROVAL REQD. NOTE 2
104	RETAIL TENANT SPACE	HW	WB	W/L/P PTD	W/L/P PTD	W/L/P PTD	W/L/P PTD	W/L/P PTD	PATCH & SEAL ALL OPENINGS, GAPS, AND PENETRATIONS WITH A 2 HOUR RATED FIRE SPANG. USE SIMILAR MATERIALS IN PATCHING.
105	SOUTH ELEVATOR LOBBY	HW	WB	W/L/P PTD	MR GB PTD	MR GB PTD	MR GB PTD	W/L/P PTD	NOTE 3
106	MEN'S RESTROOM	CT	CT	MR GB PTD	MR GB PTD	MR GB PTD	MR GB PTD	MR GB PTD	TENANT SELECTED FINISHES, OWNER APPROVAL REQD. NOTE 2
107	STAR B	CT	CT	EXPOSED BRICK	MR GB PTD	MR GB PTD	MR GB PTD	MR GB PTD	TENANT SELECTED FINISHES, OWNER APPROVAL REQD. NOTE 2
108	STAR F	CT	CT	GB PTD	GB PTD	GB PTD	GB PTD	GB PTD	OPTIONAL SUSPENDED ACOUSTICAL PANEL CEILING
109	STAR J	VCT	VCT	GB PTD	GB PTD	GB PTD	GB PTD	GB PTD	NOTE 3
200	STAR A	VCT	MATCH (E)BASEBOARD	(E)W/L/P	(E)W/L/P	(E)W/L/P	(E)W/L/P	R/L/P	INSTALL ROCK LATH & PLASTER OVER (E)1X4 WD FLOORING (SEE CEILING TYPE G / 421)
201.1	SUITE 201 DINING	(E)HARDWOOD	MATCH (E)BASEBOARD	GB PTD	GB PTD	GB PTD	GB PTD	W/L/P	EXISTING WOOD TRIM AT DOORS, BASEBOARD AND WAINSCOT (GC MATCH EXISTING)
201.2	SUITE 201 LIVING	HARDWOOD	MATCH (E)BASEBOARD	GB PTD	GB PTD	GB PTD	GB PTD	W/L/P	
202.1	SUITE 202 KITCHEN	(E)HARDWOOD	MATCH (E)BASEBOARD	(E)W/L/P	(E)W/L/P	(E)W/L/P	(E)W/L/P	EXISTING W/L/P	
202.2	SUITE 202 LIVING	HARDWOOD	MATCH (E)BASEBOARD	GB PTD	GB PTD	GB PTD	GB PTD	W/L/P	
202.3	SUITE 202 BEDROOM	HARDWOOD	MATCH (E)BASEBOARD	GB PTD	GB PTD	GB PTD	GB PTD	W/L/P	
203.1	SUITE 203 LIVING	HARDWOOD	MATCH (E)BASEBOARD	GB PTD	GB PTD	GB PTD	GB PTD	W/L/P	
203.2	SUITE 203 BEDROOM	HARDWOOD	MATCH (E)BASEBOARD	GB PTD	GB PTD	GB PTD	GB PTD	W/L/P	
204.1	SUITE 204 LIVING	HARDWOOD	MATCH (E)BASEBOARD	GB PTD	GB PTD	GB PTD	GB PTD	W/L/P	
204.2	SUITE 204 BEDROOM	HARDWOOD	MATCH (E)BASEBOARD	GB PTD	GB PTD	GB PTD	GB PTD	W/L/P	
205	CORRIDOR (STAR C)	CT	MATCH (E)BASEBOARD	(E)W/L/P	(E)W/L/P	(E)W/L/P	(E)W/L/P	EXISTING W/L/P	MATCH EXISTING BASEBOARD AND WAINSCOT
206	CORRIDOR	CT	MATCH (E)BASEBOARD	(E)W/L/P	(E)W/L/P	(E)W/L/P	(E)W/L/P	EXISTING W/L/P	MATCH EXISTING BASEBOARD AND WAINSCOT
207	STAR B	VCT	MATCH (E)BASEBOARD	(E)W/L/P	(E)W/L/P	(E)W/L/P	(E)W/L/P	R/L/P	INSTALL ROCK LATH & PLASTER OVER (E)1X4 WD FLOORING (SEE CEILING TYPE G / 421)
300	STAR A	VCT	MATCH (E)BASEBOARD	(E)W/L/P	(E)W/L/P	(E)W/L/P	(E)W/L/P	R/L/P	
301.1	SUITE 301 DINING	HARDWOOD	MATCH (E)BASEBOARD	GB PTD	GB PTD	GB PTD	GB PTD	W/L/P	
301.2	SUITE 301 LIVING	(E)HARDWOOD	MATCH (E)BASEBOARD	GB PTD	GB PTD	GB PTD	GB PTD	W/L/P	
302.1	SUITE 302 LIVING	(E)HARDWOOD	MATCH (E)BASEBOARD	GB PTD	GB PTD	GB PTD	GB PTD	W/L/P	SOME EXISTING BASEBOARD AND WOOD LATH/PLASTER CEILING
302.2	SUITE 302 BEDROOM	(E)HARDWOOD	MATCH (E)BASEBOARD	GB PTD	GB PTD	GB PTD	GB PTD	W/L/P	
303.1	SUITE 303 LIVING	(E)HARDWOOD	MATCH (E)BASEBOARD	GB PTD	GB PTD	GB PTD	GB PTD	W/L/P	
303.2	SUITE 303 BEDROOM	(E)HARDWOOD	MATCH (E)BASEBOARD	GB PTD	GB PTD	GB PTD	GB PTD	W/L/P	
304.1	SUITE 304 LIVING	(E)HARDWOOD	MATCH (E)BASEBOARD	GB PTD	GB PTD	GB PTD	GB PTD	W/L/P	REMOVE (E)COVERING OVER HARDWOOD FLOOR, CLEAN, SAND AND RENISH
304.2	SUITE 304 BEDROOM	(E)HARDWOOD	MATCH (E)BASEBOARD	GB PTD	GB PTD	GB PTD	GB PTD	W/L/P	
305	CORRIDOR (STAR D)	CT	MATCH (E)BASEBOARD	(E)W/L/P	(E)W/L/P	(E)W/L/P	(E)W/L/P	EXISTING W/L/P	MATCH EXISTING BASEBOARD AND WAINSCOT
306	CORRIDOR	CT	MATCH (E)BASEBOARD	(E)W/L/P	(E)W/L/P	(E)W/L/P	(E)W/L/P	EXISTING W/L/P	MATCH EXISTING BASEBOARD AND WAINSCOT
307	STAR A	VCT	MATCH (E)BASEBOARD	(E)W/L/P	(E)W/L/P	(E)W/L/P	(E)W/L/P	W/L/P	INSTALL 2X4 FRAMING, ROCK LATH & PLASTER (SEE CEILING TYPE G / 421)
400	STAR A	VCT	MATCH (E)BASEBOARD	(E)W/L/P	(E)W/L/P	(E)W/L/P	(E)W/L/P	R/L/P	INSTALL 2X4 FRAMING, ROCK LATH & PLASTER (SEE CEILING TYPE G / 421)
401.1	SUITE 401 DINING	VCT	MATCH (E)BASEBOARD	GB PTD	GB PTD	GB PTD	GB PTD	EXISTING W/L/P	SOME EXISTING BASEBOARD AND WOOD LATH/PLASTER CEILING
401.2	SUITE 401 LIVING	HARDWOOD	MATCH (E)BASEBOARD	GB PTD	GB PTD	GB PTD	GB PTD	EXISTING W/L/P	
402.1	SUITE 402 KITCHEN	(E)HARDWOOD	MATCH (E)BASEBOARD	(E)W/L/P	(E)W/L/P	(E)W/L/P	(E)W/L/P	EXISTING W/L/P	SOME EXISTING BASEBOARD AND WOOD LATH/PLASTER CEILING
402.2	SUITE 402 LIVING	(E)HARDWOOD	MATCH (E)BASEBOARD	(E)W/L/P	(E)W/L/P	(E)W/L/P	(E)W/L/P	EXISTING W/L/P	EXISTING WOOD TRIM AT DOORS, BASEBOARD AND WAINSCOT (GC MATCH EXISTING)
402.3	SUITE 402 BEDROOM	(E)HARDWOOD	MATCH (E)BASEBOARD	(E)W/L/P	(E)W/L/P	(E)W/L/P	(E)W/L/P	EXISTING W/L/P	EXISTING WOOD TRIM AT DOORS, BASEBOARD AND WAINSCOT (GC MATCH EXISTING)
403.1	SUITE 403 LIVING	(E)HARDWOOD	MATCH (E)BASEBOARD	GB PTD	GB PTD	GB PTD	GB PTD	EXISTING W/L/P	EXISTING WOOD TRIM AT DOORS, BASEBOARD AND WAINSCOT (GC MATCH EXISTING)
403.2	SUITE 403 BEDROOM	(E)HARDWOOD	MATCH (E)BASEBOARD	GB PTD	GB PTD	GB PTD	GB PTD	EXISTING W/L/P	
404.1	SUITE 404 LIVING	(E)HARDWOOD	MATCH (E)BASEBOARD	(E)W/L/P	GB PTD	(E)W/L/P	(E)W/L/P	GB PTD	REMOVE EXISTING SUSPENDED WOOD CEILING JOISTS
404.2	SUITE 404 BEDROOM	(E)HARDWOOD	MATCH (E)BASEBOARD	(E)W/L/P	GB PTD	(E)W/L/P	(E)W/L/P	EXISTING W/L/P	
405	CORRIDOR (STAR E)	CT	MATCH (E)BASEBOARD	(E)W/L/P	(E)W/L/P	(E)W/L/P	(E)W/L/P	EXISTING W/L/P	MATCH EXISTING BASEBOARD AND WAINSCOT
406	CORRIDOR	CT	MATCH (E)BASEBOARD	(E)W/L/P	(E)W/L/P	(E)W/L/P	(E)W/L/P	EXISTING W/L/P	MATCH EXISTING BASEBOARD AND WAINSCOT
407	STAR B	VCT	MATCH (E)BASEBOARD	(E)W/L/P	(E)W/L/P	(E)W/L/P	(E)W/L/P	R/L/P	INSTALL 2X4 FRAMING, ROCK LATH & PLASTER (SEE CEILING TYPE G / 421)

## ROOM FINISH ABBREVIATIONS

CP	CEILING PANEL	GB	GYPSUM BOARD	VCT	VINYL COMPOSITION TILE
CM	CROWN MOLDING	HM	HARDWOOD	VT	VINYL TILE
CT	CERAMIC TILE	MR	MOISTURE RESISTANT	WB	WOOD BASEBOARD
EB	EXPOSED BRICK	PTD	PAINTED	W/L/P	WOOD LATH & PLASTER
(E)	EXISTING	RB	RUBBER BASE	WS	WOOD WAINSCOT
FR	FIBERGLASS REINF. PLASTIC	R/L/P	ROCK LATH & PLASTER SKIM COAT		
		VB	VINYL BASE		



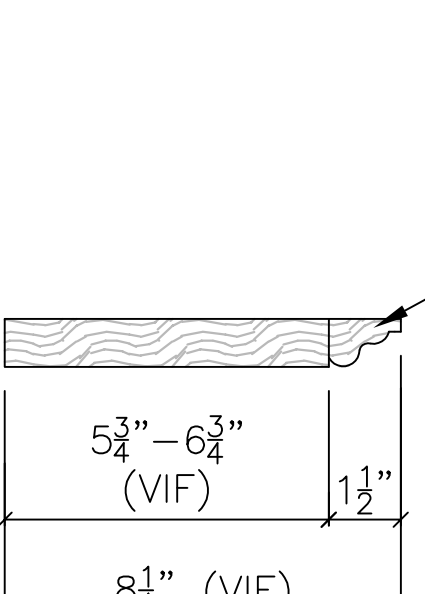
(E)WAINSCOT (CORRIDOR)



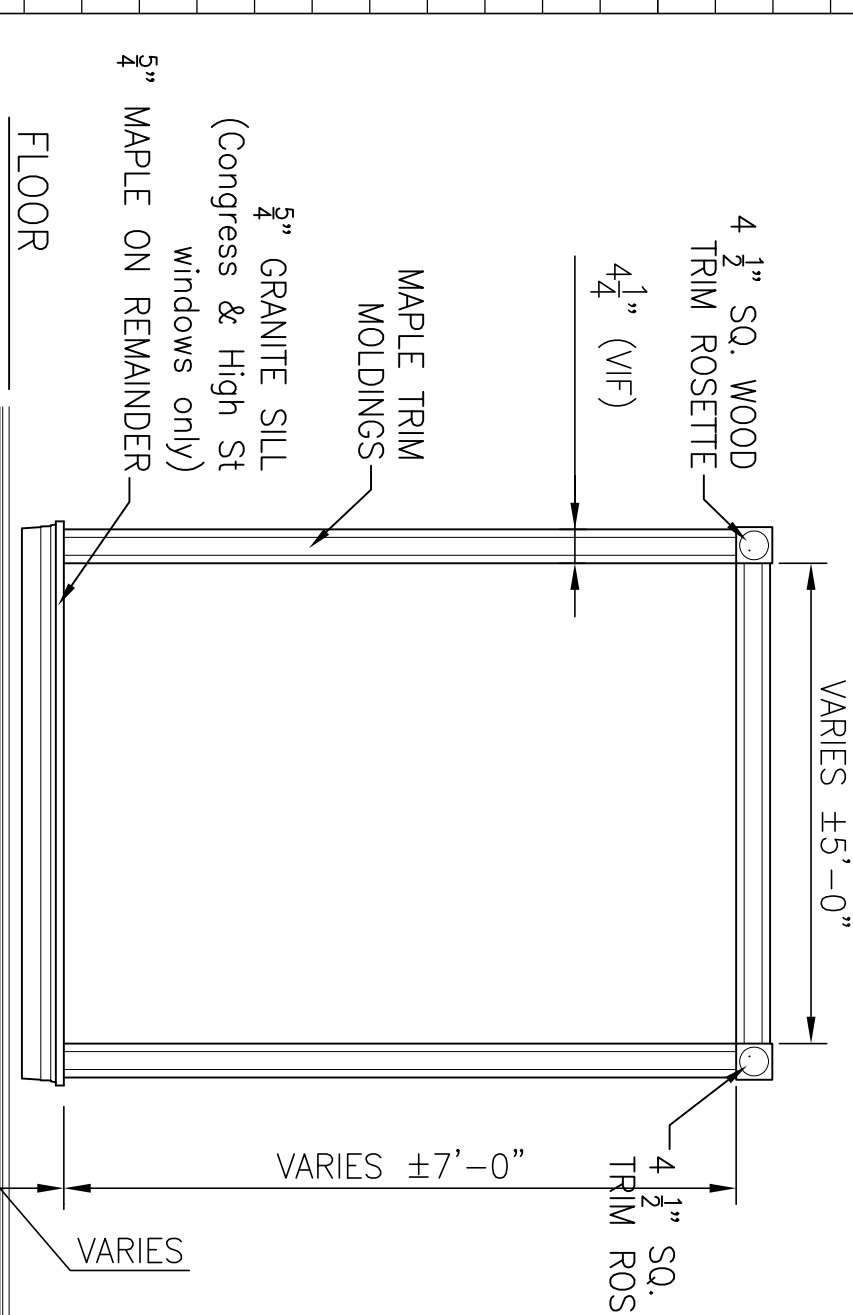
(E)WOOD WAINSCOT-CORRIDOR  
(GC VERIFY IN FIELD)  
3" = 1'-0"



(E)BASEBOARD (CORRIDOR)



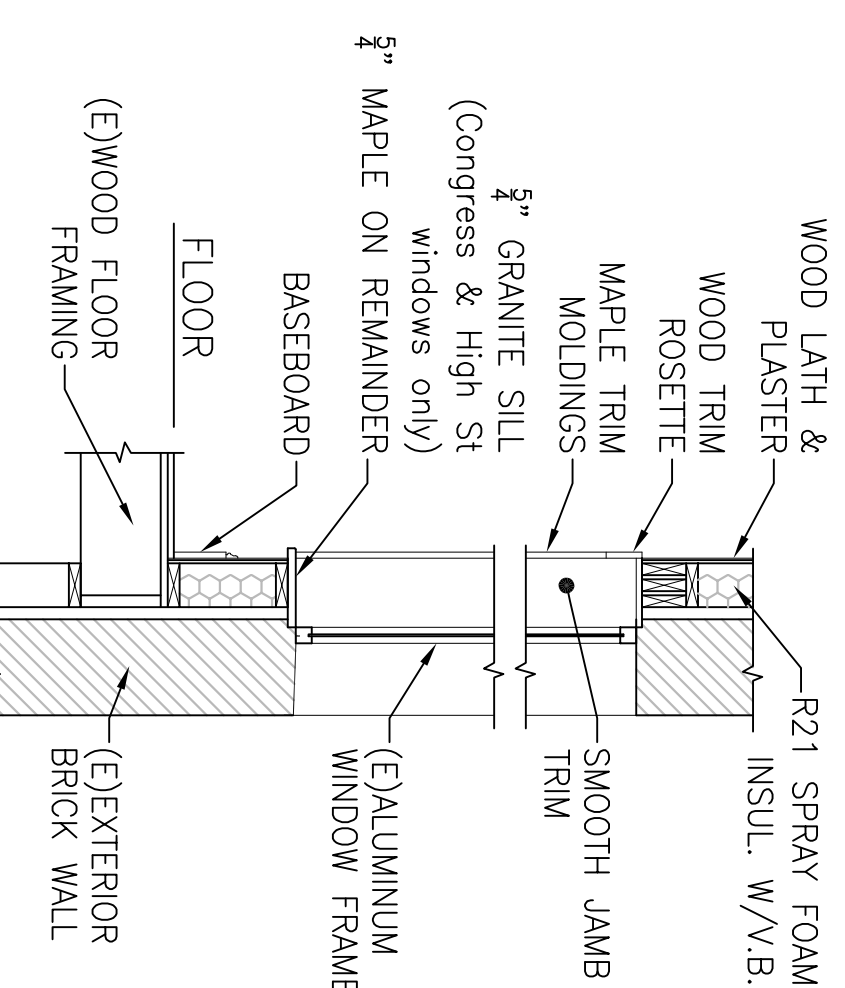
(E) 8" WOOD BASEBOARD  
(GC VERIFY IN FIELD)  
3" = 1'-0"



ELEVATION-WINDOWS  
1/2" = 1'-0"  
ALT. WOOD: POPLAR



SUITE 202 - WOOD MOLDINGS



SECTION-WINDOWS  
1/2" = 1'-0"  
ALT. WOOD: POPLAR

SHWARTZ BUILDING RENOVATIONS  
600-604 CONGRESS STREET  
PORTLAND, MAINE  
ROOM FINISH SCHEDULE



JOHN H. LEASURE ARCHITECT, INC.  
6 Q STREET  
SOUTH PORTLAND, MAINE 04106

REV.	DATE	STATUS
1	4-28-17	SUBMITTED FOR PERMITS

