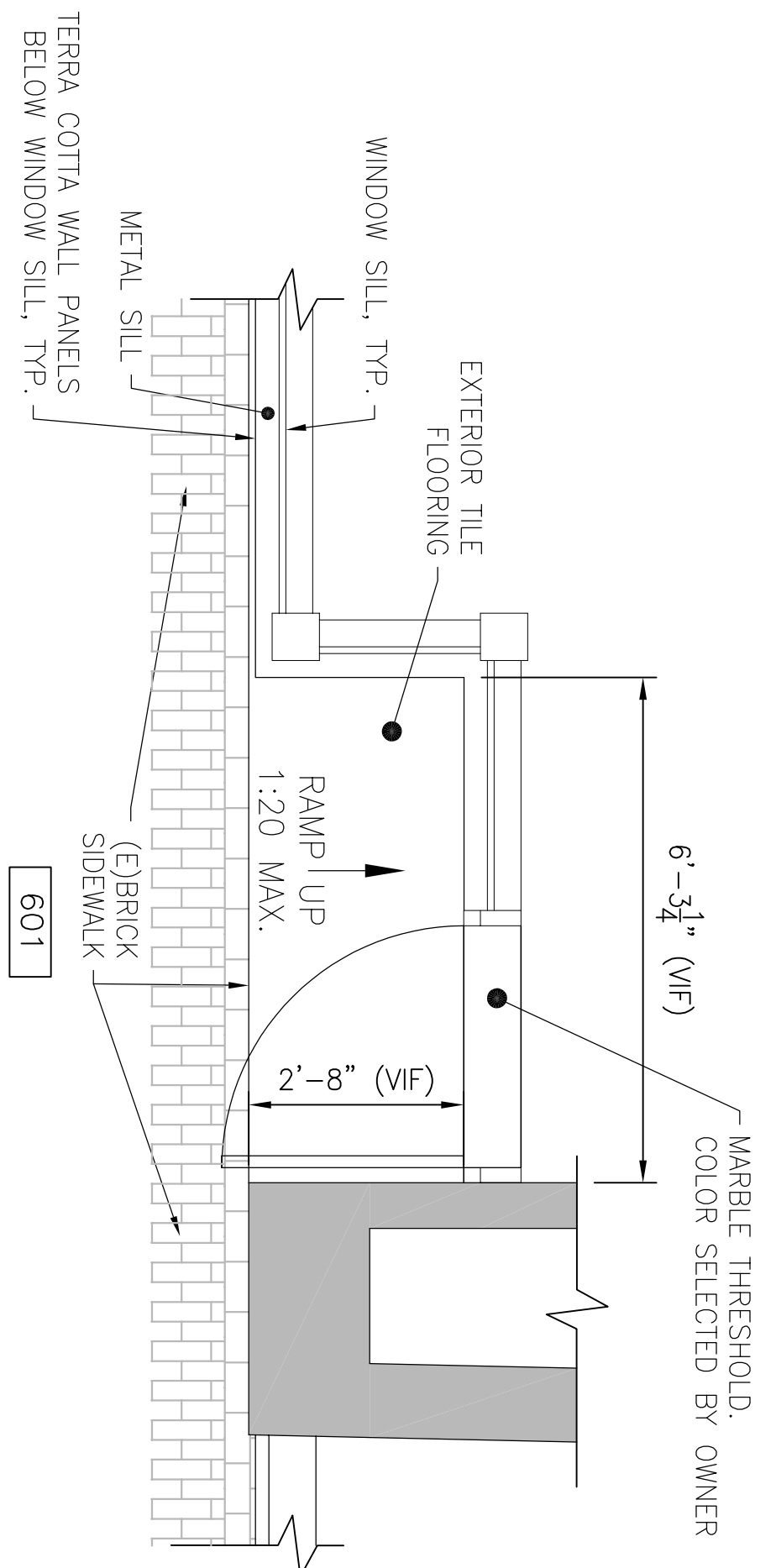


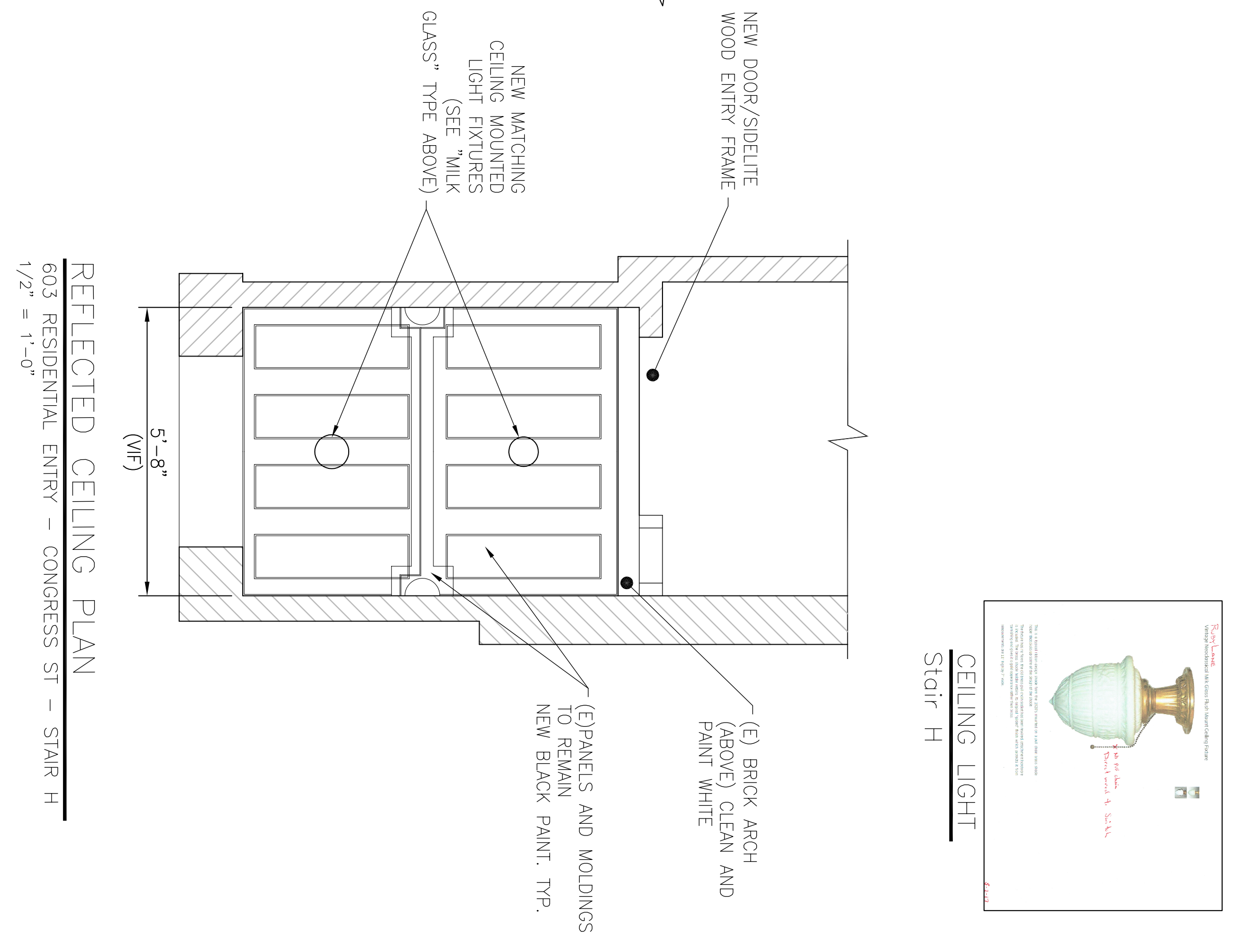
ENLARGED PLAN  
CONGRESS ST  
1/2" = 1'-0"



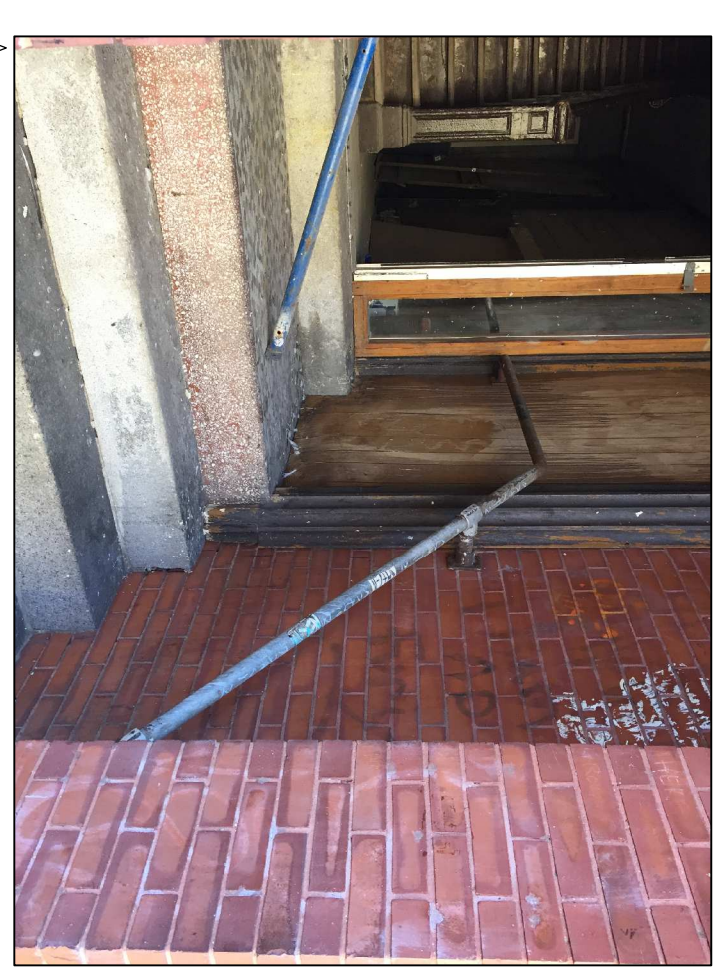
ENLARGED PLAN  
CONGRESS ST  
1/2" = 1'-0"



601 ENTRY  
Commercial



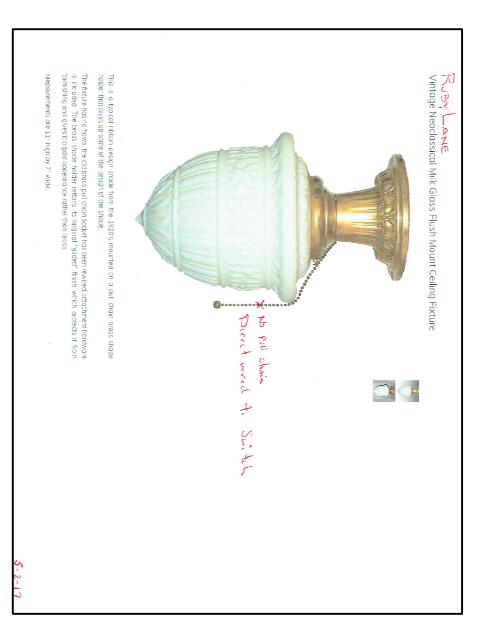
REFLECTED CEILING PLAN  
603 RESIDENTIAL ENTRY - CONGRESS ST - STAIR H  
1/2" = 1'-0"



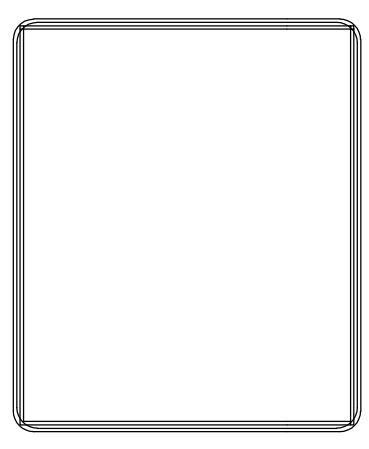
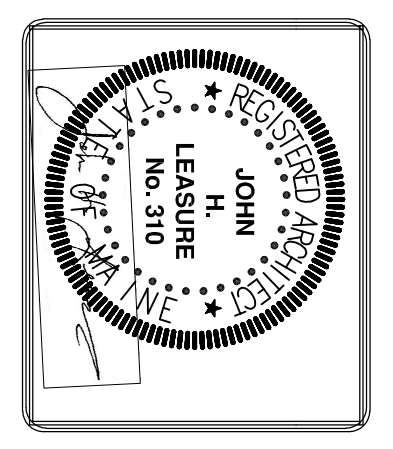
603 ENTRY STAIRS  
Residential Apartments



603 ENTRY CEILING  
Residential Apartments



REV.	DATE	STATUS
1	4-28-17	SUBMITTED FOR PERMITS



SHWARTZ BUILDING RENOVATIONS  
600-604 CONGRESS STREET  
PORTLAND, MAINE  
DETAILS

**A29**

JOHN H. LEASURE ARCHITECT, INC.  
6 Q STREET  
SOUTH PORTLAND, MAINE 04106