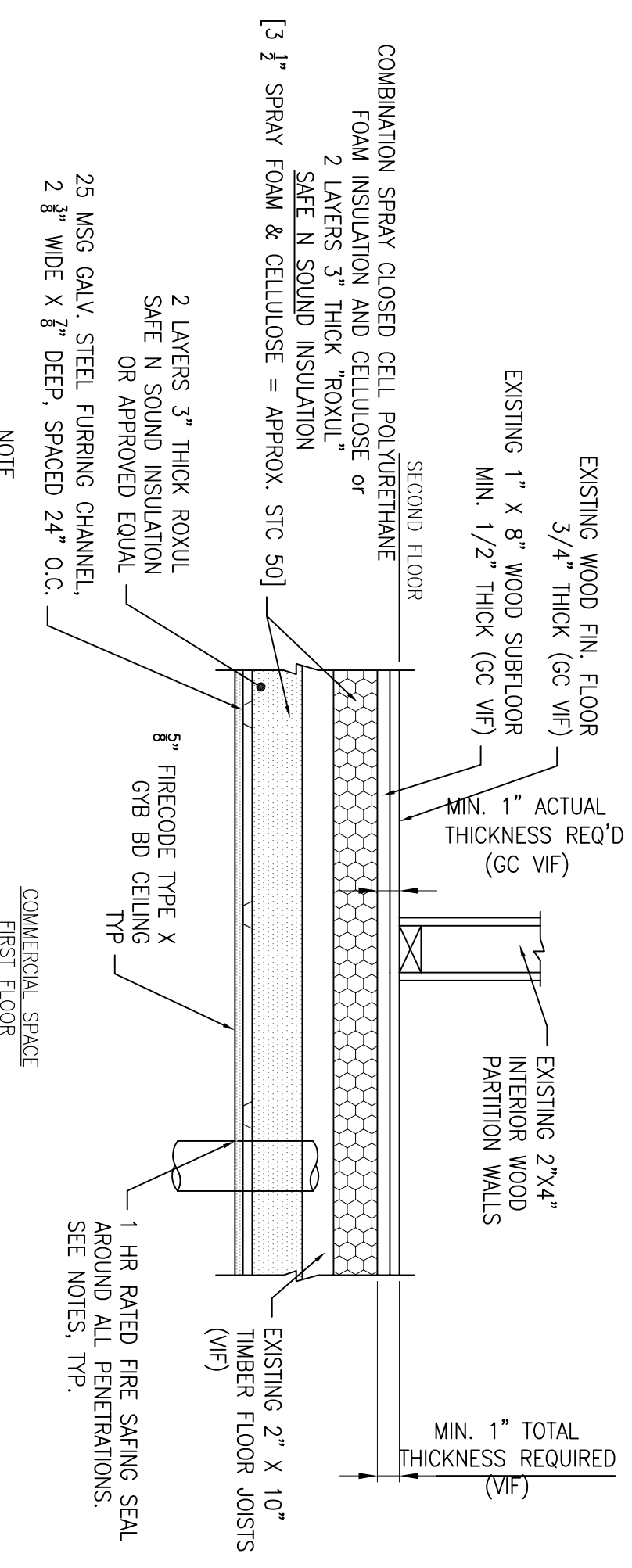
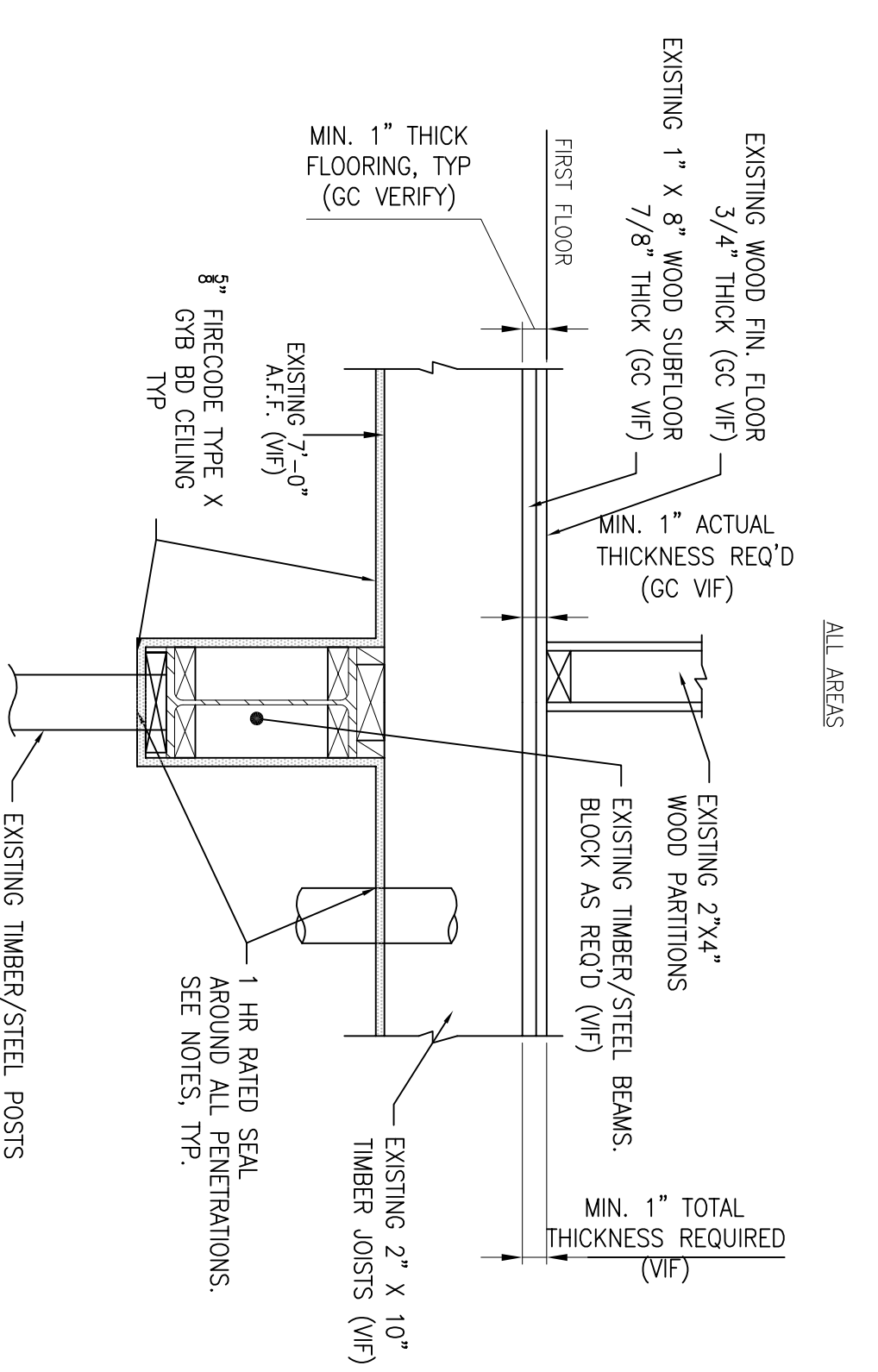


NOTE
FOR ADD'L ACOUSTIC RATING -
PROVIDE: ADD'L 3/4\"/>

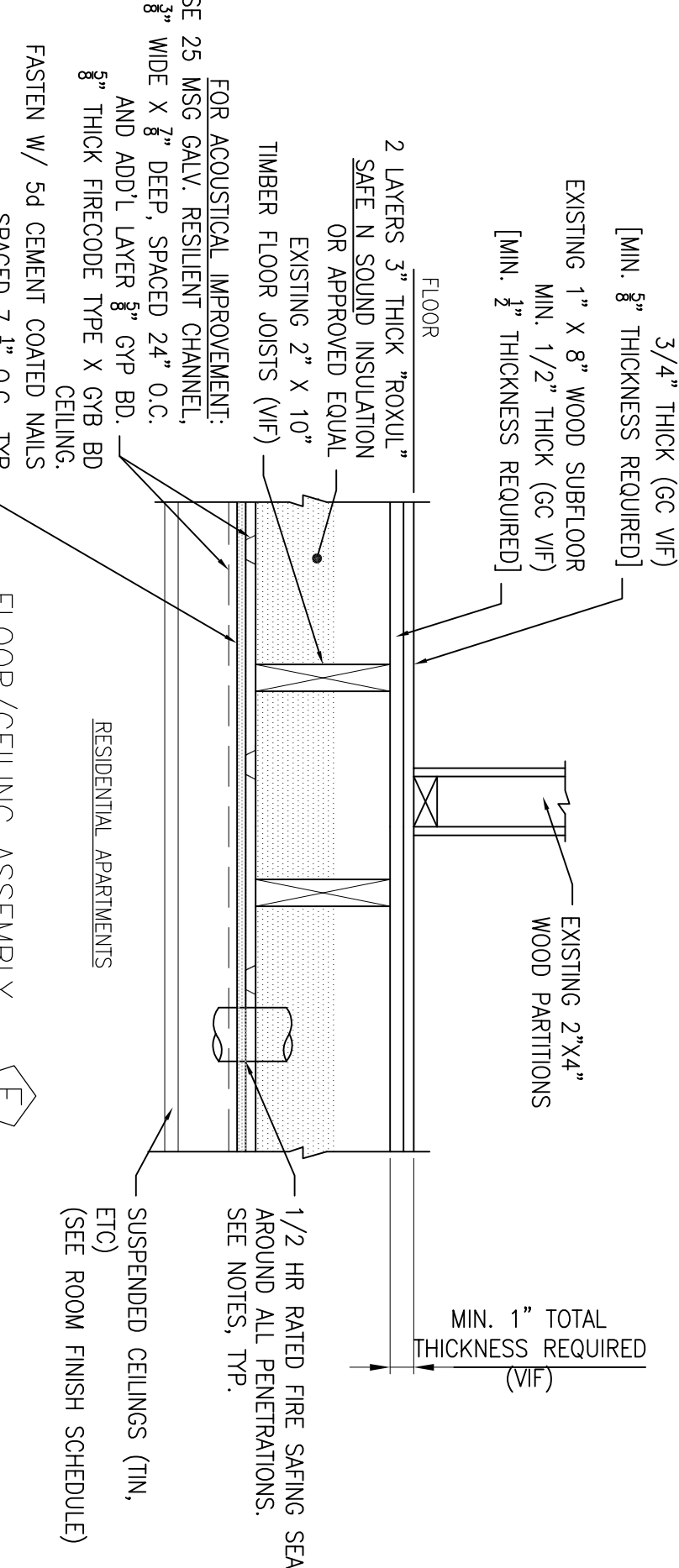
FLOOR/CEILING ASSEMBLY A
UL DESIGN No. L514 (System No. 1)
(1 HOUR UNRESTRAINED ASSEMBLY RATING)
APPROX. STC RATING = 50



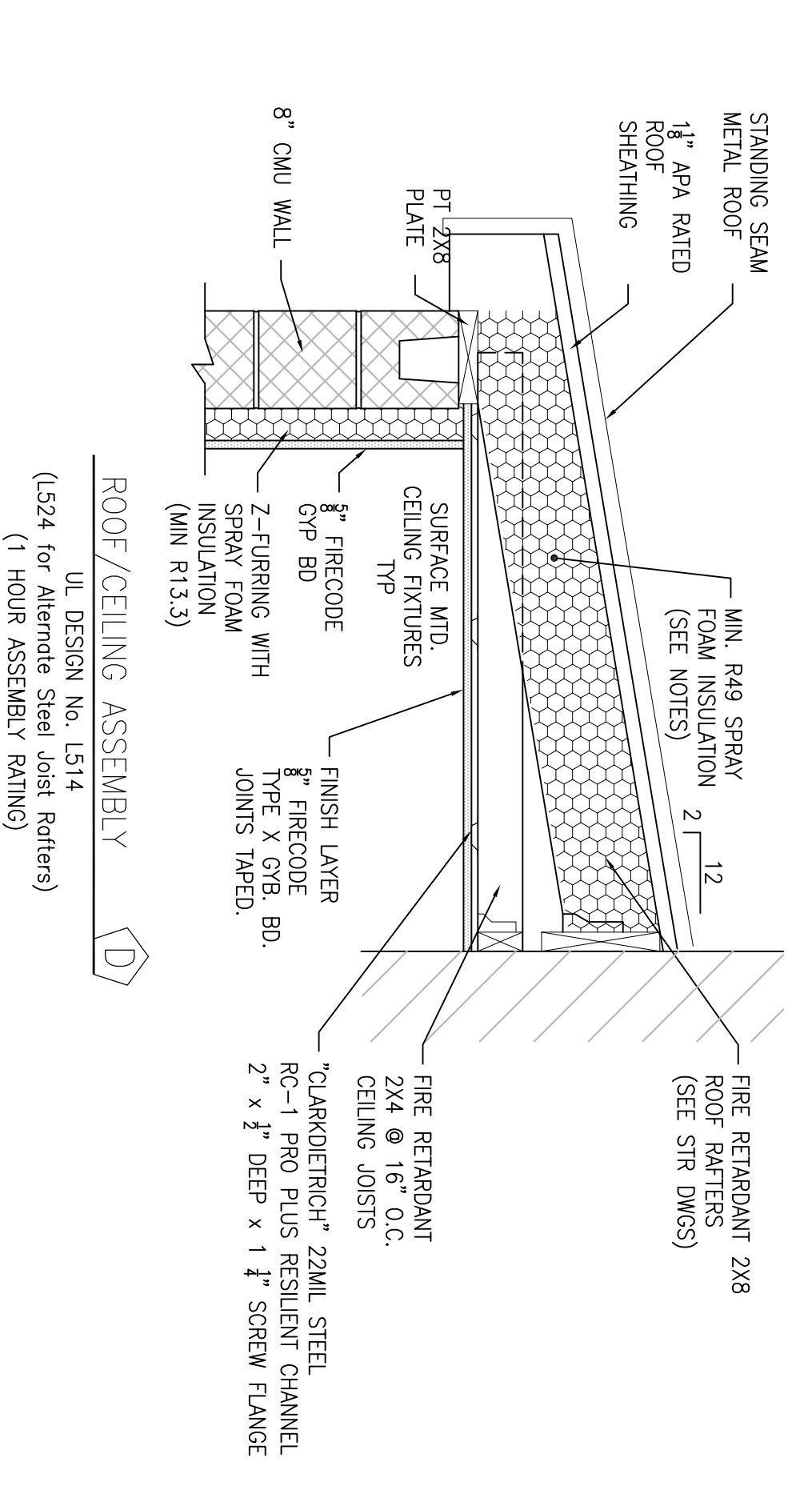
FLOOR/CEILING ASSEMBLY A1
UL DESIGN No. L514 (System No. 1)
(1 HOUR UNRESTRAINED ASSEMBLY RATING)
APPROX. STC RATING = 50



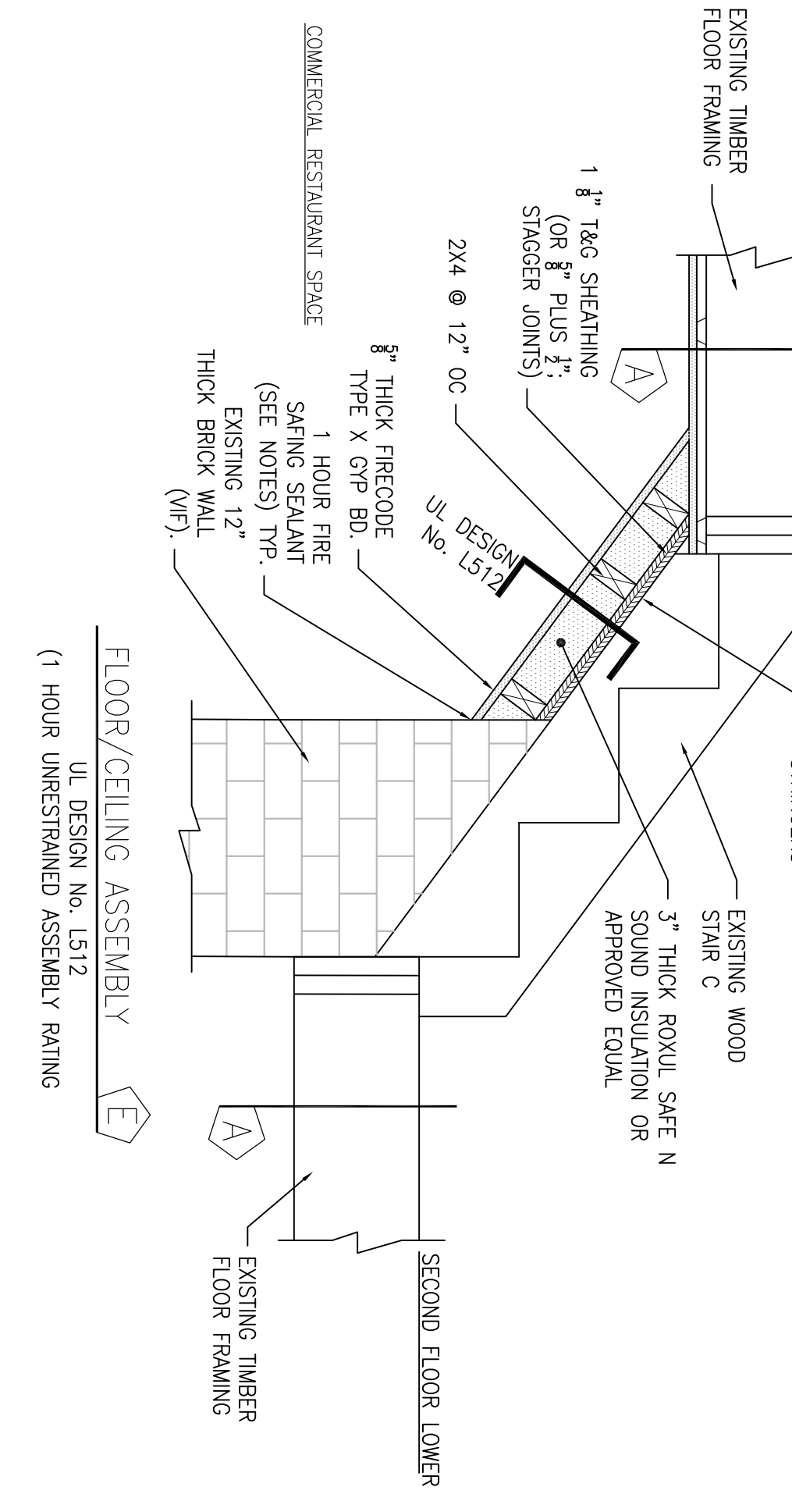
FLOOR/CEILING ASSEMBLY B
UL DESIGN No. L512 (System No. 1)
(1 HOUR UNRESTRAINED ASSEMBLY RATING)



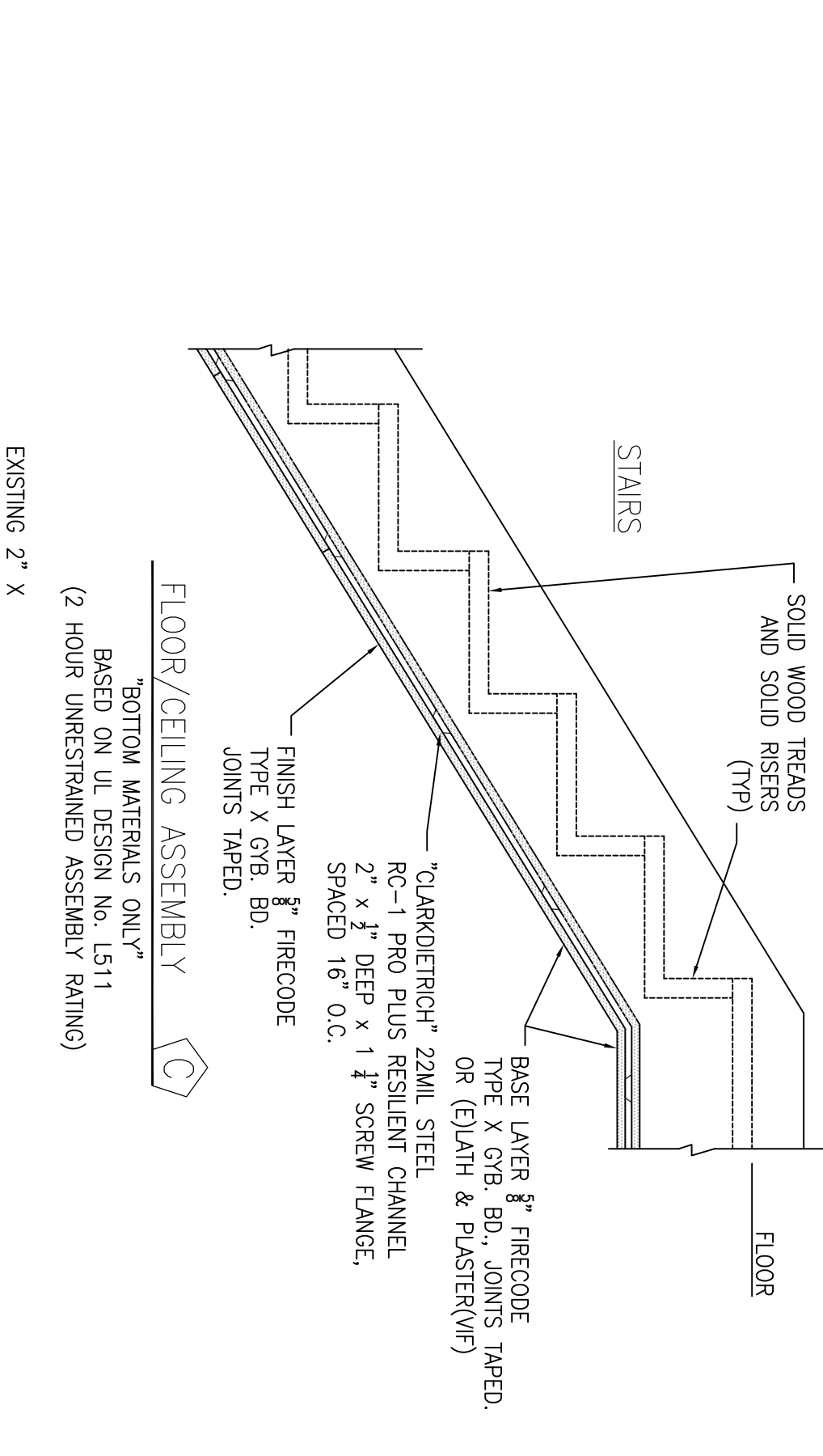
FLOOR/CEILING ASSEMBLY F
UL DESIGN No. L509
(1/2 HOUR UNRESTRAINED ASSEMBLY RATING)
APPROX. STC RATING W/RESIL. CHANNEL = 50



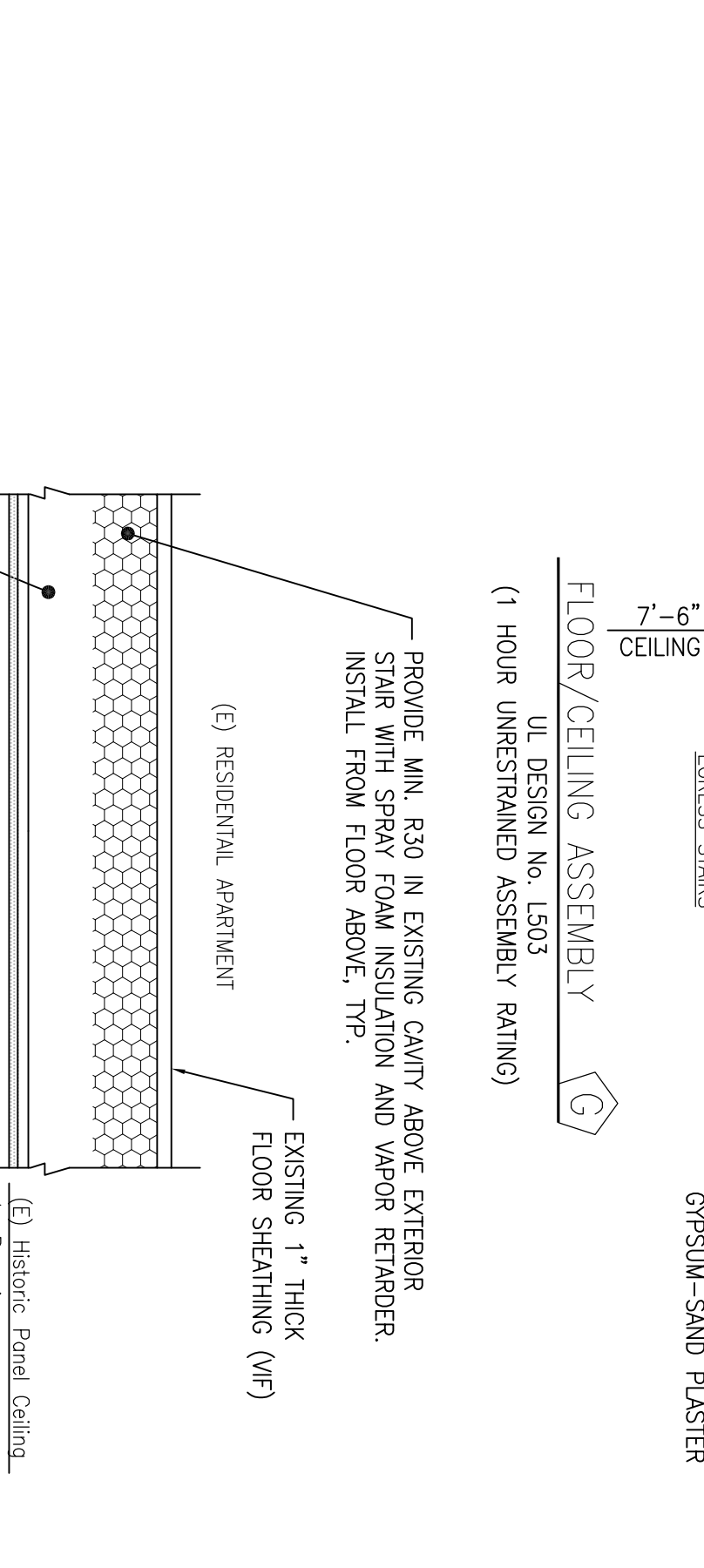
ROOF/CEILING ASSEMBLY D
UL DESIGN No. L514
(L524 for Alternate Steel Joist Rafter)
(1 HOUR ASSEMBLY RATING)



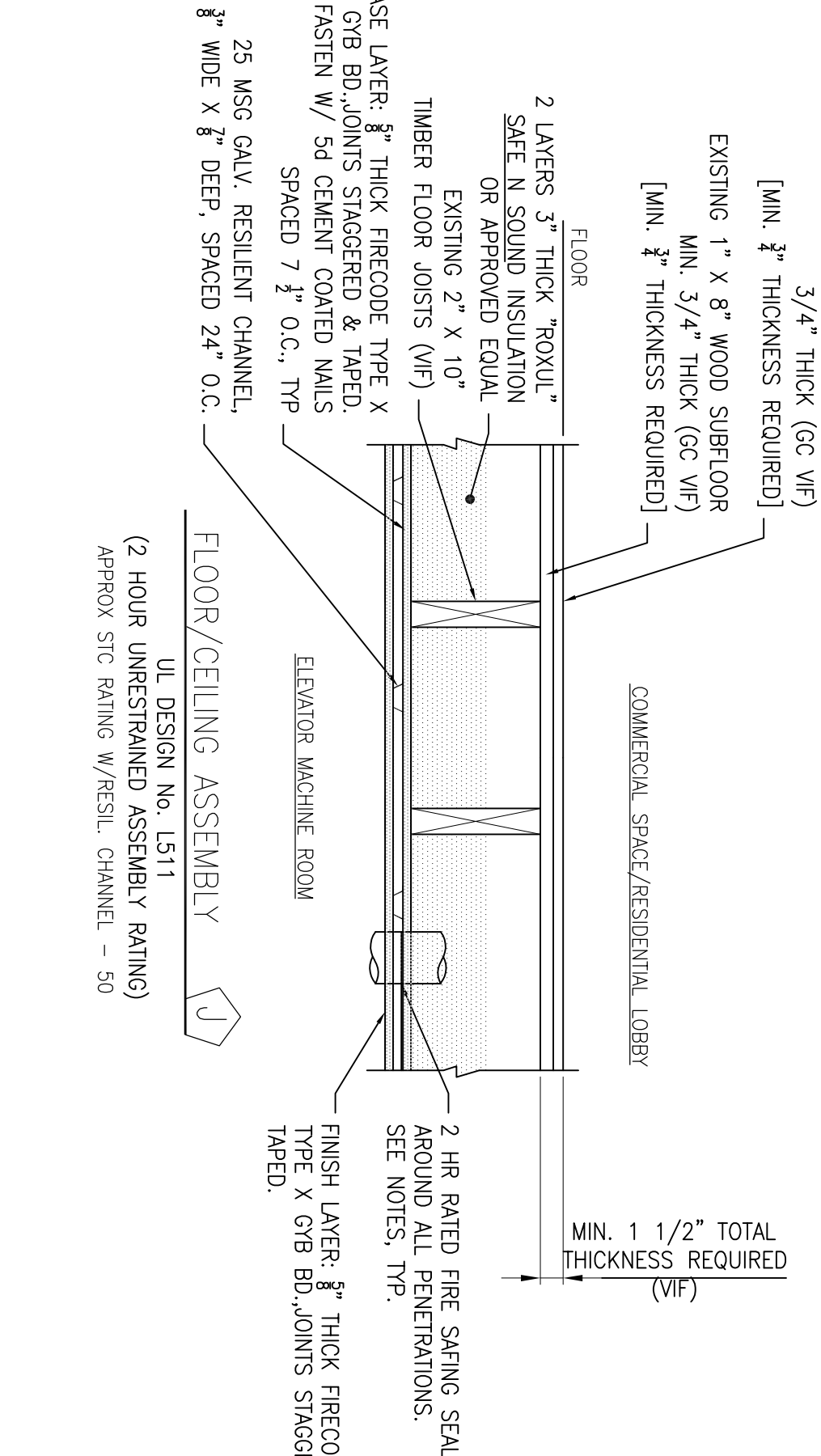
FLOOR/CEILING ASSEMBLY E
UL DESIGN No. L512
(1 HOUR UNRESTRAINED ASSEMBLY RATING)



FLOOR/CEILING ASSEMBLY C
BOTTOM MATERIALS ONLY
BASED ON UL DESIGN No. L511
(2 HOUR UNRESTRAINED ASSEMBLY RATING)



FLOOR/CEILING ASSEMBLY H
UL DESIGN No. L511
(2 HOUR UNRESTRAINED ASSEMBLY RATING)
APPROX. STC RATING W/RESIL. CHANNEL = 50



FLOOR/CEILING ASSEMBLY J
UL DESIGN No. L511
(2 HOUR UNRESTRAINED ASSEMBLY RATING)
APPROX. STC RATING W/RESIL. CHANNEL = 50

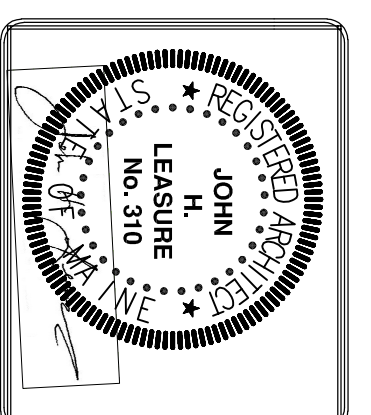
CEILING TYPES

NOTES:
1. ALL FIRE RATED CEILINGS SHALL BE CONTINUOUS. HOUR APPROVED FIRE RATED SAFFING AND/OR 1 HOUR RATED MINERAL WOOL FIBERBOARD. OWENS CORNING "THERMABARRIER" MINERAL WOOL. GAPS, CRACKS AND VOIDS SHALL BE SEALED WITH 3M FP-1 FOM OR APPROVED EQUALS.
2. IF NO RATED CEILING SELECTED BY OWNER IN FIRE RATED STAIR ENCLOSURES, THEN FIRE RATED WALL ASSEMBLIES SHALL EXTEND TO THE UNDERSIDE OF ROOF DECKING. SEAL ALL PENETRATIONS, CRACKS & VOIDS WITH 1 HOUR FIRE SAFFING.

3. GC VERIFY EXISTING CEILING MATERIALS AND FINISHERS. TAPER AND BLEND NEW CEILING FINISH TO EXISTING FINISH FOR SMOOTH TRANSITION.
4. SEAL ALL CRACK, GAPS, VOIDS WITH 1 HOUR FIRE RATED "THERMABARRIER" MINERAL WOOL SAFFING IN CONJUNCTION WITH AN APPROVED 1 HOUR RATED CAVITY MATERIAL SEALANT. (3M FP-1 OR EQUAL)
5. FOAM INSULATION SHALL BE HIGH DENSITY CLOSED CELL TYPE, MIN. 2.0 pcf WITH VAPOR PERM RATING OF 0.1 OR LESS (CLASS 1 VAPOR RETARDER) TYP.
6. SHEET METAL DUCTWORK-PROVIDE FIRE DAMPERS & ACCESS PANELS AS REQ'D BY CODE. (REFER TO MEP DWGS)

SHWARTZ BUILDING RENOVATIONS
600-604 CONGRESS STREET
PORTLAND, MAINE
CEILING TYPES

REV.	DATE	STATUS
.	3-30-17	STATE FIRE MARSHAL SUBMISSION
1	4-28-17	SUBMITTED FOR PERMITS



JOHN H. LEASURE ARCHITECT, INC.
6 Q STREET
SOUTH PORTLAND, MAINE 04106

