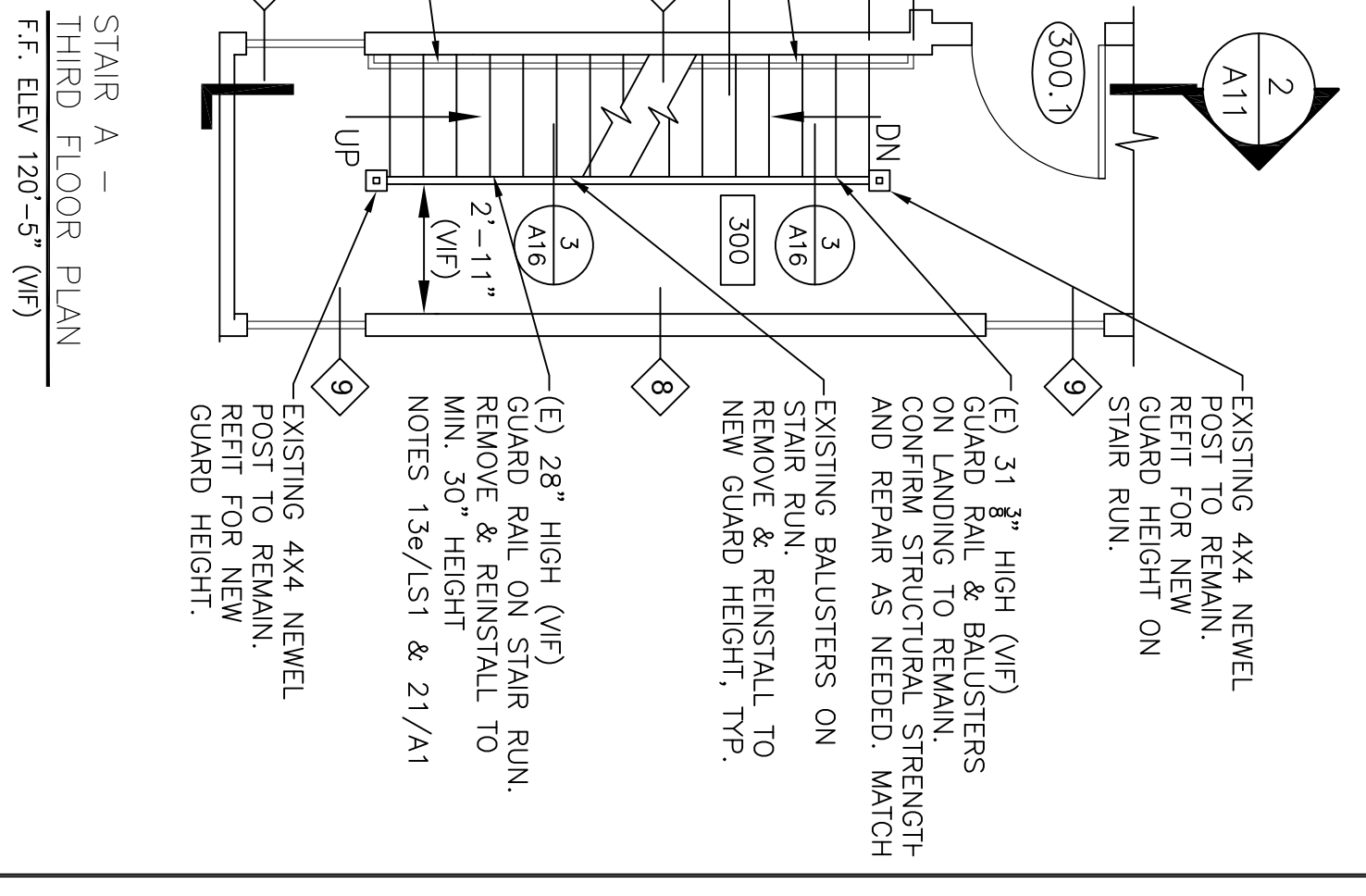
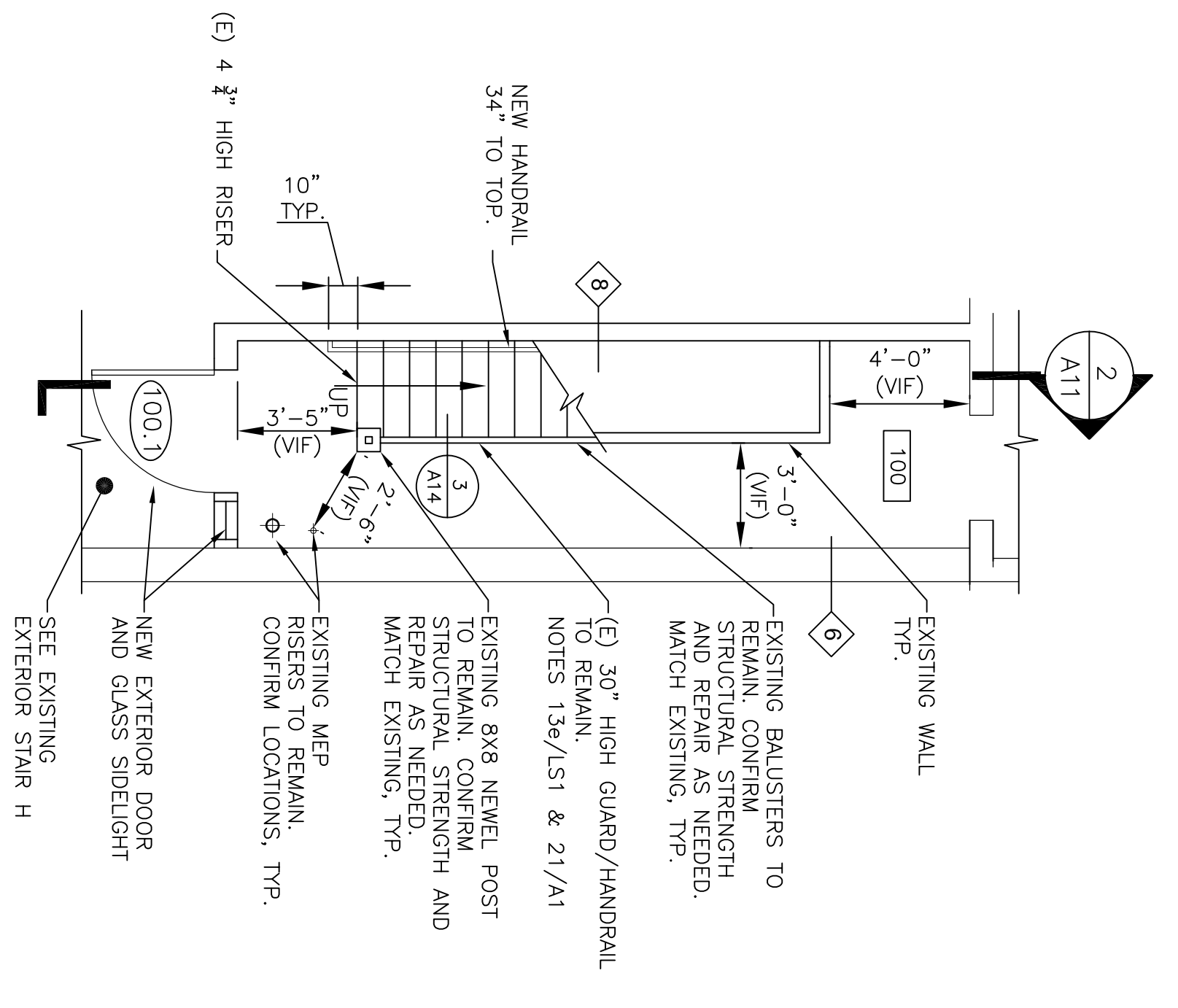


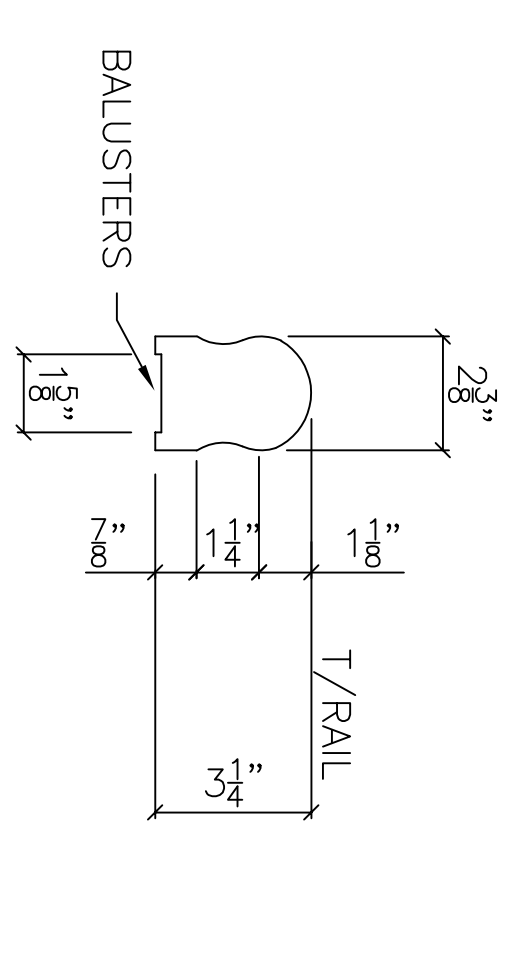
STAIR A -
SECOND FLOOR PLAN
F.F. ELEV 109'-11" (V/F)

STAIR A -
FOURTH FLOOR PLAN
F.F. ELEV 130'-11" (V/F)

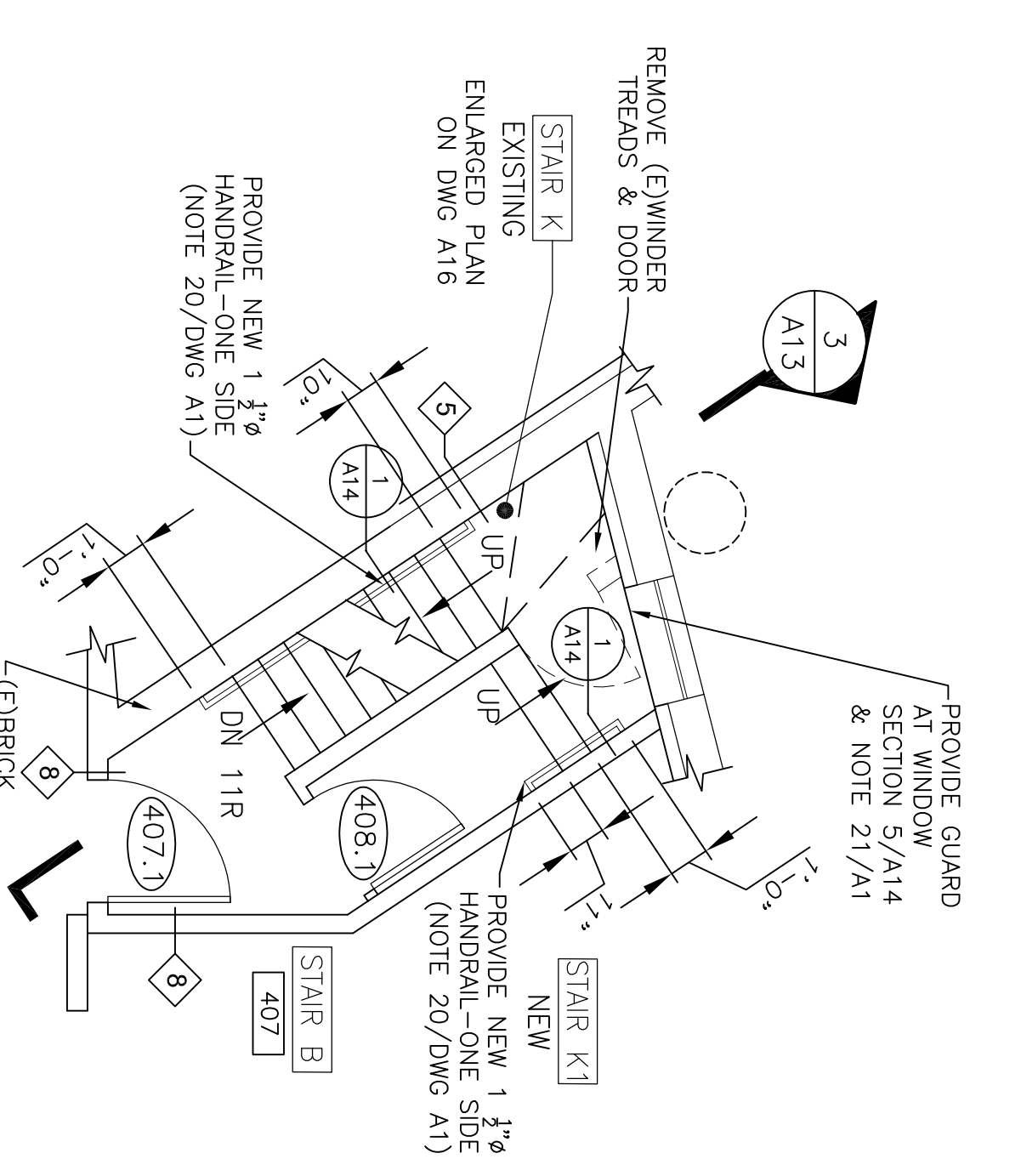
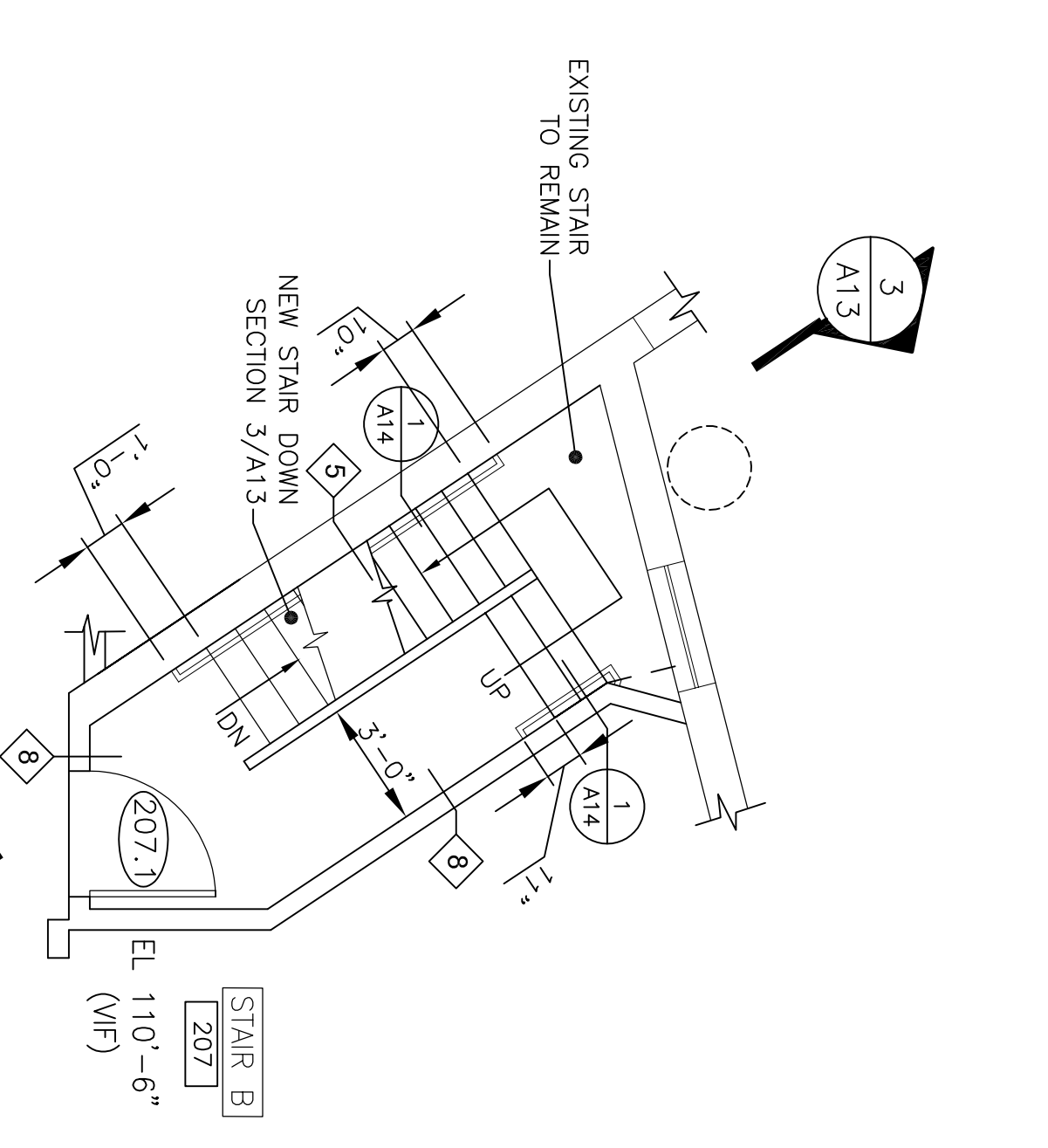


STAIR A -
FIRST FLOOR PLAN
F.F. ELEV 100'-0" (RFB)

STAIR A -
THIRD FLOOR PLAN
F.F. ELEV 120'-5" (V/F)

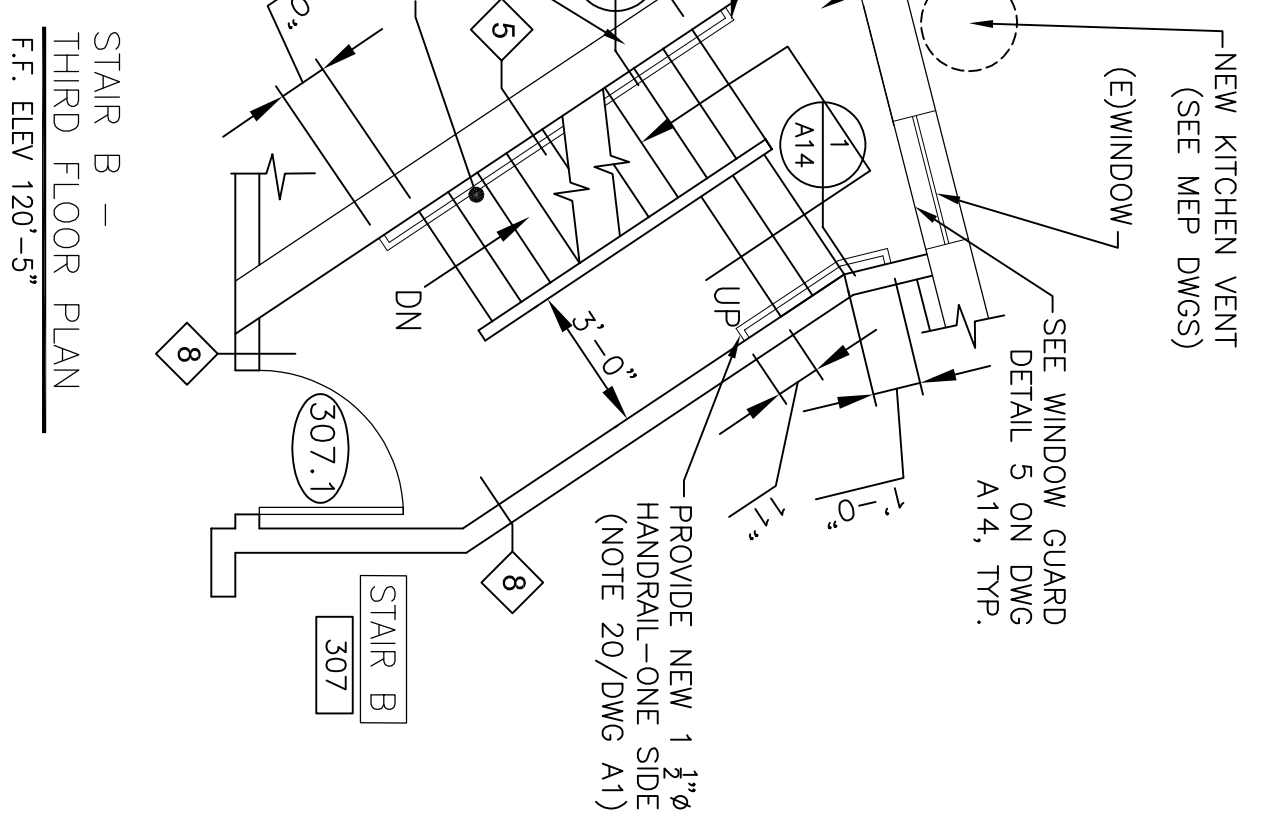
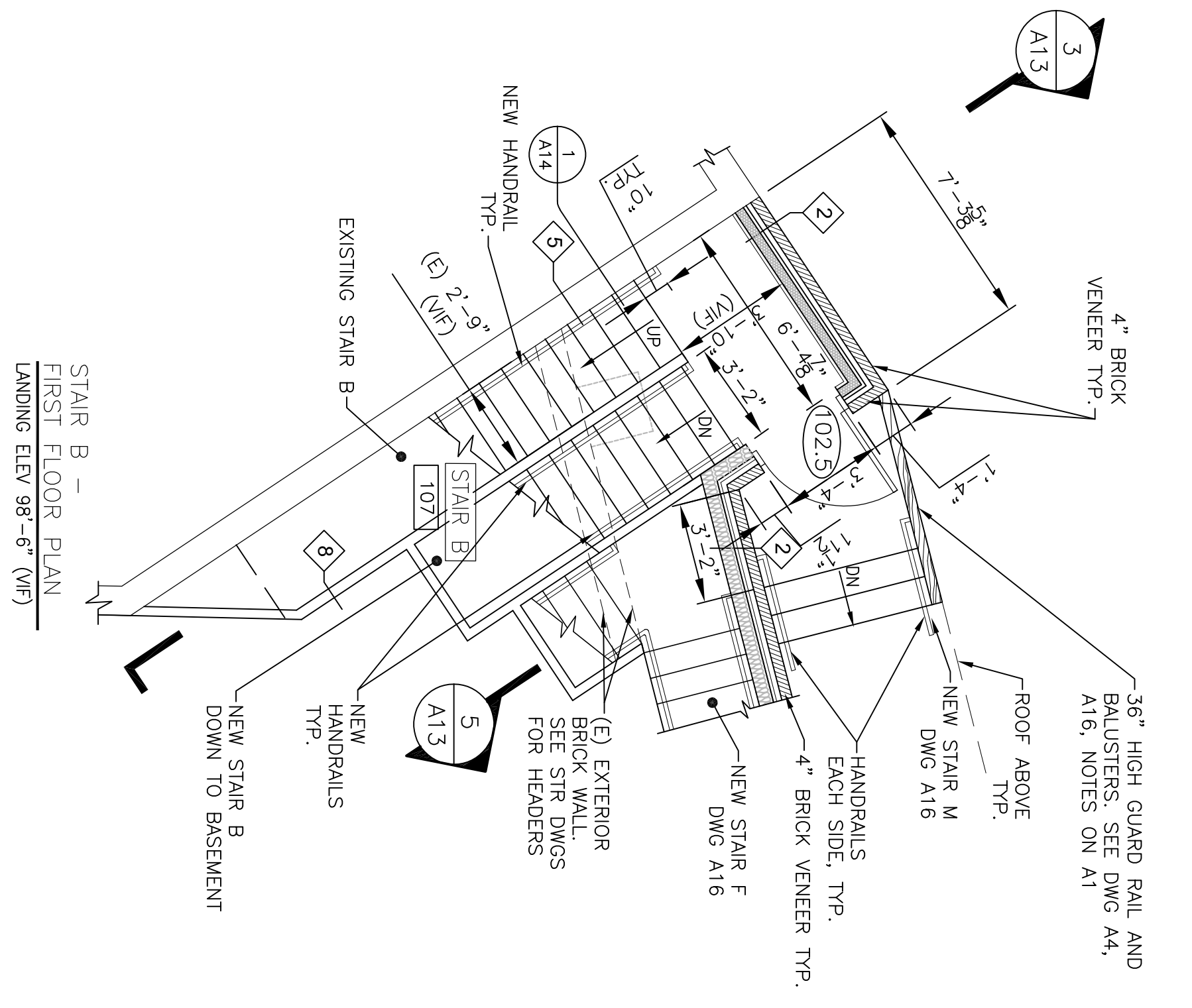


- NOTES:
1. SEE STAIR NOTES ON DRAWING A1
 2. TOP OF HANDRAILS SHALL BE 34" ABOVE LEADING EDGE OF TREADS, U.N.O. (TYP)
 3. WALL TYPES DRAWING A20



STAIR B -
SECOND FLOOR PLAN
F.F. ELEV 110'-8"

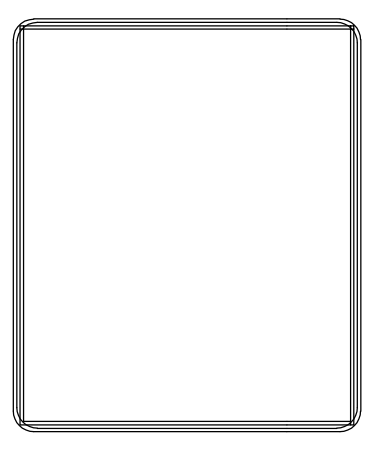
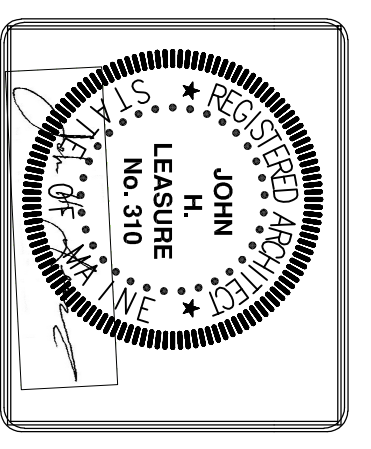
STAIR B -
FOURTH FLOOR PLAN
F.F. ELEV 130'-11"



STAIR B -
FIRST FLOOR PLAN
LANDING ELEV 98'-6" (V/F)

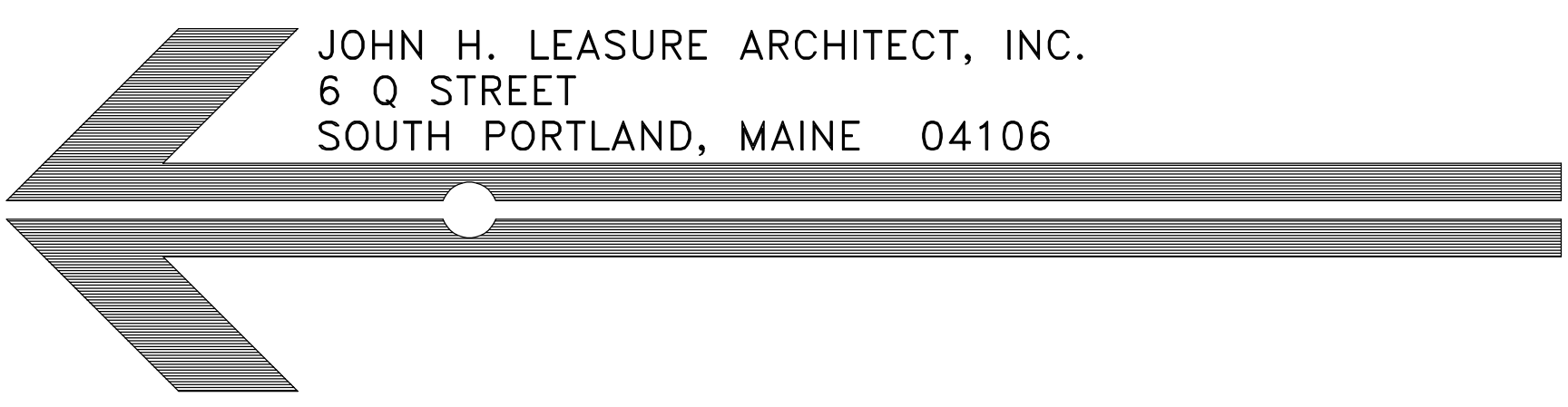
STAIR B -
THIRD FLOOR PLAN
F.F. ELEV 120'-5"

REV.	DATE	STATUS
.	3-30-17	STATE FIRE MARSHAL SUBMISSION
1	4-28-17	SUBMITTED FOR PERMITS



SHWARTZ BUILDING RENOVATIONS
600-604 CONGRESS STREET
PORTLAND, MAINE
EXISTING STAIRS A AND B

A15



JOHN H. LEASURE ARCHITECT, INC.
6 Q STREET
SOUTH PORTLAND, MAINE 04106