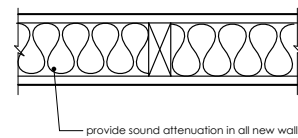
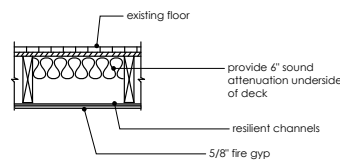


1 INTERIOR PARTITION
NOT RATED

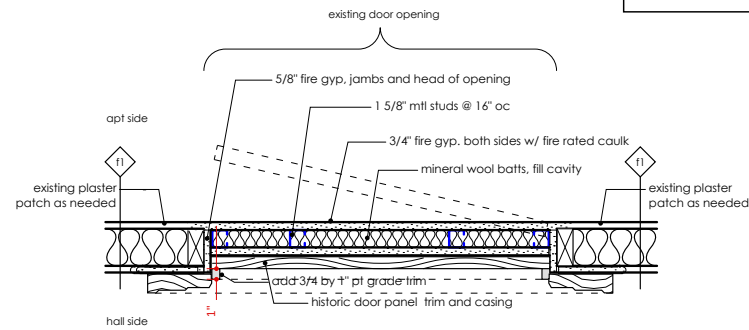
2 MASONRY WALL



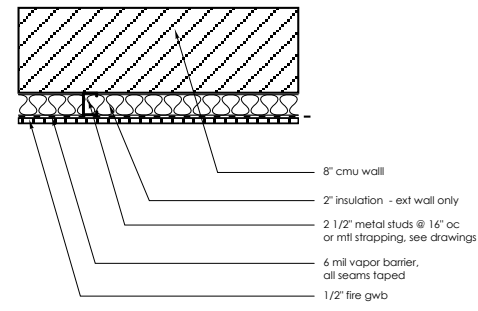
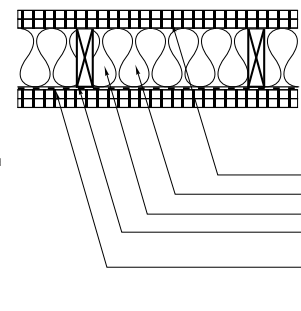
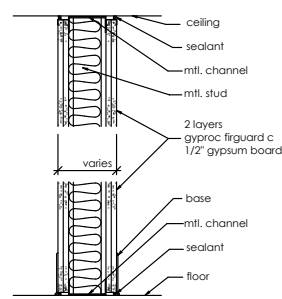
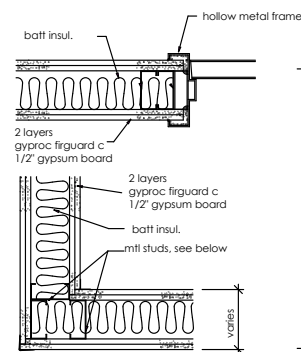
f1 1 HOUR RATED WOOD PARTITION
UL U309 5/8\"/>



f2 1 HOUR RATED CEILING ASSEMBLY
UL L501 5/8\"/>



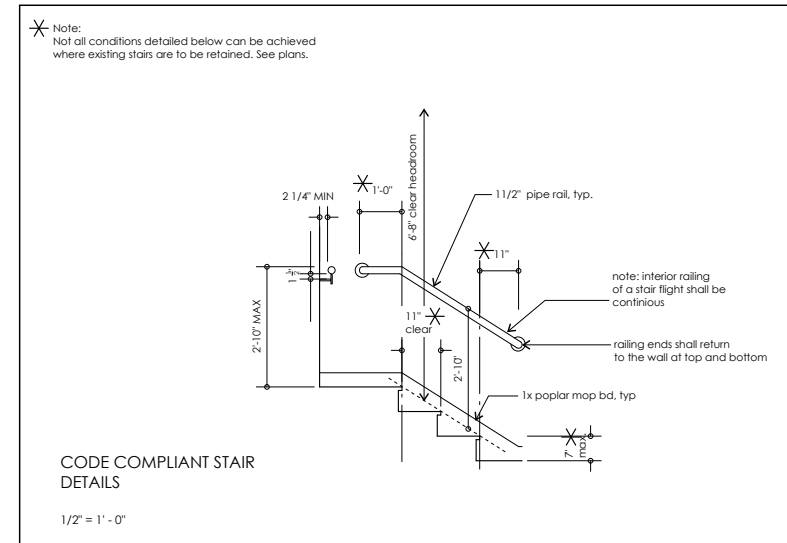
f3 1 HOUR RATED INFILL (Nonbearing)
UL 496



f2.1 2 HOUR RATED METAL PARTITION
(6\"/>

f2.2 2 HOUR RATED LOAD BEARING WALL
FIRE TEST : DESIGN U349 similar

f2.3 2 HOUR RATED LOAD BEARING WALL
FIRE TEST : DESIGN U914 similar



James Sterling AIA
Architect
142 High Street
Portland, Maine

SHWARTZ BUILDING
RENOVATIONS

WALL AND CEILING
TYPES - RATED/UNRATED

REVISIONS:
24 SEPTEMBER 2012
19 OCTOBER 2012