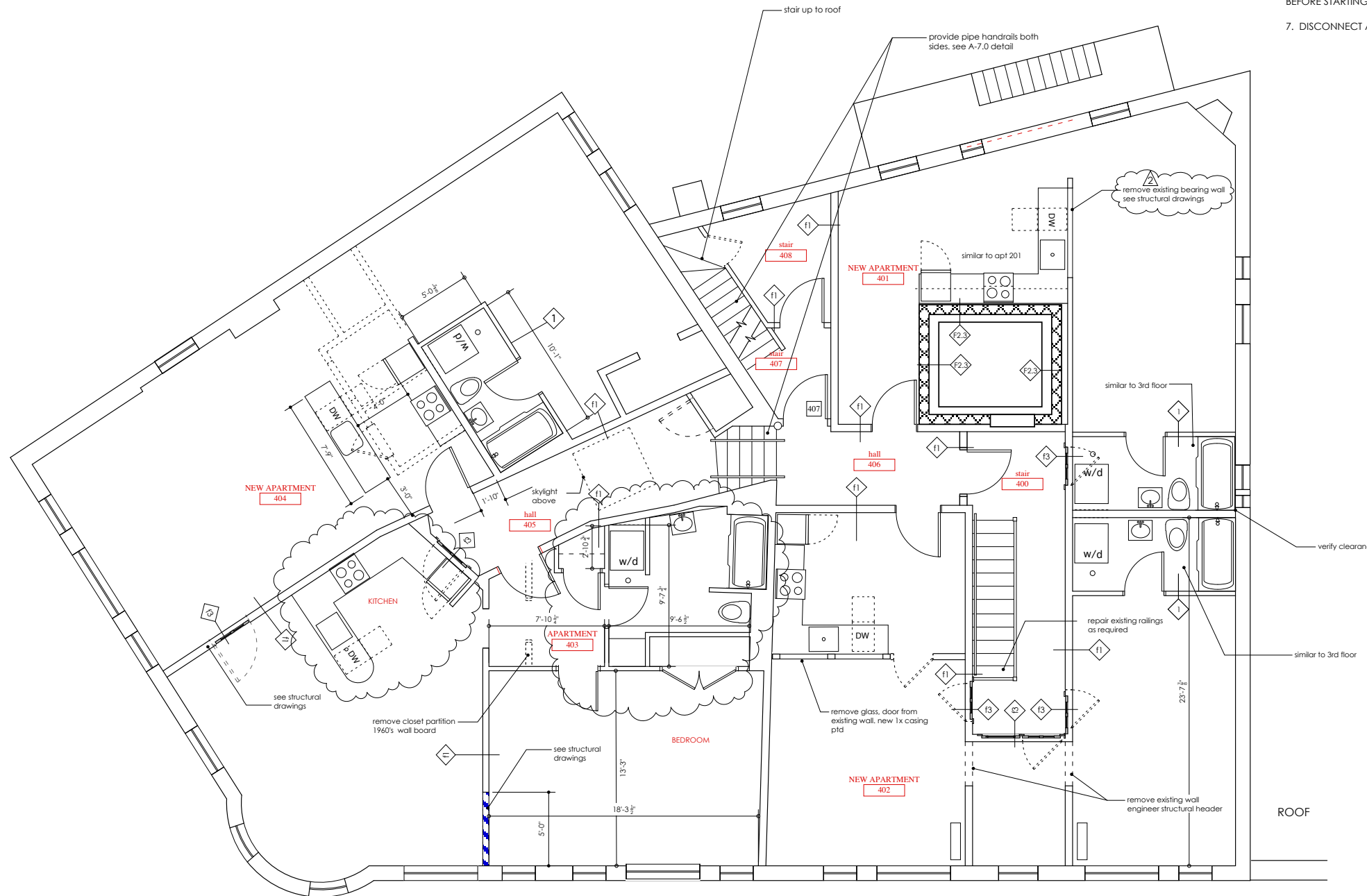


GENERAL NOTES

- DEMOLITION:
1. REMOVE ALL NON-STRUCTURAL WALLS AS SHOWN AND REMOVE EXISTING DOOR OPENINGS.
2. REMOVE ALL ELEVATOR EQUIPMENT.
3. FLOOR AND CEILING FINISHES IN NEW APARTMENTS TO BE DETERMINED BY OWNER.
4. ALL EXISTING PANELING ON BOTH SIDES OF STAIR 200 ENCLOSURE TO BE REMOVED EXPOSING EXISTING PLASTER, APPLY F1 FINISH OVER PLASTER.
5. ALL EXISTING OPENINGS TO STAIR 200 TO BE INFILLED, F1.
6. DIMENSIONS ARE FOR NEW PARTITIONS AND OPENINGS ONLY. OVERALL APARTMENT DIMENSIONS ARE FOR FIELD VERIFICATION. NOTIFY THE ARCHITECT OF ANY DISCREPANCIES BEFORE STARTING WORK.
7. DISCONNECT AND REMOVE ALL GAS PIPING.



CONTRACTOR TO VERIFY ALL EXISTING CONDITIONS AND VERIFY PROPOSED DIMENSIONS. SEE NOTE 6.

James Sterling AIA  
Architect  
142 High Street  
Portland, Maine



SHWARTZ BUILDING  
RENOVATIONS

FOURTH LEVEL

scale: 1/4" = 1'-0"

REVISIONS:  
24 SEPTEMBER 2012  
19 OCTOBER 2012



A-1.4

9/13/12