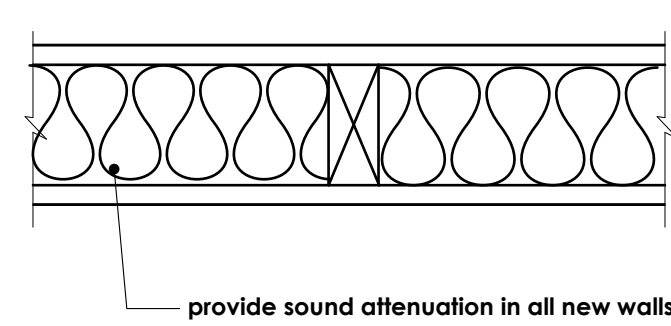
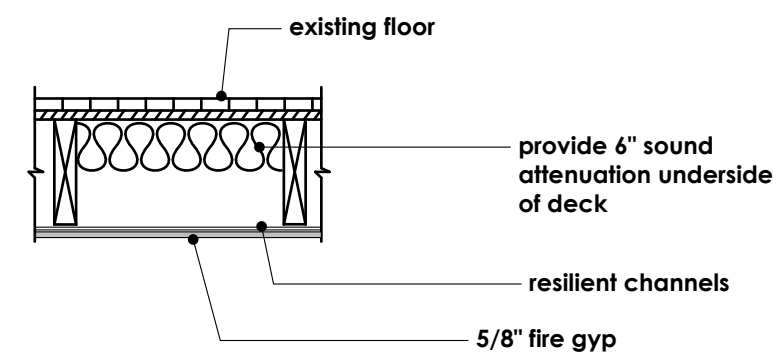


1 INTERIOR PARTITION
NOT RATED

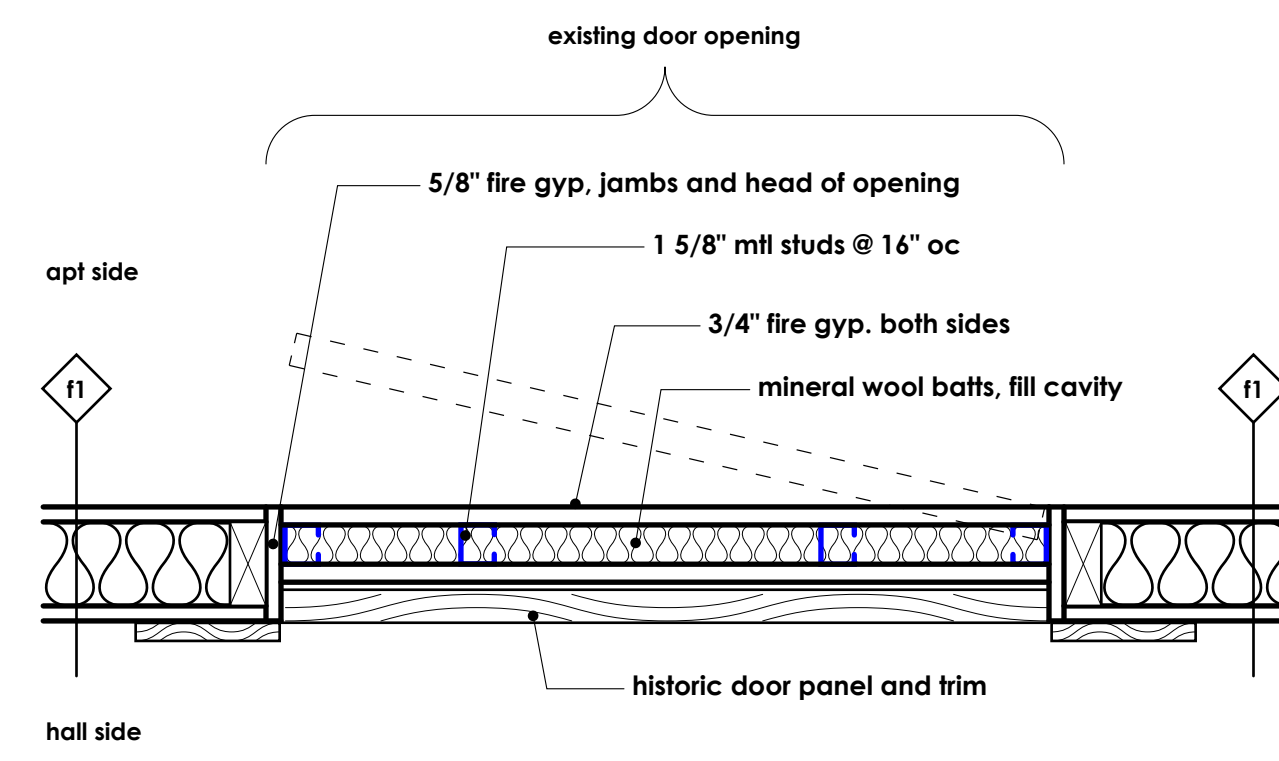
2 MASONRY WALL



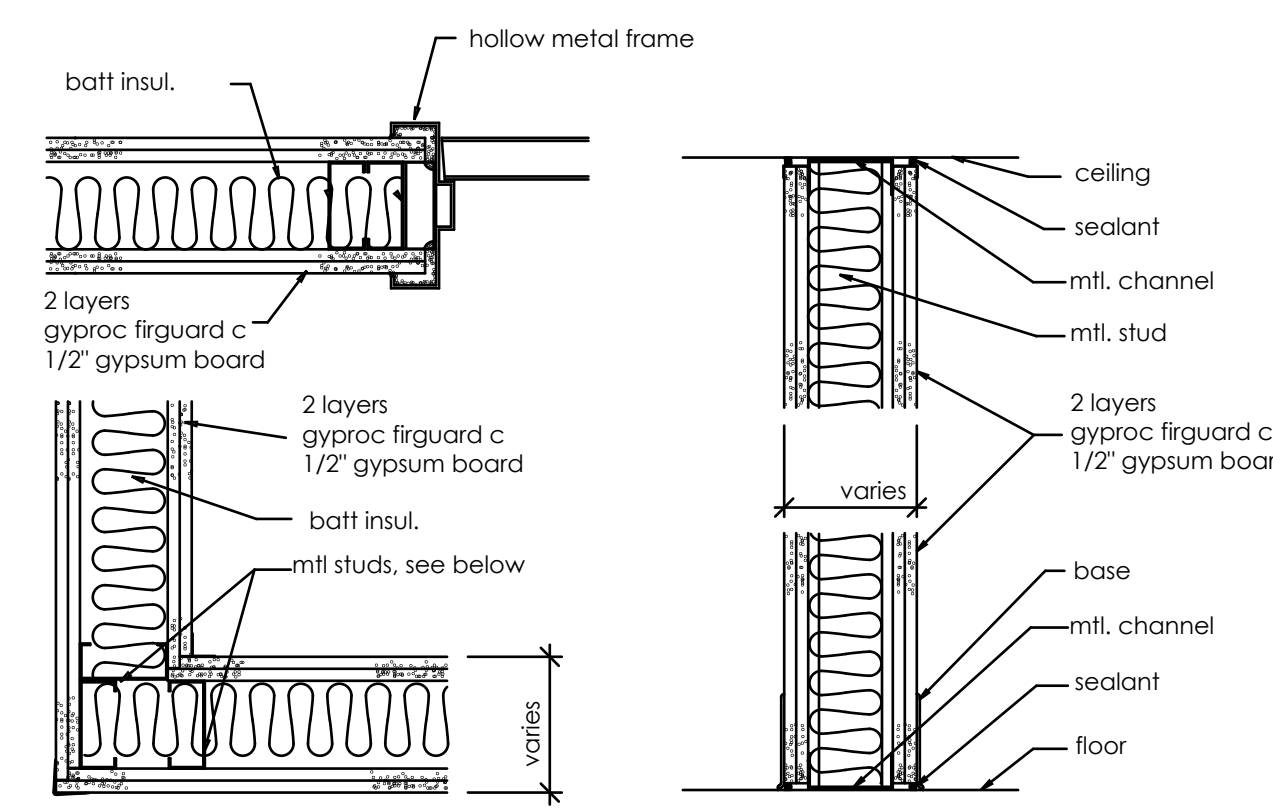
f1 1 HOUR RATED WOOD PARTITION
UL U309 5/8"(15.9mm)Fire-Shield Gypsum Wallboard or 5/8" (15.9mm)Fire-Shield MR Board nailed both sides
GA WP 3510 2x4(38 mm x 89 mm)studs,24"o.c.(610 mm).



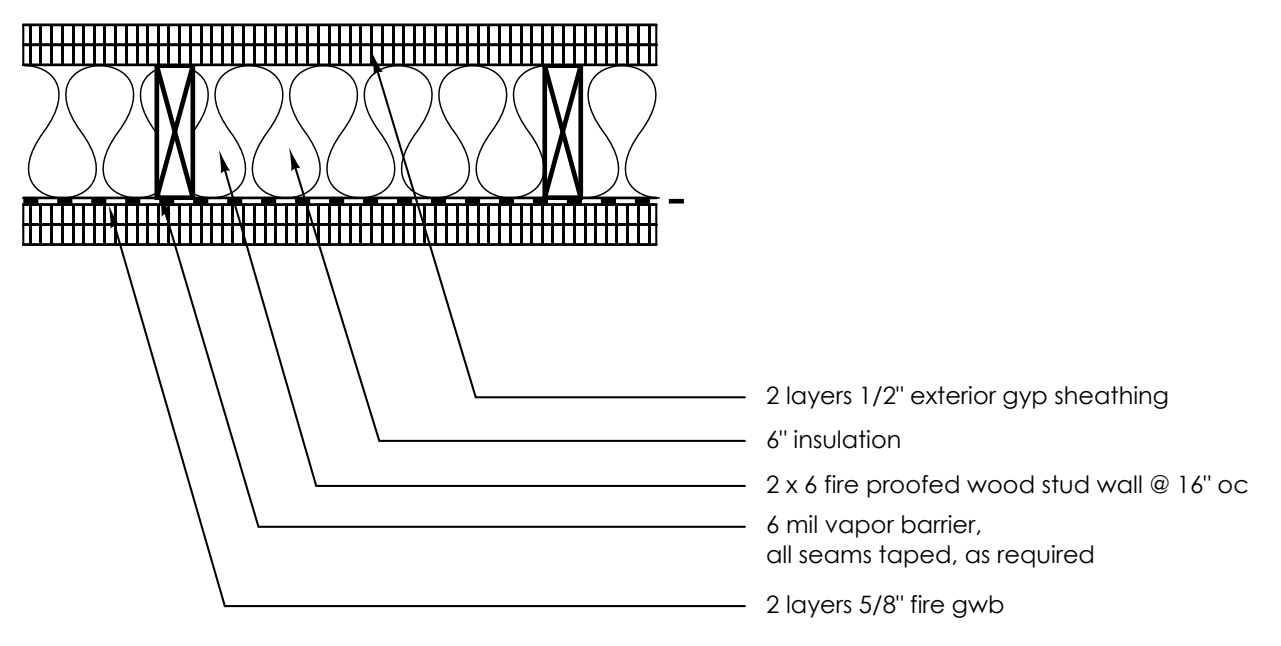
f2 1 HOUR RATED CEILING ASSEMBLY
UL L501 STC: APPROX. 50
5/8"(12.7mm)Fire-Shield C Gypsum Wallboard attached resilient channels 16" oc over existing floor joists



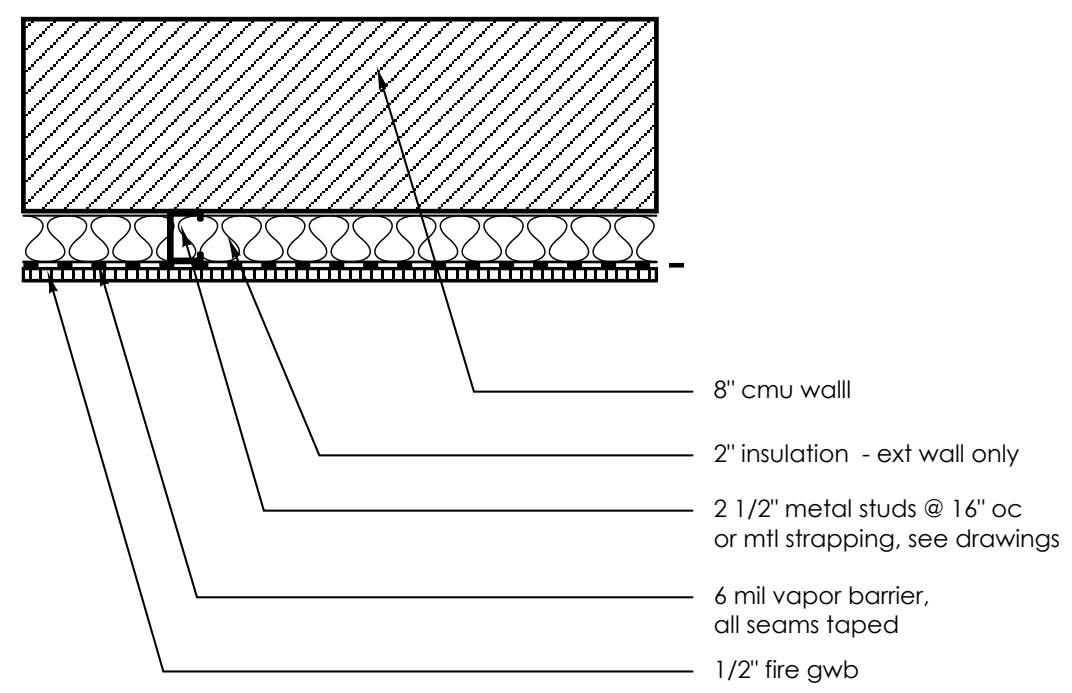
f3 1 HOUR RATED INFILL (Nonbearing)
UL 496



f2.1 2 HOUR RATED METAL PARTITION
(6", 3 5/8", 2 1/2" mtl. studs, see drawings)
FIRE TEST : DESIGN U412
STC : 53
SOUND TEST : NGC 2385



f2.2 2 HOUR RATED LOAD BEARING WALL
FIRE TEST : DESIGN U349 similar



f2.3 2 HOUR RATED LOAD BEARING WALL
FIRE TEST : DESIGN U914 similar

DOOR A	
thickness	1 3/4"
material	solid core birch veneer
finish	clear
rating	1 hour
threshold	as per floor finish
frame	steel/rated

See Specifications for hardware, frames and doors.

DOOR SCHEDULE:

Basement

Door #	Size	Hardware
003	3'-0"/ 6'-8"	HW 8

First Level

Door #	Size	Hardware
103	3'-0"/ 6'-8"	HW 6

Second Level

Door #	Size	Hardware
200	3'-0"/ 6'-8"	HW 6 stair
201	3'-0"/ 6'-8"	HW 8 entry apt 201
202	3'-0"/ 6'-8"	HW 8 entry apt 202
202.1	2'-6"/ 6'-8"	HW 5 wc
203	3'-0"/ 6'-8"	HW 8 entry apt 203
204	3'-0"/ 6'-8"	HW 8 entry apt 204
204.1	2'-8"/ 6'-8"	HW 11 bedroom
204.2	2'-6"/ 6'-8"	HW 5 wc
207	3'-0"/ 6'-8"	HW 6 stair

Third Level

Door #	Size	Hardware
300	3'-0"/ 6'-8"	HW 6 stair
301	3'-0"/ 6'-8"	HW 8 entry apt 301
302	3'-0"/ 6'-8"	HW 8 entry apt 302
302.1	2'-6"/ 6'-8"	HW 5 wc
303	3'-0"/ 6'-8"	HW 8 entry apt 303
304	3'-0"/ 6'-8"	HW 8 entry apt 304
307	3'-0"/ 6'-8"	HW 6 stair

Fourth Level

Door #	Size	Hardware
400	3'-0"/ 6'-8"	HW 6 stair
401	3'-0"/ 6'-8"	HW 8 entry apt 401
402	3'-0"/ 6'-8"	HW 8 entry apt 402
403	3'-0"/ 6'-8"	HW 8 entry apt 403
404	3'-0"/ 6'-8"	HW 8 entry apt 404
407	3'-0"/ 6'-8"	HW 6 stair
408	3'-0"/ 6'-8"	HW 6 stair

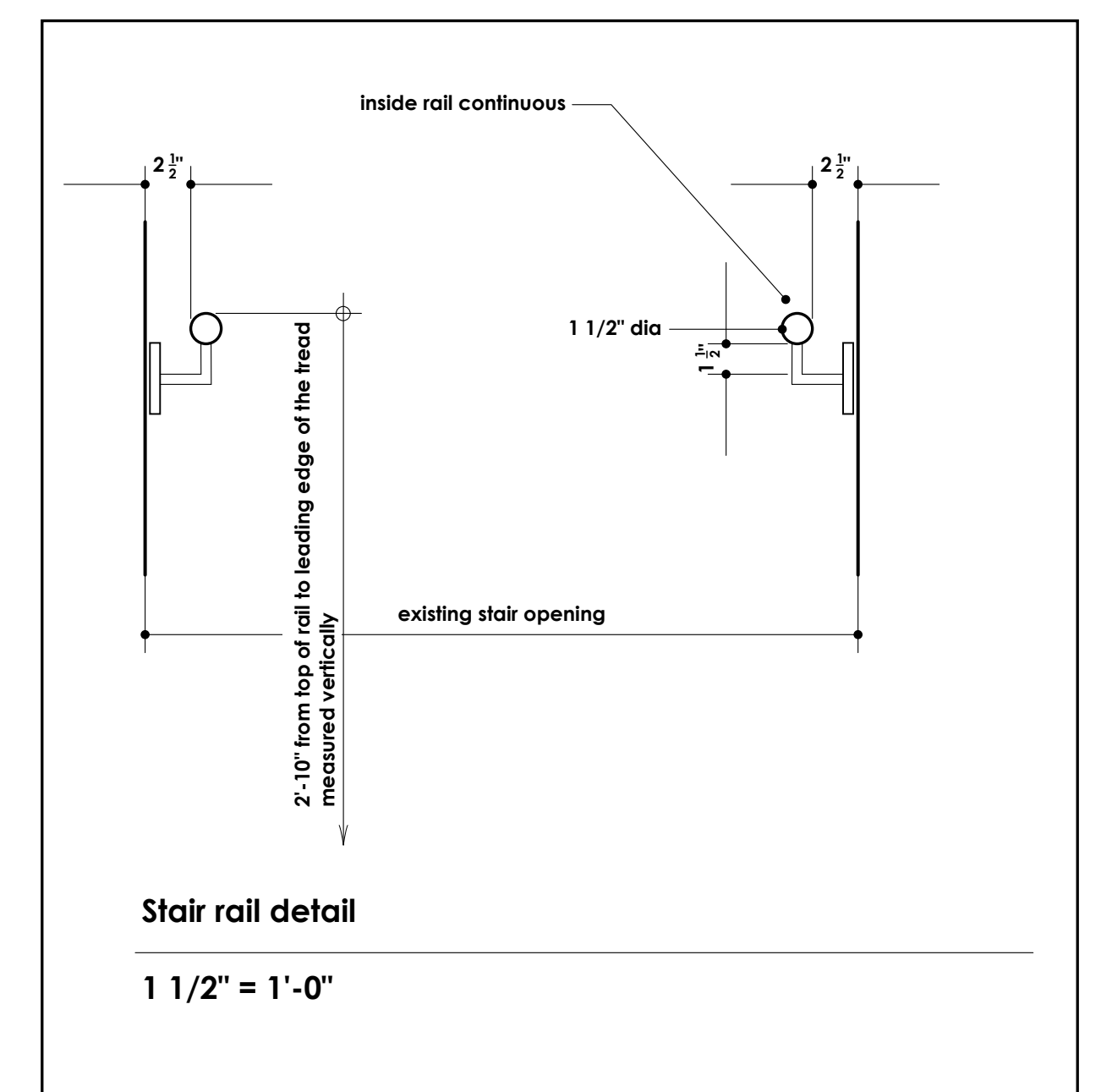
James Sterling AIA
Architect
142 High Street
Portland, Maine

SHWARTZ BUILDING
RENOVATIONS
WALL AND CEILING
TYPES - RATED/UNRATED

DOOR SCHEDULE

A-6.0

10 February 2010
revision:
19 April 2010
22 October 2010



Stair rail detail
1 1/2" = 1'-0"