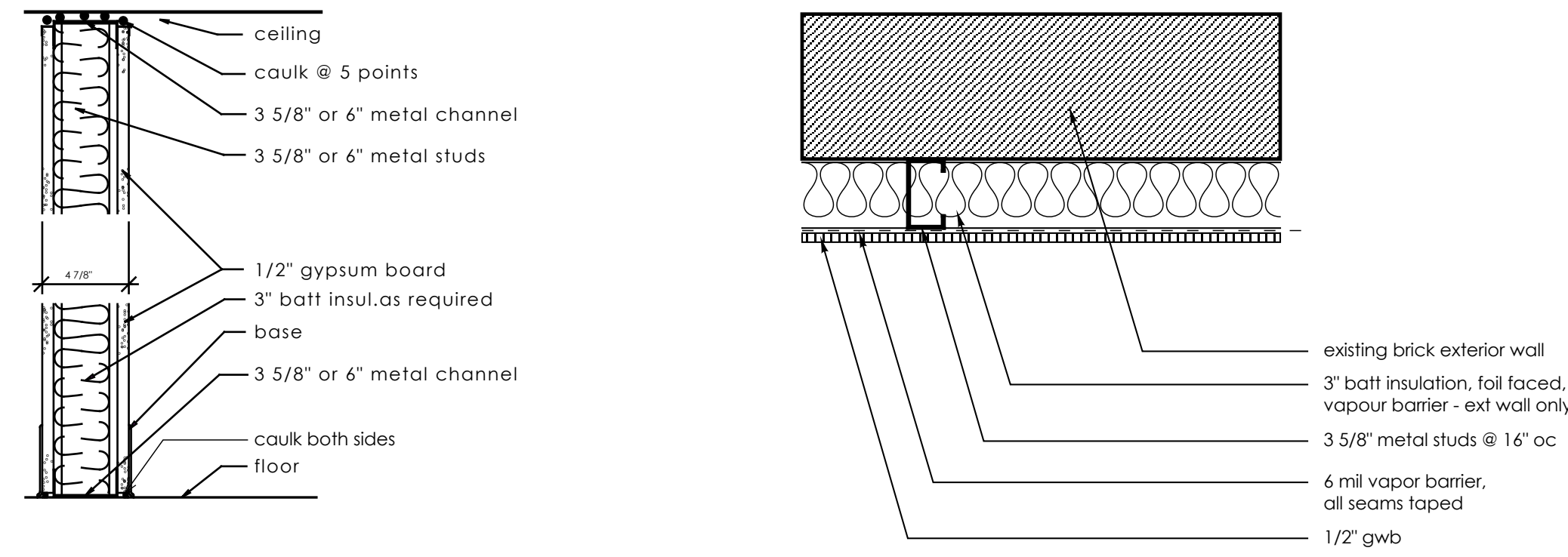
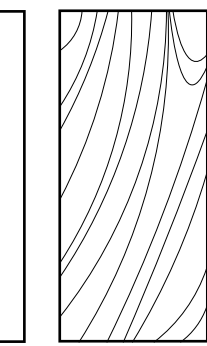


<b>DOOR A</b>	
thickness	1 3/4"
material	solid core birch veneer
finish	clear
rating	1 hour
threshold	as per floor finish



**1** INTERIOR PARTITION  
NOT RATED

**2** MASONRY WALL

**DOOR SCHEDULE:**

**Basement**

Door #	Size	Hardware
003	3'-0" / 6'-8"	HW 8

**First Level**

Door #	Size	Hardware
103	3'-0" / 6'-8"	HW 6

**Second Level**

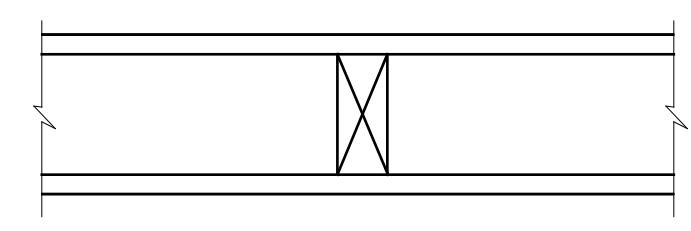
Door #	Size	Hardware
200	3'-0" / 6'-8"	HW 6 stair
201	3'-0" / 6'-8"	HW 8 entry apt 201
202	3'-0" / 6'-8"	HW 8 entry apt 202
202.1	2'-6" / 6'-8"	HW 5 wc
203	3'-0" / 6'-8"	HW 8 entry apt 203
204	3'-0" / 6'-8"	HW 8 entry apt 204
204.1	2'-8" / 6'-8"	HW 11 bedroom
204.2	2'-6" / 6'-8"	HW 5 wc
207	3'-0" / 6'-8"	HW 6 stair

**Third Level**

Door #	Size	Hardware
300	3'-0" / 6'-8"	HW 6 stair
301	3'-0" / 6'-8"	HW 8 entry apt 301
302	3'-0" / 6'-8"	HW 8 entry apt 302
302.1	2'-6" / 6'-8"	HW 5 wc
303	3'-0" / 6'-8"	HW 8 entry apt 303
304	3'-0" / 6'-8"	HW 8 entry apt 304
307	3'-0" / 6'-8"	HW 6 stair

**Fourth Level**

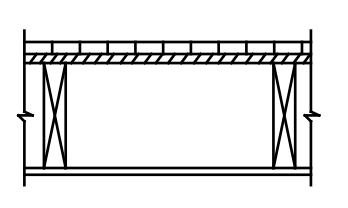
Door #	Size	Hardware
400	3'-0" / 6'-8"	HW 6 stair
401	3'-0" / 6'-8"	HW 8 entry apt 401
402	3'-0" / 6'-8"	HW 8 entry apt 402
403	3'-0" / 6'-8"	HW 8 entry apt 403
404	3'-0" / 6'-8"	HW 8 entry apt 404
407	3'-0" / 6'-8"	HW 6 stair



**f1** 1 HOUR RATED WOOD PARTITION

UL U309 5/8" (15.9mm) Fire-Shield Gypsum Wallboard or 5/8" (15.9mm) Fire-Shield MR Board nailed both sides

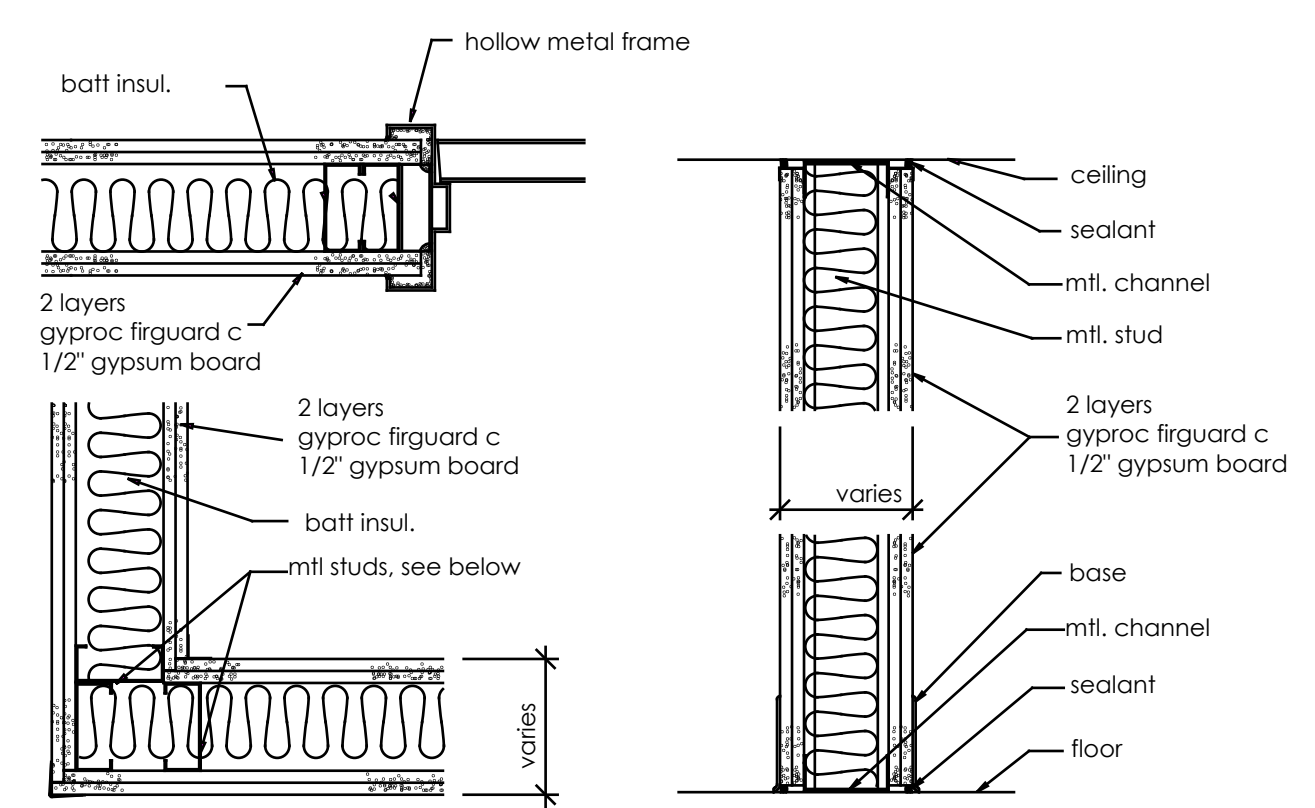
GA WP 3510 2x4 (38 mm x 89 mm) studs, 24" o.c. (610 mm).



**f2** 1 HOUR RATED CEILING ASSEMBLY

UL L522 1/2" (12.7mm) Fire-Shield C Gypsum Wallboard nail attached to 2 x 10 (38mm x 241mm) wood joists spaced 16" o.c. (406mm). UL design L522 permits option of floor topping over plywood.

GA FC 5410



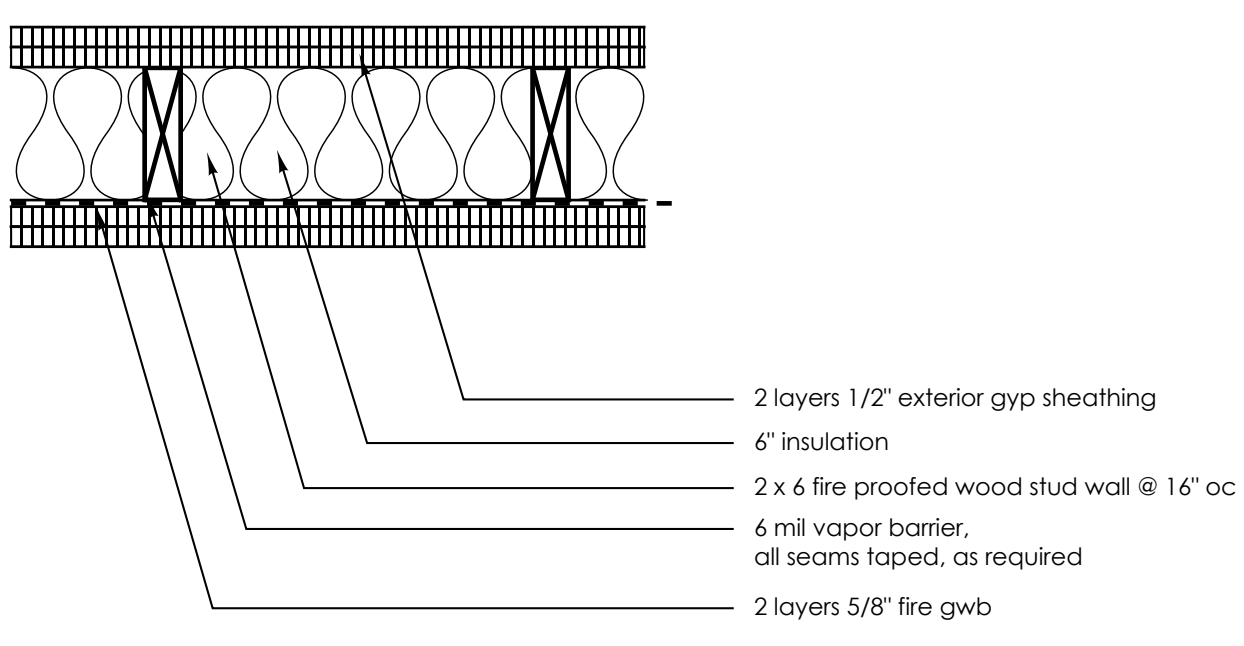
**f2.1** 2 HOUR RATED METAL PARTITION

(6", 3 5/8", 2 1/2" mtl. studs, see drawings)

FIRE TEST : DESIGN U412

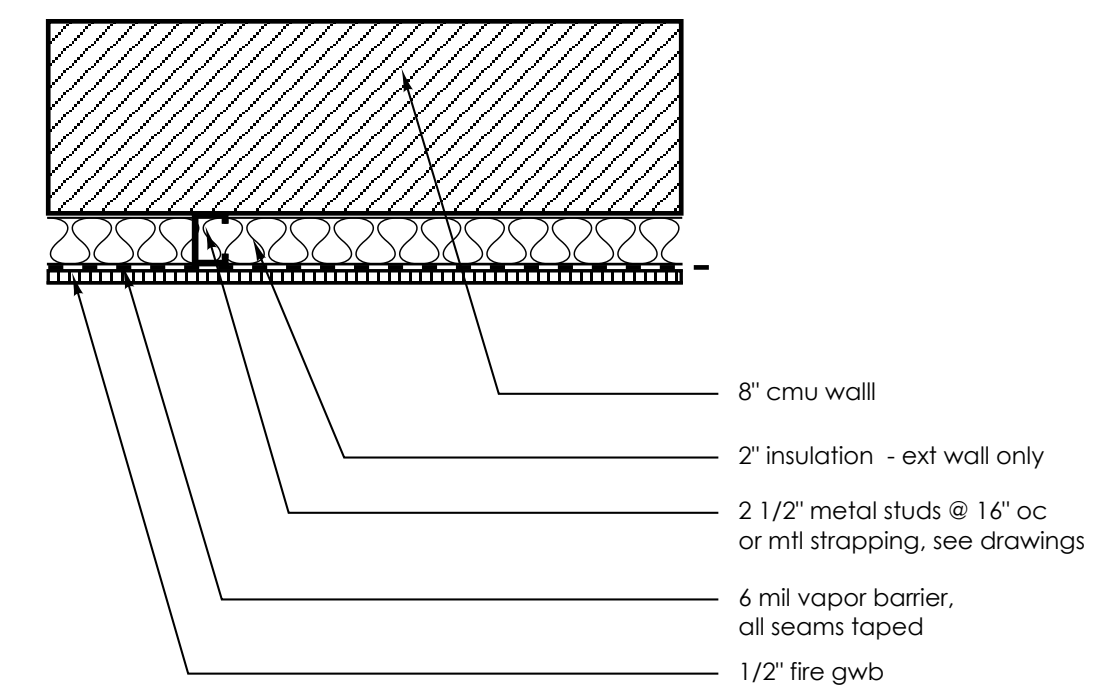
STC : 53

SOUND TEST : NGC 2385



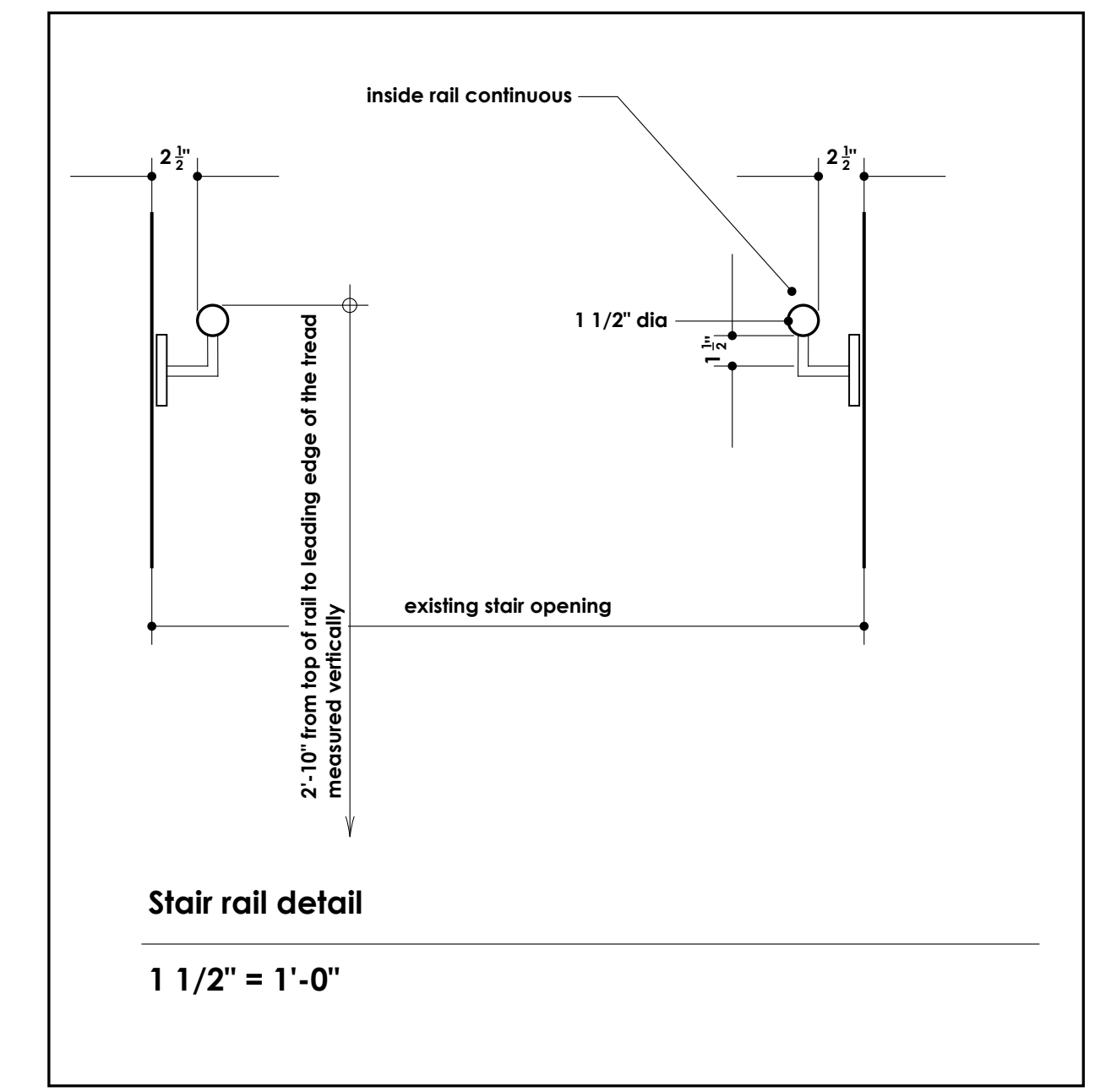
**f2.2** 2 HOUR RATED LOAD BEARING WALL

FIRE TEST : DESIGN U349 similar



**f2.3** 2 HOUR RATED LOAD BEARING WALL

FIRE TEST : DESIGN U914 similar



James Sterling AIA  
Architect  
142 High Street  
Portland, Maine

SHWARTZ BUILDING  
RENOVATIONS

WALL AND CEILING  
TYPES - RATED/UNRATED

DOOR SCHEDULE

**A-5.0**