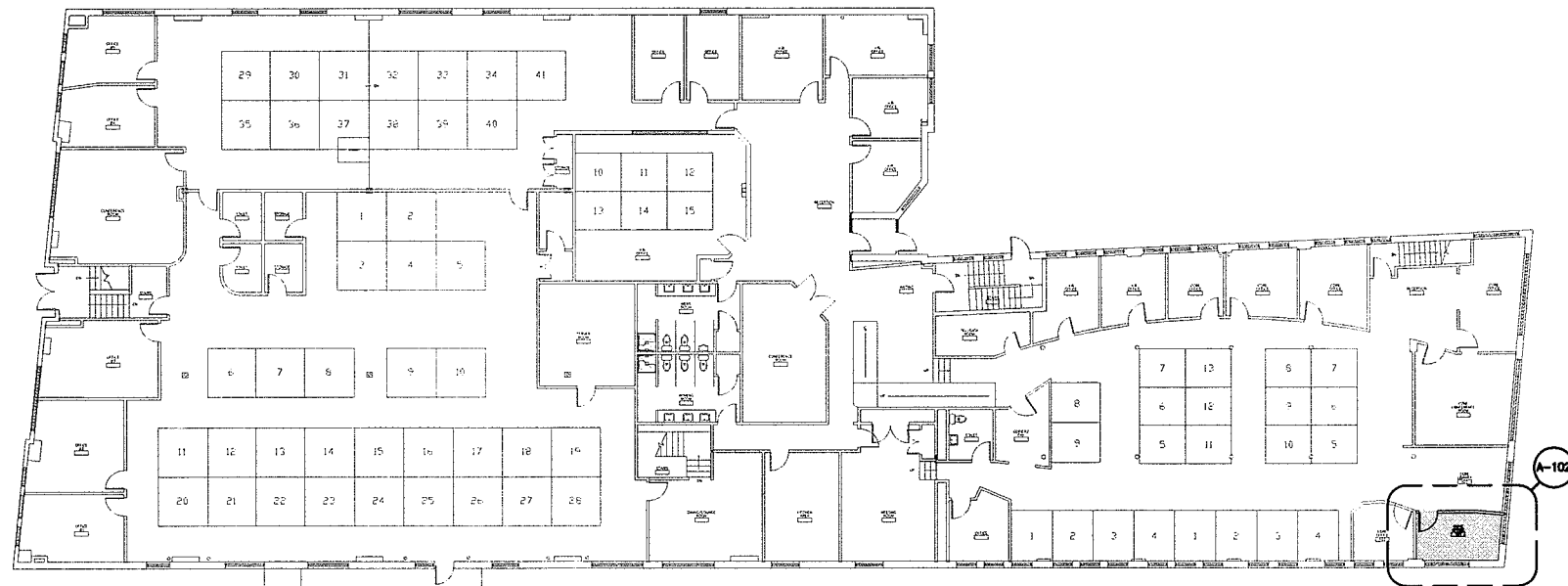


39 Forest Ave

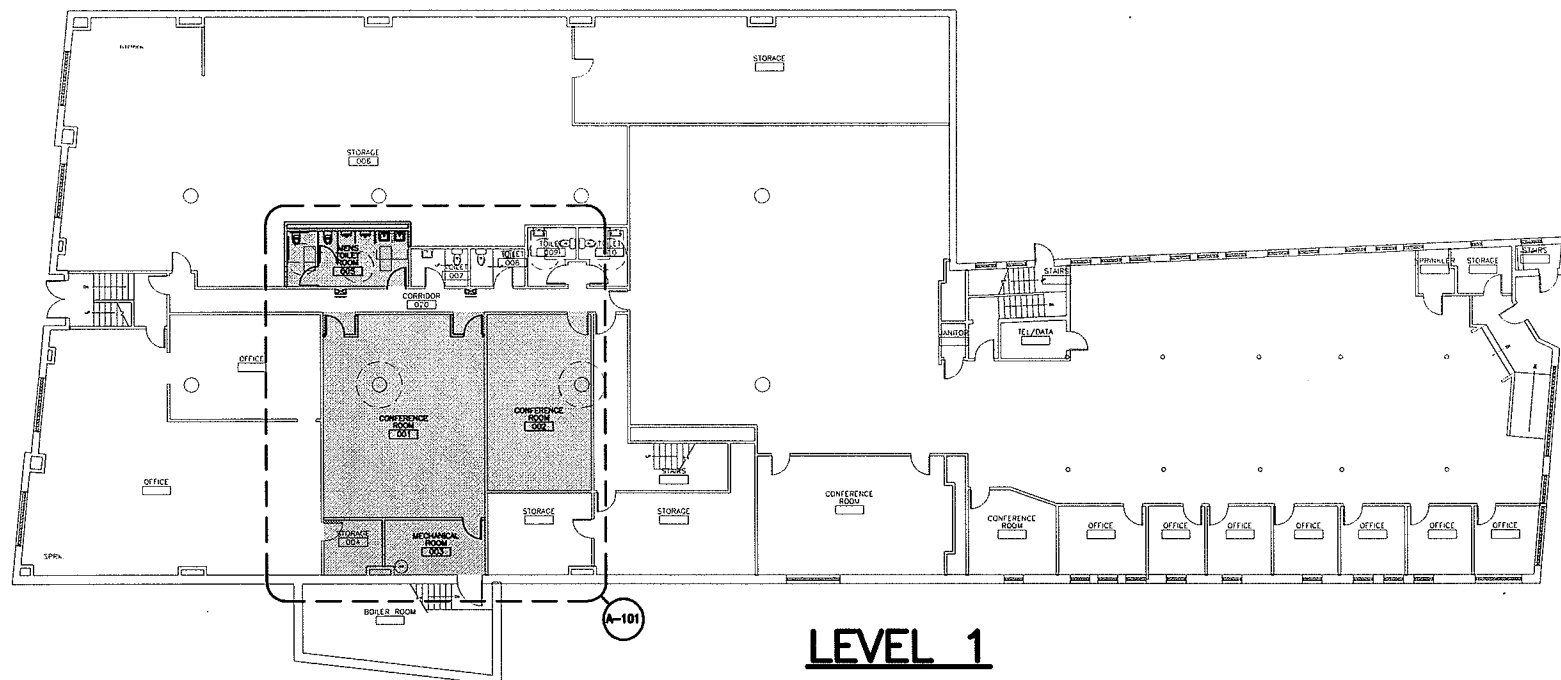
Conference/Toilet room - Level 1, Office - Level 2

Renovations

Portland, Maine



LEVEL 2



LEVEL 1

DRAWING LIST

- G-001 TITLE SHEET
- G-002 PARTIAL SECOND FLOOR LIFE SAFETY PLAN
- G-003 PARTITION LEGEND

- AD101 DEMOLITION PLAN
- AD102 DEMOLITION PLAN

- A-101 PARTIAL FLOOR PLAN LEVEL 1
- A-102 PARTIAL FLOOR PLAN LEVEL 2

- A-111 PARTIAL REFLECTED CEILING PLAN LEVEL 1
- A-112 PARTIAL REFLECTED CEILING PLAN LEVEL 2

144 Fore Street/P.O. Box 618
 Portland, Maine 04104
 tel. (207) 772-3846
 fax. (207) 772-1070
 www.smrinc.com

ARCHITECTURE
 ENGINEERING
 PLANNING
 INTERIOR DESIGN
 COMMISSIONING

SMART

PROJECT NORTH

39 FOREST AVE
 CONF./TOILET ROOM RENO
 Portland, Maine

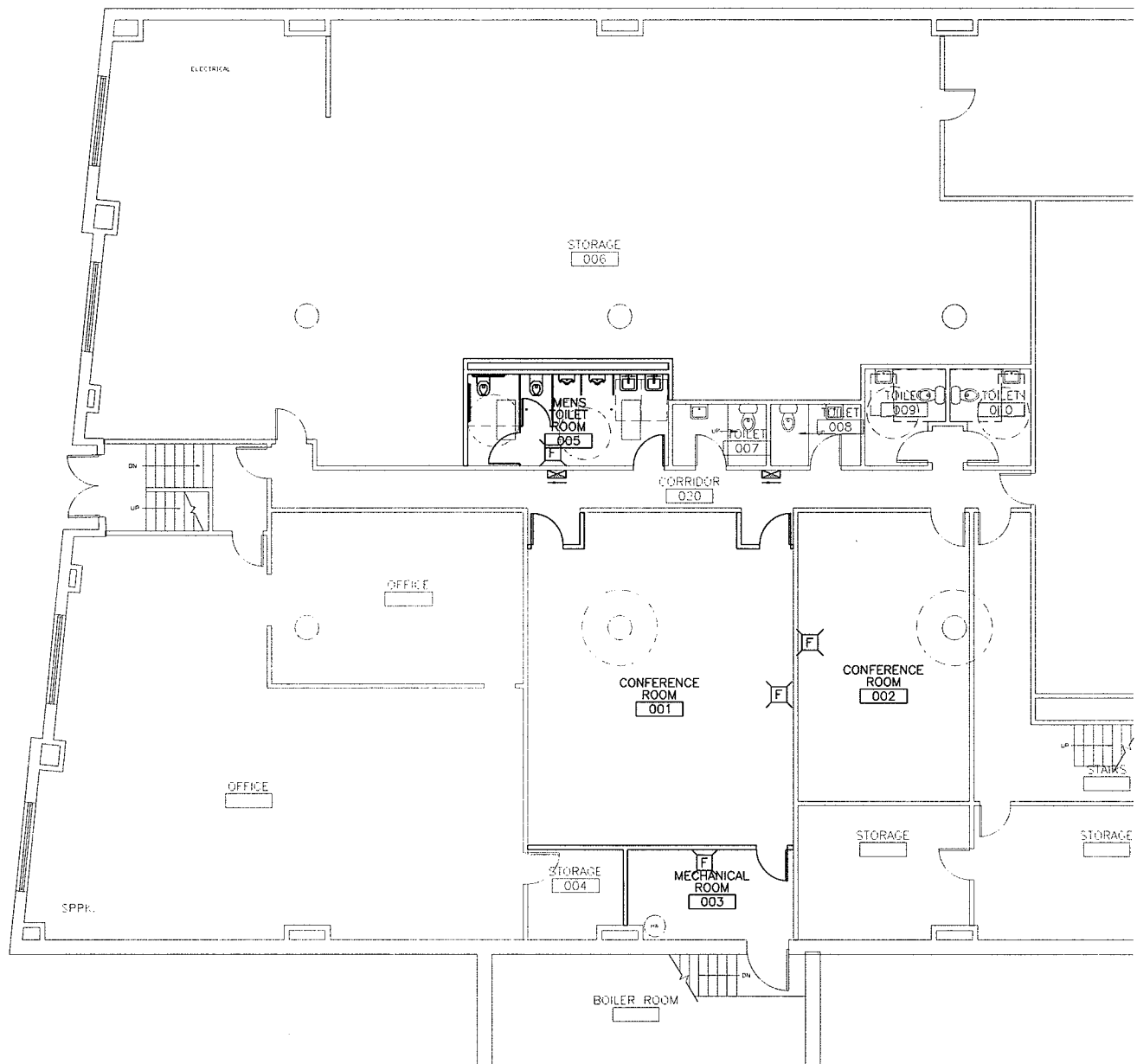
PROGRESS PRINT
 2-7-11

CURRENT ISSUE STATUS:

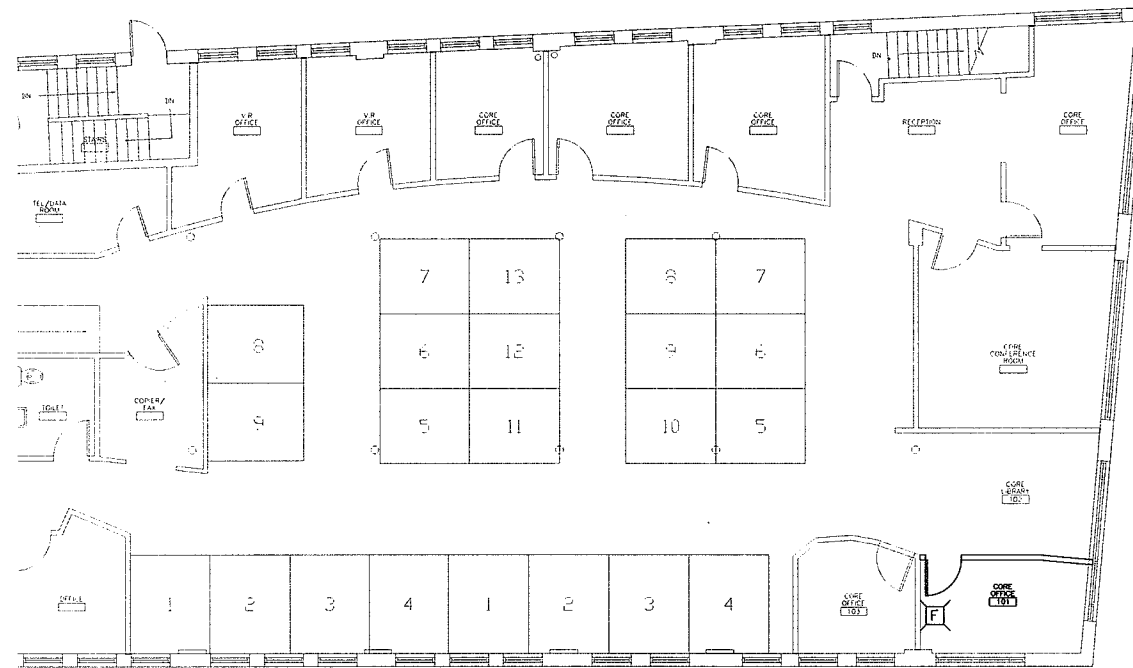
REV	DESCRIPTION	DATE

SCALE:	N.T.S.
PROJECT MANAGER:	DJV
JC/DRAWN BY:	MDR
A/E OF RECORD:	
CAD FILE:	A-101-11009
PROJECT NO:	11009
DATE:	
SHEET TITLE:	COVER SHEET

SHEET No. **G-001**
 © COPYRIGHT 2009 SMRT INC.



PARTIAL LEVEL 1



PARTIAL LEVEL 2

NOTES

1. BUILDING IS FULLY SPRINKLED.
2. EGRESS LIGHTING SHALL BE PROVIDED IN ALL CORRIDORS AND PASSAGeways LEADING TO EXITS. A MINIMUM AVERAGE OF 1 FOOT-CANDLE IS TO BE PROVIDED. THE SOURCE OF ILLUMINATION SHALL BE PROVIDED FOR 90 MINUTES AND CAN BE ANY OF THE FOLLOWING:
 - a. BATTERY BALLAST LIGHT FIXTURES
 - b. INDIVIDUAL BATTERY UNIT WITH UNIT MONITOR OR REMOTE LAMPS.

SYMBOL LEGEND

- EXIT SIGN, ARROWS INDICATE EGRESS DIRECTION, SHADING INDICATES SIGN FACE
- FIRE ALARM AUDIBLE/VISUAL NOTIFICATION APPLIANCE. NUMBER IN PARENTHESES INDICATES ILLUMINATION IN CANDELA
- FIRE ALARM VISIBLE-ONLY NOTIFICATION APPLIANCE

144 Fore Street/P.O. Box 618
 Portland, Maine 04104
 tel. (207) 772-3846
 fax. (207) 772-1070
 www.smrtinc.com

ARCHITECTURE
 ENGINEERING
 PLANNING
 INTERIOR DESIGN
 COMMISSIONING

SMRT

PROJECT NORTH
 39 FOREST AVE
 CONF./TOILET ROOM RENO
 Portland, Maine

PROGRESS PRINT
 2-7-11

CURRENT ISSUE STATUS:

REV	DESCRIPTION	DATE

SCALE: 1/16"=1'-0"

PROJECT MANAGER: DJV

JC/DRAWN BY: MDR

A/E OF RECORD:

CAD FILE: G-002-11009

PROJECT NO: 11009

DATE:

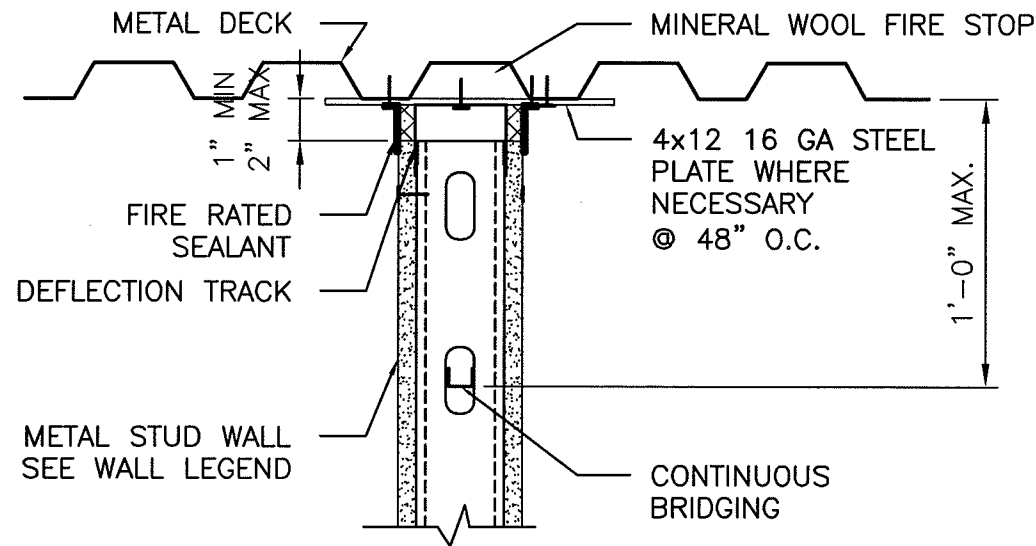
SHEET TITLE:

LIFE SAFETY PLANS

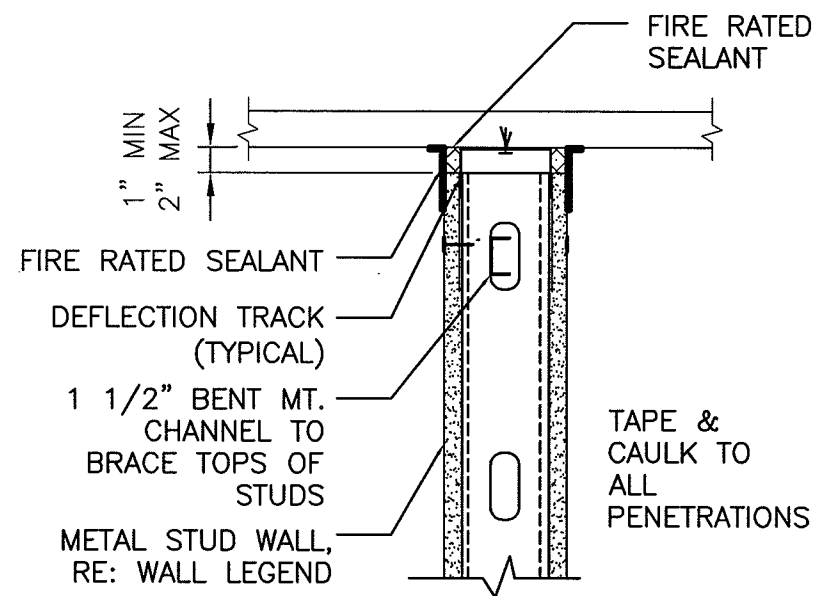
SHEET No.

G-002

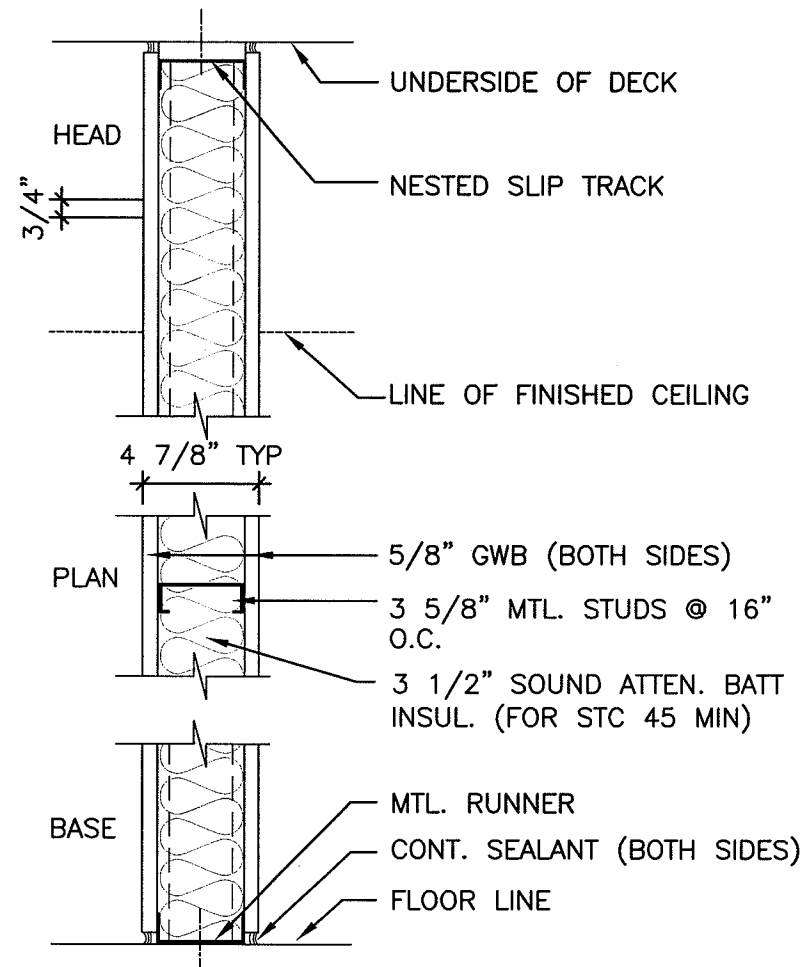
© COPYRIGHT 2009 SMRT INC.



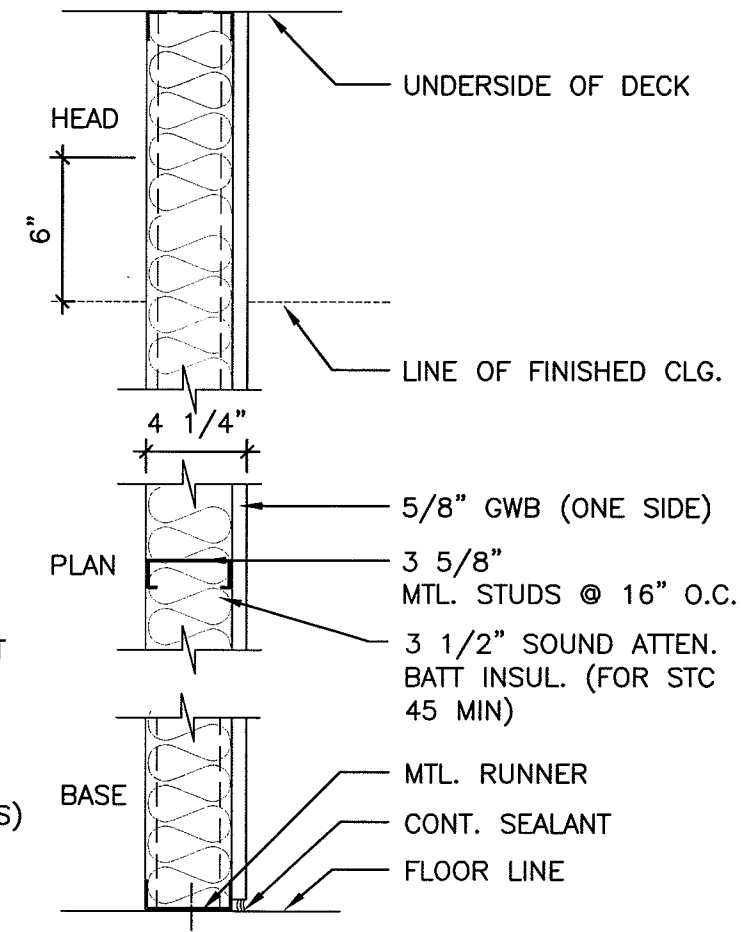
UL RATED FIRE ASSEMBLY : #HW-D-0087



TYPICAL TOP OF RATED WALL DETAILS



- 1 CONSTRUCT AS SHOWN
*TYPICAL PARTITION U.N.O.
- 1a CONSTRUCT AS SHOWN 1 HOUR
FIRE-RESISTANCE RATING U.L.
DESIGN NO. U465, 5/8" TYPE "X"
GWB
- 1b CONSTRUCT AS SHOWN TO A HEIGHT
OF 9'-6".



- 2 CONSTRUCT AS SHOWN

PARTITIONS

144 Fore Street/P.O. Box 618
Portland, Maine 04104
tel. (207) 772-3846
fax. (207) 772-1070
www.smrinc.com

ARCHITECTURE
ENGINEERING
PLANNING
INTERIOR DESIGN
COMMISSIONING

SMRT

39 FOREST AVE
CONF./TOILET ROOM RENO
Portland, Maine



PROGRESS PRINT

2-7-11

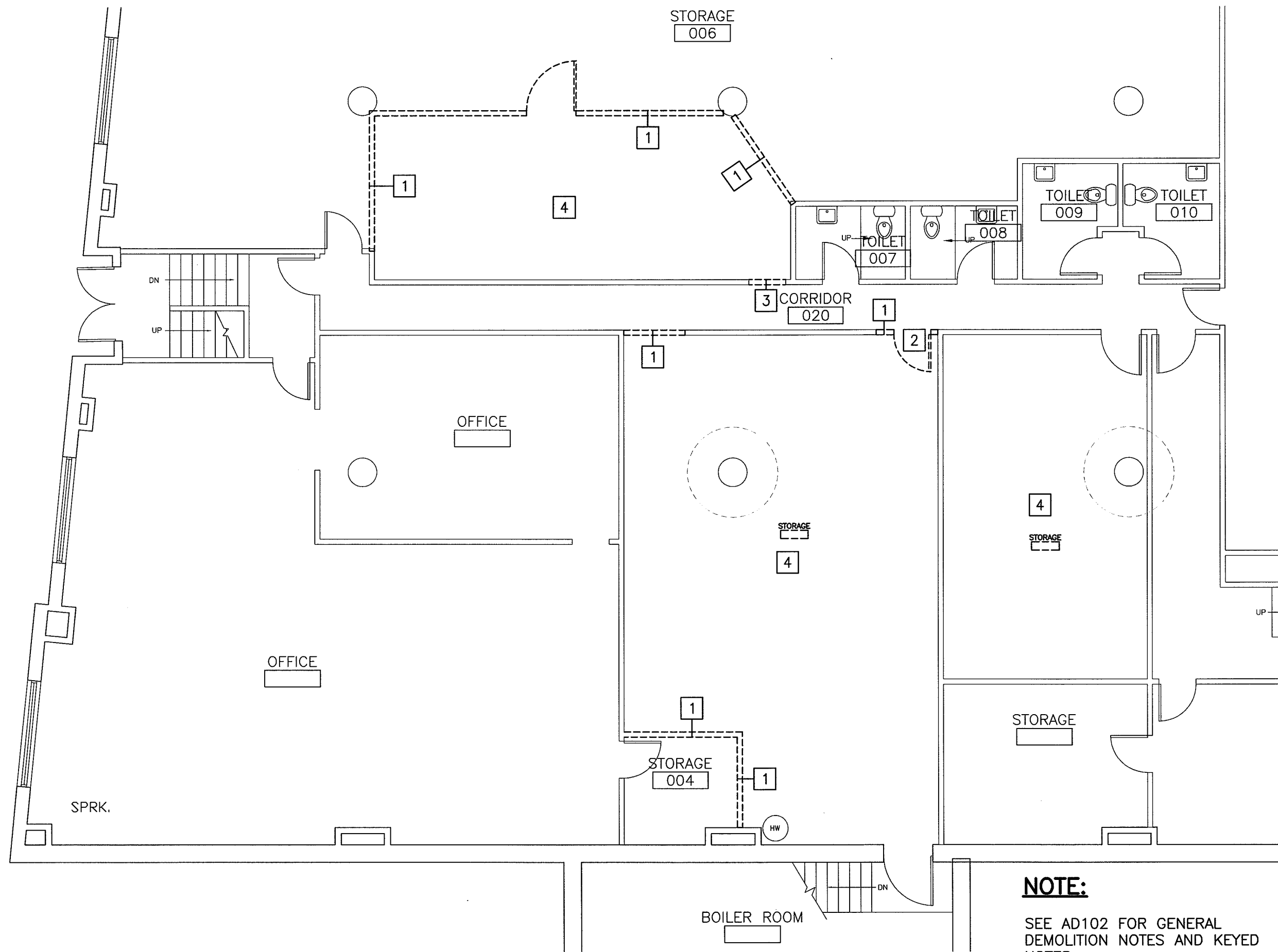
CURRENT ISSUE STATUS:

REV	DESCRIPTION	DATE

SCALE: 1/8"=1'-0"
PROJECT MANAGER: DJV
JC/DRAWN BY: MDR
A/E OF RECORD:
CAD FILE: G-003-11009
PROJECT NO: 11009
DATE:

SHEET TITLE:
PARTITION LEGEND

SHEET No. **G-003**
© COPYRIGHT 2009 SMRT INC.



NOTE:

SEE AD102 FOR GENERAL DEMOLITION NOTES AND KEYED NOTES.

144 Fore Street/P.O. Box 618
 Portland, Maine 04104
 tel. (207) 772-3846
 fax. (207) 772-1070
 www.smrftinc.com

ARCHITECTURE
 ENGINEERING
 PLANNING
 INTERIOR DESIGN
 COMMISSIONING

PROJECT NORTH
 39 FOREST AVE
 CONF./TOILET ROOM RENO
 Portland, Maine

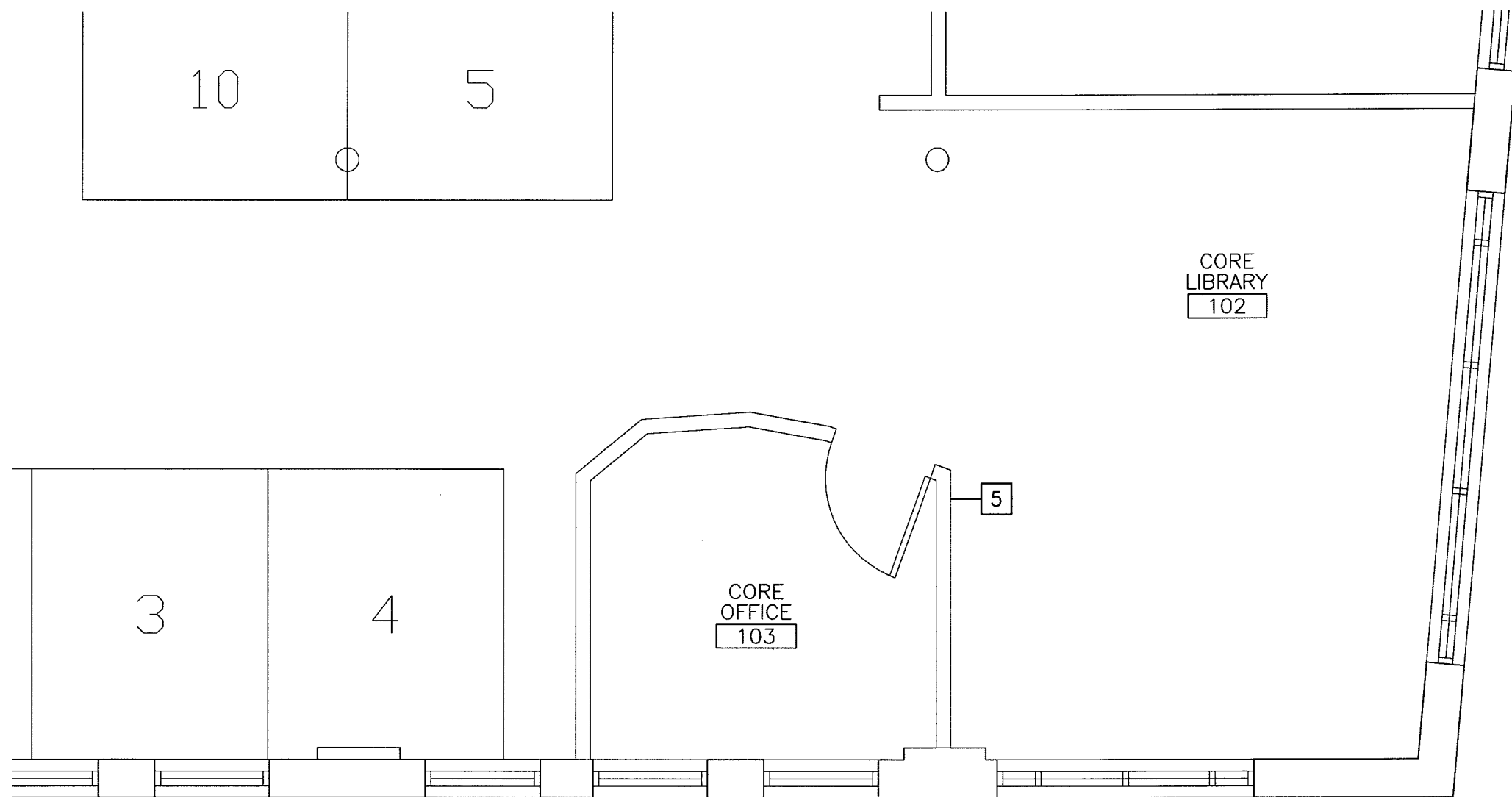
PROGRESS PRINT
 2-7-11
 CURRENT ISSUE STATUS:

REV	DESCRIPTION	DATE

SCALE: 1/8"=1'-0"
 PROJECT MANAGER: DJV
 JC/DRAWN BY: MDR
 A/E OF RECORD:
 CAD FILE: AD101-11009
 PROJECT NO: 11009
 DATE:

SHEET TITLE:
**PARTIAL DEMOLITION
 FLOOR PLAN LEVEL 1**

SHEET No. **AD101**
 © COPYRIGHT 2009 SMRT INC.



GENERAL DEMOLITION NOTES

1. COORDINATE EXTENT OF DEMOLITION WITH LOCATIONS OF PARTITIONS DESCRIBED ON PLANS AND WITH LOCATIONS OF FINISHES NOTED AS EXISTING TO REMAIN.
2. ANY WALL, PARTITION OR SURFACE DISTURBED BECAUSE OF NEW WORK OR DEMOLITION SHALL BE PATCHED AND FINISHED CONTINUOUSLY TO THE NEAREST CORNER UNLESS NOTED OTHERWISE, MATCH EXISTING ADJACENT CONSTRUCTION FINISHES, CONTINUITY AND FIRE RATINGS UNLESS NOTED OTHERWISE.
3. PROTECT ALL FINISHES, MATERIALS AND EQUIPMENT NOTED AS EXISTING TO REMAIN. CONTRACTOR SHALL BE RESPONSIBLE TO REPLACE ALL FINISHES, MATERIALS AND EQUIPMENT DAMAGED DURING CONSTRUCTION.

DEMOLITION PLAN KEY NOTES

- 1 REMOVE PARTITION. PATCH ADJOINING WALL TO MATCH ADJACENT FINISH.
- 2 REMOVE DOOR AND FRAME.
- 3 CUT OPENING FOR NEW DOOR.
- 4 REMOVE ANY EXISTING FLOORING AND PREPARE SURFACE FOR SCHEDULED FLOORING.
- 5 REMOVE AND RELOCATE EXISTING WALL PHONE AND THERMOSTAT

144 Fore Street/P.O. Box 618
 Portland, Maine 04104
 tel. (207) 772-3846
 fax. (207) 772-1070
 www.smrtninc.com

ARCHITECTURE
 ENGINEERING
 PLANNING
 INTERIOR DESIGN
 COMMISSIONING



39 FOREST AVE
 CONF./TOILET ROOM RENO
 Portland, Maine



PROGRESS PRINT

2-7-11

CURRENT ISSUE STATUS:

REV	DESCRIPTION	DATE

SCALE: 1/8"=1'-0"

PROJECT MANAGER: DJV

JC/DRAWN BY: MDR

A/E OF RECORD:

CAD FILE: AD102-11009

PROJECT NO: 11009

DATE:

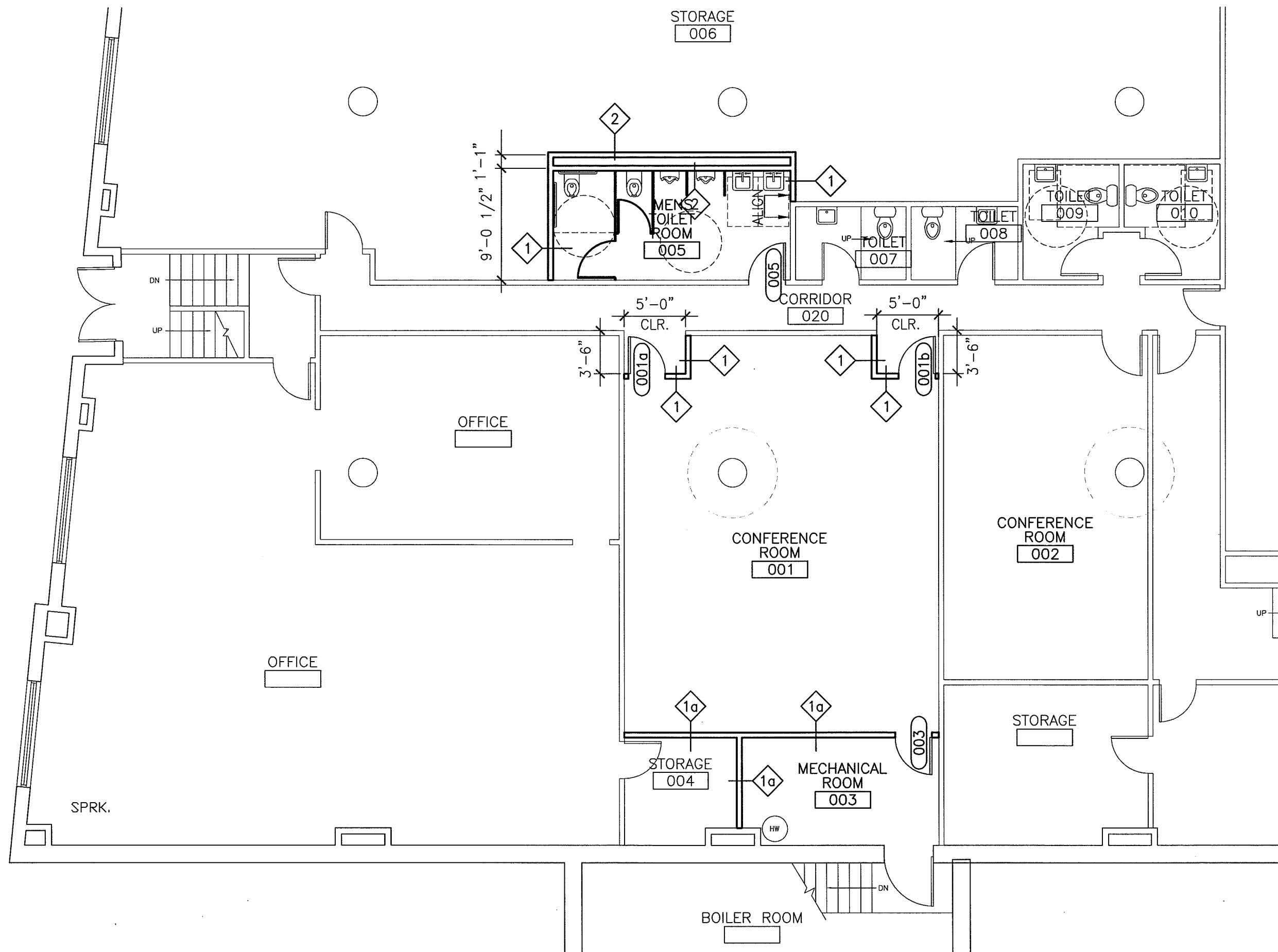
SHEET TITLE:

**PARTIAL DEMOLITION
 FLOOR PLAN LEVEL 2**

SHEET No.

AD102

© COPYRIGHT 2009 SMRT INC.



144 Fore Street/P.O. Box 618
 Portland, Maine 04104
 tel. (207) 772-3846
 fax. (207) 772-1070
 www.smrftinc.com

ARCHITECTURE
 ENGINEERING
 PLANNING
 INTERIOR DESIGN
 COMMISSIONING

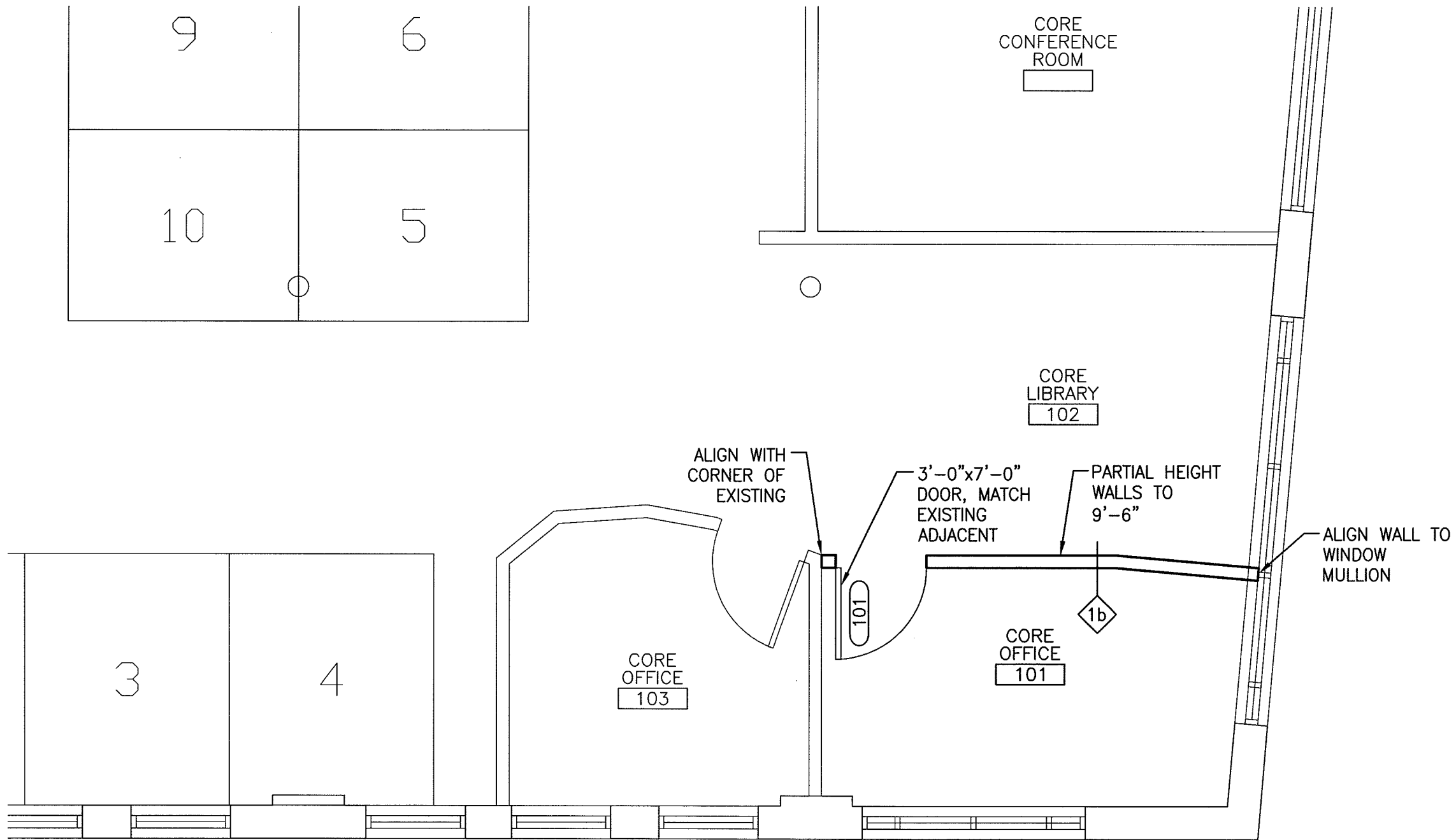
PROJECT NORTH
 39 FOREST AVE
 CONF./TOILET ROOM RENO
 Portland, Maine

PROGRESS PRINT 2-7-11	REV	DATE
CURRENT ISSUE STATUS:	REV	DESCRIPTION

SCALE:	1/8"=1'-0"
PROJECT MANAGER:	DJV
JC/DRAWN BY:	MDR
A/E OF RECORD:	
CAD FILE:	A-101-11009
PROJECT NO:	11009
DATE:	

SHEET TITLE:
**PARTIAL FLOOR PLAN
 LEVEL 1**

SHEET No. **A-101**
 © COPYRIGHT 2009 SMRT INC.



144 Fore Street/P.O. Box 618
 Portland, Maine 04104
 tel. (207) 772-3846
 fax. (207) 772-1070
 www.smrting.com

SMRT
 ARCHITECTURE
 ENGINEERING
 PLANNING
 INTERIOR DESIGN
 COMMISSIONING

PROJECT NORTH
 39 FOREST AVE
 CONF./TOILET ROOM RENO
 Portland, Maine

PROGRESS PRINT
 2-7-11
 CURRENT ISSUE STATUS:

REV	DESCRIPTION	DATE

SCALE: 1/8" = 1'-0"
 PROJECT MANAGER: DJV
 JC/DRAWN BY: MDR
 A/E OF RECORD:
 CAD FILE: A-102-11009
 PROJECT NO: 11009
 DATE:
 SHEET TITLE:
**PARTIAL FLOOR PLAN
 LEVEL 2**
 SHEET No. **A-102**
 © COPYRIGHT 2009 SMRT INC.

ROOM FINISH SCHEDULE

ROOM NUMBER	ROOM NAME	FLOOR	BASE	WALLS				CEILING		ROOM NUMBER	REMARKS
				NORTH	SOUTH	EAST	WEST	MATERIAL	HEIGHT		
001	CONFERENCE ROOM	CARPET	RB	PTD	PTD	PTD	PTD	EXPOSED	.		.
002	CONFERENCE ROOM	CARPET	RB	PTD	PTD	PTD	PTD	EXPOSED			
003	MECHANICAL ROOM	EXISTING						EXPOSED			
004	STORAGE	CARPET	RB	PTD	PTD	PTD	PTD	ACT	8'-0"		
005	MENS TOILET ROOM	VCT	RB	PTD	PTD	PTD	PTD	ACT	8'-0"		
020	CORRIDOR	EXISTING	RB	EXIST	EXIST	EXIST	EXIST	EXPOSED			PTD AS REQUIRED
101	CORE OFFICE	CARPET	RB	PTD	PTD	PTD	PTD	ACT	8'-9"/9'-4"		
102	CORE LIBRARY	EXISTING	RB	EXIST	PTD	EXIST	EXIST	EXIST	EXIST		

DOOR SCHEDULE

DOOR NUMBER	DOOR			GLAZING	FRAME MATERIAL	FIRE RATING (MIN.)	REMARKS
	SIZE	MATERIAL	ELEVATION				
001a	3'-0"x7'-0"	WOOD	FLUSH	.	HM		.
001b	3'-0"x7'-0"	WOOD	FLUSH	.	HM		
003	3'-0"x7'-0"	WOOD	FLUSH	.	HM	45	
005	3'-0"x7'-0"	WOOD	FLUSH	.	HM		
101	3'-0"x7'-0"	WOOD	FLUSH	.	HM		

144 Fore Street/P.O. Box 618
Portland, Maine 04104
tel. (207) 772-3846
fax. (207) 772-1070
www.smrinc.com

ARCHITECTURE
ENGINEERING
PLANNING
INTERIOR DESIGN
COMMISSIONING

SMART

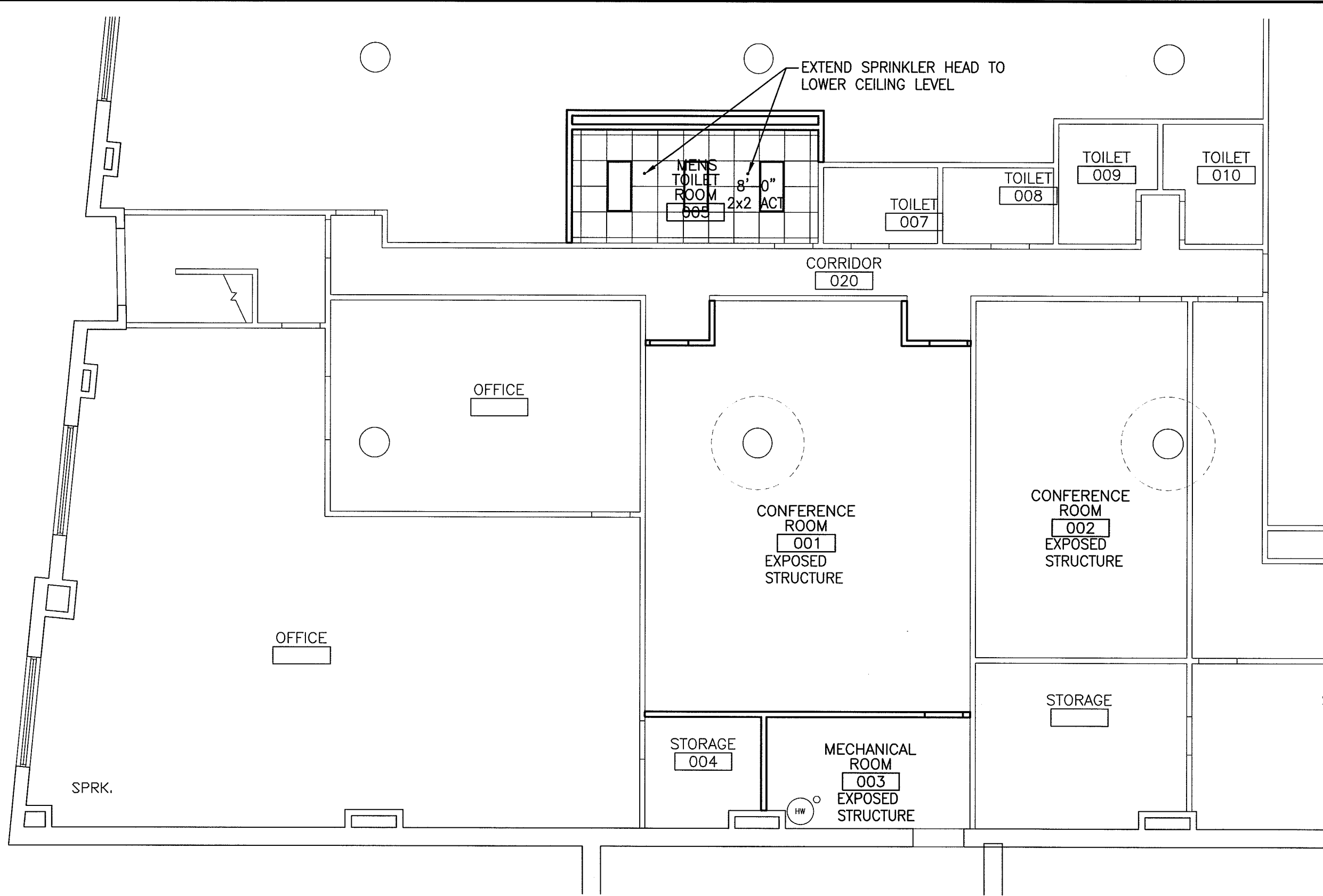
PROJECT NORTH

39 FOREST AVE
CONF./TOILET ROOM RENO
Portland, Maine

PROGRESS PRINT 2-7-11 CURRENT ISSUE STATUS:	DATE DESCRIPTION REV
---	----------------------------

SCALE:
PROJECT MANAGER: DJV
JC/DRAWN BY: MDR
A/E OF RECORD:
CAD FILE: A-103-11009
PROJECT NO: 11009
DATE:
SHEET TITLE:
SCHEDULES

SHEET No. **A-103**
© COPYRIGHT 2009 SMART INC.



REFLECTED CEILING PLAN NOTES

1. EXTEND SPRINKLER TO NEW CEILING HEIGHT.
2. CENTER SPRINKLER HEAD IN CENTER OF TILE, WHERE POSSIBLE.

144 Fore Street/P.O. Box 618
 Portland, Maine 04104
 tel. (207) 772-3846
 fax. (207) 772-1070
 www.smrftinc.com

ARCHITECTURE
 ENGINEERING
 PLANNING
 INTERIOR DESIGN
 COMMISSIONING

SMART

39 FOREST AVE
 CONF./TOILET ROOM RENO
 Portland, Maine

PROJECT NORTH

PROGRESS PRINT
 2-7-11

CURRENT ISSUE STATUS:

REV	DESCRIPTION	DATE

SCALE: 1/8"=1'-0"

PROJECT MANAGER: DJV

JC/DRAWN BY: MDR

A/E OF RECORD:

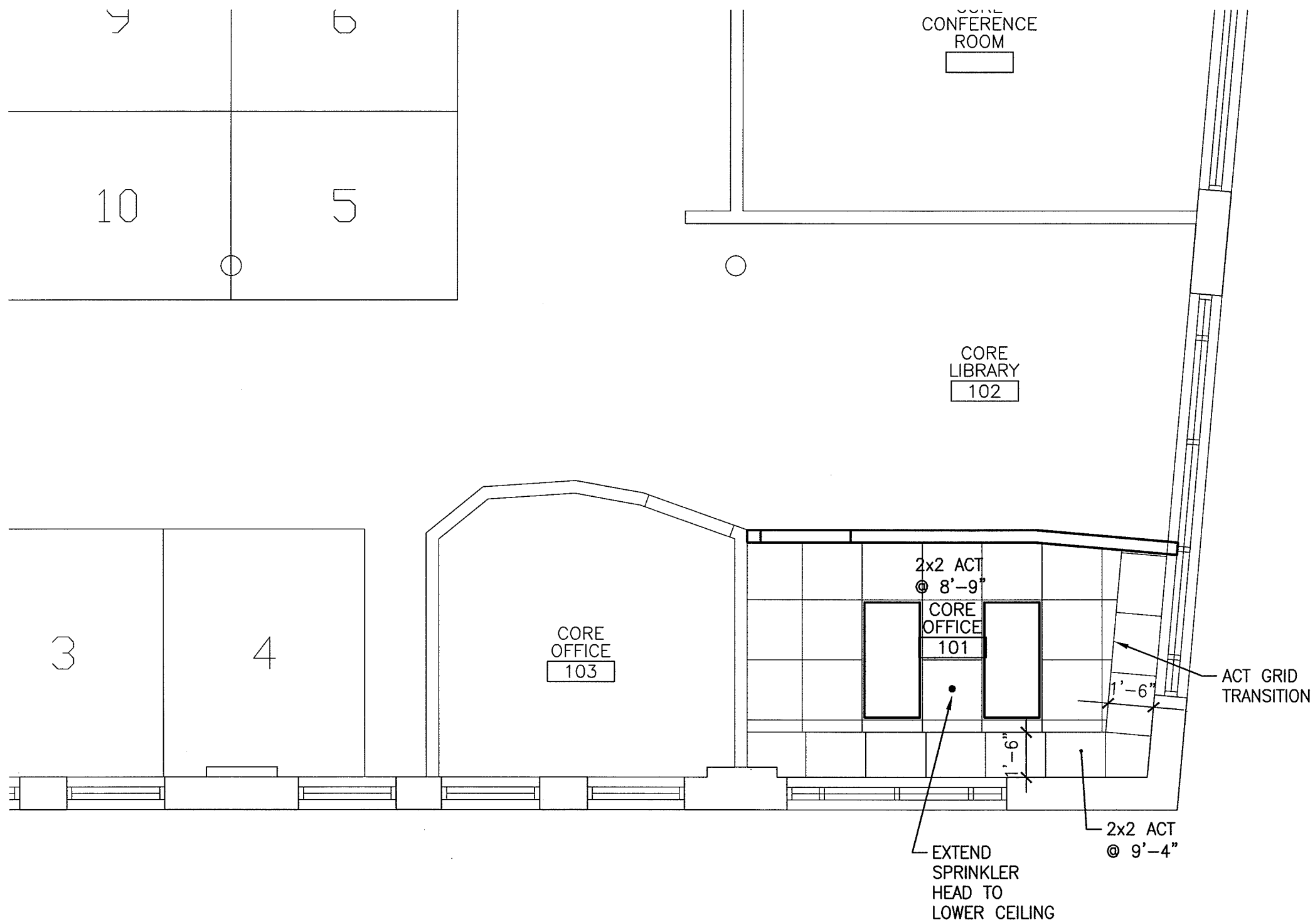
CAD FILE: A-101-07019

PROJECT NO: 11009

DATE:

SHEET TITLE:
**PARTIAL FLOOR PLAN
 LEVEL 1**

SHEET No. **A-111**
 © COPYRIGHT 2009 SMRT INC.



REFLECTED CEILING PLAN NOTES

1. EXTEND SPRINKLER TO NEW CEILING HEIGHT.
2. CENTER SPRINKLER HEAD IN CENTER OF TILE, WHERE POSSIBLE.

ARCHITECTURE
ENGINEERING
PLANNING
INTERIOR DESIGN
COMMISSIONING

SMRT

144 Fore Street/P.O. Box 618
Portland, Maine 04104
tel. (207) 772-3846
fax. (207) 772-1070
www.smrtinc.com

PROJECT NORTH

39 FOREST AVE
CONF./TOILET ROOM RENO
Portland, Maine

PROGRESS PRINT
2-7-11

CURRENT ISSUE STATUS:

REV	DESCRIPTION	DATE

SCALE: 1/4"=1'-0"

PROJECT MANAGER: DJV

JC/DRAWN BY: MDR

A/E OF RECORD:

CAD FILE: A-101-07019

PROJECT NO: 11009

DATE:

SHEET TITLE:
**PARTIAL FLOOR PLAN
LEVEL 2**

SHEET No. **A-112**

© COPYRIGHT 2009 SMRT INC.