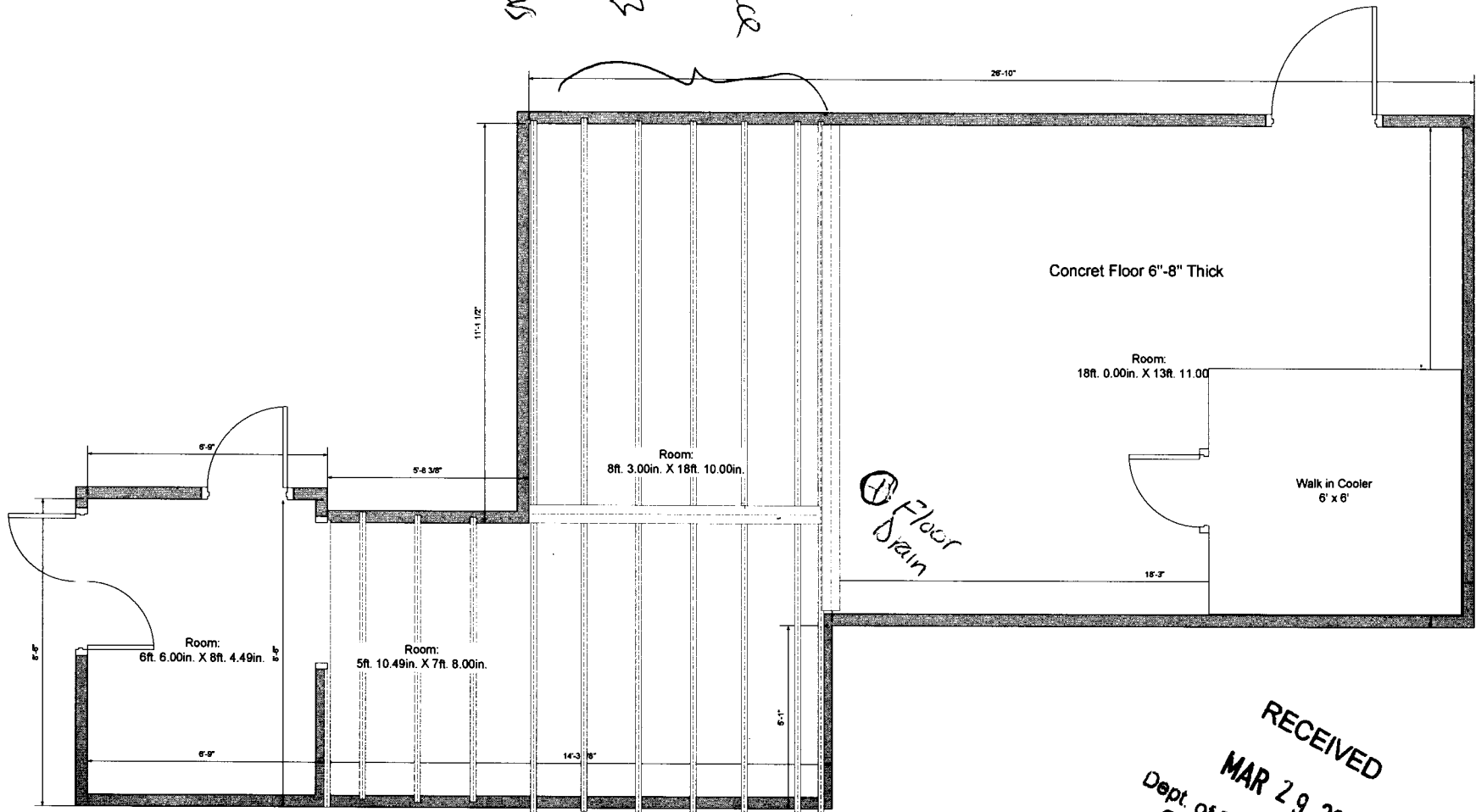


replace
rotted
Joists
w/ hangers

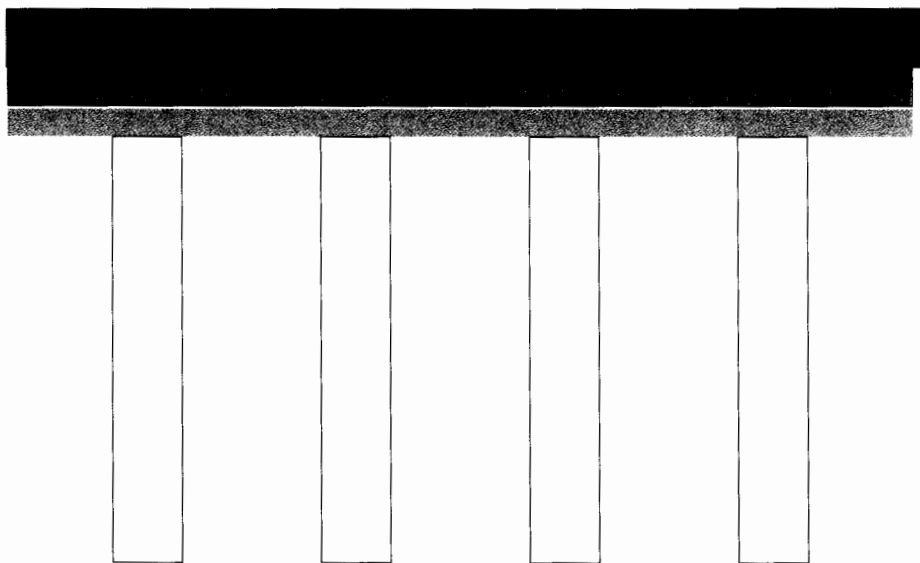


⊕ Floor
Drain

replace
rotted
Joists

RECEIVED
MAR 29 2013
Dept. of Building Inspections
City of Portland Maine

Ceremic Tile 6"Height 12"Length
Ceremic Tile 12"Width 12"Length 1/4" Thick
Backer Board 1/4" Thick
Plywood 3/4" Thick



2" x 10"

- cove base J
Per Bob Wong

RECEIVED
MAR 29 2013
Dept. of Building Inspections
City of Portland Maine