

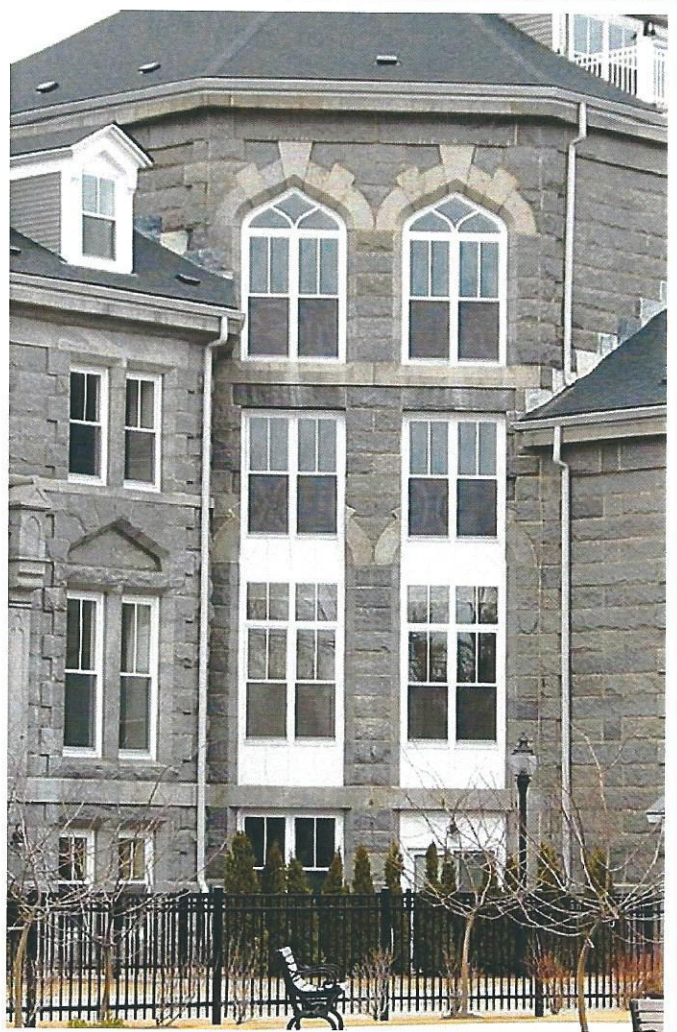
# SERIES 400

## Double Hung, Rated DH Heavy Commercial Thermally Improved Prime Replacement Windows

Utilizes complete Thermal Break Sash and Master Frame for optimal insulating value  
Features 1" clear insulating glass  
Deep double-step Hospital Sill provides superior ventilating and water performance  
Marine Glazing protects glass edge and assures easy repair  
Anti-Creep Lock on top sash creates stability for worry-free operation  
Telescoping Sash Engineering means the best air and water protection  
Special Tubular Sash Design gives added strength and long life  
Block and Tackle Balances are standard  
Custodial Hardware assures safe operation (Ideal for schools and institutional use)

### PERFORMANCE

DH-HC 40 @ 5'6x10'0    DH-HC 65 @ 4'0x6'0  
Air Infiltration @ 1.57 psf: .10  
Water Resistance @ 9.75: No entry  
Uniform Structural Load:  
60 psf @ 5'6x10'0    97.5 psf @ 4'0x6'0  
 $U$  value/conduction @ 0mph: .50  
( $U$ =.44 with Low-E glazing)  
Operating force: 42 lbs max.  
Condensation Resistance Factor: 46



**UNIVERSAL WINDOW  
AND DOOR, LLC.**

