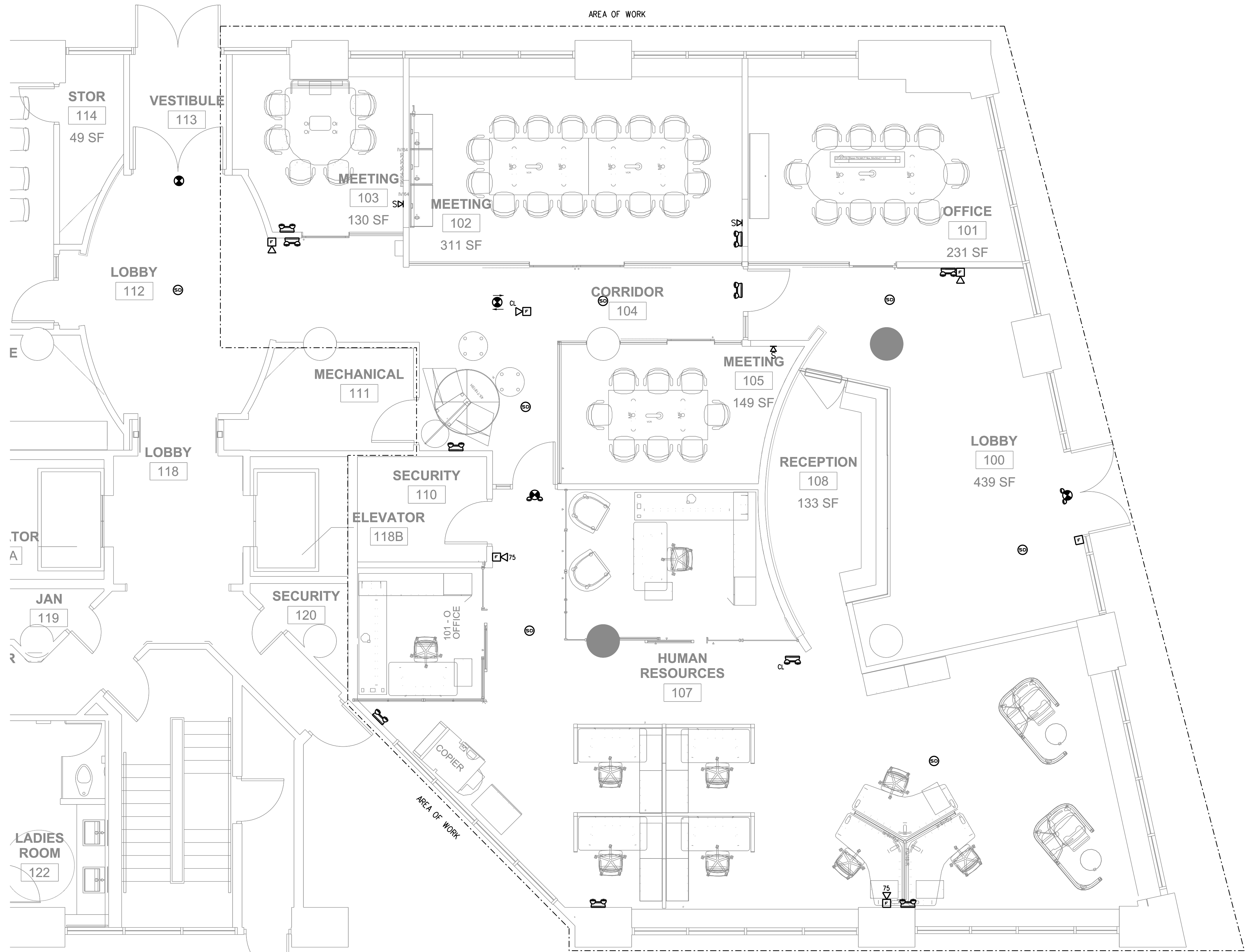


GENERAL NOTES

1. NOT ALL SYMBOLS INDICATED IN THE LEGEND APPEAR ON THE DRAWINGS. COORDINATE WORK ACCORDINGLY. COMPLY WITH SPECIFICATIONS AND NOTES BELOW AS APPLICABLE.
2. ALL RECEPTACLES SHALL BE INSTALLED 18" AFF TO CENTERLINE OF BOX UNLESS NOTED OTHERWISE.
3. ALL WIRING SHALL BE COPPER UNLESS DESIGNATED AS "AL". UNLESS OTHERWISE NOTED ALL WIRING SHALL BE 2*12 AWG AND 1*12 EQUIPMENT GROUNDING CONDUCTOR. HOMERUNS FED FROM A 20A-1P, 120V CIRCUIT IN EXCESS OF 70' SHALL BE *10 AWG.
4. CONNECT BATTERY BACKED EMERGENCY AND EXIT LIGHTING TO NEAREST LIGHTING CIRCUIT AHEAD OF ANY SWITCHING. CONNECT REMOTE HEADS WITH *10 AWG COPPER CONDUCTORS. AC EXIT FIXTURES SHALL BE CONNECTED TO NEAREST EMERGENCY CIRCUIT OR AS INDICATED.
5. TEST ALL EMERGENCY LIGHTING UNITS FOR PROPER OPERATION OF LAMPS AND BATTERIES.
6. SEE MECHANICAL PLAN FOR HVAC UNITS, PUMPS AND FANS CONTROLLED BY THERMOSTATS (PROVIDED BY ATC CONTRACTOR).
7. FUSES AND OVERLOAD UNITS FOR MOTORS SHALL BE SIZED BASED ON ACTUAL MOTOR NAMEPLATE DATA AND IN ACCORDANCE WITH NEC. CIRCUIT BREAKERS FOR MOTORS ARE SUPPLIED AT MAX VALUE PER NEC (2.5 x FLA). SIZE IN THE FIELD IN ACCORDANCE WITH MFR RECOMMENDATION.
8. ALL WORK SHALL COMPLY WITH NFPA70, NFPA72, NFPA101 & ALL FEDERAL, STATE & LOCAL REGULATIONS.
9. ALL PENETRATIONS THROUGH FLOORS, RATED WALLS AND PARTITIONS SHALL BE SEALED WITH UL APPROVED FIRE SEALANT MATERIAL TO MAINTAIN FIRE RATING FOR THE SEPARATION.
10. ALL ENCLOSURES, CONDUIT BODIES AND THEIR COVERS CONTAINING FIRE ALARM SYSTEM CONDUCTORS SHALL BE PAINTED RED.
11. AN EQUIPMENT GROUNDING CONDUCTOR SHALL BE INSTALLED WITH ALL FEEDERS AND BRANCH CIRCUITS. SIZE IN ACCORDANCE WITH NFPA 70 ARTICLE 250.
12. COORDINATE INSTALLATION OF VOICE/DATA OUTLETS WITH OWNER, MIS OR COMMUNICATIONS CONTRACTOR.
13. LOCATE DISCONNECTS AT EQUIPMENT AS REQUIRED BY MANUFACTURER. LOCATIONS ON DRAWINGS ARE APPROXIMATE.
14. PROVIDE RISER OR PLENUM RATED CABLES ABOVE SUSPENDED CEILINGS.
15. ALL CONDUCTOR INSULATION FOR BUILDING WIRE SHALL BE THWN/THHN UNLESS NOTED OTHERWISE.
16. OUTLETS INSTALLED IN FIRE RATED WALLS BACK TO BACK SHALL BE SEPARATED BY 24" MINIMUM OR BE PROTECTED WITH "PUTTY PADS" PER 2009 INTERNATIONAL BUILDING CODE SECTION 713.3.2
17. MINIMUM WIRE SIZE ON ALL BRANCH CIRCUITS SHALL BE *12.

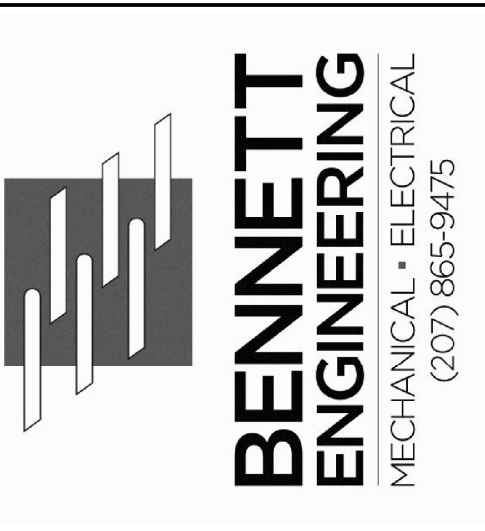
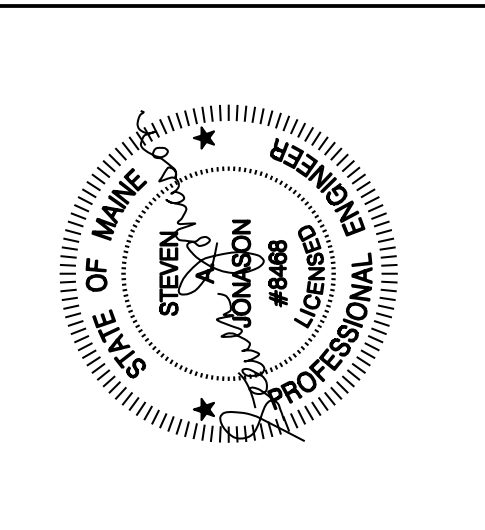
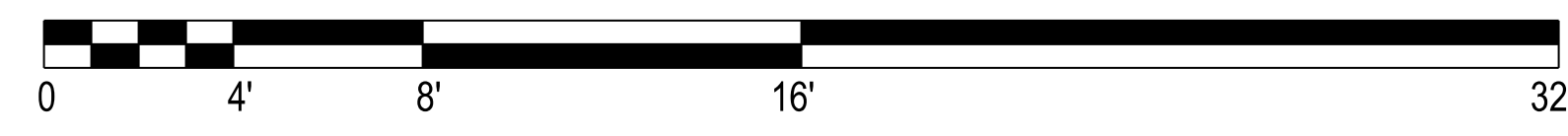
SYMBOL LEGEND

- SELF-CONTAINED EMERGENCY LIGHT W/2 (5W) HEADS DUAL-LITE LZ SER MODEL LZ2DI, 10 WATTS CAPACITY FOR 90 MINUTES, COLOR BY ARCHITECT
- EMERGENCY LIGHTING BATTERY PACK DUAL-LITE No LM130-12VI-0 SELF-DIAGNOSTIC
- INTERIOR REMOTE HEAD DUAL-LITE (LED) MODEL No CPRD 1203L, COLOR BY ARCHITECT
- EXTERIOR REMOTE HEAD DUAL-LITE (LED) MODEL No OCRD 1203L COLOR BY ARCHITECT
- EXIT LIGHT FIXTURE, UNSWITCHED, DUAL-LITE LX-U-R-W-E OR APPROVED EQUAL
- FIRE ALARM CONTROL PANEL
- FIRE ALARM ANNUNCIATOR PANEL
- FIRE EXTINGUISHER ELECTRONIC MONITOR-SHALL BE ACCOMPLISHED THROUGH USE OF AN ADDRESSABLE INTERFACE DEVICE AND SHALL PROVIDE INPUT TO THE FACP
- FIRE ALARM AUDIO/VISUAL, MOUNT 6'-8" AFF. NUMBER DENOTES CANDELA RATING. "MH" DENOTES MINHORN, "CL" DENOTES CEILING MOUNTED. NO DESIGNATION EQUALS 15cd
- FIRE ALARM PULL STATION, MOUNT 48" AFF
- FIRE ALARM VISUAL STROBE ONLY, FLUSH MOUNT 6'-8" AFF, NUMBER DENOTES CANDELA RATINGS. "CL" DENOTES CEILING MOUNTED
- SYSTEM CONNECTED SMOKE / CARBON MONOXIDE DETECTOR, PHOTOELECTRIC TYPE
- SYSTEM CONNECTED FIXED TEMPERATURE HEAT DETECTOR
- SMOKE DETECTOR, PHOTOELECTRIC TYPE, SYSTEM CONNECTED.
- SMOKE DETECTOR, PHOTOELECTRIC TYPE, SYSTEM CONNECTED. "ER" DENOTES ELEV RECALL
- SYSTEM CONNECTED SMOKE DETECTOR, PHOTOELECTRIC TYPE, WITH SOUNDER BASE
- CARBON MONOXIDE DETECTOR
- DUCT SMOKE DETECTOR & TEST STATION
- FIRE/SMOKE DAMPER, SUPPLIED AND INSTALLED BY MECHANICAL CONTRACTOR. ELECTRICAL CONTRACTOR TO PROVIDE ALL WIRING CONNECTIONS AND FIRE ALARM DUCT SMOKE DETECTORS, ADDRESSABLE MODULES AND PROGRAMMING.
- SPRINKLER SYSTEM FLOW SWITCH } SUPPLIED BY SPRINKLER CONTRACTOR
- SPRINKLER SYSTEM TAMPER SWITCH } WIRING BY EC, VERIFY LOCATIONS WITH SPRINKLER CONTRACTOR.



NOTE: ALL NEW FIRE ALARM DEVICES SHALL BE CONNECTED TO EXISTING FIRE ALARM SYSTEM.

FIRST FLOOR LIFE SAFETY PLAN
SCALE: 1/4" = 1'-0"



MEMIC OFFICE
HUMAN RESOURCES RENOVATION
261 COMMERCIAL ST., PORTLAND, ME 04101
FIRST FLOOR LIFE SAFETY PLAN

Date Drawn - 2-21-17

Drawn By - CAT/SAJ

Revised -

Project • 4001

Scale - AS NOTED

Sheet Number - LS1