

Interior Painting Schedule

Products specified are by Sherwin Williams unless noted otherwise. This table is generic. Not all products specified below are required for this project

Gypsum board ceiling and soffits

- Primer: B28W08000 - PVA Drywall Primer & Sealer White or tinted gray for deep colors
- 2 Finish Coats: B30W02651 - ProMar® 200 Zero VOC Interior Latex Extra White, Flat-G1

Gypsum board walls

- Primer: B28W08000 - PVA Drywall Primer & Sealer White or tinted gray for deep colors
- 3 Finish Coats: B20W02651 - ProMar® 200 Zero VOC Interior Latex Eg-Shel Extra-G3 (Contractor may notify Architect/Tenant after 2nd finish coat to determine if sufficient coverage has been achieved)

Hollow Metal Door Frames and Doors (primer applied by manufacturer)

- Confirm type and compatability of primer used by manufacturer with specified paint
- 2 Finish Coats: B66W00211 - DTM Acrylic Coating Semi-Gloss G-5 Extra White/Tint Base

Structural Steel, Metal Fabrications: (Bare, unprimed, columns, beams, joists, etc.)

- Primer
- 2 Finish Coats: B66W00211 - DTM Acrylic Coating Semi-Gloss G-5 Extra White/Tint Base

Dressed Lumber, Painted (doors, door and window casings, handrails, wall caps, wood trim),

- Primer:
- 2 Finish Coats: B66W00211 - DTM Acrylic Coating Semi-Gloss G-5 Extra White/Tint Base

Dressed Lumber, Polyurethane (doors, door and window casings, handrails, wall caps, wood trim),

- Stain: (if scheduled)
- 3 Coats Polyurethane

Interior Brick

- surface preparation: Remove all surface contamination by washing with an appropriate cleaner, rinse thoroughly and allow to dry. Scrape and sand peeled or checked paint to a sound surface. Sand glossy surfaces dull.
- Primer: Loxon Concrete and Masonry primer/sealer, A24W8300
- 3 Finish Coats: B20W02651 - ProMar® 200 Zero VOC Interior Latex Eg-Shel Extra-G3 (Contractor may notify Architect/Tenant after 2nd finish coat to determine if sufficient coverage has been achieved)

Gypsum Board or Wood Light Valance

- Primer:
- 2 Finish Coats: Gloss G-6 White Enamel

Interior Intumescent Paint (Submit proof of acceptance by Maine State Fire Marshal's Office)

- Primer: Select primer approved by manufacturer for substrate and intumescent paint
- Intumescent paint: B59W05120 - FIRETEX FX5120 WHT
- 2 Finish Coats

Electrostatic Painting at Light Fixtures

- POLY-EPOXY Semi-Gloss Electrostatic Enamel F64w.1

General Painting Notes:

- Provide all required painting of all surfaces before installation of demountable furniture partitions, demountable walls, or any other equipment such as copiers, shelving units, water coolers, etc.
- Submit product data sheets for each paint product. Data sheets shall include a description of the products, and its characteristics. Contractor shall follow manufacturer's written recommendations for surface preparation and application, and cautions in regard to use of the paint product. All materials, preparation and workmanship shall conform to requirements of the latest edition of the Architectural Painting Specification Manual by the Master Painters Institute (MPI)
- Apply paint only to dry, clean, properly cured and adequately prepared surfaces in areas where dust is no longer generated by construction activities such that airborne particles will not affect the quality of finished surfaces.
- Ensure that adequate continuous ventilation and sufficient heating and lighting is in place.
- Perform no painting or decorating work when the maximum moisture content of the substrate exceeds:
 - 15% for wood.
 - 12% for plaster and gypsum board.
- Conduct all moisture tests using a properly calibrated electronic Moisture Meter, except test concrete floors for moisture using a simple cover patch test
- Surfaces to be painted by electrostatic means:
 - Examine existing surface for defects or conditions that need to be corrected to achieve an acceptable finished surface. Submit description of preparation required.
 - Sand or chemically clean surfaces that are abraded, corroded or otherwise contain imperfections

MEMIC Wall Colors:

SW = Sherwin Williams
DE = Dunn Edwards

P-1 Neutral Ground: SW 7568 LRV 70%
P-2 Spanish Peanut: DE 5180: LRV 24%
P-3 Before the Storm: DE 5796: LRV 13%
P-4 Cape Cod Blue: DE C792: LRV 32%
P-5 Missing Link: DE 6041: LRV 11%

Cabinet Notes

Provide blocking as required for cabinets: refer to millwork shop drawings for exact locations

Hardware:

Pulls: Emtek #86162 "Trail" Pull, Polished Chrome
Hinges: Blum Clip 120
Shelf Clips: AllenFields HD - clear
Drawer Slides: 20" KV 8400
Grommet Outwater: 31BK, Black

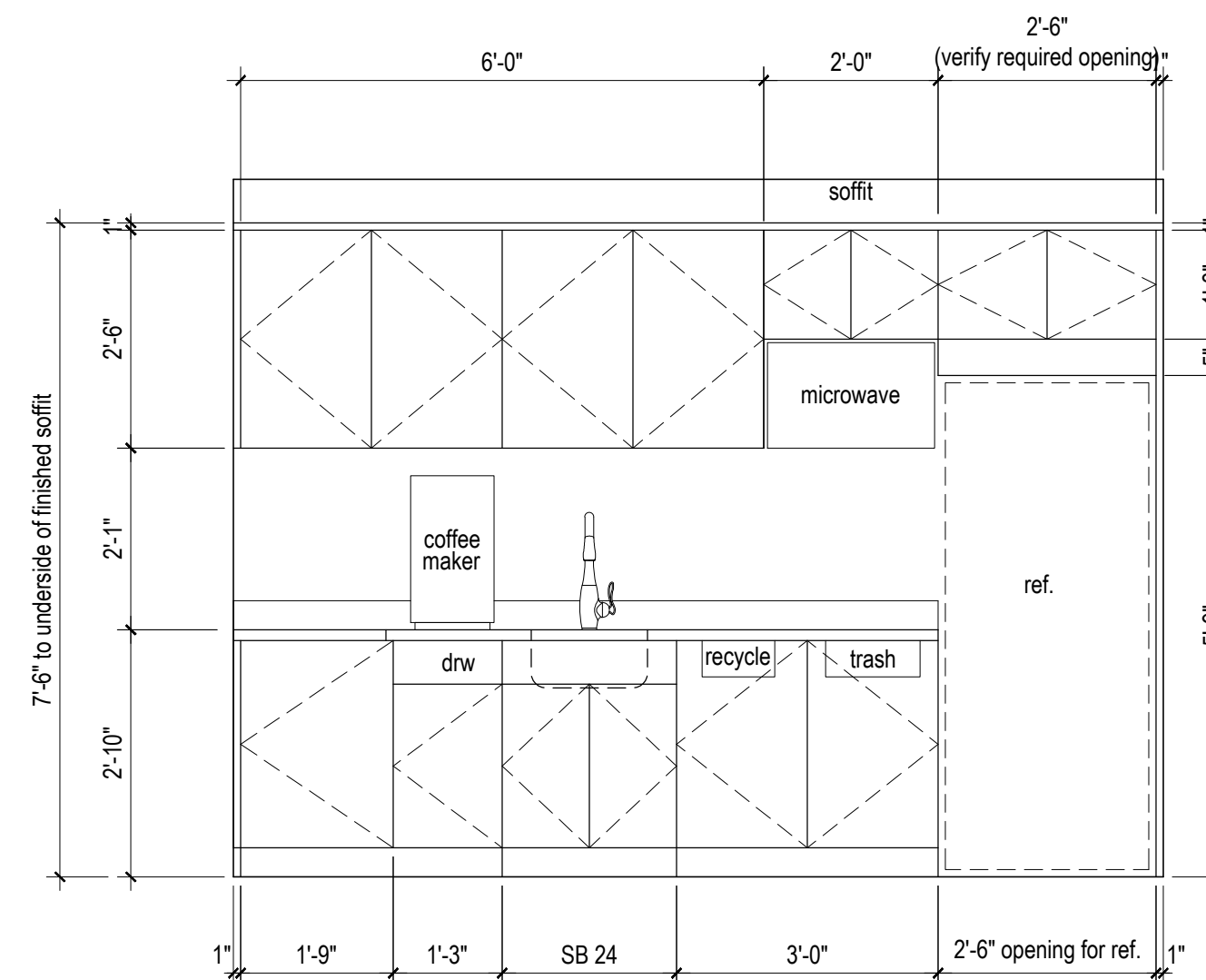
Edgeworking

Doors: 3mm Charter Industries NS618 Chinchilla
Carcass: VST #637 Abet Laminate
Shelves: .018 Charter Industries WE261 PVC

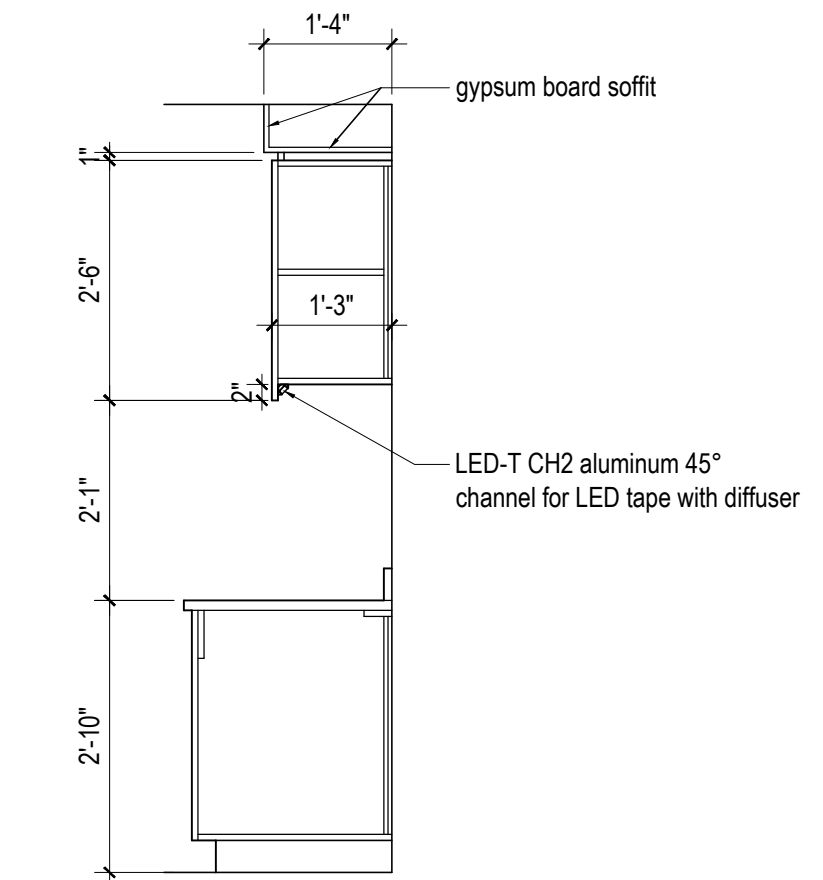
Laminate: Abet Laminati #637 Holz
Countertop and 4" backsplash: Quartz Riverbed by Constantino

Appliances

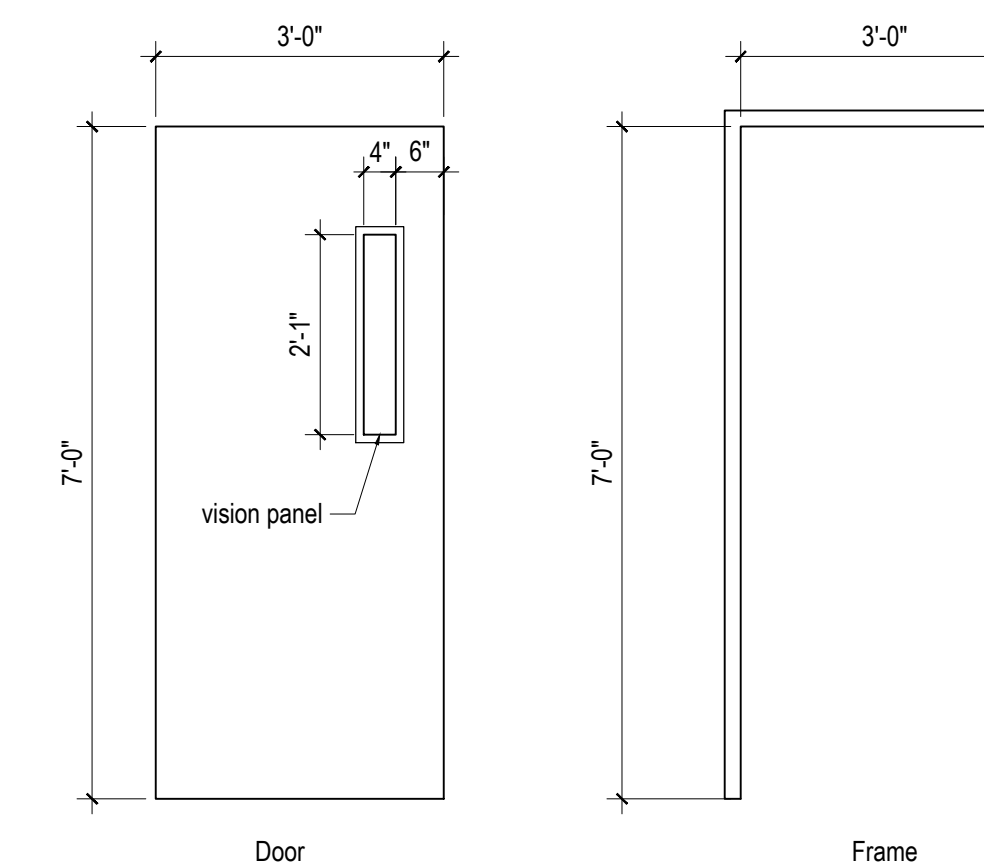
Sink: Elkay ELUHAD 1616
Faucet: Elkay Allure LK7921ss
Refrigerator: Fisher and Paykel RF135BDRUX4; H68" x W25" x D29"
Provide dedicated water to coffee maker and refrigerator.
MicroWave: Sharp R1211T 1.5 cu.ft 1100 watt over the counter in stainless steel finish 24w x 14h x 15½d



A Counter Elevation at Collab-cafe
1/2" = 1'-0"



B Counter Section at Collab-cafe
1/2" = 1'-0"



C New Rated Door and Frame at Stair 401
1/2" = 1'-0"

Reference Specification:

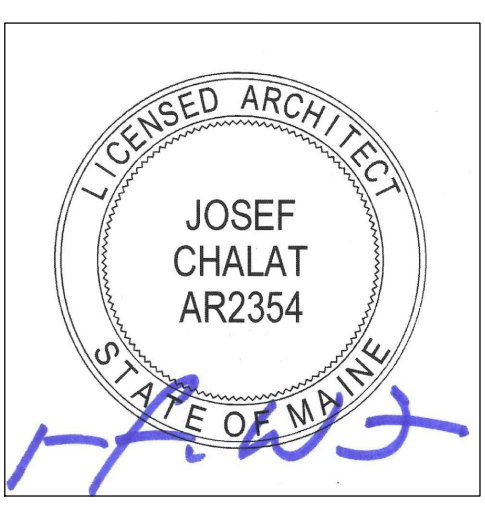
Frame:
SteelCraft F series 90 minute welded frame, standard double rabbet, 5/8" frame with anchors for existing masonry, grouted solid in concrete block opening.

Door:

Algoma FD 1½ Hour rated door, flush style, with rotary birch face, stained to MEMIC building standard color, with 4x25 (100 inch squared) vision panel.

Hardware

Lever operator and closer shall be ADA compliant, MEMIC standard for style and finish



Lisa Whited
Chief Transformation Officer
207.329.2189 lisa@workplaceeff.com

Michael Barton
Value and Constructability Analyst
207.939.5432 michael@workplaceeff.com

Josef Chalat
Maine Licensed Architect
207.318.3234 AzimuthBlu@gmail.com

Mechanical and Electrical Engineering:
Bennet Engineering
contact: Cat Tienberg
ph (207) 865-9475
Cat@bennetengineering.net

Project:

MEMIC
Tenant Improvement to 3rd, 4th, and 5th floors
261 Commercial Street, Portland Maine
CBL 038 F019

Tenant: MEMIC
261 Commercial Street
Portland Maine, 04101

Tenant Contact
Catherine Lamson,
Senior Vice President
Chief Administrative Officer
(207) 791 3304

Building Owner:
Casco View Holdings II, LLC
PO Box 1137
Portland, ME 04104

General Contractor:
Zachau Construction
1185 U.S. Route One
Freeport, ME 04032
ph (207) 865-9925 (office)
contact: Jon
207.807.8980 (mobile)
Jon@zachauconstruction.com

Date	Purpose
08/13/2015	Review by JD not for construction

Sheet Title
**Elevations, Plan
Enlargements**

Sheet Number

a7