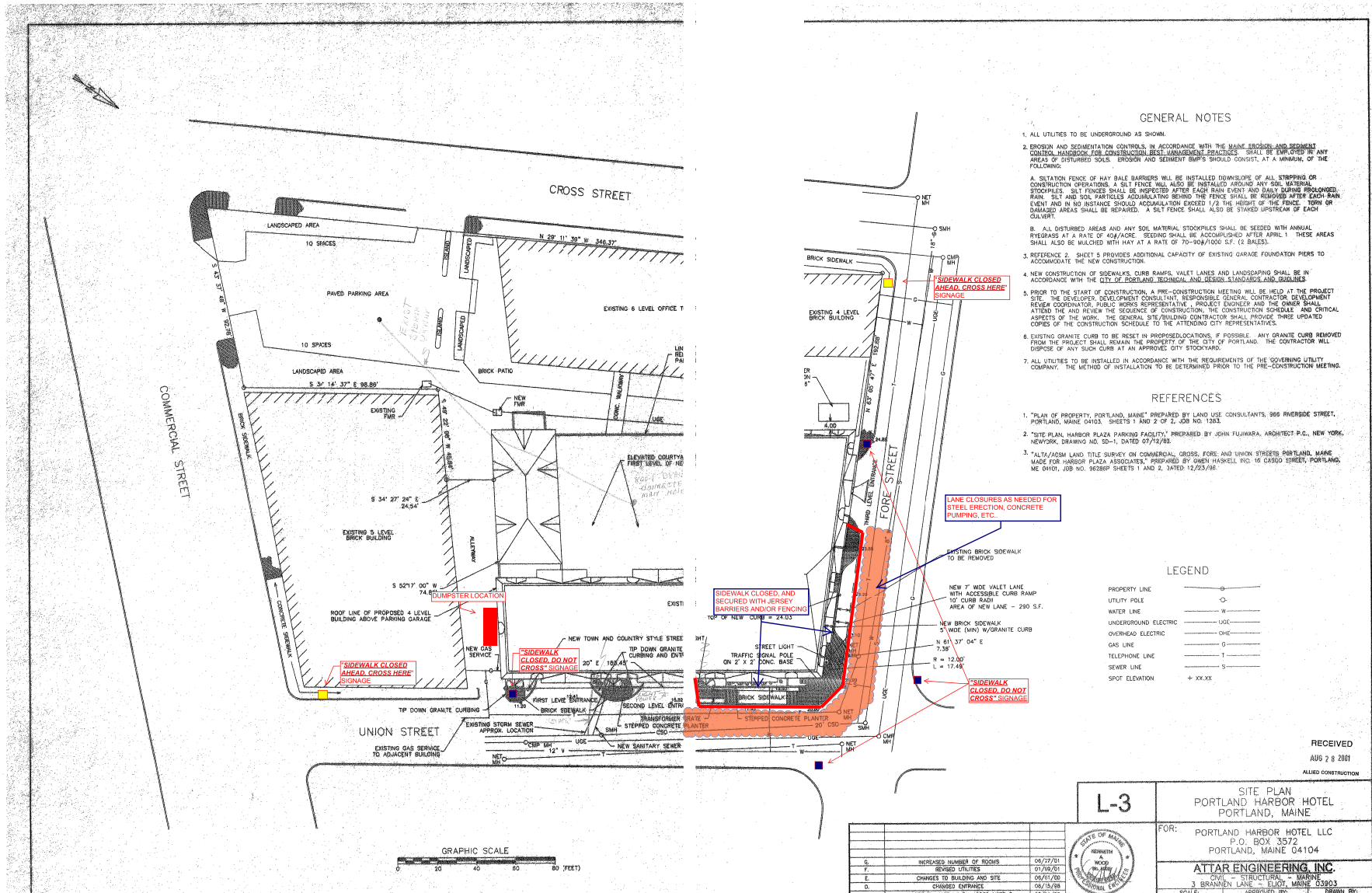


PORTLAND HARBOR HOTEL RENOVATIONS: CONSTRUCTION MANAGEMENT PLAN (DURING MAIN ENTRANCE CLOSURE)



GENERAL NOTES:

1. PEDESTRIAN TRAFFIC TO BE CONTROLLED WITH BARRICADES, MUTCD SIGNAGE, FENCING, AND/OR JERSEY BARRIERS.
2. TEMP FENCE TO HAVE SAFETY SIGNAGE SUCH AS: "HARD HAT AREA", "NO TRESPASSING", "CONSTRUCTION AREA", ETC...
3. CLOSED PARKING AND SIDEWALKS TO BE COORDINATED WITH PUBLIC SERVICES AND PUBLIC SAFETY.
4. CLOSED STREETS AND TRAFFIC LANE CLOSURES TO BE COORDINATED WITH PUBLIC SERVICES AND PUBLIC SAFETY.
5. LANE CLOSURES AS NEEDED FOR CONSTRUCTION OPERATIONS. IF OR WHEN TRAFFIC FLOW IS IMPACTED, TRAFFIC CONTROL WILL BE MAINTAINED USING FLAGGERS, MUTCD SIGNAGE, ETC...
6. SAMPLE SIGNAGE ATTACHED.

SIDEWALK CLOSED
↕
USE OTHER SIDE



Blank lined writing area with two vertical margin lines.

Blank lined writing area with horizontal lines.