

Prepared For:
HARBOR PLAZA ASSOCIATES II
 470 FORE ST. SUITE 400
 PORTLAND, ME

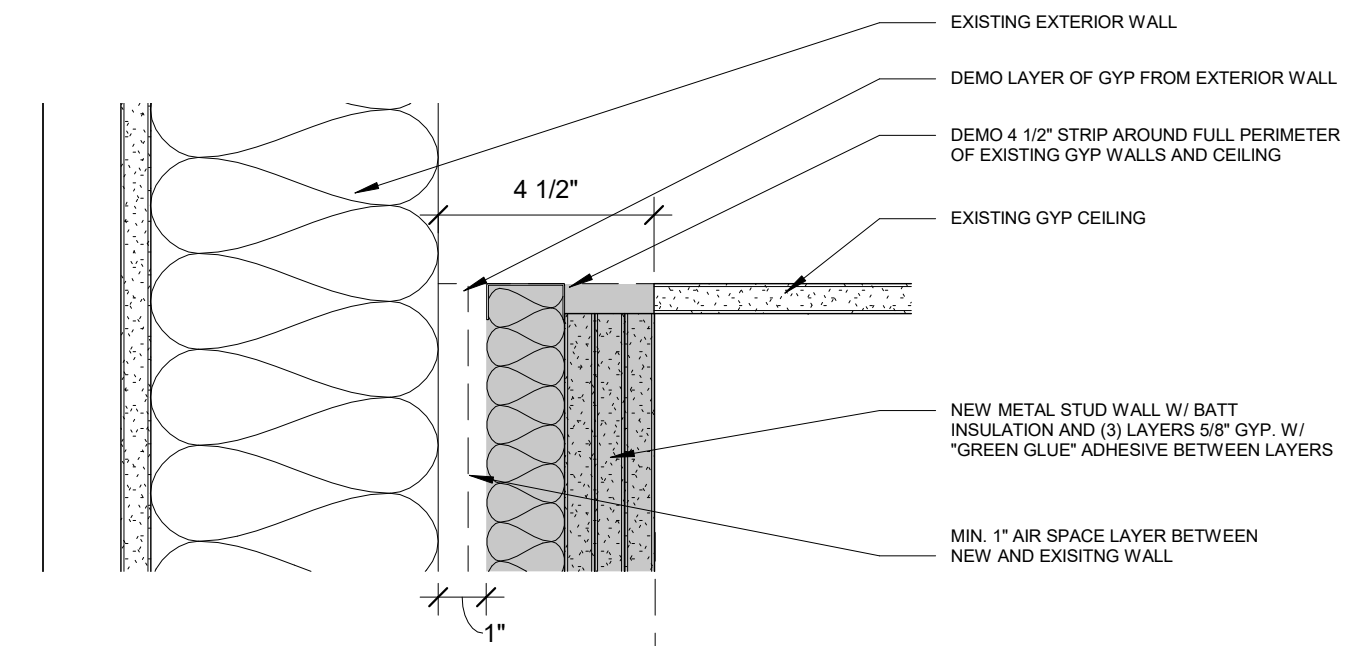
Consultant:
ARCHETYPE architects
 48 Union Wharf Portland, Maine 04101
 (207) 772-6022 Fax (207) 772-4056

Project:
Portland Harbor Hotel
 468 Fore Street Portland, ME 04101

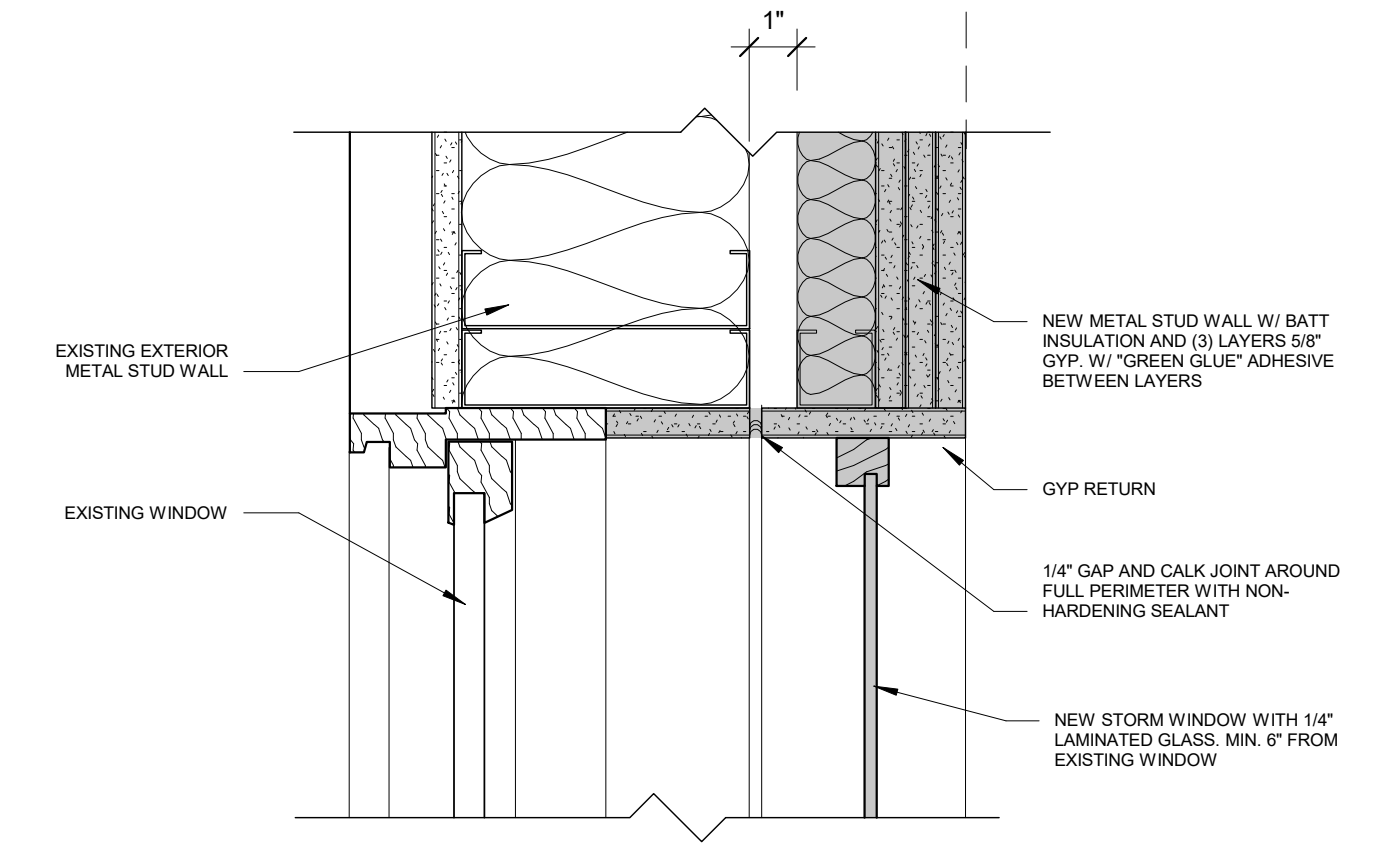
Revisions:

Date: 10 OCT 2016
 Scale: As indicated
ACOUSTIC IMPROVEMENT - PLANS AND DETAILS

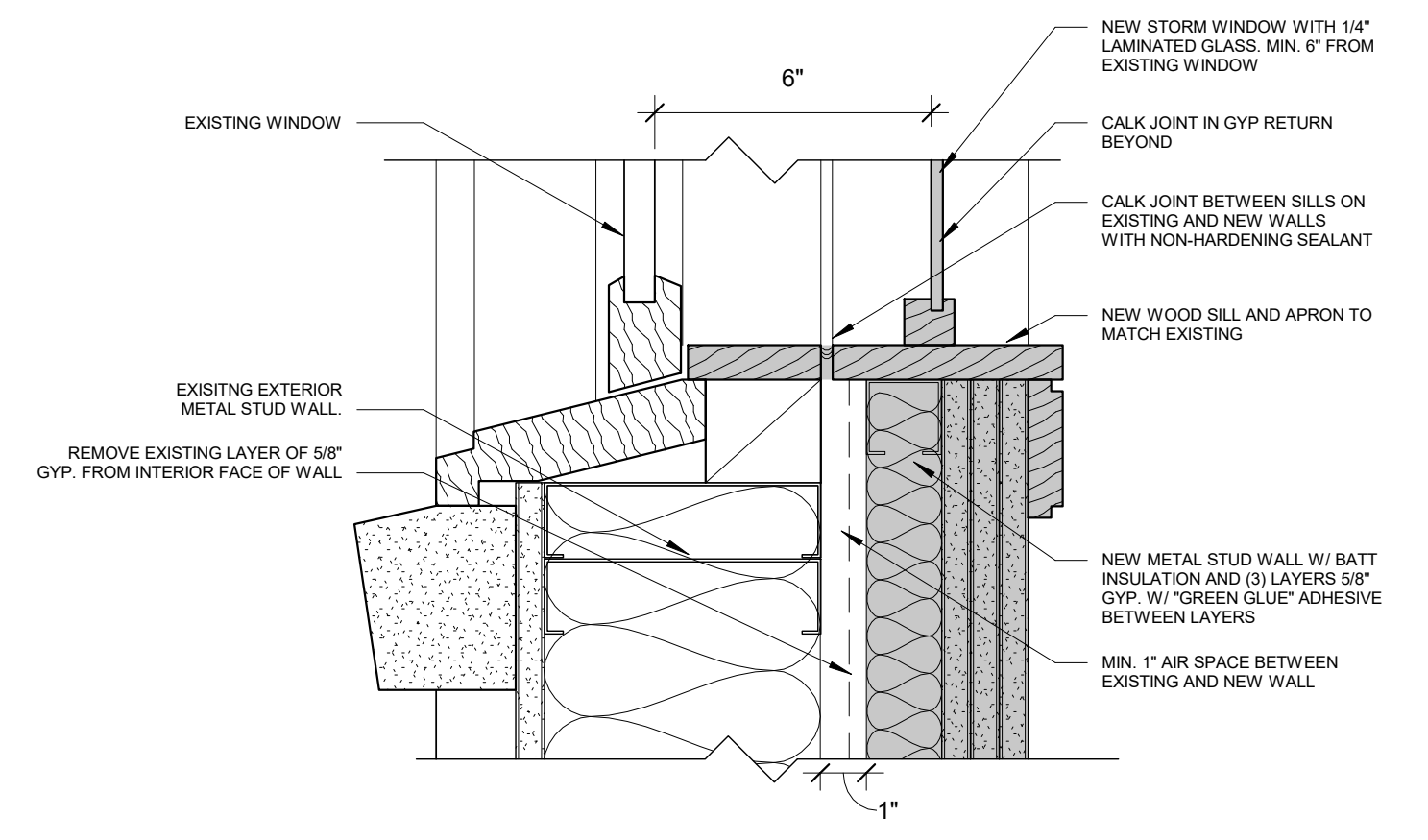
A7.02



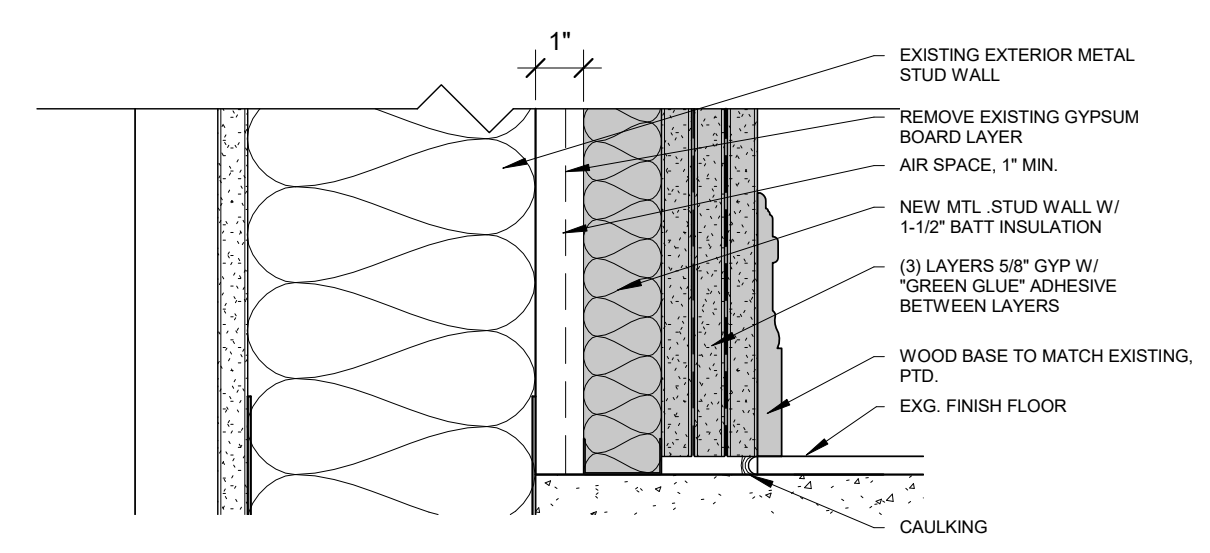
9 | TOP OF WALL DETAIL
 3" = 1'-0"



8 | WINDOW HEAD DETAIL
 3" = 1'-0"

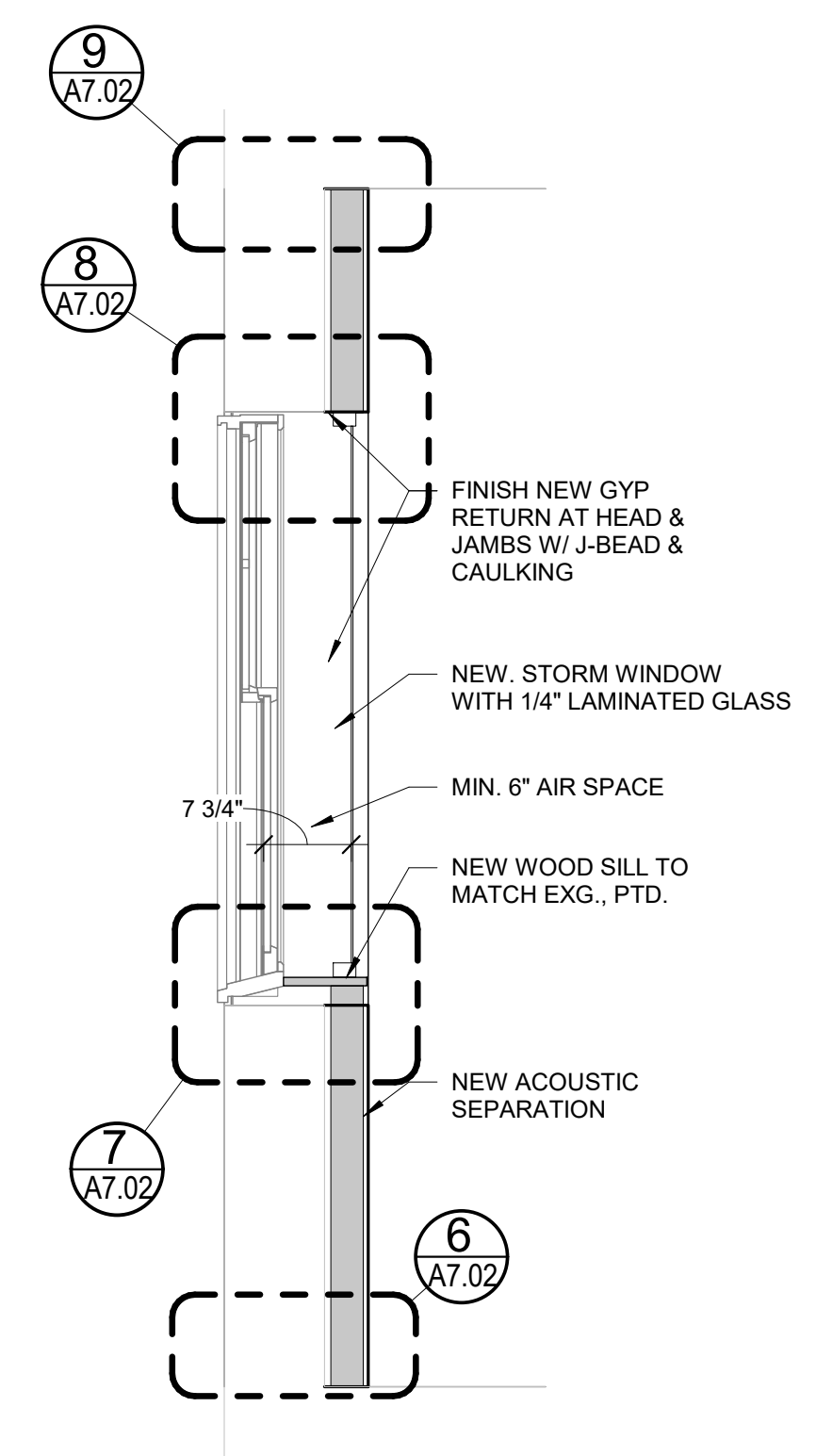


7 | WINDOW SILL DETAIL
 3" = 1'-0"

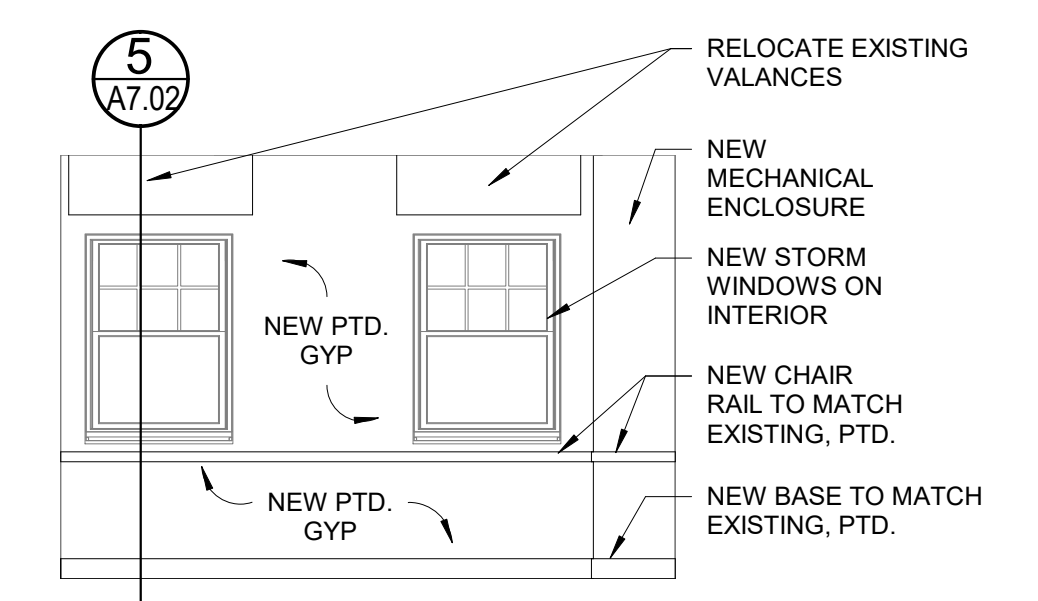


6 | BASE OF WALL DETAIL
 3" = 1'-0"

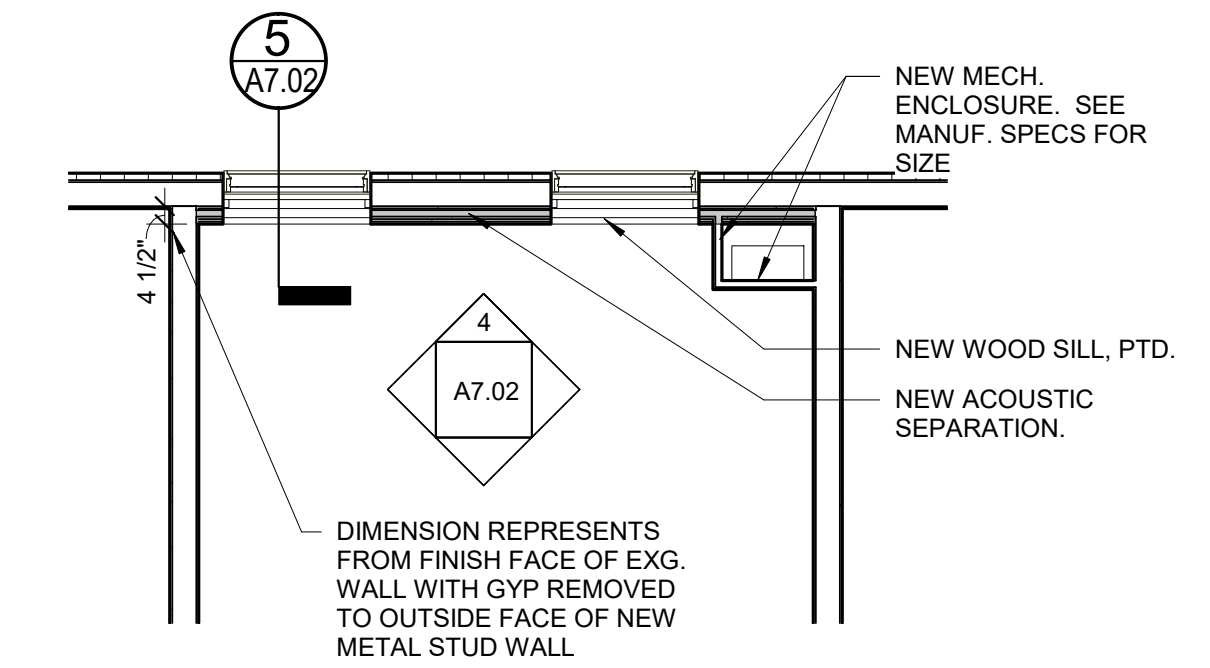
GREEN GLUE SUPPLIER:
 MARJAM SUPPLY COMPANY
 257 Mammoth Rd Manchester, NH 03109
 603-668-1000
<http://www.greengluecompany.com>



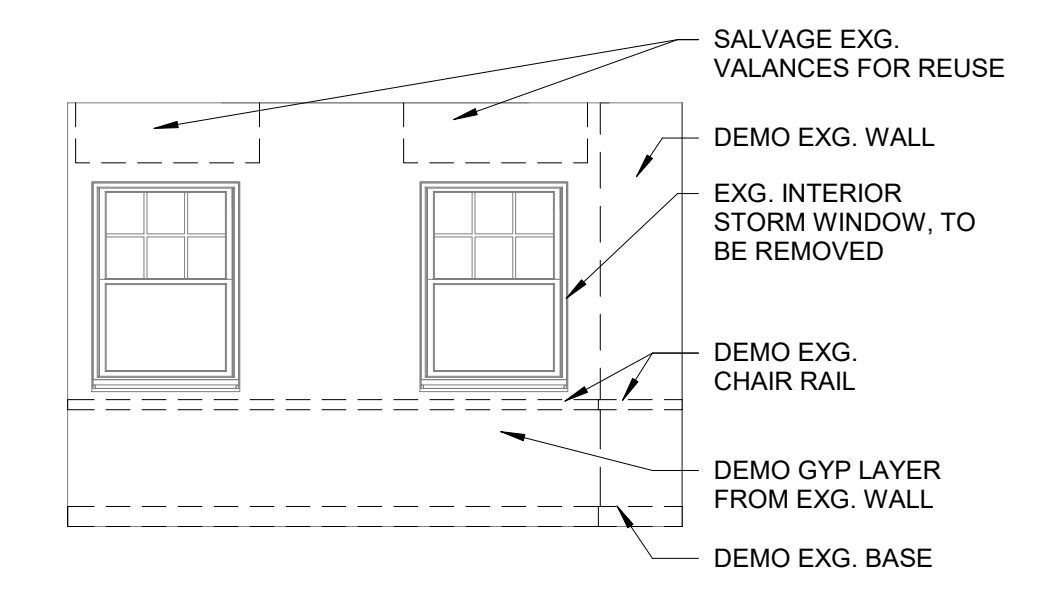
5 | WALL SECTION
 3/4" = 1'-0"



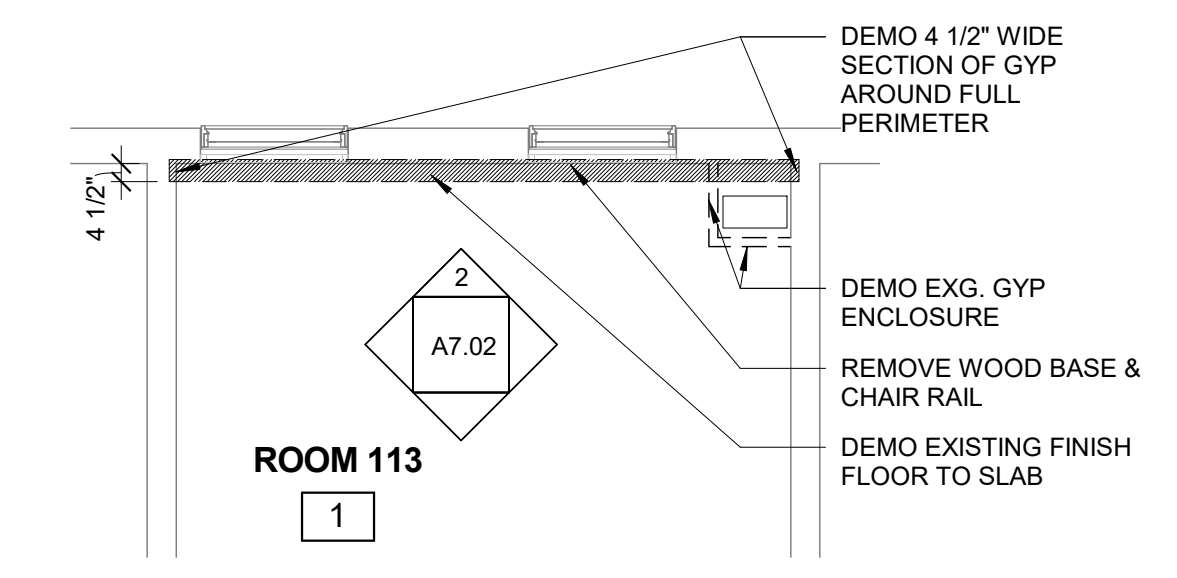
4 | TYP. NEW UNIT ELEVATION
 1/4" = 1'-0"



3 | TYP. NEW UNIT PLAN
 1/4" = 1'-0"



2 | TYP. DEMO ELEVATION
 1/4" = 1'-0"



1 | TYP. EXISTING WALL & DEMO
 1/4" = 1'-0"