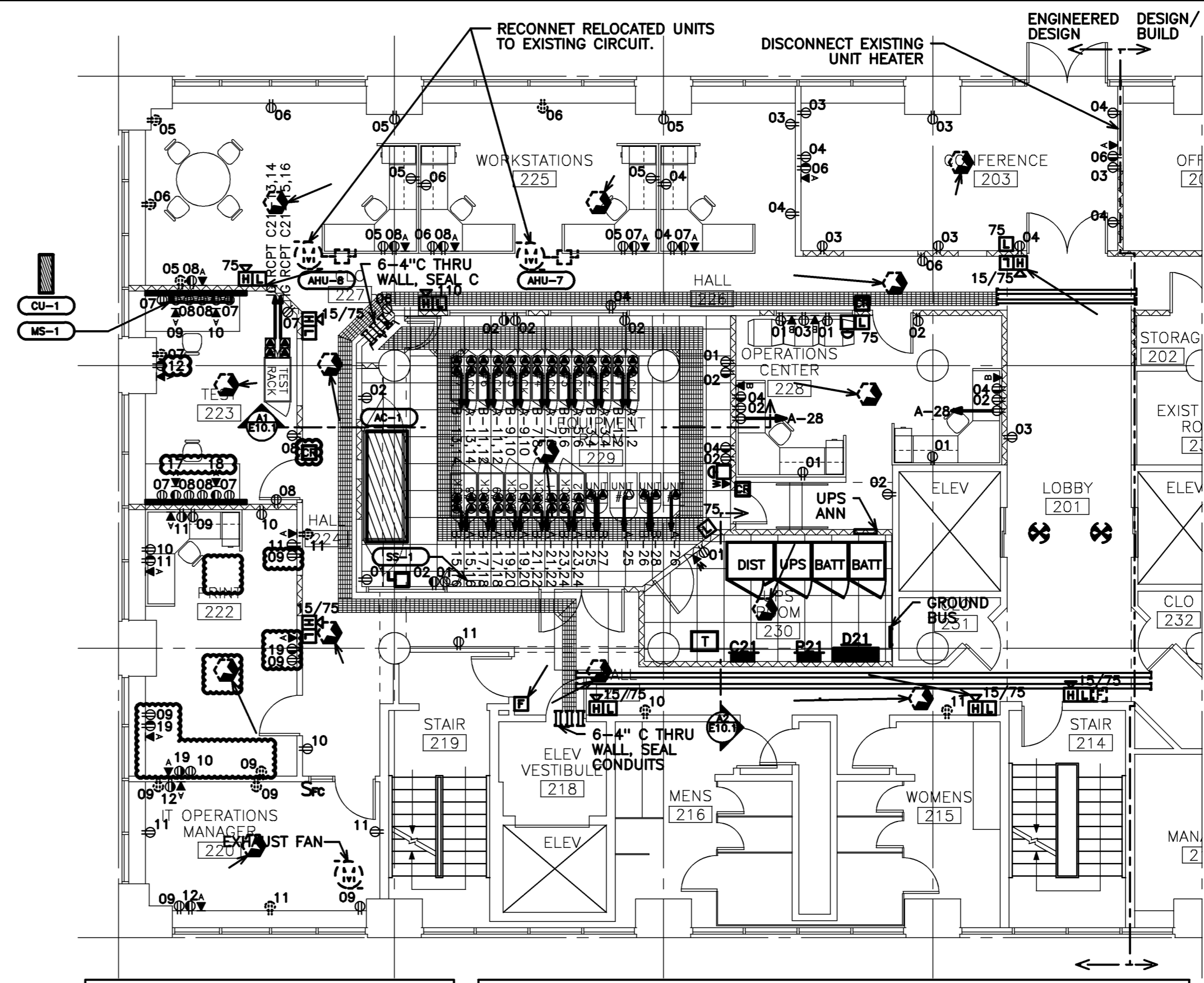


NOTE: ALL LIGHTING SHALL BE CIRCUITED TO PANEL P21 UNLESS OTHERWISE NOTED.

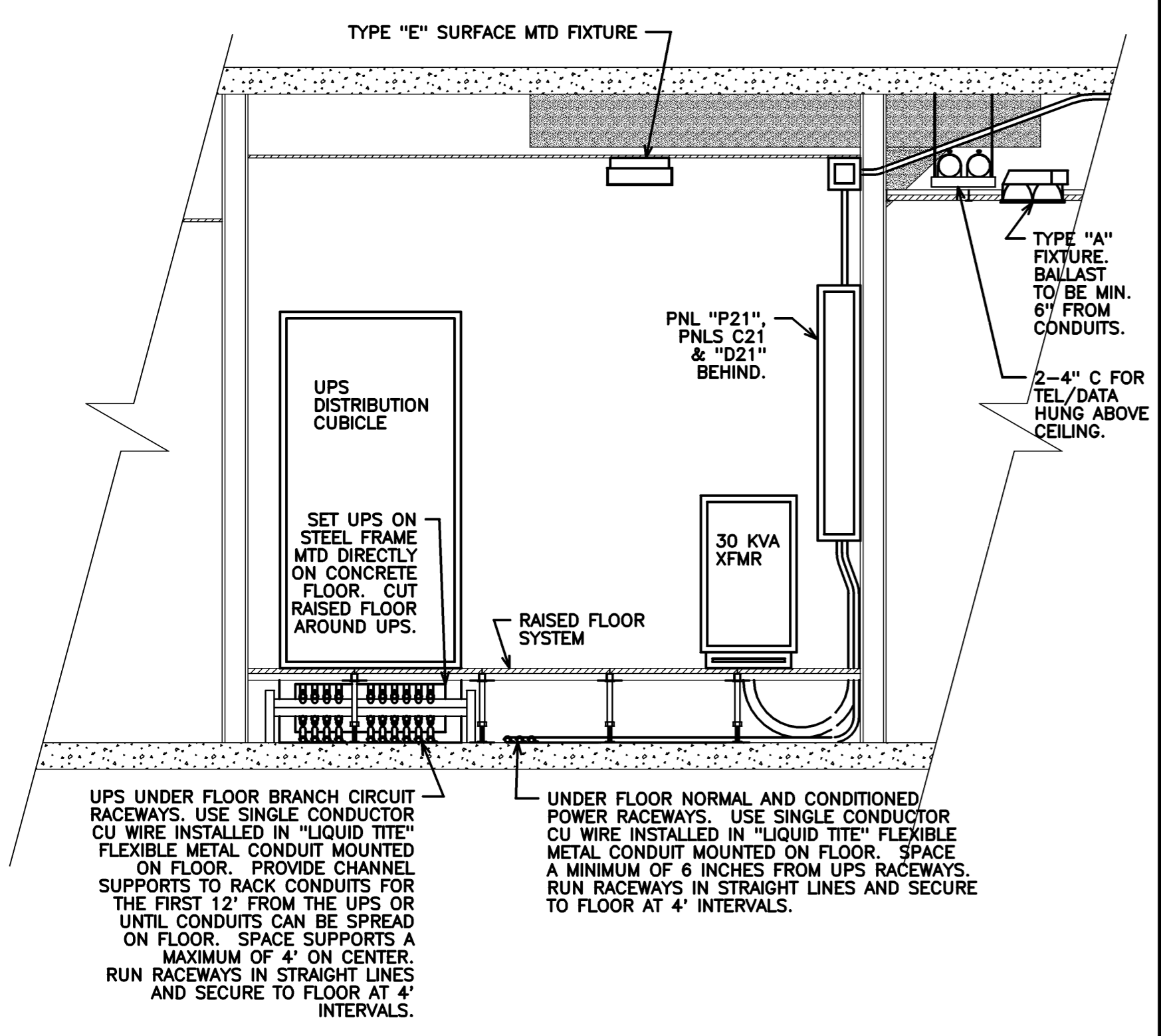
**SECOND FLOOR PARTIAL PLAN - LIGHTING**  
 1/8" = 1'-0" REF: NA **B2**



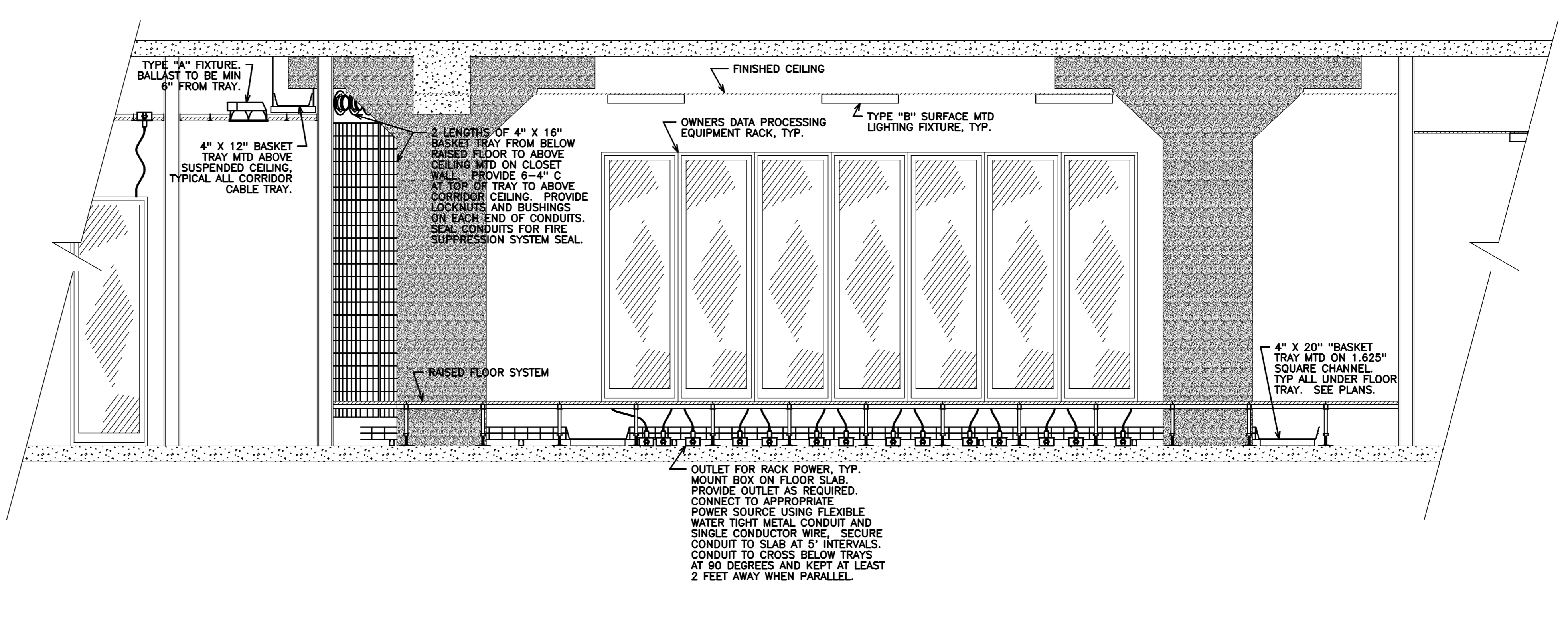
UNIT #	LOCATION	DESCRIPTION
UNIT #1	DOM 400	
UNIT #2A	BOTTOM	MEMIC EXPANSION UNIT
UNIT #2B	TOP	3570 C12
UNIT #3		MEMIC 400
UNIT #4A	BOTTOM	DEV 400
UNIT #4B	TOP	3570 C01

NOTE: 1. ALL NORMAL DUPLEX RCPT SHALL BE CIRCUITED TO PANEL P21 UNLESS OTHERWISE NOTED.  
 2. ALL ISOLATED GROUND DUPLEX RCPT SHALL BE CIRCUITED TO PANEL C21 UNLESS OTHERWISE NOTED.  
 3. CIRCUITS LABELED "A" SHALL BE CIRCUITED TO PANEL A LOCATED IN THE UPS.  
 4. CIRCUITS LABELED "B" SHALL BE CIRCUITED TO PANEL B LOCATED IN THE UPS.  
 5. RELOCATE AND RECIRCUIT FIRE ALARM EQUIPMENT USING THE ARROWS TO INDICATE REVISED LOCATIONS OF EXISTING EQUIPMENT.  
 6. RETURN ALL UNUSED FIRE ALARM DEVICES TO OWNER.

**SECOND FLOOR PARTIAL PLAN - POWER**  
 1/8" = 1'-0" REF: NA **B1**



**DATA PROCESSING EQUIPMENT ROOM - SECTION**  
 SCALE: NONE REF: NA **A2**



**DATA PROCESSING EQUIPMENT ROOM - SECTION**  
 SCALE: NONE REF: NA **A1**

Mark	Date	Description
-	11-03-04	ISSUED FOR CONSTRUCTION
-	10-19-04	90% REVIEW
-	10-01-04	DD REVIEW

Drawing Status