

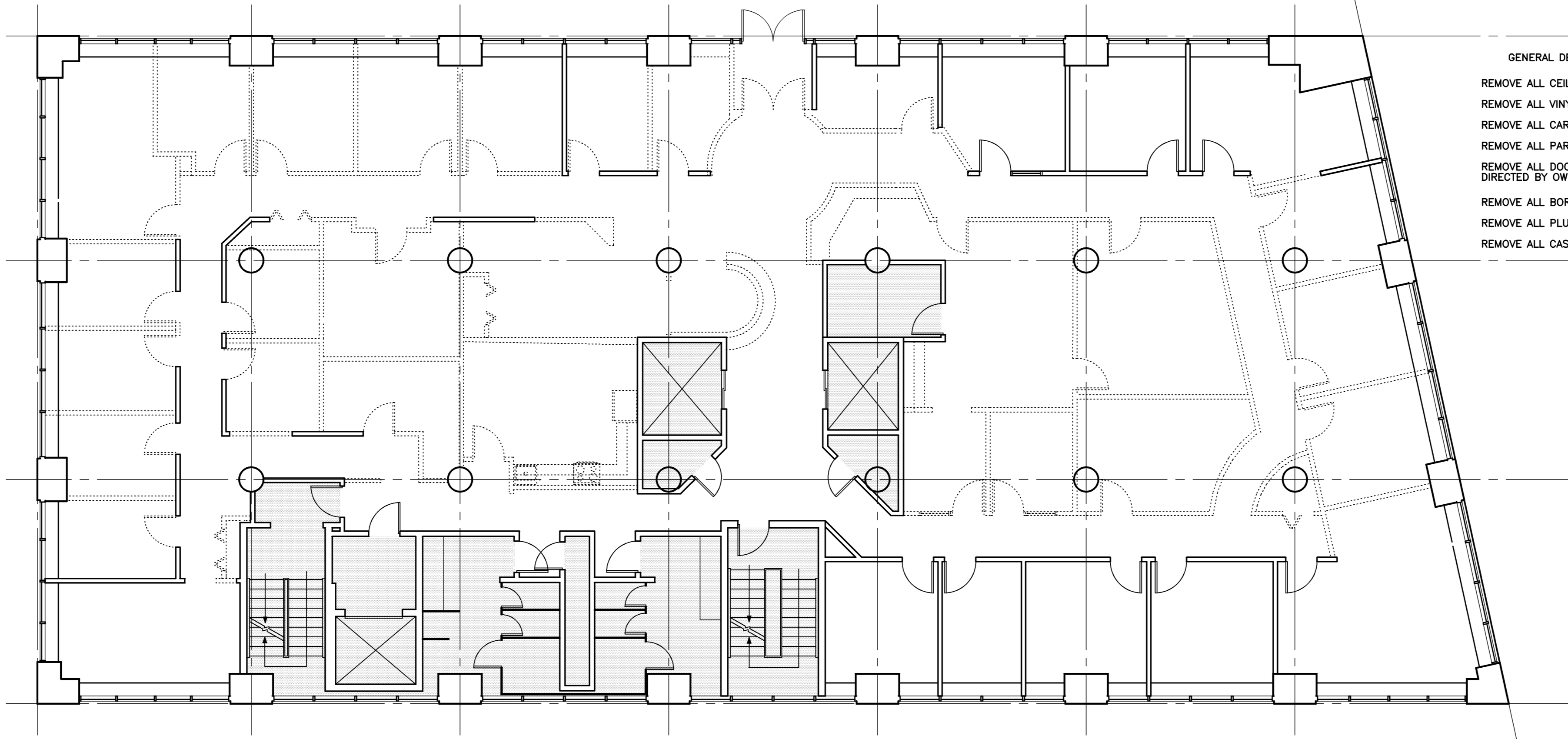
Project Title
**MEMIC
COMPUTER ROOM
RELOCATION**
PORTLAND, MAINE

HA Project No. **04150**



Key Plan 

SELECTIVE DEMOLITION AND PATCHING

1. ERECT AND MAINTAIN DUSTPROOF PARTITIONS AND TEMPORARY ENCLOSURES TO LIMIT DUST AND DIRT MIGRATION AND TO SEPARATE AREAS FROM FUMES AND NOISE.
2. PROTECT WALLS, CEILINGS, FLOORS, AND OTHER EXISTING FINISH WORK THAT ARE TO REMAIN AND ARE EXPOSED DURING SELECTIVE DEMOLITION OPERATIONS. COVER AND PROTECT FURNITURE, FURNISHINGS, AND EQUIPMENT THAT HAVE NOT BEEN REMOVED. COVER GRILLES AND DIFFUSERS TO PREVENT ENTRANCE OF DUST AND DEBRIS INTO DUCTS.
3. PROVIDE AND MAINTAIN INTERIOR AND EXTERIOR SHORING, BRACING, OR STRUCTURAL SUPPORT TO PRESERVE STABILITY AND PREVENT MOVEMENT, SETTLEMENT, OR COLLAPSE OF BUILDING TO BE SELECTIVELY DEMOLISHED.
4. FURNITURE REMOVAL: THE OWNER WILL REMOVE CONTENTS AND MOVEABLE FURNITURE FROM SPACES TO BE FULLY RENOVATED. THE CONTRACTOR SHALL MOVE FURNITURE OUT OF THE WAY AND COVER FURNITURE, SHELVING AND EQUIPMENT WITH 4 MIL POLYETHYLENE TO PROTECT FROM DUST AND DIRT IN ROOMS WHERE LIMITED USE OF SPACE IS REQUIRED, SUCH AS FIRE ALARM WORK OR SPRINKLER WORK. THE OWNER WILL REMOVE BOOKS AND PAPERS FROM SHELVES REQUIRING RELOCATION.
5. PATCHING: USE PATCHING MATERIALS THAT ARE IDENTICAL TO THE MATERIALS OF THE WORK TO BE CUT, UNLESS INDICATED AS SPECIFIC MATERIALS SPECIFIED IN OTHER SECTIONS. FOR EXPOSED MATERIALS FOR CLOSING UP OPENINGS, USE MATERIAL IDENTICAL TO THOSE OF THE ADJACENT CONSTRUCTION; CONCEALED MATERIALS ARE NOT REQUIRED TO BE IDENTICAL. IF IDENTICAL MATERIALS ARE NOT AVAILABLE OR CANNOT BE USED, USE MATERIALS THAT MATCH VISUALLY TO THE FULLEST EXTENT POSSIBLE; OBTAIN APPROVAL OF THE ARCHITECT. USE MATERIALS THAT PERFORM EQUALLY AS WELL AS, OR BETTER THAN, THE MATERIAL CUT.
 - a. WORK EXPOSED TO VIEW: DO NOT CUT OR PATCH IN A MANNER THAT WOULD, IN THE ARCHITECT'S OPINION, RESULT IN A LESSENING OF THE BUILDING'S AESTHETIC QUALITIES. GENERALLY, CUT FROM EXPOSED SIDE INTO CONCEALED SPACES TO AVOID UNNECESSARY DAMAGE TO FINISH. DO NOT CUT AND PATCH IN A MANNER THAT WOULD RESULT IN SUBSTANTIAL VISUAL EVIDENCE OF CUT AND PATCH WORK. RESTORE EXPOSED FINISHES OF PATCHED AREAS IN A MANNER WHICH ELIMINATES EVIDENCE OF PATCHING AND REFINISHING. FOR CONTINUOUS SURFACES, EXTEND REFINISH TO NEAREST INTERSECTION, WITH A NEAT TRANSITION TO ADJACENT SURFACES.
 - b. PATCH AND REPAIR FLOOR AND WALL SURFACES IN THE NEW SPACE WHERE DEMOLISHED WALLS OR PARTITIONS EXTEND ONE FINISHED AREA INTO ANOTHER. PROVIDE A FLUSH AND EVEN SURFACE OF UNIFORM COLOR AND APPEARANCE. WHERE PATCHING SMOOTH PAINTED SURFACES, EXTEND FINAL PAINT COAT OVER ENTIRE UNBROKEN SURFACE CONTAINING THE PATCH TO AN INSIDE OR OUTSIDE CORNER, AFTER THE SURFACE HAS RECEIVED PRIMER AND SECOND COAT.
 - c. PATCH, REPAIR, OR REHANG EXISTING CEILINGS AS NECESSARY TO PROVIDE AN EVEN-PLANE SURFACE OF UNIFORM APPEARANCE WHERE ACCESS IS REQUIRED TO DO THE WORK AND A NEW CEILING IS NOT SCHEDULED.



GENERAL DEMOLITION NOTES

- REMOVE ALL CEILINGS AND CEILING GRIDS EXCEPT IN AREAS SHADED 
- REMOVE ALL VINYL BASE EXCEPT IN AREAS SHADED 
- REMOVE ALL CARPET
- REMOVE ALL PARTITIONS SHOWN DOTTED
- REMOVE ALL DOORS AND FRAMES SHOWN DOTTED (STORE AND/OR REUSE AS DIRECTED BY OWNER)
- REMOVE ALL BORROWED LITES SHOWN DOTTED
- REMOVE ALL PLUMBING FIXTURES & APPLIANCES SHOWN DOTTED
- REMOVE ALL CASEWORK SHOWN DOTTED

-	11-03-04	ISSUED FOR CONSTRUCTION
-	10-18-04	90% REVIEW
-	10-01-04	DD REVIEW
Mark	Date	Description
Issue Dates		

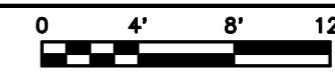
Drawing Status

Drawing Title
**SECOND FLOOR
DEMOLITION PLAN**

PA / PE: **PSC** Drawn By: **MED**

Drawing Number

A05.2

SECOND FLOOR DEMOLITION PLAN
1/8" = 1'-0"  REF: NA

A1