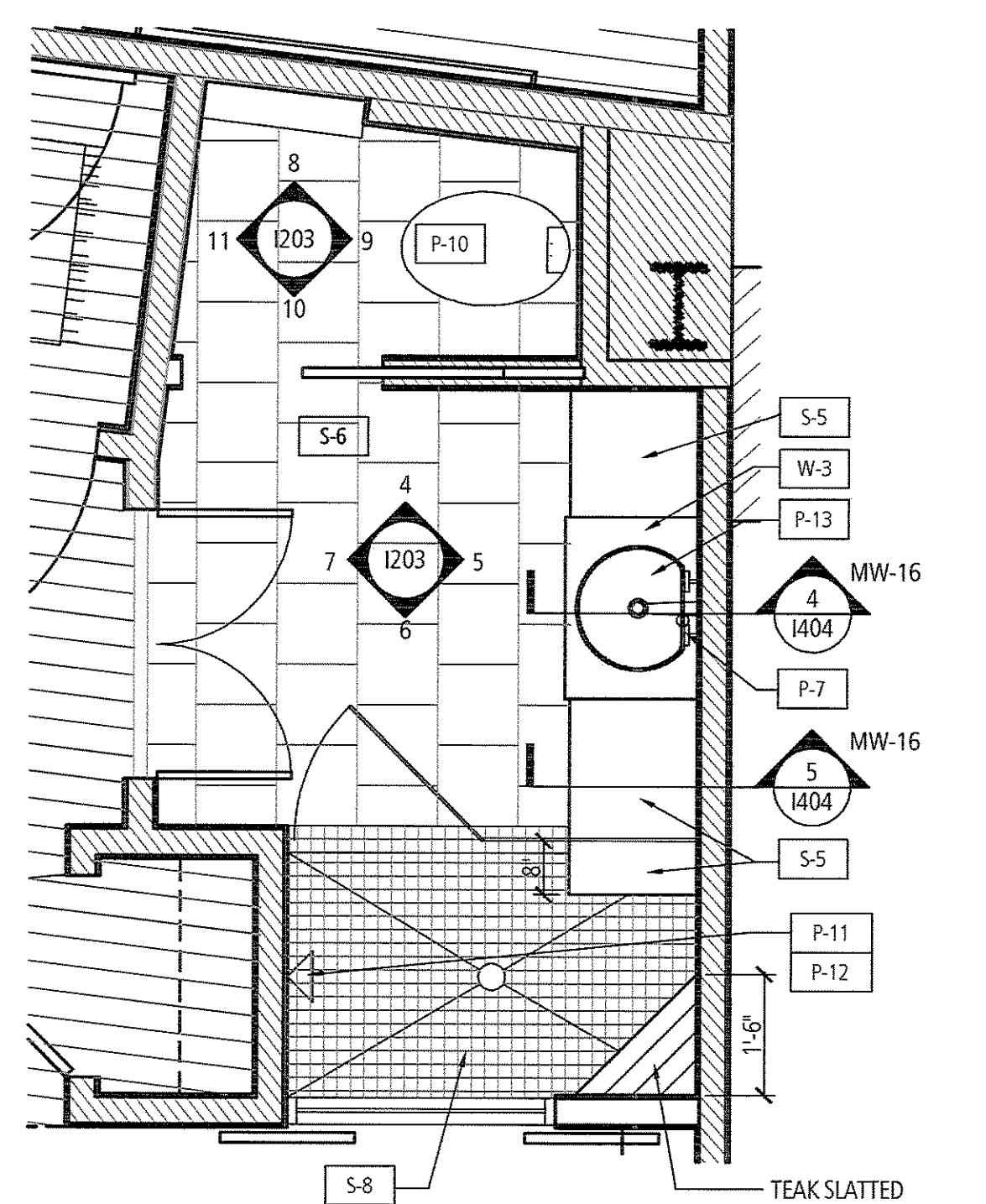
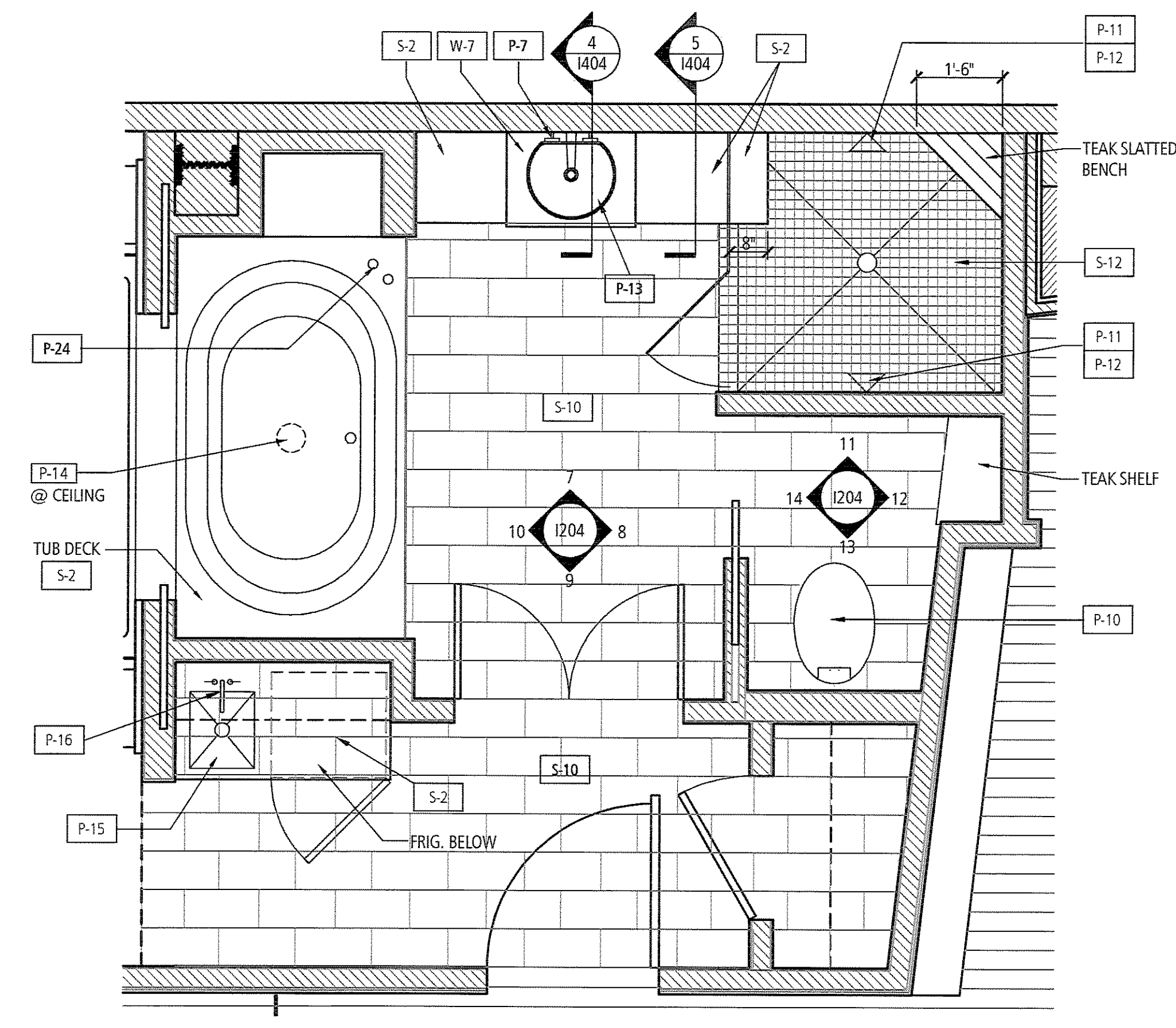


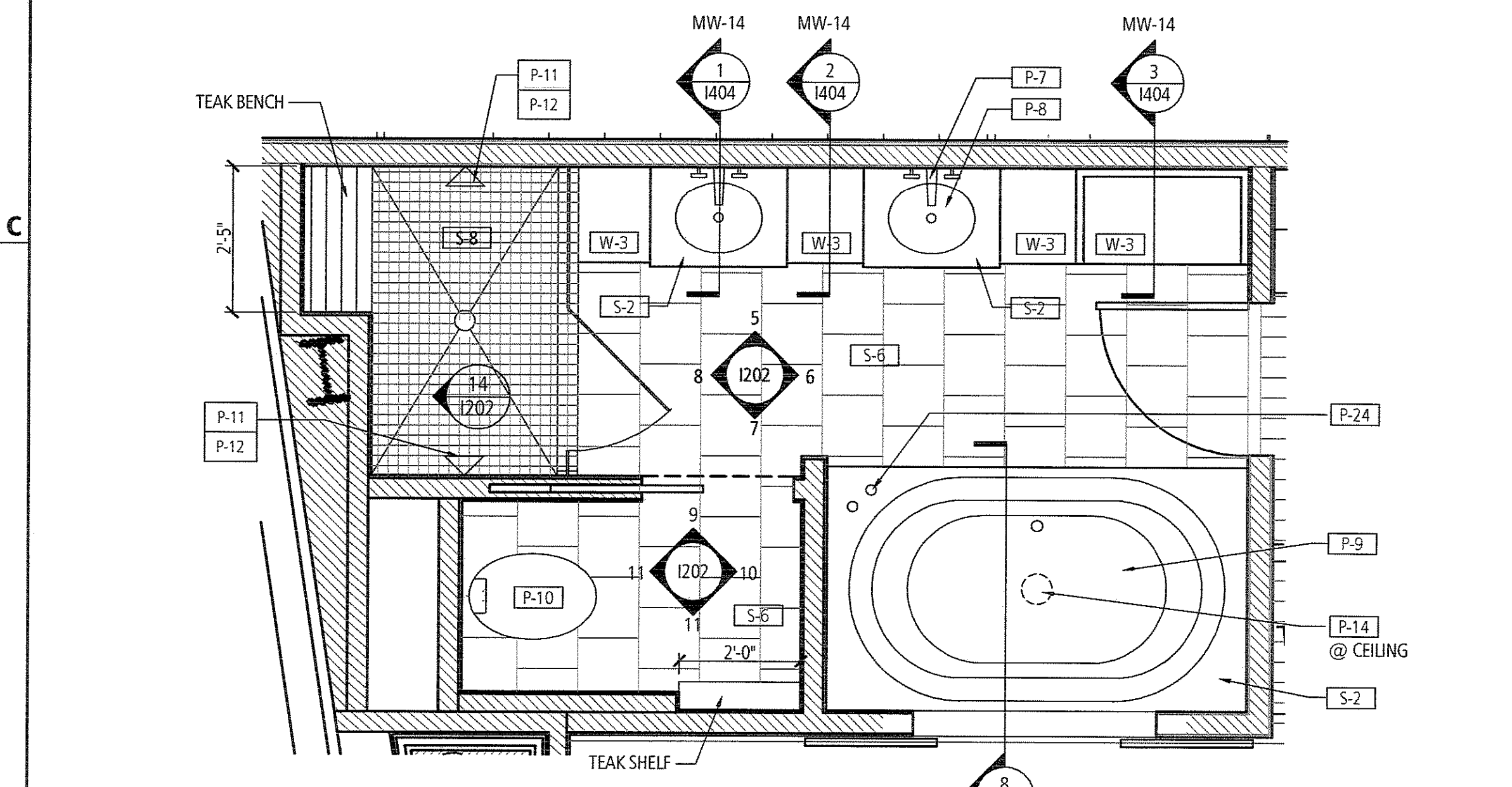
**1** First Floor Enlarged Bathroom Plan  
Scale: 3/8" = 1'-0"



**3** Executive Suite: Lockoff  
Enlarged Bathroom Plan 401B (3rd Floor Bathroom Similar)  
Scale: 1/2" = 1'-0"



**4** Honeymoon Suite  
Enlarged Bathroom Plan 402B (3rd Floor Bathroom Similar)  
Scale: 1/2" = 1'-0"



**2** Executive Suite: Master Bath  
Enlarged Bathroom Plan 400B (3rd Floor Bathroom Similar)  
Scale: 1/2" = 1'-0"

PLUMBING FIXTURE LEGEND								
TAG	PRODUCT	LOCATION	MANUFACTURER	ITEM NUMBER	DESCRIPTION	COLOR / FINISH	SIZE	NOTES
P-1	SINK	1ST FLR BATHROOMS	KOHLER	K-2214	LADENA UNDERCOUNTER LAVATORY	BISCUIT	18"x12"	
P-2	FAUCET	1ST FLR BATHROOMS	KOHLER	K-162324CP	MARGAUX 8" WIDESPREAD LAVATORY FAUCET	POLISHED CHROME		LEVER HANDLES
P-3	TOILET	1ST FLR BATHROOMS	KOHLER	K-4350	WELLCOMME BOWL	BISCUIT	26"x14-1/2"x14-3/4"	
P-4	HC TOILET	1ST FLR BATHROOMS	KOHLER	K-4302	HIGHCREST	BISCUIT	26"x14-1/2"x16-1/2"	
P-5	HC SINK, WALL MOUNTED	1ST FLR BATHROOMS	KOHLER	K-2053	SOHO WALL-MOUNT LAVATORY	BISCUIT	20"x18"	
P-6	URINAL	1ST FLR BATHROOMS	KOHLER	K-4960-ET	BARDON SUPERIOR URINAL	BISCUIT	18"x28"	
P-7	VANITY FAUCET	GUEST SUITE BATHRMS	KOHLER	K-T14414-3	PURIST WALL-MOUNTED FAUCET	BRUSHED CHROME	9"x8-1/2"	CROSS HANDLES
P-8	UNDERMOUNT SINK	GUEST SUITE BATHRMS	KOHLER	K-2210	CAXTON UNDERCOUNTER LAVATORY	BISCUIT	17"x14"	
P-9	TUB	GUEST SUITE BATHRMS	ZUMA	B7444	AIRBATH SYSTEM II	TO MATCH KOHLER BISCUIT FINISH	74"x44"x21"	
P-10	TOILET	GUEST SUITE BATHRMS	KOHLER	K-3492-6	PURIST HATBOX TOILET	BISCUIT		
P-11	SHOWER HEAD	GUEST SUITE BATHRMS	KOHLER	K-T14422-3	PURIST BATH AND SHOWER FAUCET TRIM	BRUSHED CHROME		
P-12	SHOWER VALVE	GUEST SUITE BATHRMS	KOHLER	K-306-KS-NA	PURIST SHOWER VALVE	BRUSHED CHROME		
P-13	VANITY SINK	GUEST SUITE BATHRMS	KOHLER	K-2332	WATERCOVE WADING POOL LAVATORY	BISCUIT	18-5/8"x16-13/16"	
P-14	TUB FILLER	GUEST SUITE BATHRMS	KOHLER	K-923	LAMINAR FLOW BATH SPOUT	BRUSHED CHROME		
P-15	BAR SINK	WET BAR	KOHLER	K-3339	UNDERTONE UNDERCOUNTER SINK	BRUSHED CHROME	11-1/2" DIA.	
P-16	BAR FAUCET	WET BAR	DORNBRACHT	33 500 325+11 170 325	FAUCET SINGLE LEVER MIXER, 5-1/8 PROJECTION	BRUSHED CHROME		
P-17	TOILET SEAT	1ST FLR BATHROOMS	KOHLER	K-4670	WELLCOMME/HIGHCREST TOILET SEAT	BISCUIT		
P-18	FLUSH VALVE FOR TOILET	1ST FLR BATHROOMS	KOHLER	K-10957CP	WELLCOMME/HIGHCREST FLUSH MOUNT	POLISHED CHROME		
P-19	FLUSH VALVE FOR URINAL	1ST FLR BATHROOMS	KOHLER	K-10960CP	BARDON FLUSH MOUNT	POLISHED CHROME		
P-20	TOILET PAPER HOLDER	1ST FLR BATHROOMS	KOHLER	K-16255	MARGAUX VERTICAL TOILET TISSUE HOLDER	POLISHED CHROME		
P-21	GRAB BAR	1ST FLR BATHROOMS	GINGER	1965	SYNCHRO	POLISHED CHROME	3'-0"	
P-22	FAUCET VALVE	GUEST SUITE BATHRMS	KOHLER	K-410-K	PURIST FAUCET VALVE	BRUSHED CHROME		
P-23	FAUCET STOP DRAIN	GUEST SUITE BATHRMS	KOHLER	K-7127-A	PURIST STOP DRAIN	BRUSHED CHROME		
P-24	FAUCET	GUEST SUITE BATHRMS	KOHLER	K-T14429-3	PURIST CROSS HANDLED DECKMOUNT FAUCET	BRUSHED CHROME		CROSS HANDLES
P-25	VALVE	GUEST SUITE BATHRMS	KOHLER	K-301-K-NA	LAMINAR TUB VALVE	BRUSHED CHROME		
P-26	TOWEL BAR	GUEST SUITE BATHRMS	KOHLER	K-14435	PURIST TOWEL BAR	BRUSHED CHROME	1'-6"	
P-27	ROBE HOOK	GUEST SUITE BATHRMS	KOHLER	K-14443	PURIST ROBE HOOK	BRUSHED CHROME		
P-28	TOILET TISSUE HOLDER	GUEST SUITE BATHRMS	KOHLER	K-14444	PURIST TOILET TISSUE HOLDER	BRUSHED CHROME		

**Drawing Submission**

Description	Date
95% CD SET	05 Feb, 2008

Portland Harbor Hotel  
**Renovation & Addition,  
Phase II**

Enlarged Bathroom Plans

Project number : 1730.00  
Date : 05 February, 2008  
Drawn by : CH  
Checked by :  
Project Phase :

**1401**  
Scale : As Noted