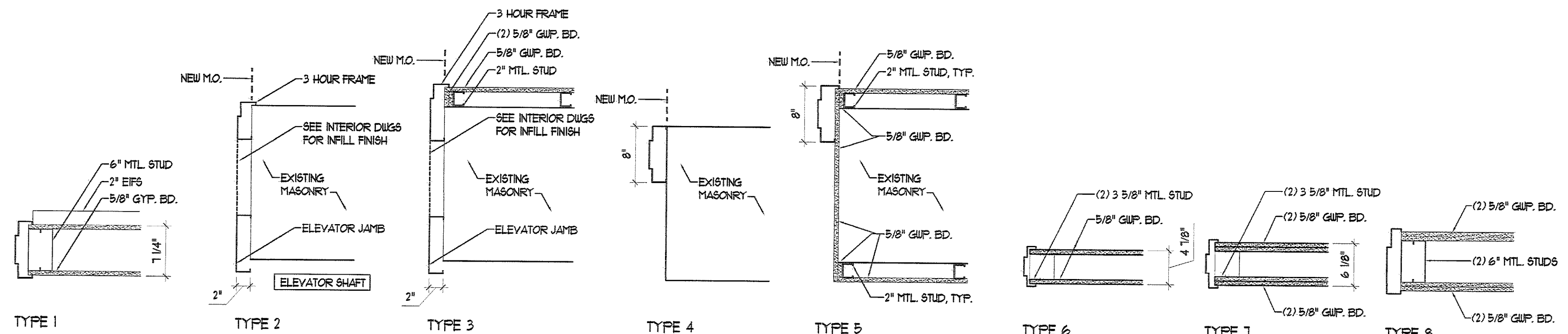
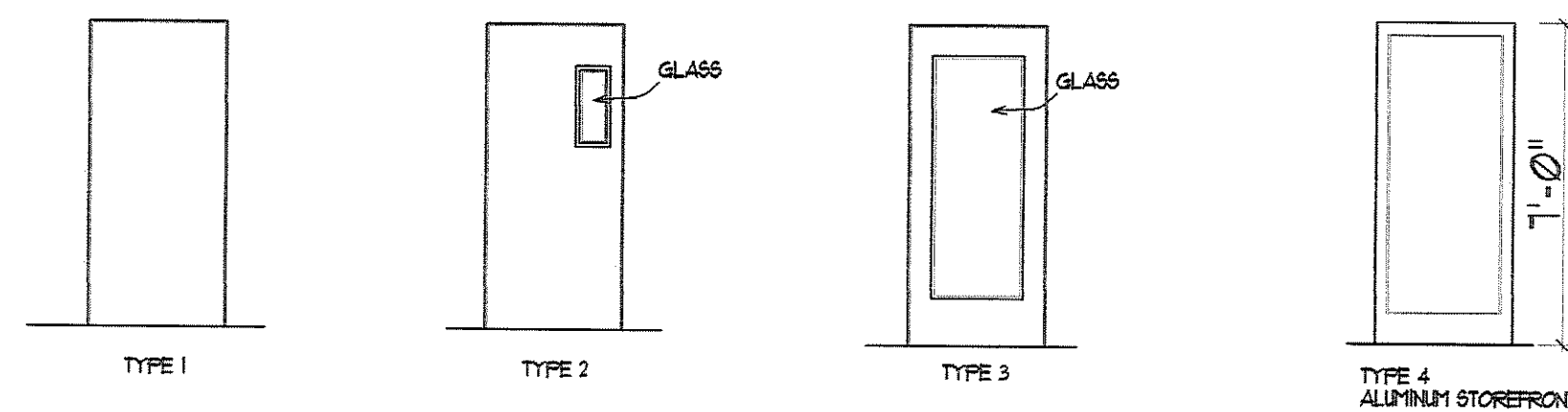


DOOR TYPES

SCALE: 1/4"=1'-0"



FRAME TYPES

SCALE: 1"=1'-0"

NOTES:
 AT 2ND AND 3RD FLOORS:
 ALL CORRIDOR DOORS ARE TO BE MAPLE, TYP.
 ALL HONEYMOON INTERIOR DOORS ARE TO BE MAPLE, TYP.
 ALL EXECUTIVE SUITE INTERIOR DOORS ARE TO BE GOLDEN WALNUT, TYP.

* DOOR SCHEDULE *

DOOR No.	LOCATION	SIZE	TYPE	MAT'L	FINISH	FRAME	FR. MTL.	THRESHOLD	LABEL	NOTES
002	SOUTH EXIT	3'-0" x 7'-0" x 1 3/4"	2	INSUL. METAL	PTD	1	METAL	ALUM.	-	WEATHERSTRIP
003	CORRIDOR 105	3'-0" x 7'-0" x 1 3/4"	1	METAL	PTD	5	METAL	-	3-HR	CLOSER, SMOKE SEAL
004	ELEVATOR	3'-8" x 7'-0" x 1 3/4"	1	METAL	PTD	3	METAL	-	3-HR	CLOSER, SMOKE SEAL, HOLDBACK, PASSAGE
007	STAIR ONE	3'-0" x 7'-0" x 1 3/4"	2	METAL	PTD	7	METAL	-	1-1/2 HR	CLOSER, SMOKE SEAL
008	ELEV. MACH. RM.	3'-0" x 7'-0" x 1 3/4"	1	METAL	PTD	7	METAL	-	1-1/2 HR	
009	SPA	3'-0" x 7'-0" x 1 3/4"	D-2	W-14	STAIN	-	WOOD	-	-	
010	SPA	3'-0" x 7'-0" x 1 3/4"	D-2	W-14	STAIN	-	-	-	-	
012	SPA WAITING	3'-0" x 7'-0" x 1 3/4"	4	ALUM	ANNOD.	-	ALUM	-	-	ALUM STOREFRONT
013	FITNESS RM.	3'-0" x 7'-0" x 1 3/4"	4	ALUM	ANNOD.	-	ALUM	-	-	ALUM STOREFRONT
014	WOMENS	3'-0" x 7'-0" x 1 3/4"	D-1	W-14	STAIN	-	WOOD	-	-	
015	WOMENS ENTRY	3'-0" x 7'-0" x 1 3/4"	D-1	W-14	STAIN	-	WOOD	-	-	
016	MENS ENTRY	3'-0" x 7'-0" x 1 3/4"	D-1	W-14	STAIN	-	WOOD	-	-	
017	MENS	3'-0" x 7'-0" x 1 3/4"	D-1	W-14	STAIN	-	WOOD	-	-	
018	SPA FIRE DOOR	3'-0" x 7'-0" x 1 3/4"	1	METAL	PTD	3	METAL	-	3-HR	CLOSER, SMOKE SEAL, HOLDBACK, PASSAGE
101	CORRIDOR 201	3'-0" x 7'-0" x 1 3/4"	1	METAL	PTD	5	METAL	-	3-HR	CLOSER, SMOKE SEAL
102	ELEVATOR	3'-8" x 7'-0" x 1 3/4"	1	METAL	PTD	3	METAL	-	3-HR	CLOSER, SMOKE SEAL, HOLDBACK, PASSAGE
103	STAIR ONE	3'-0" x 7'-0" x 1 3/4"	2	METAL	PTD	7	METAL	-	1-1/2 HR	CLOSER, SMOKE SEAL
104	STAIR ONE	3'-0" x 7'-0" x 1 3/4"	2	METAL	PTD	7	METAL	-	1-1/2 HR	CLOSER, SMOKE SEAL
105	RETAIL 200	3'-0" x 7'-0" x 1 3/4"	4	ALUM	ANNOD.	-	ALUM	-	20 MIN	ALUM STOREFRONT, SMOKE SEAL, FIRELITE GLASS
106	ENTRY VESTIBULE	3'-0" x 7'-0" x 1 3/4"	4	ALUM	ANNOD.	-	ALUM	ALUM.	-	CLOSER, WEATHERSTRIP
107	WOOD STOREFRONT	CUSTOM	CUSTOM	MAHOG.	PTD	-	MAHOG.	MAHOG.	-	CLOSER, WEATHERSTRIP
108	WOOD STOREFRONT	CUSTOM	CUSTOM	MAHOG.	PTD	-	MAHOG.	MAHOG.	-	CLOSER, WEATHERSTRIP
203	STAIR TWO	3'-0" x 7'-0" x 1 3/4"	1	METAL	PTD	5	METAL	-	3-HR	CLOSER, SMOKE SEAL
204	ELEVATOR	3'-8" x 7'-0" x 1 3/4"	1	METAL	PTD	3	METAL	-	3-HR	CLOSER, SMOKE SEAL, HOLDBACK, PASSAGE
206	STAIR ONE	3'-0" x 7'-0" x 1 3/4"	2	METAL	PTD	7	METAL	-	1-1/2 HR	CLOSER, SMOKE SEAL
300	CONFERENCE 300	(2)3'-0" x 7'-0" x 1 3/4"	D-3	WOOD	PTD	-	WOOD	-	20 MIN	180 DEG. HINGES, PANIC HARDWARE
301-A	CONFERENCE 300	3'-0" x 7'-0" x 1 3/4"	D-3	WOOD	PTD	-	WOOD	-	20 MIN	PANIC HARDWARE
305-A	WOMEN 305	3'-0" x 7'-0" x 1 3/4"	D-2	W-14	ST	-	W-14	-	20 MIN	
305-B	WOMEN 305	2'-6" x 7'-0" x 1 3/4"	D-1	W-14	ST	-	W-14	-	-	
305-C	WOMEN 305	2'-6" x 7'-0" x 1 3/4"	D-1	W-14	ST	-	W-14	-	-	
305-D	WOMEN 305	2'-6" x 7'-0" x 1 3/4"	D-1	W-14	ST	-	W-14	-	-	
305-E	WOMEN 305	2'-6" x 7'-0" x 1 3/4"	D-1	W-14	ST	-	W-14	-	-	
306-A	MEN 306	3'-0" x 7'-0" x 1 3/4"	D-2	W-14	ST	-	W-14	-	20 MIN	
306-B	MEN 306	2'-6" x 7'-0" x 1 3/4"	D-1	W-14	ST	-	W-14	-	-	
306-C	MEN 306	2'-6" x 7'-0" x 1 3/4"	D-1	W-14	ST	-	W-14	-	-	
306-D	MEN 306	2'-6" x 7'-0" x 1 3/4"	D-1	W-14	ST	-	W-14	-	-	
307	OFFICE WAITING	3'-0" x 7'-0" x 1 3/4"	D-2	W-14	ST	-	W-14	-	20 MIN	
307-A	OFFICE MEETING	3'-0" x 7'-0" x 1 3/4"	3	W-14	ST	-	W-14	-	-	
307-B	OFFICE	3'-0" x 7'-0" x 1 3/4"	3	W-14	ST	-	W-14	-	-	
307-C	OFFICE	3'-0" x 7'-0" x 1 3/4"	3	W-14	ST	-	W-14	-	-	
301	STAIR FOUR	3'-0" x 7'-0" x 1 3/4"	1	METAL	PTD	5	METAL	-	3-HR	CLOSER, SMOKE SEAL
305	STAIR THREE	3'-0" x 7'-0" x 1 3/4"	1	METAL	PTD	5	METAL	-	3-HR	CLOSER, SMOKE SEAL
306	ELEVATOR	3'-8" x 7'-0" x 1 3/4"	1	METAL	PTD	3	METAL	-	3-HR	CLOSER, SMOKE SEAL, HOLDBACK, PASSAGE
308	STAIR ONE	3'-0" x 7'-0" x 1 3/4"	2	METAL	PTD	7	METAL	-	1-1/2 HR	CLOSER, SMOKE SEAL
400	VESTIBULE 400	3'-0" x 7'-8" x 1 3/4"	D-4	W-10	ST	-	W-10	-	20 MIN	
400-1	VESTIBULE 400	3'-0" x 7'-8" x 1 3/4"	D-4	W-11	ST	-	W-11	-	-	
400-2	MASTER BATH 400-B	2'-6" x 7'-8" x 1 3/4"	D-6	W-11 GLASS	ST/FROSTED	-	W-11	-	-	
400-3	MASTER BATH 400-B	2'-4" x 7'-9" x 1 1/2"	D-5	GLASS	FROSTED	-	-	-	-	
400-4	MASTER BATH 400-B	2'-6" x 7'-8" x 1 3/4"	D-7	W-11 GLASS	ST/FROSTED	-	W-11	-	-	POCKET HARDWARE
400-5	MASTER BATH 400-B	(2)2'-0" x 7'-9" x 1 3/4"	D-8	W-11 GLASS	ST/FROSTED	-	-	-	-	SLIDING HARDWARE
400-6	EXECUTIVE STE. 400A	(2)2'-0" x 7'-8" x 1 3/4"	D-10	W-11	ST	-	W-11	-	-	
401-0	BEDROOM 401A	3'-0" x 7'-8" x 1 3/4"	D-4	W-11	ST	-	W-11	-	-	
401-1	BATHROOM 401B	2'-6" x 7'-8" x 1 3/4"	D-7	W-11 GLASS	ST/FROSTED	-	W-11	-	-	POCKET HARDWARE
401-2	BATHROOM 401B	(2)1'-8" x 7'-8" x 1 3/4"	D-11	W-11 GLASS	ST/FROSTED	-	W-11	-	-	
401-3	BATHROOM 401B	2'-4" x 7'-9" x 1 1/2"	D-5	GLASS	FROSTED	-	-	-	-	
401-4	CLOSET 401C	2'-6" x 7'-8" x 1 3/4"	D-4	W-11	ST	-	W-11	-	-	
401-5	BEDROOM 401A	(2)1'-8" x 7'-9" x 1 3/4"	D-10	W-11 GLASS	ST/CLEAR	-	-	-	-	
402	HONEYMOON STE 402A	3'-0" x 7'-8" x 1 3/4"	D-4	W-10	ST	-	W-10	-	20 MIN	
402-1	CLOSET 402C	2'-6" x 7'-8" x 1 3/4"	D-4	W-10	ST	-	W-10	-	-	
402-2	BATHROOM 402B	(2)2'-0" x 7'-8" x 1 3/4"	D-12	W-10	ST	-	W-10	-	-	
402-3	BATHROOM 402B	2'-6" x 7'-8" x 1 3/4"	D-7	W-10 GLASS	ST/FROSTED	-	W-10	-	-	POCKET HARDWARE
402-4	BATHROOM 402B	2'-4" x 7'-9" x 1 1/2"	D-5	GLASS	FROSTED	-	-	-	-	
402-5	BATHROOM 402B	(2)2'-0" x 7'-9" x 1 3/4"	D-15	W-10 GLASS	ST/FROSTED	-	-	-	-	SLIDING HARDWARE
401	STAIR FOUR	3'-0" x 7'-0" x 1 3/4"	1	METAL	PTD	5	METAL	-	3-HR	CLOSER, SMOKE SEAL
405	ELEVATOR	3'-8" x 7'-0" x 1 3/4"	1	METAL	PTD	3	METAL	-	3-HR	CLOSER, SMOKE SEAL, HOLDBACK, PASSAGE
406	STAIR ONE	3'-0" x 7'-0" x 1 3/4"	1	METAL	PTD	3	METAL	-	3 HR	CLOSER, SMOKE SEAL
407	STAIR ONE	3'-0" x 7'-0" x 1 3/4"	1	METAL	PTD	7	METAL	ALUM	1-1/2 HR	CLOSER, WEATHERSTRIP

OWNER: **468 FORE STREET REALTY LLC**
 FORE STREET PORTLAND, ME 04101

ARCHETYPE, P.A. ARCHITECTS
 48 Union Wharf Portland, Maine 04101
 (207) 772-6022 Fax (207) 772-4056

Project: **468 Fore Street Interiors**
 468-470 FORE STREET PORTLAND, MAINE

Scale: **AS NOTED**

Date: **17 March 2008**

Revisions:

DOOR SCHEDULE

A7.10