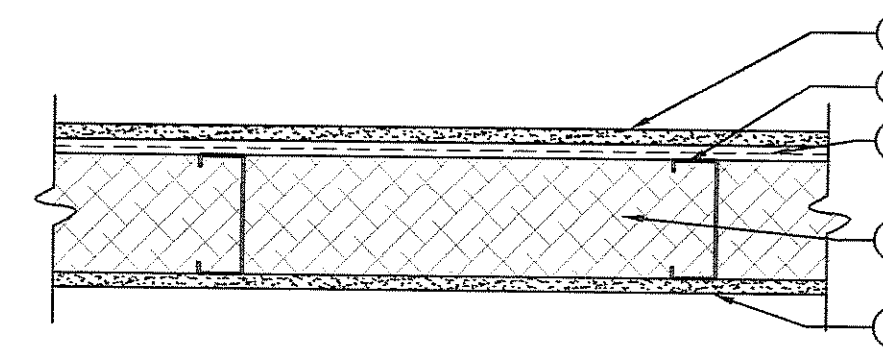
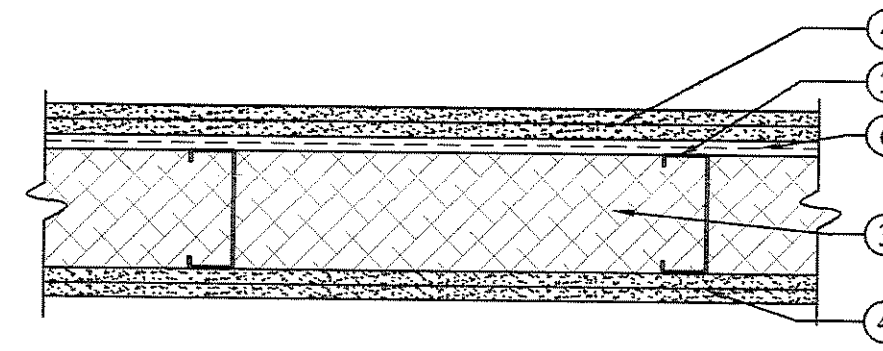


WALL TYPES

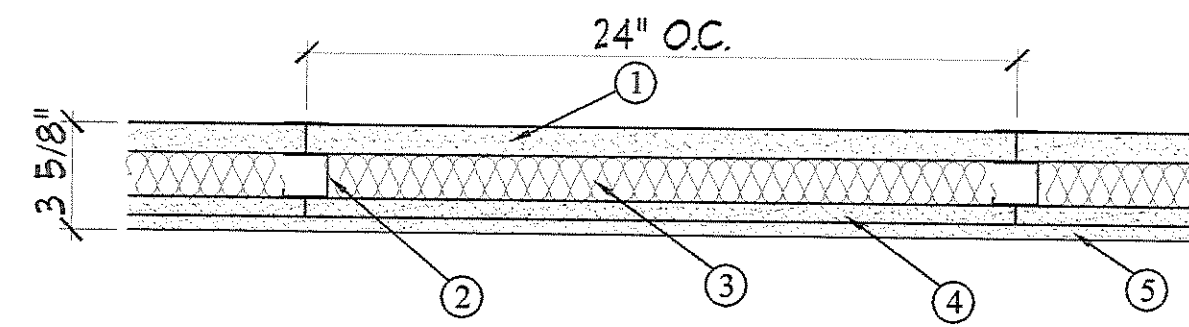
WALL TYPES



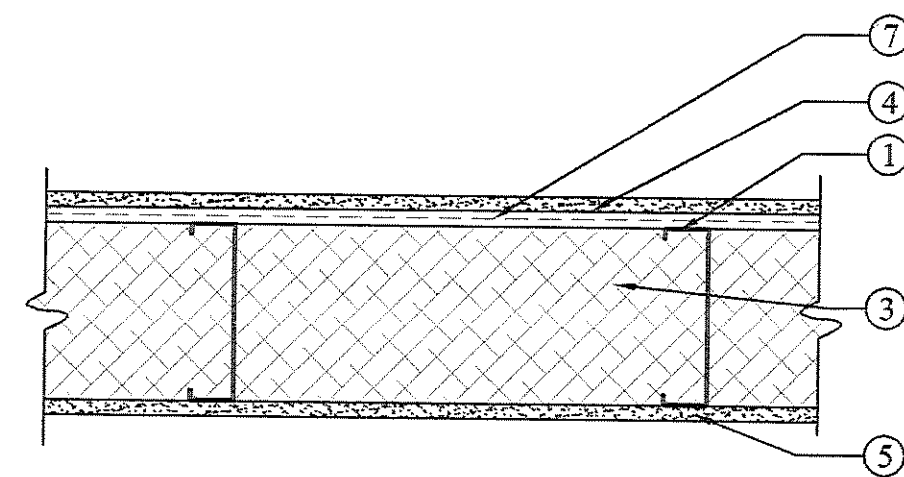
W2 1 HOUR CORRIDOR WALL
1/2 HOUR REQUIRED



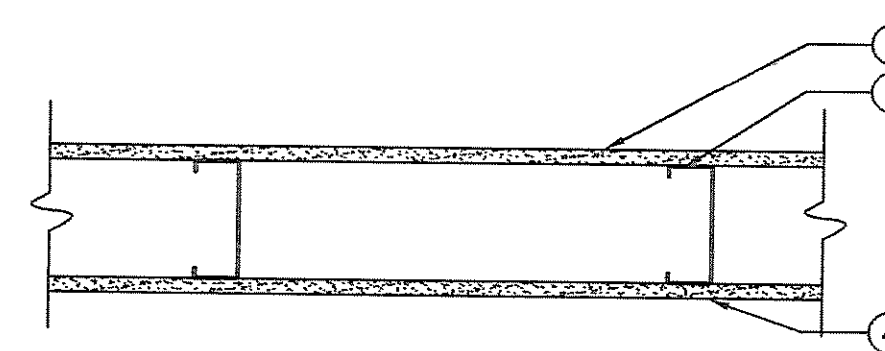
W4 1 HOUR DWELLING UNIT PARTY WALL



W6 2 HOUR NON-BEARING
SHAFT WALL



W11 UNRATED PLUMBING WALL



W12 UNRATED WALL

W2 1 HOUR CORRIDOR / NON-BEARING WALL ASSEMBLY
UL Design U451 - 1 HOUR FIRE - 50 to 54 STC SOUND
Fire Resistance Ratings - ANSUL 263
Sound Test: RAL TL83-216, 47 MTC
GYPSUM WALLBOARD, STEEL STUDS (NON-LOADBEARING)

1. Studs - Channel-shaped, 3-5/8 in. 20 gauge galvanized steel studs. Max stud spacing 24 in. OC (See Structural). Studs to be cut 1 in. less than assembly height.
2. Floor and Ceiling Runners (Not Shown) - Channel-shaped runners, 4 in. wide by 1-1/4 in. deep, fabricated from No. 20 MSG galv steel. Attached to floor and ceiling with fasteners, 24 in. OC, max.
3. Resilient Channel - 25 MSG galv steel resilient channels spaced vertically max 24 in. OC, flange portion attached to each intersecting stud with 1/2 in. long Type S-12 pan head steel screws.
4. Fiber, Sprayed - Spray applied cellulose material. The fiber is applied with water to completely fill the enclosed cavity in accordance with the application instructions supplied with the product. Nominal dry density of 3.0 lb/ft³. Alternate application method: The fiber is applied with U.S. Greenfiber LLC Type AD100 hot melt adhesive at a nominal ratio of one part adhesive to 6.6 parts fiber to completely fill the enclosed cavity in accordance with the application instructions supplied with the product. Nominal dry density of 2.5 lb/ft³.
5. Gypsum Board - 1/2 in. thick, 4 ft wide. Screw attached one side to resilient or furring channels with 1 in. long, Type S steel screws spaced 12 in. OC. Wallboard on direct attached side secured to studs with 1 in. long Type S-12 steel screws spaced 12 in. Wallboard joints oriented vertically, located over studs and offset between layers.
6. Joint Tape and Compound - Vinyl, dry or premixed joint compound, applied to joints and screw heads; paper tape, 2 in. wide, embedded in first layer of compound over all joints. As an alternate, nom 3/32 in. thick gypsum veneer plaster may be applied to the entire surface of Classified veneer baseboard. Joints reinforced.
7. Caulking and Sealants - (Not shown) - A bead of acoustical sealant applied around the partition perimeter for sound control.
UNITED STATES GYPSUM CO - Type AS.

W4 1 HOUR DWELLING UNIT NON-BEARING WALL ASSEMBLY
UL Design U465 - 1 HOUR FIRE - 60 STC SOUND
Fire Resistance Ratings - ANSUL 263
Sound Test: Riverbank Acoustical Laboratories, NU-Wool Company
GYPSUM WALLBOARD, STEEL STUDS (NON-LOADBEARING)

1. Floor and Ceiling Runners - (not shown) - Channel shaped runners, 3-5/8 in. wide (min), 1-1/4 in. legs, formed from min No. 25 MSG galv steel, attached to floor and ceiling with fasteners spaced 24 in. OC max.
2. Steel Studs - Channel shaped, 3-5/8 in. wide (min), 1-1/4 in. legs, 3/8 in. folded back returns, formed from min No. 25 MSG galv steel spaced 24 in. OC max.
3. Fiber, Sprayed - As an alternate to Batts and Blankets (Item 3) - Spray applied cellulose material. The fiber is applied with water to completely fill the enclosed cavity in accordance with the application instructions supplied with the product. Nominal dry density of 3.0 lb/ft³. Alternate application method: The fiber is applied with U.S. Greenfiber LLC Type AD100 hot melt adhesive at a nominal ratio of one part adhesive to 6.6 parts fiber to completely fill the enclosed cavity in accordance with the application instructions supplied with the product. Nominal dry density of 2.5 lb/ft³.
4. Gypsum Board - Double layer 5/8 in. thick (SECOND LAYER ADDED FOR SOUND), 4 ft wide, attached to steel studs and floor and ceiling track with 1 in. long, Type S steel screws spaced 8 in. OC, along edges of board and 12 in. OC in the field of the board. Joints oriented vertically and staggered on opposite sides of the assembly. When attached to item 6 (resilient channels), wallboard is screw attached to furring channels with 1 in. long, Type S steel screws spaced 12 in. OC.
5. Joint Tape and Compound - Vinyl, dry or premixed joint compound, applied in two coats to joints and screw heads; paper tape, 2 in. wide, embedded in first layer of compound over all joints. As an alternate, nominal 3/32 in. thick gypsum veneer plaster may be applied to the entire surface of Classified veneer baseboard. Joints reinforced. Paper tape and joint compound may be omitted when gypsum boards are supplied with square edges.
6. Resilient Channel - 25 MSG galv steel resilient channels spaced vertically max 24 in. OC, flange portion attached to each intersecting stud with 1/2 in. long type S-12 panhead steel screws.

W6 2 HR. NON-BEARING SHAFT WALL ASSEMBLY 45 to 49 STC
G.A. FILE NO. WP7083
Fire Test: WHI 495-0569, 11-4-83; 495-0570, 11-7-83
Sound Test: WEAL 84-108, 3-16-84

1. One layer 1" x 24" proprietary type X gypsum panels
2. Gypsum inserted between 2-1/2" floor and ceiling J runners with H section of 2-1/2" 20 gage proprietary vented C-H steel studs between panels.
3. 1-1/2" mineral fiber insulation in stud space.
4. Base layer 5/8" proprietary type X gypsum wallboard applied parallel to studs with 1" long Type S-12 drywall screws 24" o.c.
5. Face layer 1/2" proprietary cementitious backer units applied parallel or at right angles to studs with 1-5/8" long Type S-12 wafer head screws spaced 8" o.c. and 4" wide strips of ANSI A136.1 Type 'V' organic adhesive midway between studs applied using a 1/4" notched trowel. Joints offset from base layer joints.

(NLB)
PROPRIETARY GYPSUM BOARD
- United States Gypsum Company - 5/8" SHEETROCK® Brand Gypsum Panels, 'FIRECODE' Core
- 1" SHEETROCK® Brand Gypsum Liner Panels

W11 UNRATED NON-BEARING WALL ASSEMBLY

1. Studs - Channel-shaped, 6 in. 20 gauge galvanized steel studs. Max stud spacing 24 in. OC.
2. Floor and Ceiling Runners (Not Shown) - Channel-shaped runners, 6 in. wide by 1-1/4 in. deep, fabricated from No. 20 MSG galv steel. Attached to floor and ceiling with fasteners, 24 in. OC, max.
3. Fiber, Sprayed - Spray applied cellulose material. The fiber is applied with water to completely fill the enclosed cavity in accordance with the application instructions supplied with the product. Nominal dry density of 3.0 lb/ft³. Alternate application method: The fiber is applied with U.S. Greenfiber LLC Type AD100 hot melt adhesive at a nominal ratio of one part adhesive to 6.6 parts fiber to completely fill the enclosed cavity in accordance with the application instructions supplied with the product. Nominal dry density of 2.5 lb/ft³.
4. Gypsum Board - 5/8 in. thick, 4 ft wide. Screw attached one side with 1 in. long Type S-12 steel screws spaced 12 in. Wallboard joints oriented vertically, located over studs and offset between layers.
5. Joint Tape and Compound - Vinyl, dry or premixed joint compound, applied to joints and screw heads; paper tape, 2 in. wide, embedded in first layer of compound over all joints. As an alternate, nom 3/32 in. thick gypsum veneer plaster may be applied to the entire surface of Classified veneer baseboard. Joints reinforced.
6. Caulking and Sealants - (Not shown) - A bead of acoustical sealant applied around the partition perimeter for sound control.
7. Resilient Channel - 25 MSG galv steel resilient channels spaced vertically max 24 in. OC, flange portion attached to each intersecting stud with 1/2 in. long Type S-12 pan head steel screws.

UNITED STATES GYPSUM CO - Type AS.

W12 UNRATED NON-BEARING WALL ASSEMBLY

1. Studs - Channel-shaped, 3-5/8 in. 20 gauge galvanized steel studs. Max stud spacing 24 in. OC (See Structural). Studs to be cut 1 in. less than assembly height.
2. Floor and Ceiling Runners (Not Shown) - Channel-shaped runners, 4 in. wide by 1-1/4 in. deep, fabricated from No. 20 MSG galv steel. Attached to floor and ceiling with fasteners, 24 in. OC, max.
3. Gypsum Board - 1/2 in. thick, 4 ft wide. Screw attached one side to resilient or furring channels with 1 in. long, Type S steel screws spaced 12 in. OC. Wallboard on direct attached side secured to studs with 1 in. long Type S-12 steel screws spaced 12 in. Wallboard joints oriented vertically, located over studs and offset between layers.
4. Joint Tape and Compound - Vinyl, dry or premixed joint compound, applied to joints and screw heads; paper tape, 2 in. wide, embedded in first layer of compound over all joints. As an alternate, nom 3/32 in. thick gypsum veneer plaster may be applied to the entire surface of Classified veneer baseboard. Joints reinforced.

UNITED STATES GYPSUM CO - Type AS.

OWNER:
468 FORE STREET
REALTY LLC
FORE STREET
PORTLAND, ME 04101

ARCHETYPE, P.A.
ARCHITECTS
48 Union Wharf Portland, Maine 04101
(207) 772-6022 Fax (207) 772-4056

Project:
468 Fore Street Interiors
468-470 FORE STREET
PORTLAND, MAINE

Project:

Revisions:

Date 17 March 2008

Scale Not to Scale

WALL ASSEMBLIES

A4.10