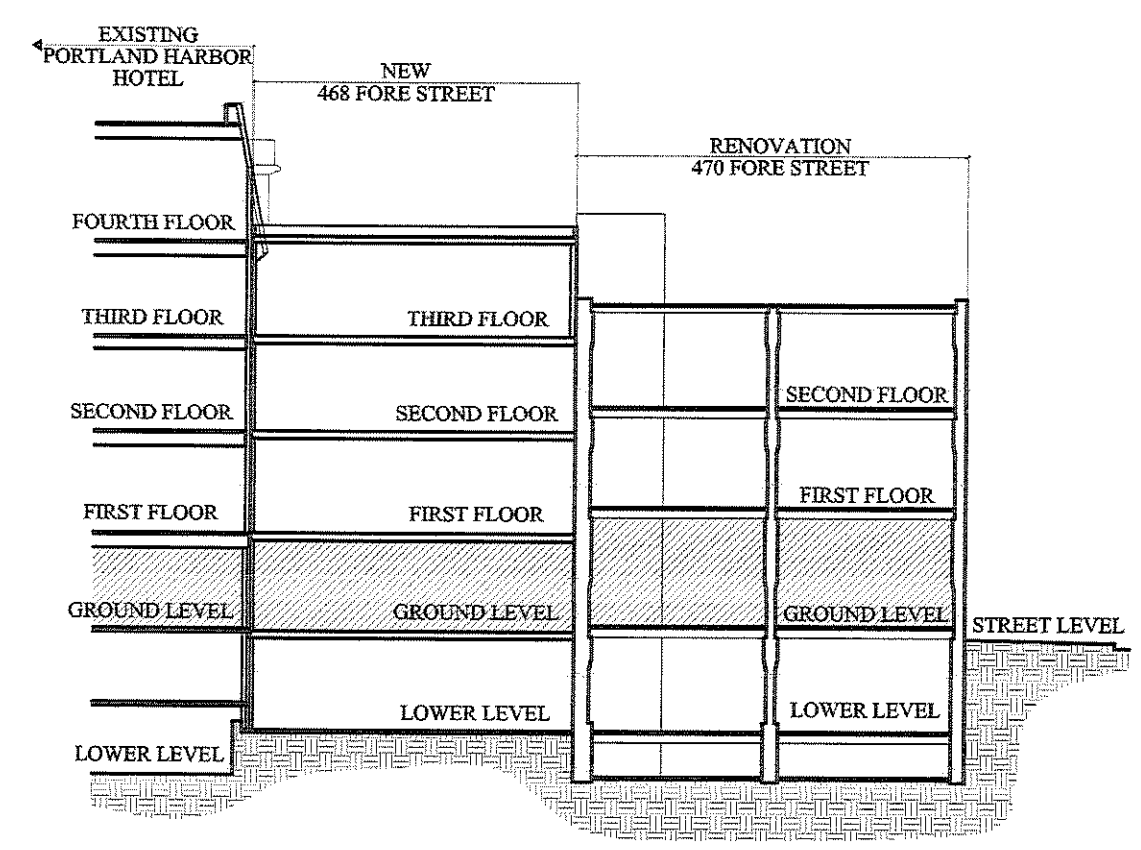


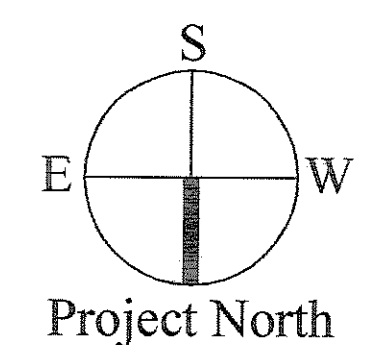
2 | GROUND LEVEL FLOOR PLAN
SCALE: 1/4" = 1'-0"

KEY SECTION



LEGEND

| | |
|--------------------------------------|--|
| NEW WALL - STUD & GYP. BD. | |
| NEW WALL - 2-HOUR SEPARATION | |
| NEW MASONRY INFILL | |
| NEW CONCRETE FNDTN/RETAINING WALL | |
| EXISTING WALL | |
| (A) = ADDITION (468 FORE ST.) | |
| (R) = RENOVATION (470 FORE ST.) | |
| BUILDING SECTION | |
| WALL SECTION | |
| SECTION DETAIL | |
| PLAN DETAIL | |
| WALL TYPE (SEE SHEET A4.00) | |
| FLOOR/CEILING TYPE (SEE SHEET A4.00) | |



OWNER:
468 FORE STREET REALTY LLC
FORE STREET
PORTLAND, ME 04101

ARCHETYPE, P.A. ARCHITECTS
48 Union Wharf Portland, Maine 04101
(207) 772-6022 Fax (207) 772-4056

Project:
468 Fore Street Interiors
468-470 FORE STREET
PORTLAND, MAINE

Revisions:

| | |
|--|--|
| | |
| | |
| | |

Date: 17 March 2008
Scale: 1/4" = 1'-0"
GROUND LEVEL INTERIOR

A1.20