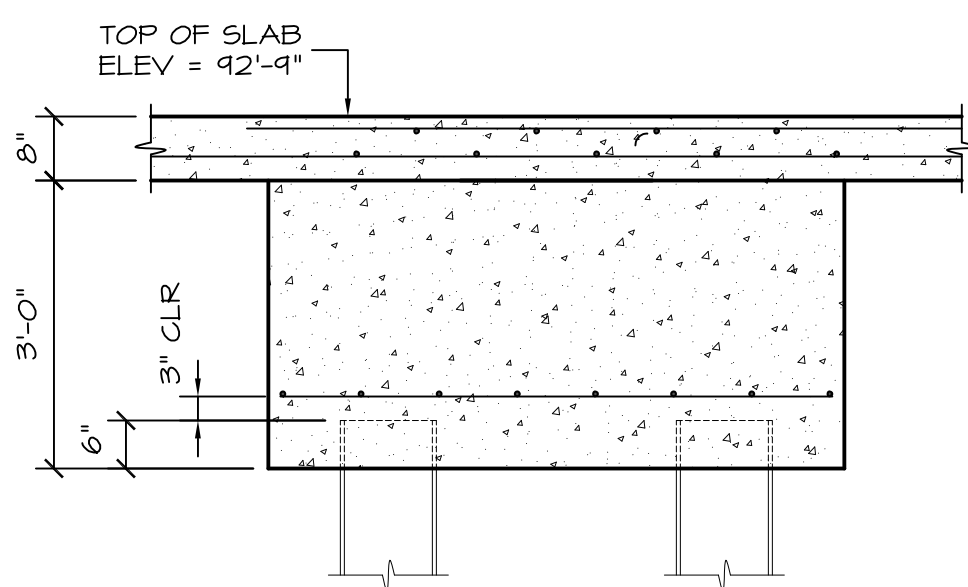


GRADE BEAM SECTION
1/2"=1'-0"

NOTE - GRADE BEAM AT GRID 4 LOWERED 1'-4". SEE 50.

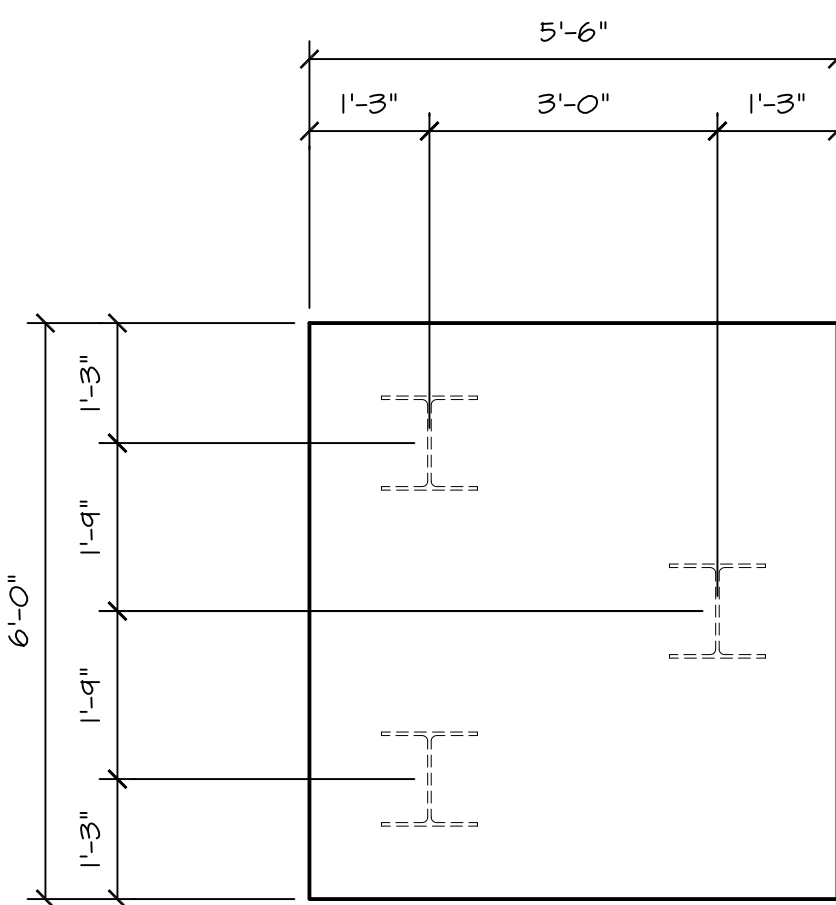
GRADE BEAM SCHEDULE					
MARK	WIDTH	DEPTH	TOP BARS	BOT BARS	STIRRUPS
GB1	1'-8"	3'-0"	(7) #6	(7) #6	#3 @ 12"
GB2	2'-2"	3'-0"	(12) #8	(7) #6	#3 @ 4"
GB3	3'-0"	3'-0"	(7) #6	(7) #6	#3 @ 12"

ALL BOTTOM BARS STOP AT FACE OF PILE CAP
 GB1 TOP BARS:
 CONTINUOUS OVER INTERIOR PILE CAPS
 1'-6" BEYOND FACE OF EXTERIOR PILE CAPS
 GB2 GB3 TOP BARS:
 5'-0" BEYOND FACE OF PILE CAP.
 BEND INTO ADJACENT GB AS REQUIRED



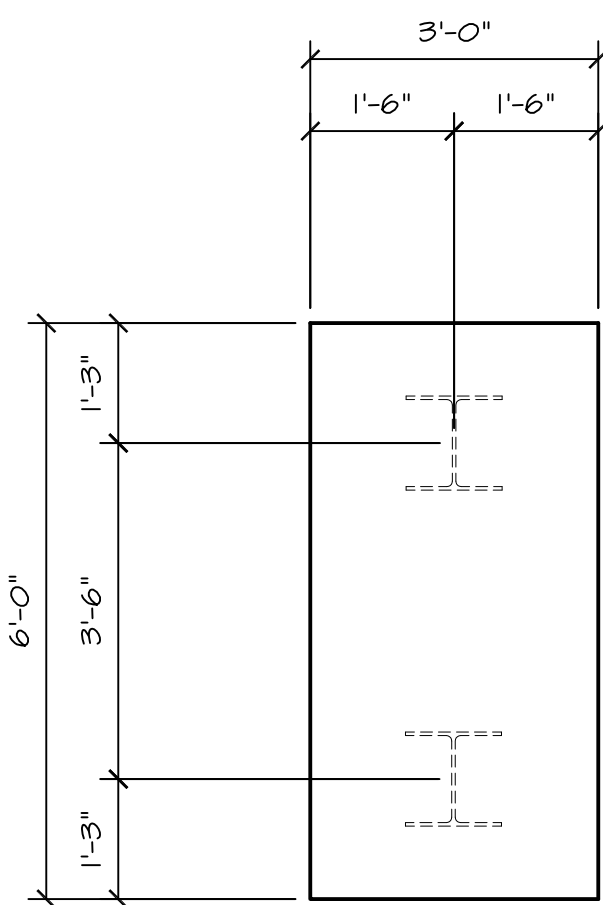
PILE CAP SECTION
1/2"=1'-0"

NOTE - PILE CAPS AT GRID 4 LOWERED 1'-4". SEE 50.



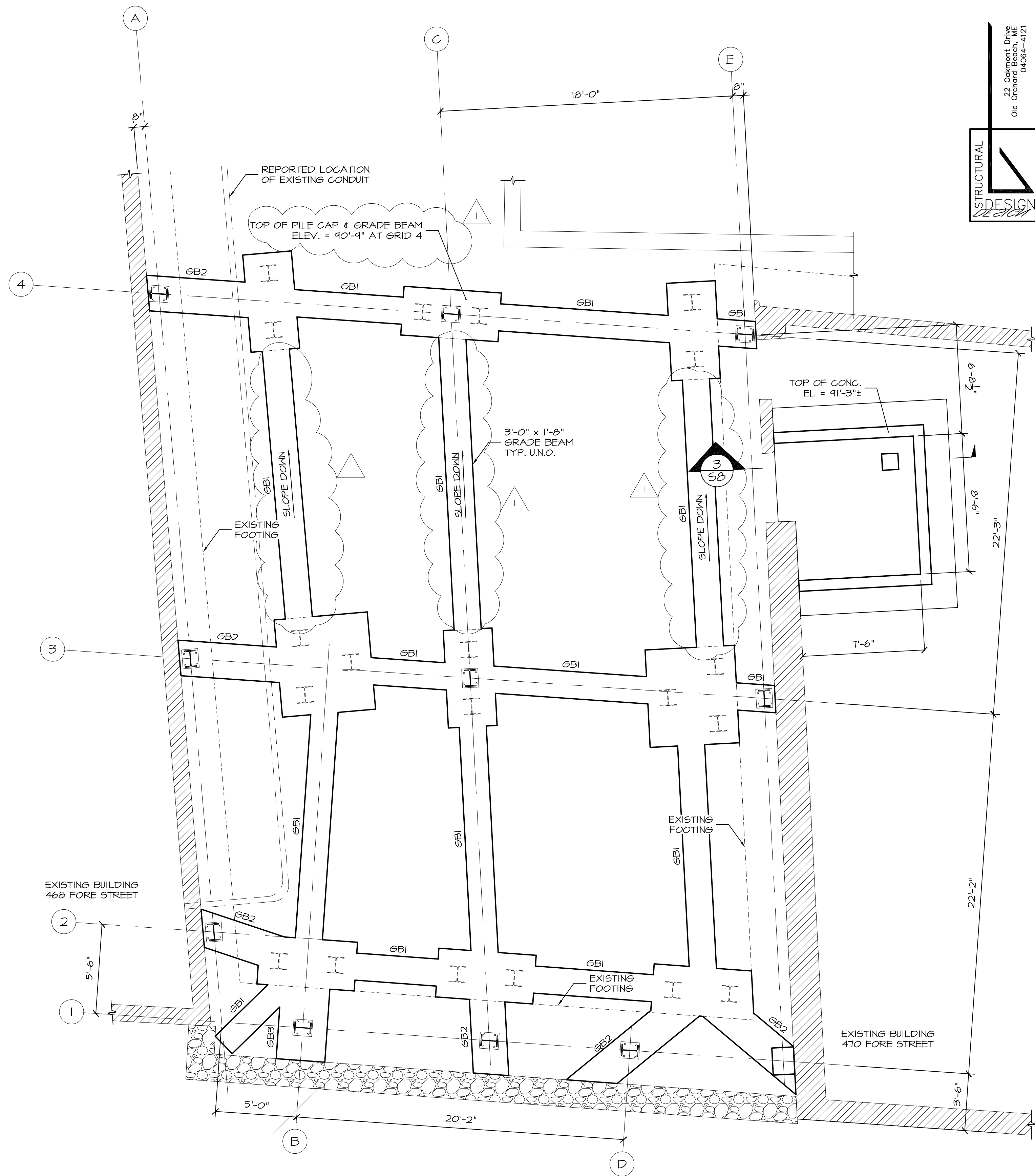
3 PILE CAP PLAN
1/2"=1'-0"

REINFORCING:
(2) # 6 BOTH WAYS



2 PILE CAP PLAN
1/2"=1'-0"

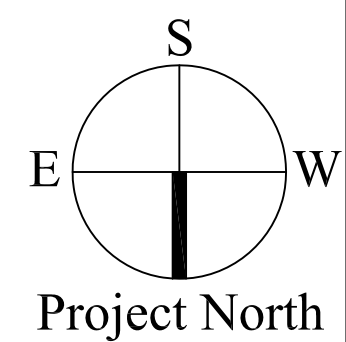
REINFORCING:
(2) #6 SHORT WAY
(4) #6 LONG WAY



GRADE BEAM/PILE CAP PLAN
1/4"=1'-0"

SEE SHEET S1 FOR GRID LAYOUT NOTES.
 TOP OF GRADEBEAM & PILECAP ELEV = 42'-1" U.N.O.

STRUCTURAL DESIGN CONSULTING #
 22 Oakmont Drive
 Old Orchard Beach, ME
 04064-4121
 207.934.8038
 Fax 207.934.8039



Date 17 Aug 2007	Scale 1/4"=1'-0"	Project PORTLAND HARBOR HOTEL ANNEX FORE STREET PORTLAND, MAINE
		Revisions: Pricing Set 100% - 17 Aug 2007 Addendum 1 - 31 Aug 2007
PileCAP/Grade Beam Plan		OWNER: 468 FORE STREET REALTY LLC FORE STREET PORTLAND, ME 04101
S2		ARCHETYPE, P.A. ARCHITECTS 48 Union Wharf Portland, Maine 04101 (207) 772-6022 Fax (207) 772-4056