

1 DOOR TYPE
Scale: 1/4" = 1'

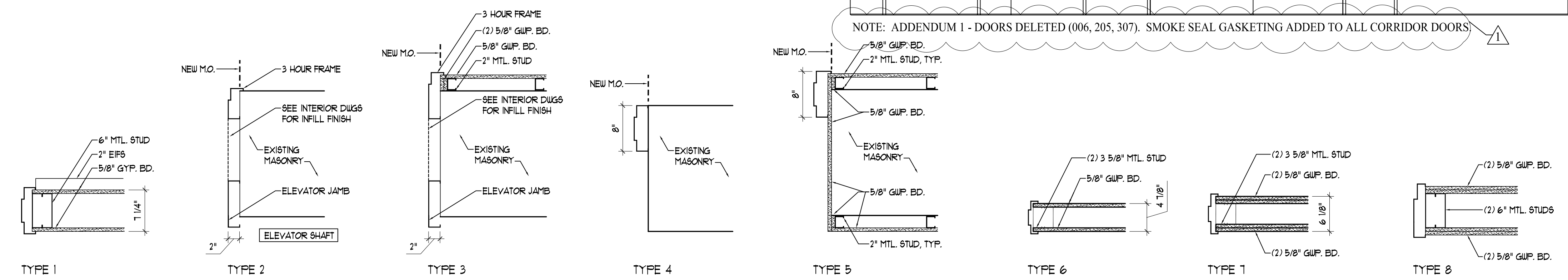
*** FINISH SCHEDULE ***

ROOM No.	ROOM Name	FINISH	ROOM No.	ROOM Name	FINISH
100	FITNESS	UNFINISHED - NIC	400	SUITE	UNFINISHED - NIC
101	RETAIL STORAGE	Existing masonry and timber left as painted. New gyp walls painted.	401	SUITE	UNFINISHED - NIC
102	ELEV. MACHINE	Paint walls & ceiling	402	SUITE	UNFINISHED - NIC
103	STAIR ONE	Painted	403	STAIR ONE	Painted
104	ELECTRICAL ROOM	Paint walls & ceiling	404	STAIR TWO	UNFINISHED - NIC
104/105	CORRIDOR	UNFINISHED - NIC	405	STAIR FOUR	UNFINISHED - NIC
200	RETAIL	Painted walls. Ceiling NIC	406	CORRIDOR	UNFINISHED - NIC
201	CORRIDOR	UNFINISHED - NIC	407	CORRIDOR	UNFINISHED - NIC
202	RETAIL	Existing masonry and walls left as painted. New storefront painted. Ceiling existing.	408	OFFICE	UNFINISHED - NIC
203	STAIR ONE	Painted	409	CORRIDOR	UNFINISHED - NIC
300	CONFERENCE	UNFINISHED - NIC	410	TOILET ROOM	UNFINISHED - NIC
301	CORRIDOR	UNFINISHED - NIC	411	OFFICE	UNFINISHED - NIC
302	STAIR TWO	UNFINISHED - NIC	500	SUITE	UNFINISHED - NIC
303	STAIR ONE	Painted	501	SUITE	UNFINISHED - NIC
304	CORRIDOR	UNFINISHED - NIC	502	CORRIDOR	UNFINISHED - NIC
305	TOILET	UNFINISHED - NIC	503	STAIR ONE	Painted
306	TOILET	UNFINISHED - NIC	504	SUITE	UNFINISHED - NIC
307	PANTRY	Paint new walls. Existing ACT ceiling left as existing.	505	STAIR FOUR	UNFINISHED - NIC
308	PANTRY	Paint new walls. Existing ACT ceiling left as existing.			

*** DOOR SCHEDULE ***

DOOR No.	SIZE W x H x T	DOOR		THRESH	FRAME		LABEL	REMARKS
		Type	Material		Material	Type		
001	3'-0" x 7'-0" x 1 3/4"	3	Alum	Alum	Metal	1		Weatherstrip
002	3'-0" x 7'-0" x 1 3/4"	2	Insul Metal	Alum	Metal	1		Weatherstrip Painted
003	3'-0" x 7'-0" x 1 3/4"	1	Metal		Metal	5	3 hr	Painted
004	3'-8" x 7'-0" x 1 3/4"	1	Metal		Metal	3	3 hr	Hold-open Painted
005	3'-0" x 7'-0" x 1 3/4"	1	Metal		Metal	6		Smoke Seal Gasketing
007	3'-0" x 7'-0" x 1 3/4"	2	Metal		Metal	7	1-1/2 hr	Painted
008	3'-0" x 7'-0" x 1 3/4"	1	Metal		Metal	7	1-1/2 hr	Painted
009	3'-0" x 7'-0" x 1 3/4"	1	Metal		Metal	6	20 min	
010	3'-0" x 7'-0" x 1 3/4"	1	Metal		Metal	6	20 min	Painted
101	3'-0" x 7'-0" x 1 3/4"	1	Metal		Metal	4	3 hr	Painted
102	3'-0" x 7'-0" x 1 3/4"	1	Metal		Metal	2	3 hr	Hold-open Painted
103	3'-0" x 7'-0" x 1 3/4"	2	Metal		Metal	4	3 hr	Painted
104	3'-0" x 7'-0" x 1 3/4"	2	Metal		Metal	7	1-1/2"	Hold-open Painted
105	3'-0" x 7'-0" x 1 3/4"	4	Alum		Alum			Smoke Seal Gasketing
106	3'-0" x 7'-0" x 1 3/4"		Alum	Alum	Alum			
107	3'-0" x 7'-0" x 1 3/4"		Mahogany	Alum	Mahogany			
108	3'-0" x 7'-0" x 1 3/4"		Mahogany	Alum	Mahogany			
201	3'-0" x 7'-0" x 1 3/4"	2	Wood		Metal	6	20 min	Smoke Seal Gasketing
202	3'-0" x 7'-0" x 1 3/4"	2	Wood		Metal	6	20 min	Smoke Seal Gasketing
203	3'-0" x 7'-0" x 1 3/4"	1	Metal		Metal	5	3 hr	Painted
204	3'-8" x 7'-0" x 1 3/4"	1	metal		Metal	3	3 hr	Hold-open Painted
206	3'-0" x 7'-0" x 1 3/4"	2	Metal		Metal	7	1-1/2 hr	Painted
207	3'-0" x 7'-0" x 1 3/4"	1	Metal		Metal	6	20 min	Smoke Seal Gasketing
208	3'-0" x 7'-0" x 1 3/4"	1	Metal		Metal	6	20 min	Smoke Seal Gasketing
209	3'-0" x 7'-0" x 1 3/4"	1	Metal		Metal	6		Smoke Seal Gasketing
301	3'-0" x 7'-0" x 1 3/4"	2	Metal		Metal	7	1-1/2 hr	Painted
302	3'-0" x 7'-0" x 1 3/4"	1	Wood		Metal	6	20 min	Smoke Seal Gasketing
303	3'-0" x 7'-0" x 1 3/4"	1	Wood		Metal	6	20 min	Smoke Seal Gasketing
304	3'-0" x 7'-0" x 1 3/4"	1	Wood		Metal	6	20 min	Smoke Seal Gasketing
305	3'-0" x 7'-0" x 1 3/4"	1	Metal		Metal	5	3 hr	Painted
306	3'-8" x 7'-0" x 1 3/4"	1	Metal		Metal	3	3 hr	Hold-open Painted
308	6'-8" x 7'-0" x 1 3/4"	2	Metal		Metal	7	1-1/2 hr	Painted
309	3'-0" x 7'-0" x 1 3/4"	1	Insul Metal		Metal	6	45 min	Smoke Seal Gasketing
310	3'-0" x 7'-0" x 1 3/4"	1	Wood		Metal	6		
311	3'-0" x 7'-0" x 1 3/4"	1	Wood		Metal	6		
312	3'-0" x 7'-0" x 1 3/4"	1	Metal		Metal	4 SIM.	45 min	Smoke Seal Gasketing
401	3'-0" x 7'-0" x 1 3/4"	2	Metal	Alum	Metal	7	1-1/2 hr	Painted
402	3'-0" x 7'-0" x 1 3/4"	1	Wood	Alum	Metal	6	20 min	Smoke Seal Gasketing
403	3'-0" x 7'-0" x 1 3/4"	1	Wood	Alum	Metal	6	20 min	Smoke Seal Gasketing
404	3'-0" x 7'-0" x 1 3/4"	1	Wood	Alum	Metal	6	20 min	Smoke Seal Gasketing
405	3'-0" x 7'-0" x 1 3/4"	1	Metal	Alum	Metal	3	3 hr	Hold-open Painted
406	3'-0" x 7'-0" x 1 3/4"	2	Insul Metal	Alum	Metal	5 (SIM.)	3 hr	Painted
407	3'-0" x 7'-0" x 1 3/4"	1	Insul Metal	Alum	Metal	1 (SIM.)	1-1/2 hr	Painted

NOTE: ADDENDUM 1 - DOORS DELETED (006, 205, 307). SMOKE SEAL GASKETING ADDED TO ALL CORRIDOR DOORS.



2 DOOR TYPES
Scale: 1/4" = 1'

OWNER:
**ARCHETYPE, P.A.
ARCHITECTS**
48 Union Wharf Portland, Maine 04101
(207) 772-6022 Fax (207) 772-4056

**468 FORE STREET
REALTY LLC**
FORE STREET
PORTLAND, ME 04101

Project:
**PORTLAND HARBOR
HOTEL ANNEX**
468-470 FORE STREET
PORTLAND, MAINE

Revisions:
Bid Set - 17 August 2007
Addendum One - 31 August 2007

Scale
AS NOTED

Date
17 August 2007

A7.01

DOOR SCHEDULE