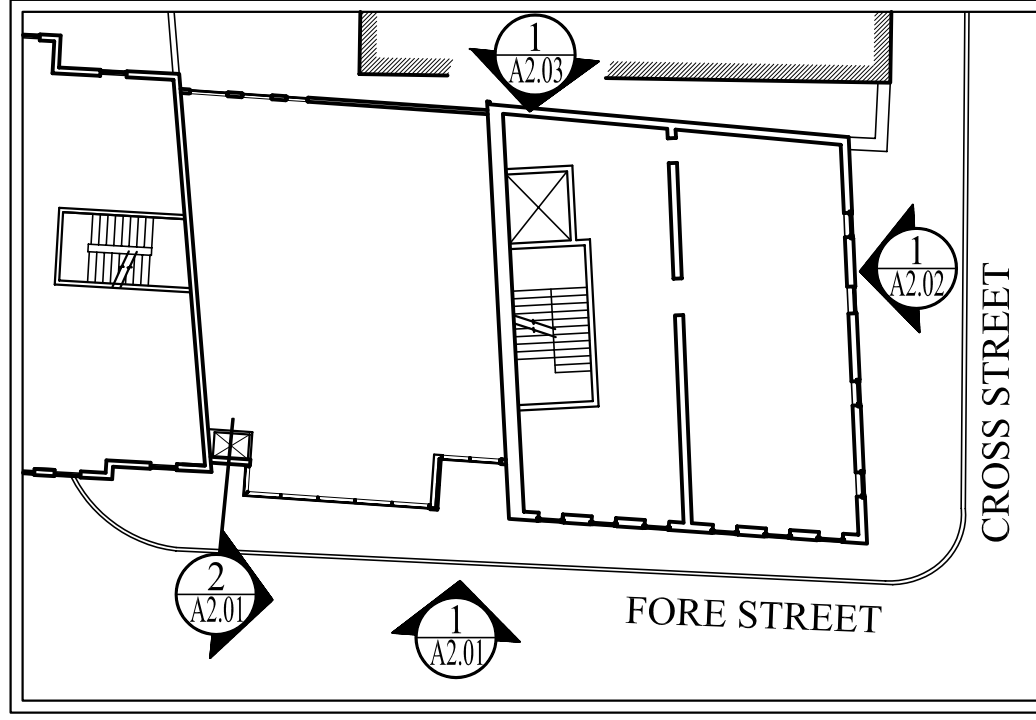


KEY NOTES:

- ① • GLASS CURTAIN WALL SYSTEM - BUTT GLAZED ON THE VERTICAL JOINTS AND MULLION CAPS ON THE HORIZONTALS.
- ② • LEAD COATED COPPER SIDING - LOOK BEAM. ALIGN VERTICAL BEAMS WITH JOINTS IN GLASS CURTAIN WALL SYSTEM ABOVE AND BELOW - AS SHOWN.
- ③ • GRANITE PANELS
- ④ • EIFS SYSTEM - COLOR BY ARCHITECT
- ⑤ • POLISHED STEEL LETTERING
- ⑥ • BUTT GLAZED OUTSIDE CORNER - NO MULLION CAP

KEY PLAN:



REAR WALL:  
 • PATCH & REPAIR EXISTING STUCCO FINISH  
 • INFILL WITH BRICK MASONRY ALL EXISTING WINDOW OPENINGS  
 • APPLY STUCCO FINISH OVER INFILL  
 • APPLY 'ICAPROOF' FLUID APPLIED WATERPROOFING - COLOR BY ARCHITECT

1 | SOUTH ELEVATION  
 SCALE: 1/4"=1'-0"

OWNER:	468 FORE STREET REALTY LLC FORE STREET PORTLAND, ME 04101
ARCHETYPE, P.A. ARCHITECTS	48 Union Wharf Portland, Maine 04101 (207) 772-6022 Fax (207) 772-4056
PROJECT:	PORTLAND HARBOR HOTEL ANNEX 468-470 FORE STREET PORTLAND, MAINE
REVISIONS:	Bid Set - 17 August 2007 Addendum One - 31 August 2007
DATE:	17 August 2007
SCALE:	1/4" = 1'-0"
SOUTH ELEVATION	SOUTH ELEVATION
A2.03	