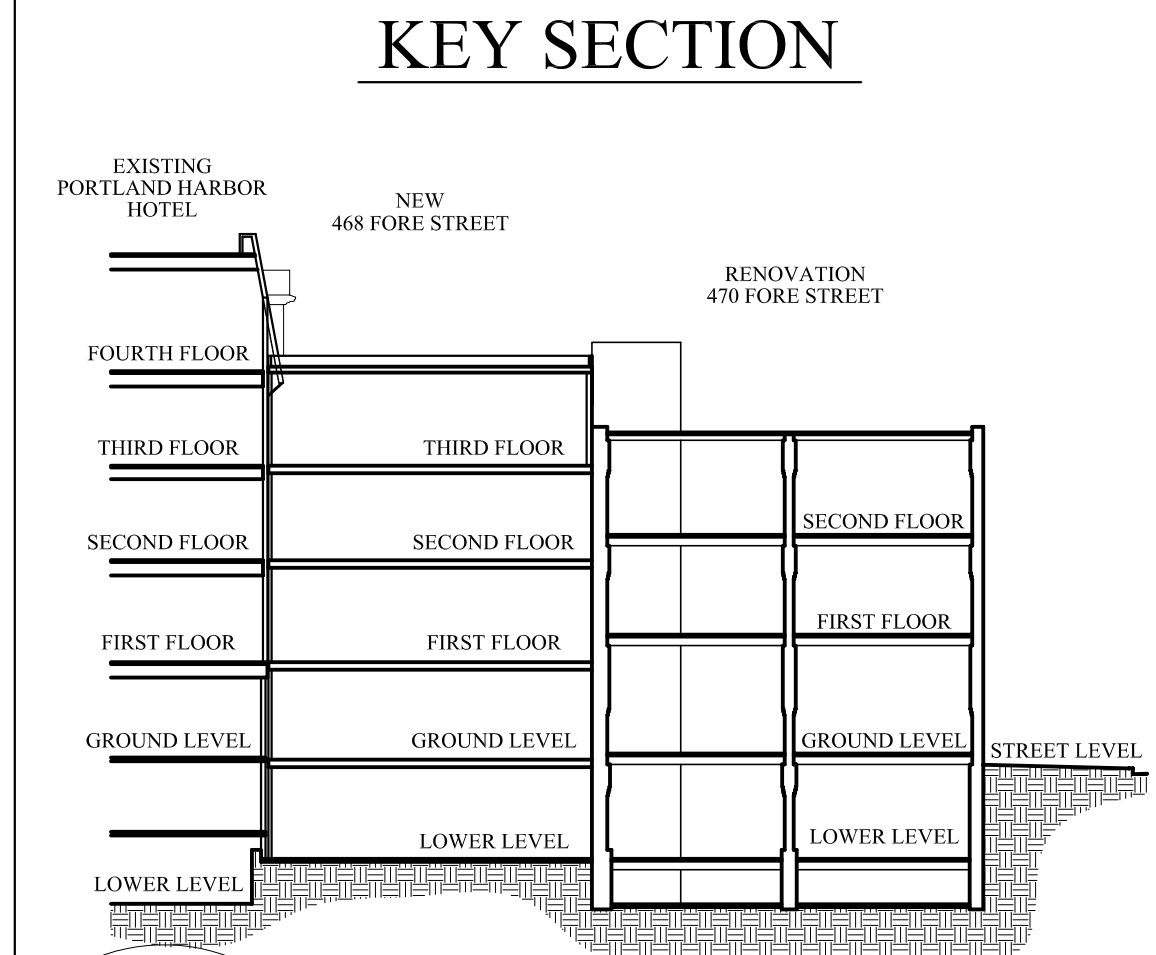


- TAPERED LAYOUT TO ACCOMPLISH R=38
- TAPERED INSULATION COVERED WITH 1/2" H.D. FIBERBOARD
- 3" SUMP TO BE MADE WITH 18" TAPERED EDGE STRIP
- CRICKET TO BE FORMED USING 1/2" PER FOOT TAPERED ISO. (Q-BOARD)
- CRICKETS BEHIND UNITS TO BE FORMED USING 18" TAPERED EDGE STRIP
- BASE LAYER AS REQUIRED TO ACCOMPLISH R=38

1/4" PER FOOT TAPERED ISO.	
CODE LETTER	THICKNESS (INCH)
G	1.0-2.0
H	2.0-3.0
I	3.0-4.0



OWNER:  
**468 FORE STREET REALTY LLC**  
FORE STREET  
PORTLAND, ME 04101

ARCHETYPE, P.A. ARCHITECTS  
48 Union Wharf Portland, Maine 04101  
(207) 772-6022 Fax (207) 772-4056

PROJECT:  
**PORTLAND HARBOR HOTEL ANNEX**  
468-470 FORE STREET  
PORTLAND, MAINE

Revisions:  
Bid Set - 17 August 2007  
Addendum One - 31 August 2007

Date: 17 August 2007  
Scale: 1/4" = 1'-0"  
**ROOF PLAN**

**A1.06**

