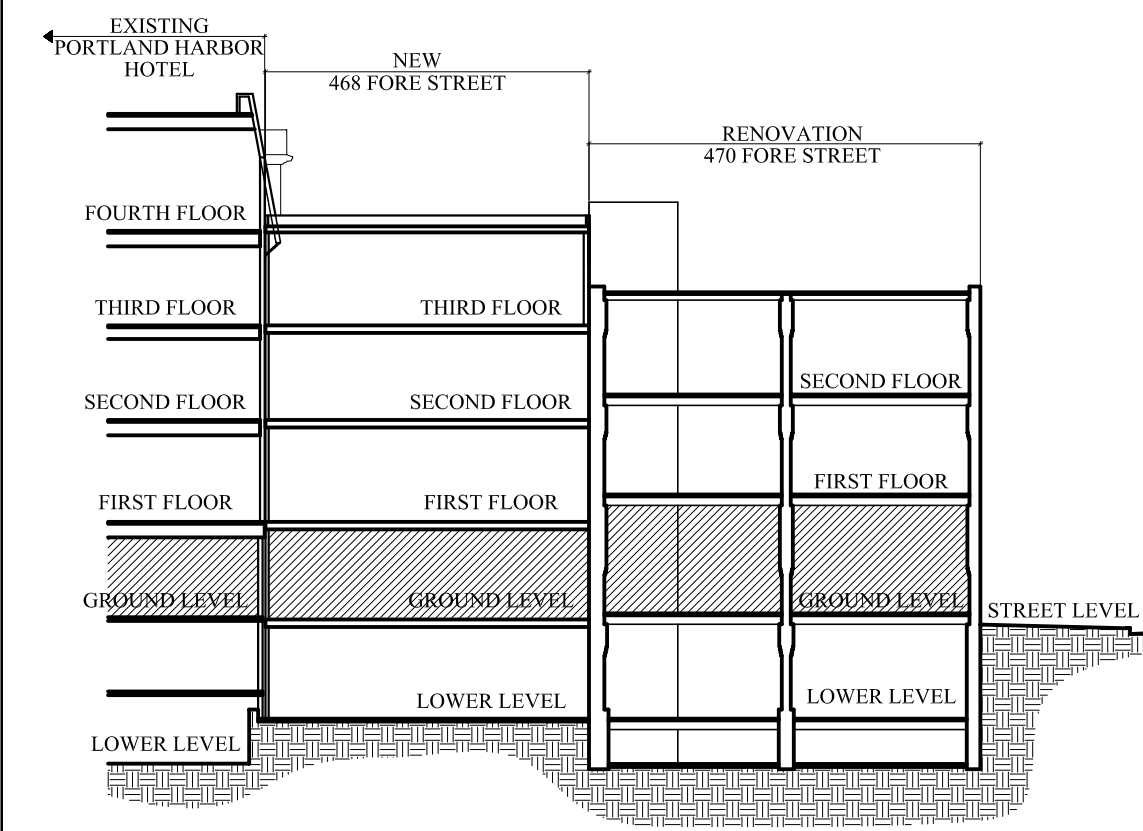


2 | GROUND LEVEL FLOOR PLAN  
SCALE: 1/4" = 1'-0"

FORE STREET

KEY SECTION



LEGEND

NEW WALL - STUD 4 GYP. BD.	[Hatched pattern]
NEW WALL - 2-HOUR SEPARATION	[Hatched pattern]
NEW MASONRY INFILL	[Hatched pattern]
NEW CONCRETE FNDTN./RETAINING WALL	[Hatched pattern]
EXISTING WALL	[Hatched pattern]
(A) = ADDITION (468 FORE ST.)	
(R) = RENOVATION (470 FORE ST.)	

BUILDING SECTION	[Symbol]
WALL SECTION	[Symbol]
SECTION DETAIL	[Symbol]
PLAN DETAIL	[Symbol]
WALL TYPE (SEE SHEET A4.00)	[Symbol]
FLOOR/CEILING TYPE (SEE SHEET A4.00)	[Symbol]

GENERAL NOTES

- 1) ALL NEW STEEL BEAMS TO BE SPRAYED WITH TWO HOUR RATED FIRE PROOFING UNLESS NOTED OTHERWISE.
- 2) ALL COLUMNS TO BE SPRAYED WITH 2 HOUR FIREPROOFING UNLESS NOTED OTHERWISE (SOME TO RECEIVE 2 HOUR INTUMESCENT PAINT, SEE PAINT SCHEDULE).

OWNER:  
**468 FORE STREET REALTY LLC**  
FORE STREET  
PORTLAND, ME 04101

ARCHETYPE, P.A.  
**ARCHITECTS**  
48 Union Wharf Portland, Maine 04101  
(207) 772-6022 Fax (207) 772-4056

Project:  
**PORTLAND HARBOR HOTEL ANNEX**  
468-470 FORE STREET  
PORTLAND, MAINE

Revisions:  
Bid Set - 17 August 2007  
Addendum One - 31 August 2007

Date: 17 August 2007  
Scale: 1/4" = 1'-0"  
**GROUND LEVEL PLAN**

**A1.02**

