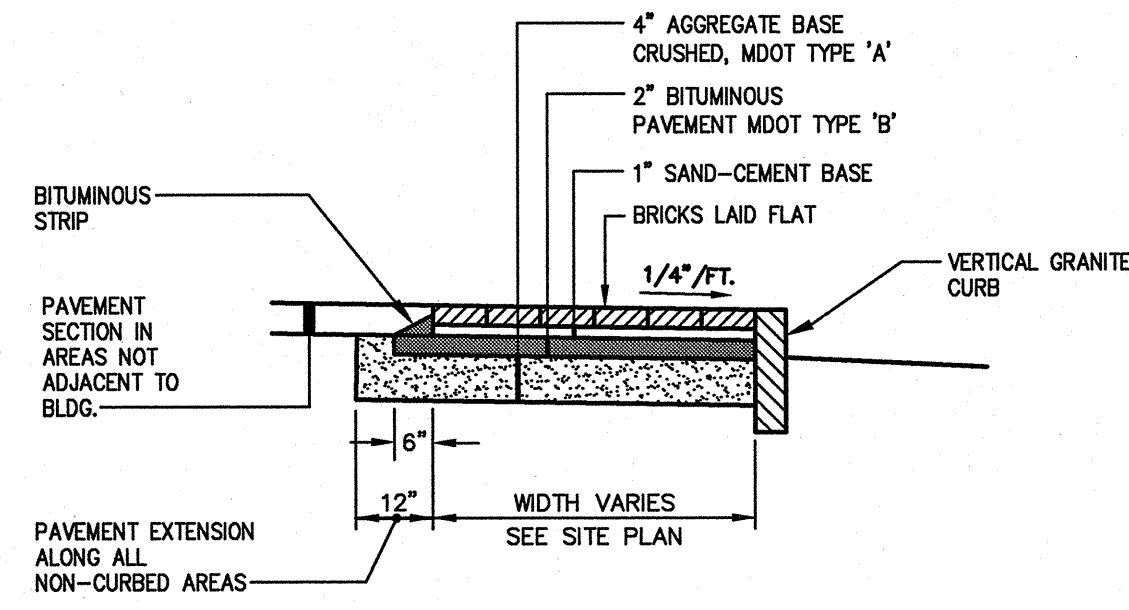
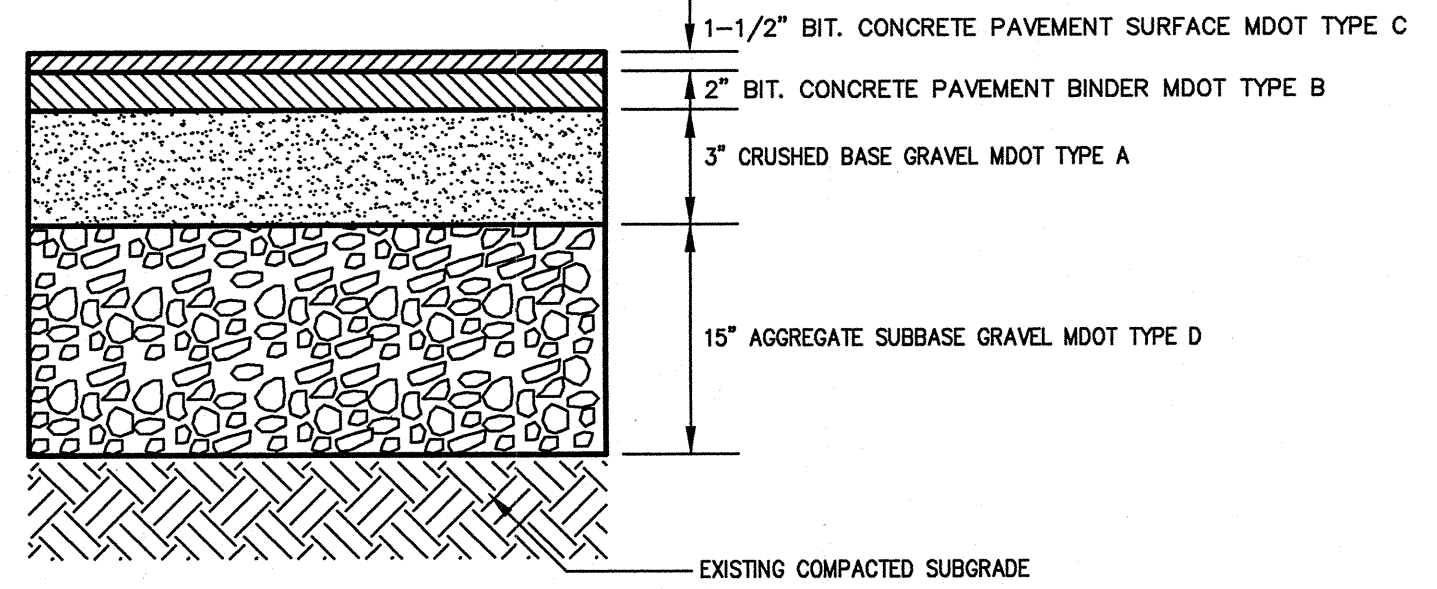


1 VERTICAL GRANITE CURB DETAIL
N.T.S.

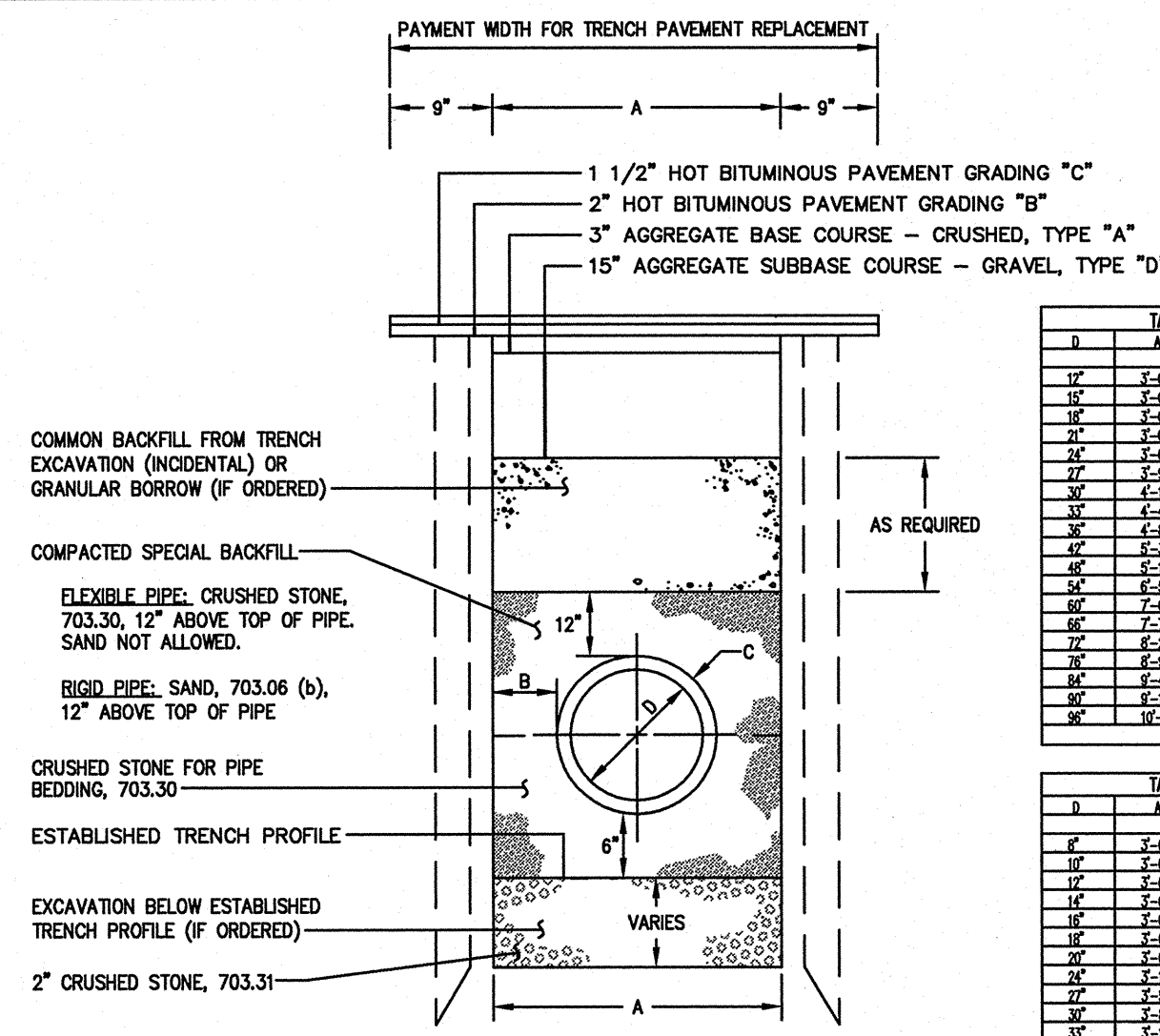


2 BRICK SIDEWALK PAVEMENT DETAIL
N.T.S.

NOTES:
 1. APPLY TACK COAT BETWEEN BINDER AND SURFACE COURSES
 2. ALL MATERIALS SHALL CONFORM TO MDOT SPECIFICATIONS, LATEST REVISION
 3. COMPACTION OF ALL MATERIALS TO BE IN ACCORDANCE WITH SPECIFICATIONS



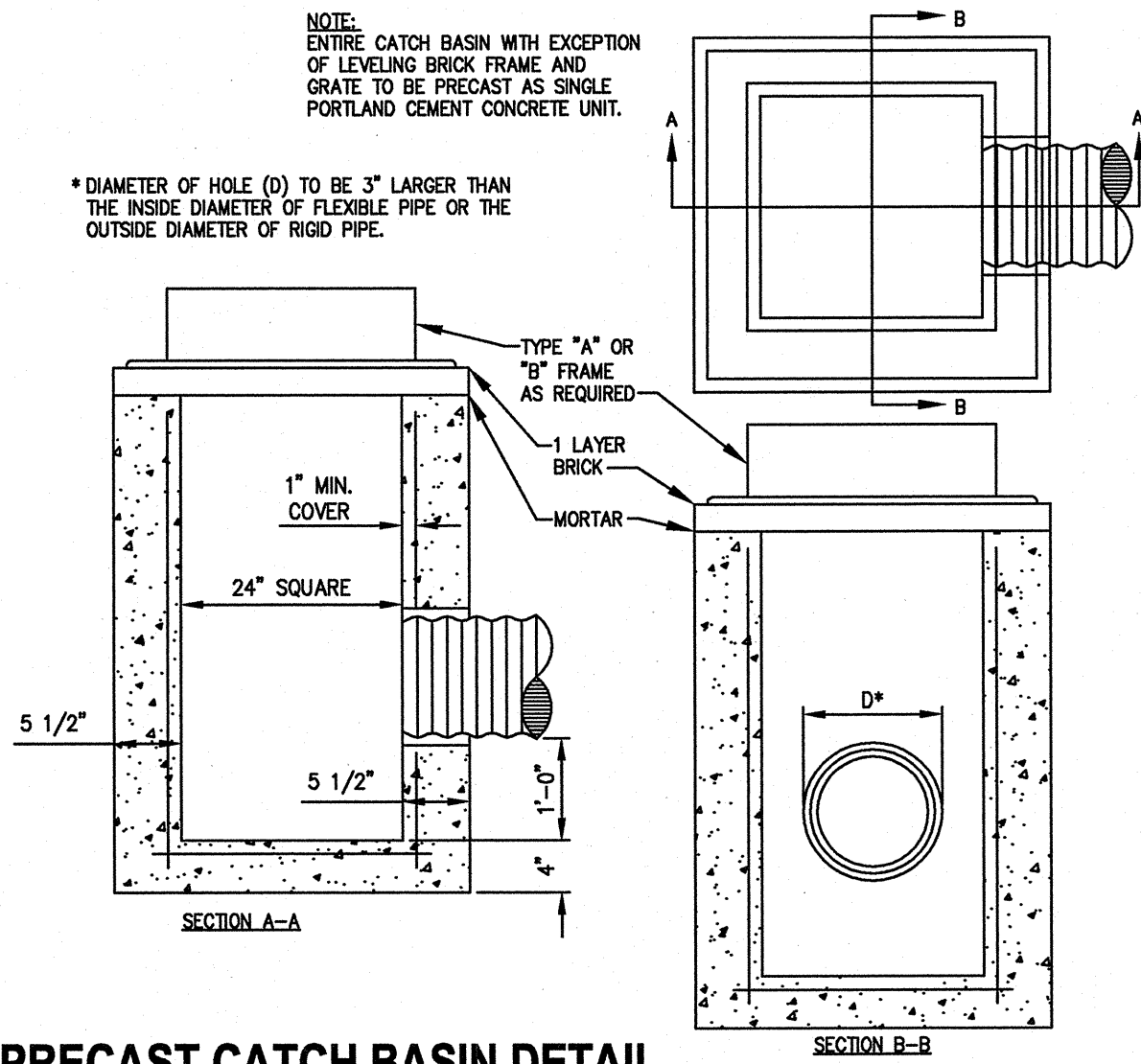
3 TYP. PAVEMENT SECTION DETAIL
N.T.S.



4 TYPICAL TRENCH DETAIL
N.T.S.

D	A	B	C	WEIGHT	QTY PER
12"	4'-0"	8'-0"	1'-0"	8.19	39.19
12"	4'-0"	8'-0"	1'-6"	8.89	44.17
12"	4'-0"	8'-0"	2'-0"	9.95	48
12"	4'-0"	8'-0"	2'-6"	11.21	53.78
12"	4'-0"	8'-0"	3'-0"	12.67	59.54
12"	4'-0"	8'-0"	3'-6"	14.34	65.25
12"	4'-0"	8'-0"	4'-0"	16.22	71
12"	4'-0"	8'-0"	4'-6"	18.31	76.71
12"	4'-0"	8'-0"	5'-0"	20.61	82.36
12"	4'-0"	8'-0"	5'-6"	23.11	88
12"	4'-0"	8'-0"	6'-0"	25.81	93.61
12"	4'-0"	8'-0"	6'-6"	28.71	99.17
12"	4'-0"	8'-0"	7'-0"	31.81	104.68
12"	4'-0"	8'-0"	7'-6"	35.11	110.14
12"	4'-0"	8'-0"	8'-0"	38.61	115.55
12"	4'-0"	8'-0"	8'-6"	42.31	120.91
12"	4'-0"	8'-0"	9'-0"	46.21	127.13
12"	4'-0"	8'-0"	9'-6"	50.31	133.31
12"	4'-0"	8'-0"	10'-0"	54.61	139.45

D	A	B	C	WEIGHT	QTY PER
12"	4'-0"	8'-0"	1'-0"	7.29	33.17
12"	4'-0"	8'-0"	1'-6"	7.89	35.17
12"	4'-0"	8'-0"	2'-0"	8.71	38.33
12"	4'-0"	8'-0"	2'-6"	9.76	41.61
12"	4'-0"	8'-0"	3'-0"	11.06	45
12"	4'-0"	8'-0"	3'-6"	12.61	48.41
12"	4'-0"	8'-0"	4'-0"	14.41	51.81
12"	4'-0"	8'-0"	4'-6"	16.46	55.27
12"	4'-0"	8'-0"	5'-0"	18.76	58.68
12"	4'-0"	8'-0"	5'-6"	21.31	62.05
12"	4'-0"	8'-0"	6'-0"	24.11	65.37
12"	4'-0"	8'-0"	6'-6"	27.16	68.65
12"	4'-0"	8'-0"	7'-0"	30.46	71.88
12"	4'-0"	8'-0"	7'-6"	34.01	75.06
12"	4'-0"	8'-0"	8'-0"	37.81	78.2
12"	4'-0"	8'-0"	8'-6"	41.86	81.3
12"	4'-0"	8'-0"	9'-0"	46.16	84.35



5 2' SQUARE PRECAST CATCH BASIN DETAIL
N.T.S.

PRELIMINARY - NOT FOR CONSTRUCTION

		PROJECT PORTLAND HARBOR HOTEL ANNEX	
		SHEET TITLE DETAILS	
CLIENT 468 FORE STREET REALTY LLC		DRAWN: CDD DATE: AUGUST 2007 DESIGNED: JAL SCALE: N.T.S. CHECKED: JAL JOB NO. 2760 FILE NAME: 2760-DET SHEET 3	
REVISIONS 2 08.21.07 SUBMITTED TO THE CITY OF PORTLAND 1 08.15.07 SUBMITTED TO ARCHETYPE FOR REVIEW REV DATE DESCRIPTION		P.E. JOSEPH A. LAVERRIERE LIC. # 7417	