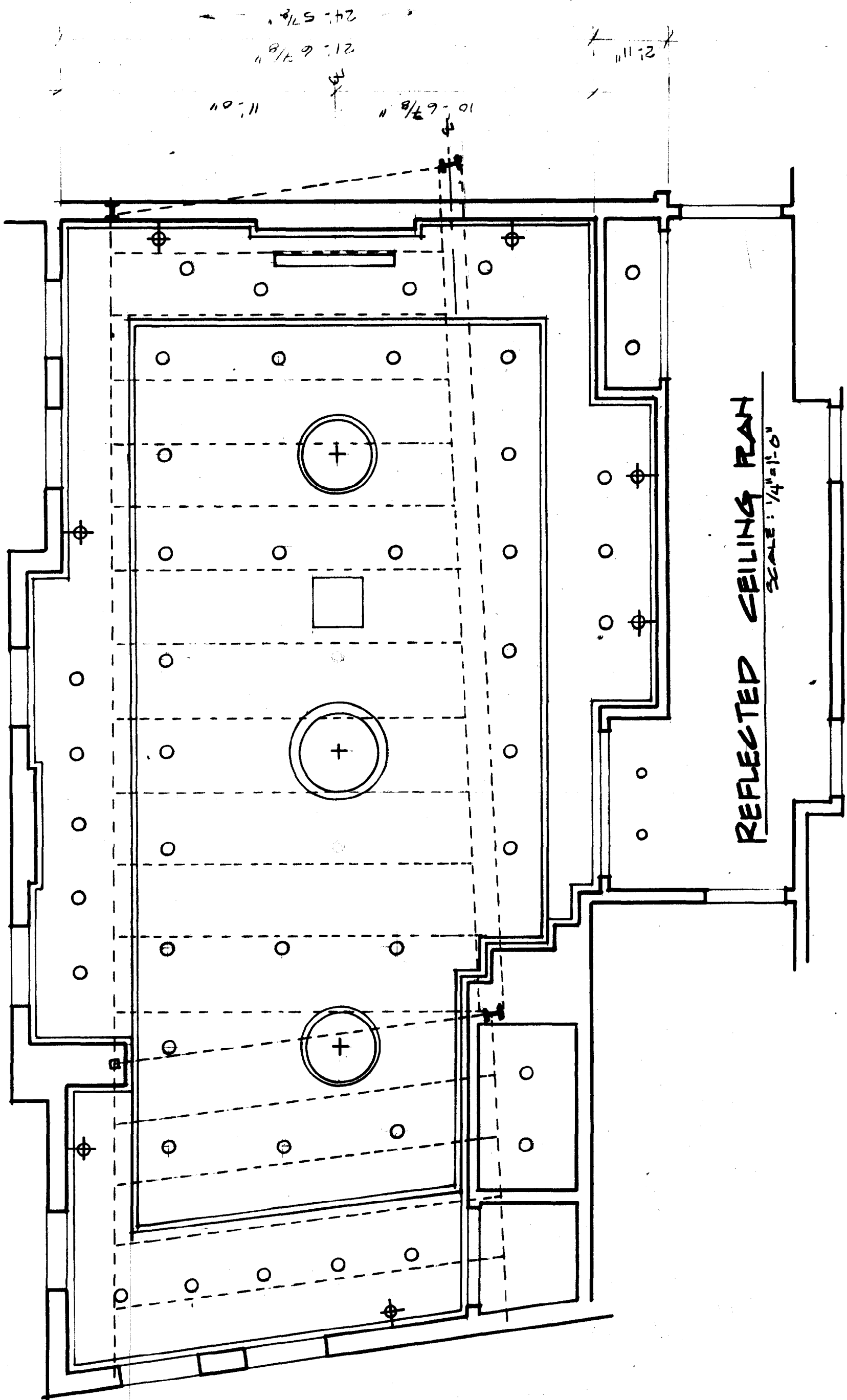


PLAN

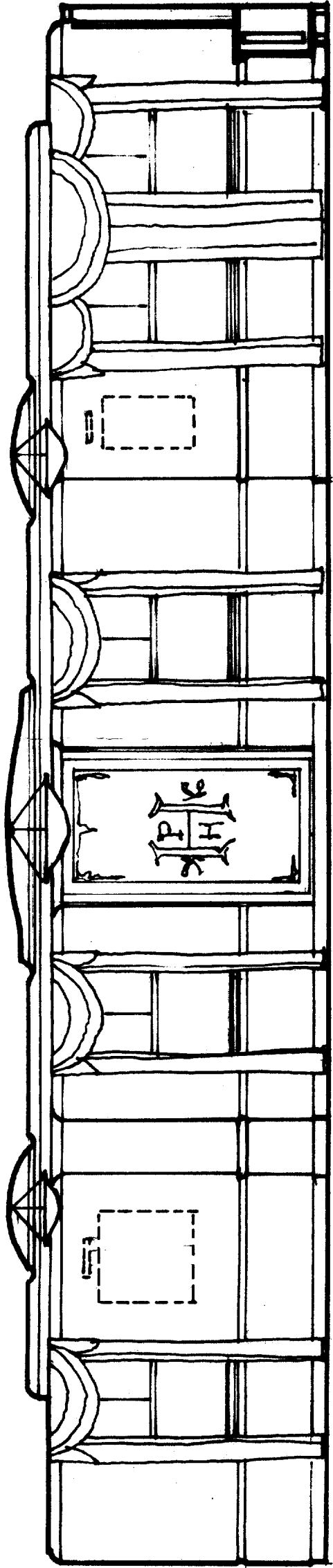
SCALE: 1/4" = 1'-0"



REFLECTED CEILING PLAN

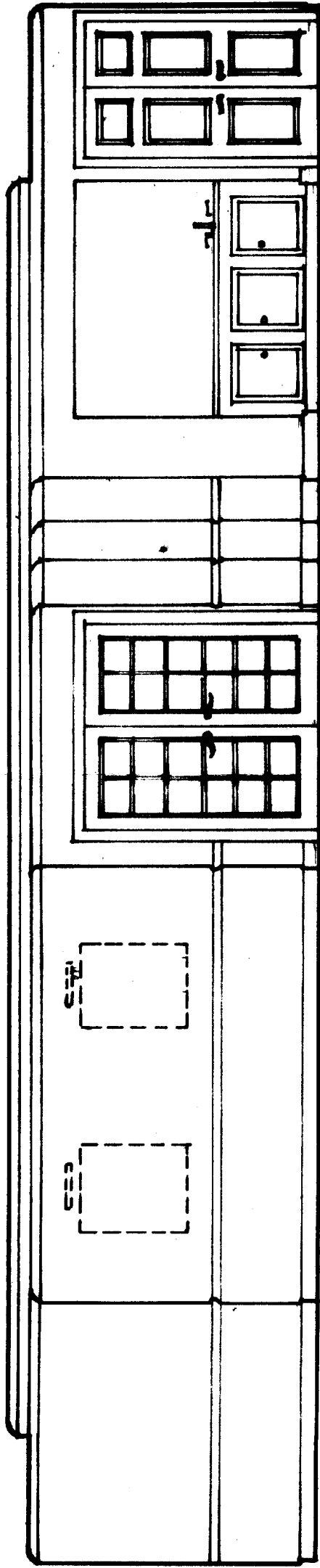
SCALE: 1/4" = 1'-0"

24' 5/8"
 21' 6 7/8"
 11'-0"
 10'-6 7/8"
 11'-2"



ELEVATION

SCALE: 1/4" = 1'-0"



ELEVATION

SCALE: 1/4" = 1'-0"