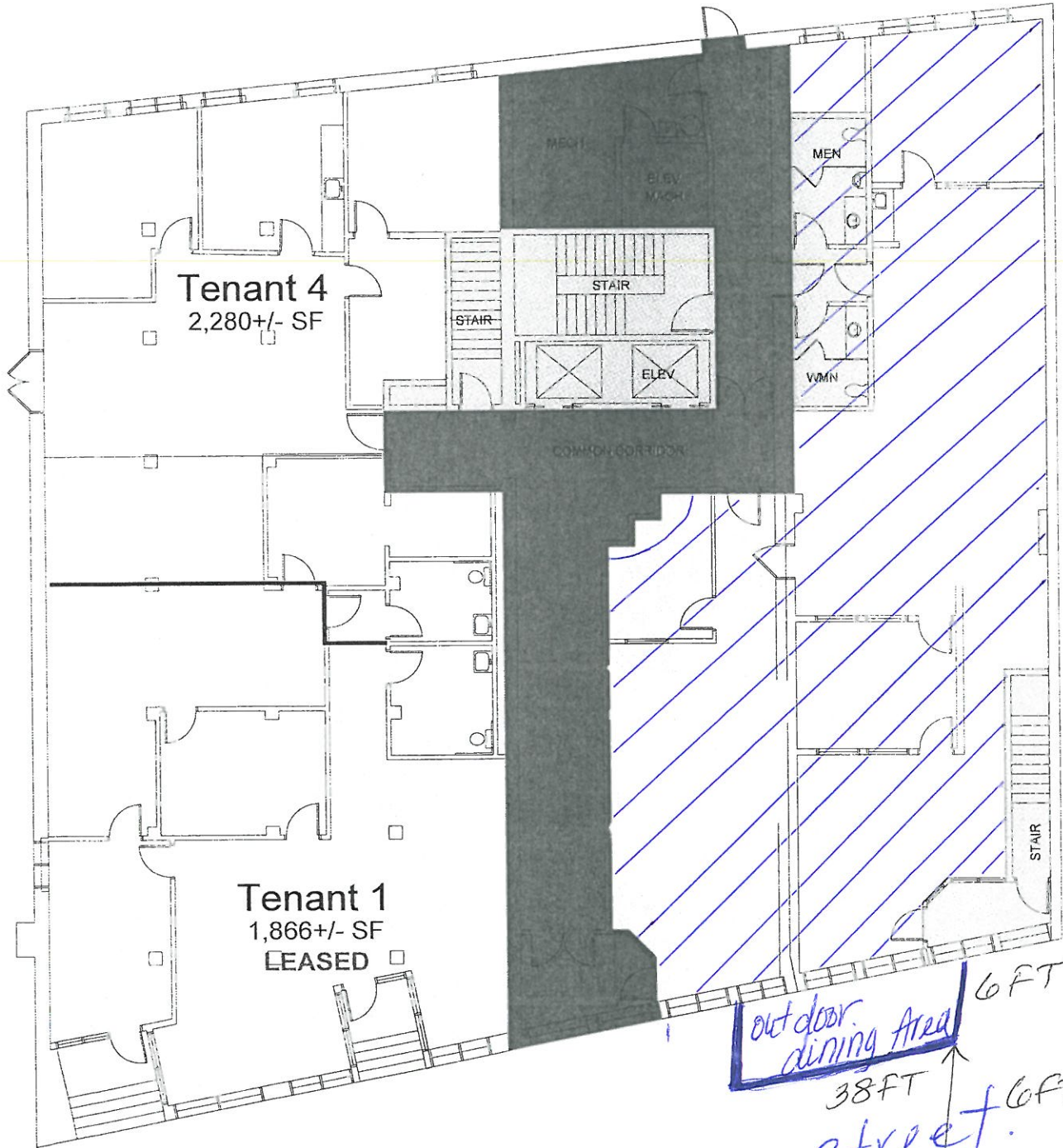


# 245 Commercial Street Portland, ME

Exhibit A

FIRST FLOOR  
6,837 +/- SF



Tenant 4  
2,280 +/- SF

Tenant 1  
1,866 +/- SF  
LEASED

DEWEY'S

outdoor dining area  
38FT x 6FT

12FT side walk

Commercial Street

245 Commercial Street.  
FIRST FLOOR

Veranda Noodle  
House

Another Business  
DZWEY'S

Another Business

Common  
Corridor

Entrance

Stairway

1. 2. 3. 4. 5. 6.

Seats  
and Table  
@ each  
window.

Table (square) 24" x 24" Total 6 tables.  
chair width 12" Total 24 chairs

12 ft.

38 ft

Sidewalk: from street  
to edge of Building  
= 12 ft.

Commercial Street

