



Submittal Data Sheet

Branch Selector Box (6-Port) - BS6Q54TVJ

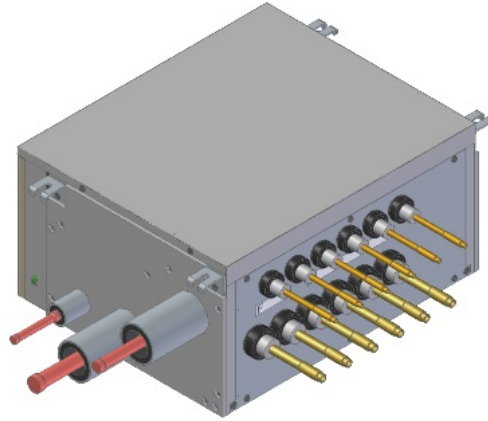
Project: HVAC MEMIC

Submitted by: David Chadwick of F W WEBB CO on 11/14/2017

Submitted to: No Engineer Name Specified

FEATURES

- Individual control and changeover with extended range of product offerings - 4, 6, 8, 10 and 12 port options.
- Up to 54 MBH capacity per port.
- Lower sound levels thanks to simplified mechanical design, when compared to VRV III models.
- Ultimate design flexibility - single and multi-port units can be combined in one system.
- Quick installation due to fewer brazing points and less wiring.
- Unlimited number of unused ports per box or system.
- Low built-in height.
- No drain piping needed.
- Standard Limited Warranty: 10-year warranty on all parts.





Submittal Data Sheet

Branch Selector Box (6-Port) - BS6Q54TVJ

Project: HVAC MEMIC

Submitted by: David Chadwick of F W WEBB CO on 11/14/2017

Submitted to: No Engineer Name Specified

PERFORMANCE

Indoor Unit Model No.	BS6Q54TVJ	Indoor Unit Name:	Branch Selector Box (6-Port)
Type:		Rated Cooling Conditions:	Indoor (°F DB/WB): / Ambient (°F DB/WB): /
Rated Cooling Capacity (Btu/hr):	216,000	Rated Heating Conditions:	Indoor (°F DB/WB): / Ambient (°F DB/WB): /
Sensible Capacity (Btu/hr):		Rated Piping Length(ft):	
Cooling Input Power (kW):	0.060	Rated Height Separation (ft):	

INDOOR UNIT DETAILS

Power Supply (V/Hz/Ph):	208-230 / 60 / 1	Airflow Rate (H) (CFM):	
Power Supply Connections:		Moisture Removal (Gal/hr):	
Min. Circuit Amps MCA (A):	0.60	Gas Pipe Connection (inch):	1-1/8
Max Overcurrent Protection (MOP) (A):	15.00	Liquid Pipe Connection (inch):	1/2
Dimensions (HxWxD) (in):	11-3/4 x 22-13/16 x 18-15/16	Condensate Connection (inch):	
Net Weight (lb):	68	Sound Pressure () (dBA):	
Ext. Static Pressure (Rated/Max) (inWg):	/	Sound Power Level (dBA):	



Submittal Data Sheet

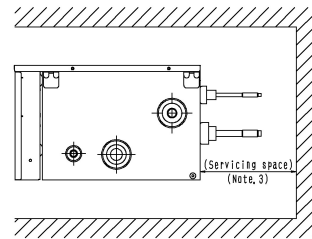
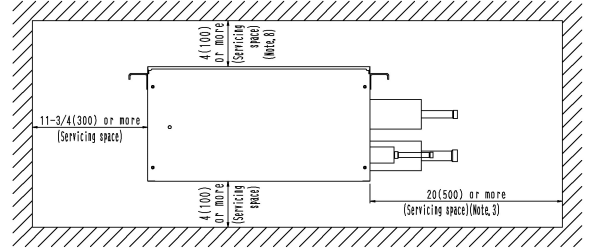
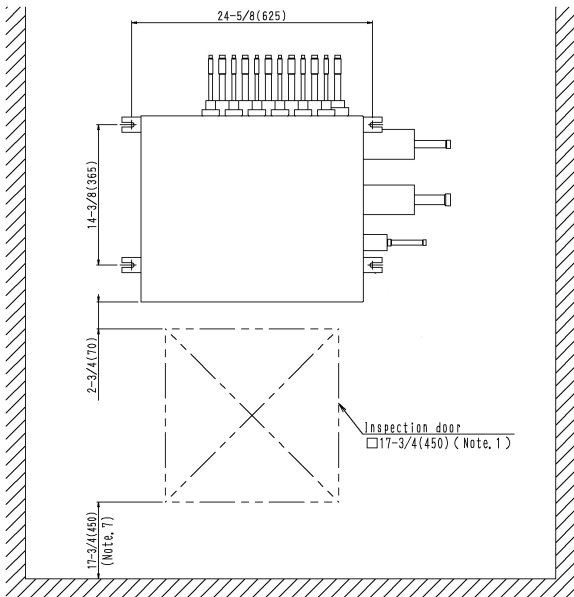
Branch Selector Box (6-Port) - BS6Q54TVJ

Project: HVAC MEMIC

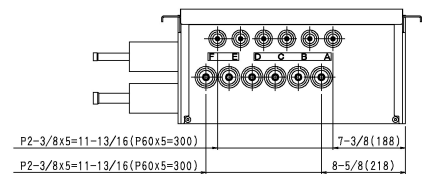
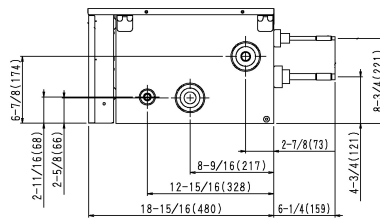
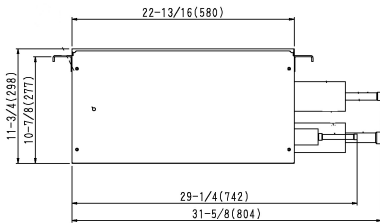
Submitted by: David Chadwick of F W WEBB CO on 11/14/2017

Submitted to: No Engineer Name Specified

DIMENSIONAL DRAWING



Servicing space





Submittal Data Sheet

4.0-Ton DC-Ducted Concealed Ceiling Unit - FXMQ48PBVJU

Project: HVAC MEMIC

Submitted by: David Chadwick of F W WEBB CO on 11/14/2017

Submitted to: No Engineer Name Specified

FEATURES

- Increased capacity range for increased flexibility
- Improved efficiency with DC fan motor
- Ease of installation with auto adjusting airflow at commissioning based on external static pressure
- Easy maintenance with service access from below
- Installation flexibility with a low profile, compact design at less than 12" in height
- Integral condensate pump with up to 18-3/8" lift
- Standard Limited Warranty: 10-year warranty on compressor and all parts

BENEFITS

- Enhanced indoor air quality and LEED ready with MERV 13 filter options
- Flexible ductwork design with ESP capabilities up to 0.80" W.G.
- New economizer control logic
- New configurable auxiliary heater control logic
- Design allows it to be completely concealed - perfect for retail, classrooms, offices, banks, restaurants, and hotels.





Submittal Data Sheet

4.0-Ton DC-Ducted Concealed Ceiling Unit - FXMQ48PBVJU

Project: HVAC MEMIC

Submitted by: David Chadwick of F W WEBB CO on 11/14/2017

Submitted to: No Engineer Name Specified

PERFORMANCE

Indoor Unit Model No.	FXMQ48PBVJU	Indoor Unit Name:	4.0-Ton DC-Ducted Concealed Ceiling Unit
Type:	Ducted	Rated Cooling Conditions:	Indoor (°F DB/WB): 80 / 67 Ambient (°F DB/WB): 95 / 75
Rated Cooling Capacity (Btu/hr):	48,000	Rated Heating Conditions:	Indoor (°F DB/WB): 70 / 60 Ambient (°F DB/WB): 47 / 43
Sensible Capacity (Btu/hr):	35,800	Rated Piping Length(ft):	
Cooling Input Power (kW):	0.460	Rated Height Separation (ft):	
Rated Heating Capacity (Btu/hr):	54,000		
Heating Input Power (kW):	0.45		

INDOOR UNIT DETAILS

Power Supply (V/Hz/Ph):	208-230 / 60 / 1	Airflow Rate (HH/H/L) (CFM):	1,377/1165/988
Power Supply Connections:	L1, L2, Ground	Moisture Removal (Gal/hr):	
Min. Circuit Amps MCA (A):	3.4	Gas Pipe Connection (inch):	5/8
Max Overcurrent Protection (MOP) (A):	15	Liquid Pipe Connection (inch):	3/8
Dimensions (HxWxD) (in):	11-13/16 x 55-1/8 x 27-9/16	Condensate Connection (inch):	1-1/4
Net Weight (lb):	102	Sound Pressure (H/L) (dBA):	42/40
Ext. Static Pressure (Rated/Max) (inWg):	0.4" / 0.8"	Sound Power Level (dBA):	70

Submittal Data Sheet

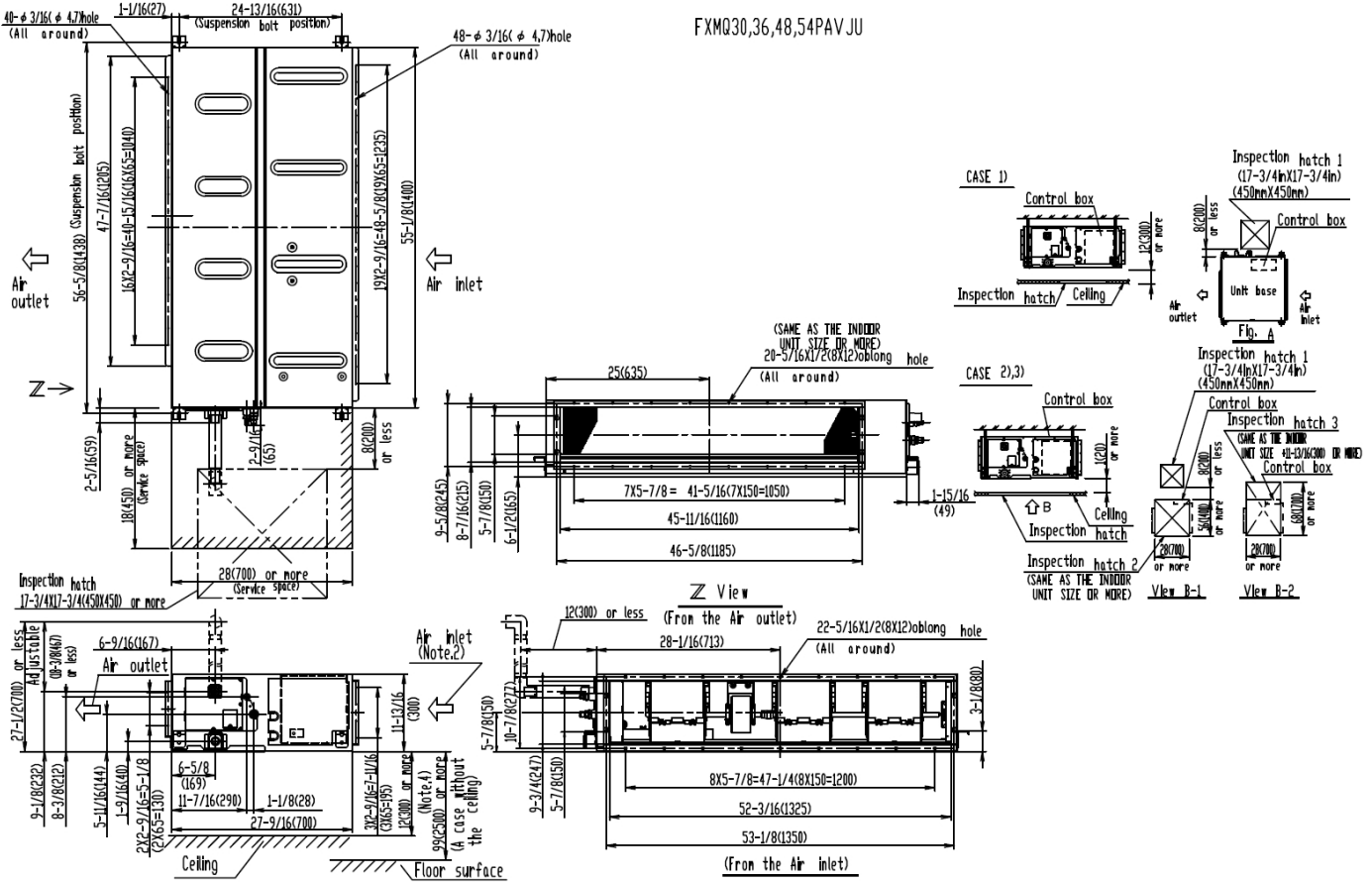
4.0-Ton DC-Ducted Concealed Ceiling Unit - FXMQ48PBVJU

Project: HVAC MEMIC

Submitted by: David Chadwick of F W WEBB CO on 11/14/2017

Submitted to: No Engineer Name Specified

DIMENSIONAL DRAWING





Submittal Data Sheet

2.0-Ton Slim Duct Built-in Concealed Ceiling Unit - FXDQ24MVJU

Project: HVAC MEMIC

Submitted by: David Chadwick of F W WEBB CO on 11/14/2017

Submitted to: No Engineer Name Specified

FEATURES

- The slim height, at only 7-7/8", makes it suitable for most of the applications where attic / bulkhead space is limited
- With a sound level as low as 32 dBA, these systems are among the quietest on the market
- Washable filter included
- Integral condensate pump with up to 23-5/8" lift
- Blends unobtrusively with any interior decor; only the suction and discharge grills are visible
- Standard Limited Warranty: 10-year warranty on compressor and all parts





Submittal Data Sheet

2.0-Ton Slim Duct Built-in Concealed Ceiling Unit - FXDQ24MVJU

Project: HVAC MEMIC

Submitted by: David Chadwick of F W WEBB CO on 11/14/2017

Submitted to: No Engineer Name Specified

PERFORMANCE

Indoor Unit Model No.	FXDQ24MVJU	Indoor Unit Name:	2.0-Ton Slim Duct Built-in Concealed Ceiling Unit
Type:	Ducted	Rated Cooling Conditions:	Indoor (°F DB/WB): 80 / 67 Ambient (°F DB/WB): 95 / 75
Rated Cooling Capacity (Btu/hr):	24,000	Rated Heating Conditions:	Indoor (°F DB/WB): 70 / 60 Ambient (°F DB/WB): 47 / 43
Sensible Capacity (Btu/hr):	16,400	Rated Piping Length(ft):	
Cooling Input Power (kW):	0.190	Rated Height Separation (ft):	
Rated Heating Capacity (Btu/hr):	27,000		
Heating Input Power (kW):	0.18		

INDOOR UNIT DETAILS

Power Supply (V/Hz/Ph):	208-230 / 60 / 1	Airflow Rate (H/L) (CFM):	580/460
Power Supply Connections:	L1, L2, Ground	Moisture Removal (Gal/hr):	
Min. Circuit Amps MCA (A):	1.4	Gas Pipe Connection (inch):	5/8
Max Overcurrent Protection (MOP) (A):	15	Liquid Pipe Connection (inch):	3/8
Dimensions (HxWxD) (in):	7-7/8 x 43-5/16 x 24-7/16	Condensate Connection (inch):	1-1/32
Net Weight (lb):	71	Sound Pressure (H/L) (dBA):	36/32
Ext. Static Pressure (Rated/Max) (inWg):	0.17" / 0.17"	Sound Power Level (dBA):	

Submittal Data Sheet

2.0-Ton Slim Duct Built-in Concealed Ceiling Unit - FXDQ24MVJU

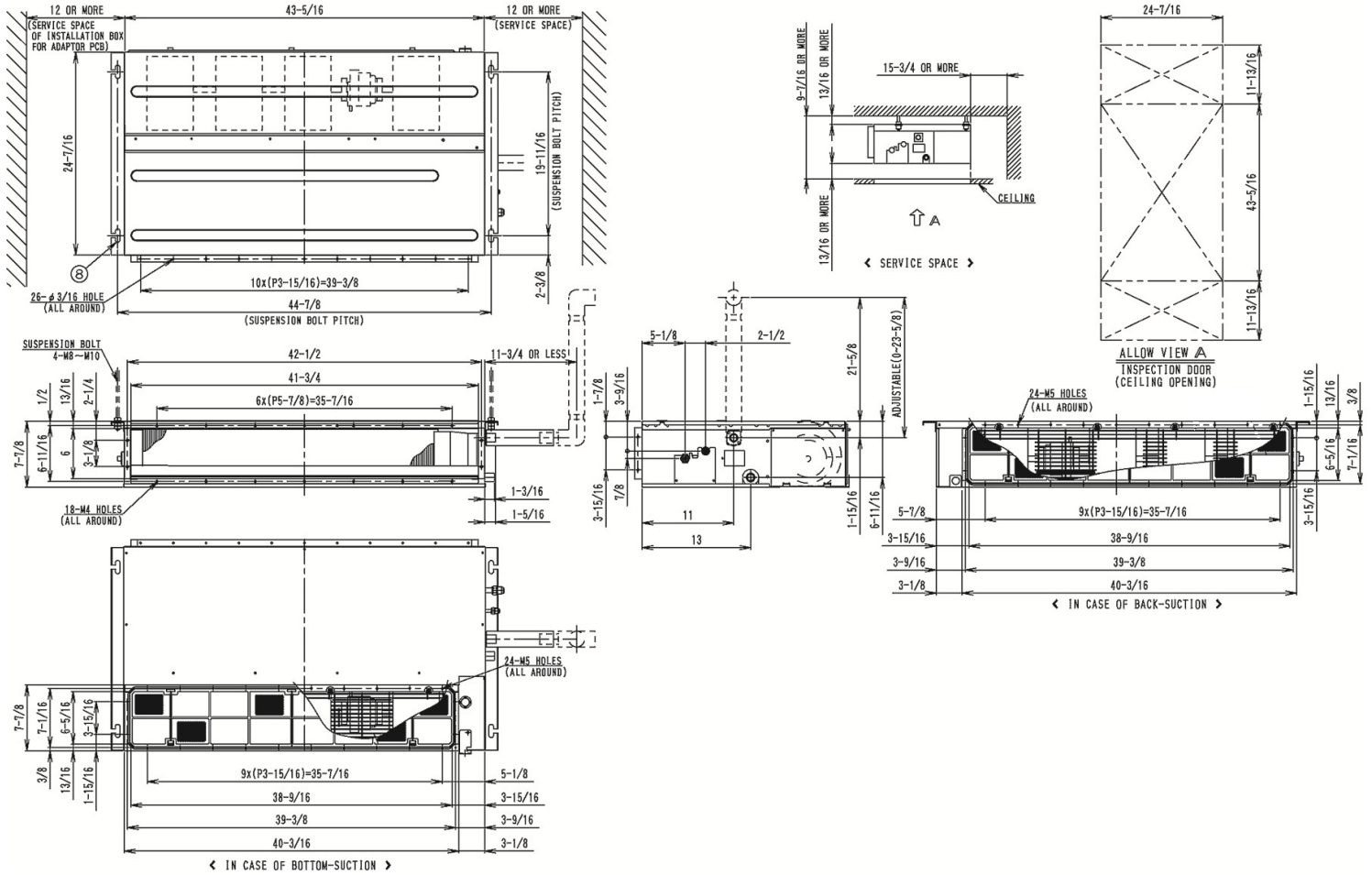
Project: HVAC MEMIC

Submitted by: David Chadwick of F W WEBB CO on 11/14/2017

Submitted to: No Engineer Name Specified

DIMENSIONAL DRAWING

FXDQ24MVJU
Unit (in.)





Submittal Data Sheet

Heat Recovery / Dual Module Multi Connection Piping Kit
BHFP26P100U

DESCRIPTION

The Condensing Unit Multi Connection Piping Kit provides a factory engineered method for the connection of multiple single modules to form a multi-module system within the refrigerant piping network.

FEATURES

- Engineered for uniform refrigerant flow and refrigerant distribution
- Designed with tube diameters (I.D. and O.D.) required for VRV system installations
- Installation of $\pm 15^\circ$ from horizontal
- Pre-formed clamshell style insulation^{1,2} for cleaner and reliable application
- Designed to help with smoother oil return



Note: Actual materials and sizes included may differ from photo



SPECIFICATIONS

Model No.:	BHFP26P100U		
Components Included:	Suction gas side joint, HP/LP side joint, liquid side joint, reducers, insulation and installation manual		
Unit Compatibility:	REYQ_TATJU, REYQ_TAYDU, REYQ_TAYCU and RELQ_TAYCU		
Unit Weight:	Estimated kit shipping weight: 9 lbs (4 kgs)		
Dimensions (W x H x D):	Refer to Dimensional Drawing and VRV Express Report		
Material / Finish:	Piping Material - ACR Copper Alloy C12200, Insulation Material ^{1,2} - Polypropylene		
# of Condensing Units ³ :	2		
	Suction Gas Side	HP/LP Gas Side	Liquid Side
# of Joints:	1	1	1
Joint Insulation Quantity:	1 pcs	1 pcs	1 pcs
Reducer Fitting ⁴ Quantity:	3 pcs	4 pcs	4 pcs
Piping Insulation Quantity:	2 pcs (large size)		1 pc (small size)

- Notes:**
- 1) In applications where installations are in an environment requiring fire-rated materials to be used, it is necessary for the installer to obtain from a third party supplier and to utilize, for insulation, fire-rated materials that meet all applicable building codes and other requirements. The Factory-provided insulation that is supplied with the kit should be discarded in a manner meeting all applicable laws.
 - 2) The insulation of the refrigerant piping must be reinforced based on the environment of the installation. Otherwise dew may condense on the surface of insulation.
 - 3) Refer to Engineering Data for any restrictions.
 - 4) Refer to Installation Manual for reducer fitting shapes and dimensions.

Daikin North America LLC, 5151 San Felipe, Suite 500, Houston TX, 77056
www.daikinac.com www.daikincomfort.com

(Daikin's products are subject to continuous improvements. Daikin reserves the right to modify product design, specifications and information in this data sheet without notice and without incurring any obligations).



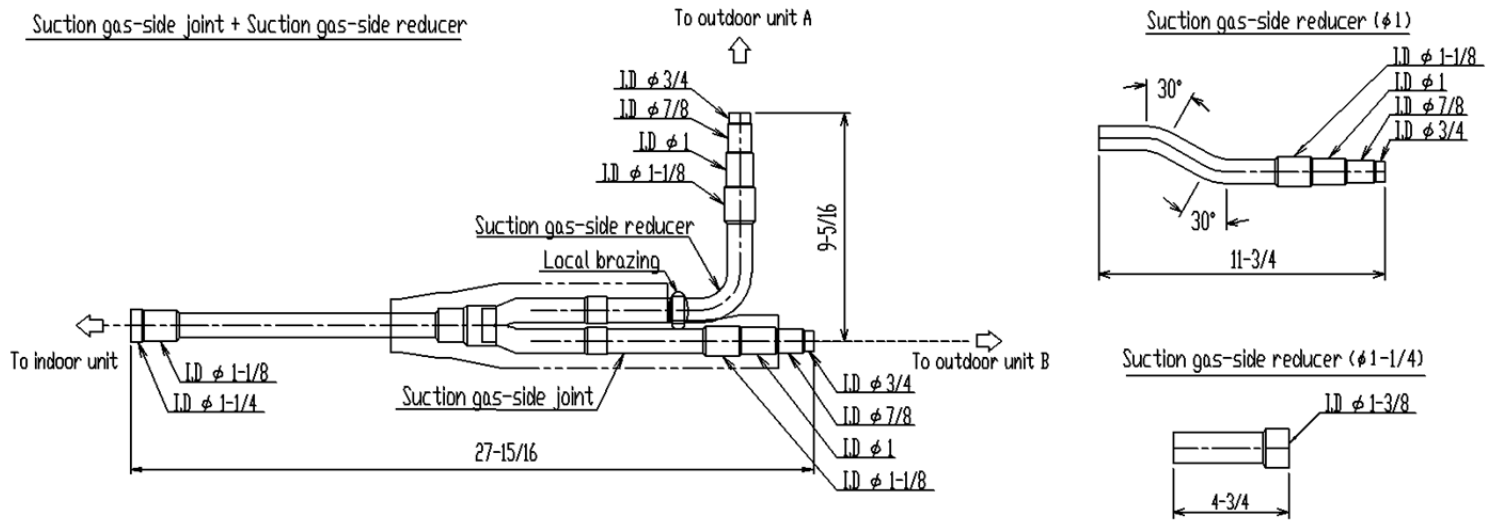
Submittal Data Sheet

Heat Recovery / Dual Module Multi Connection Piping Kit

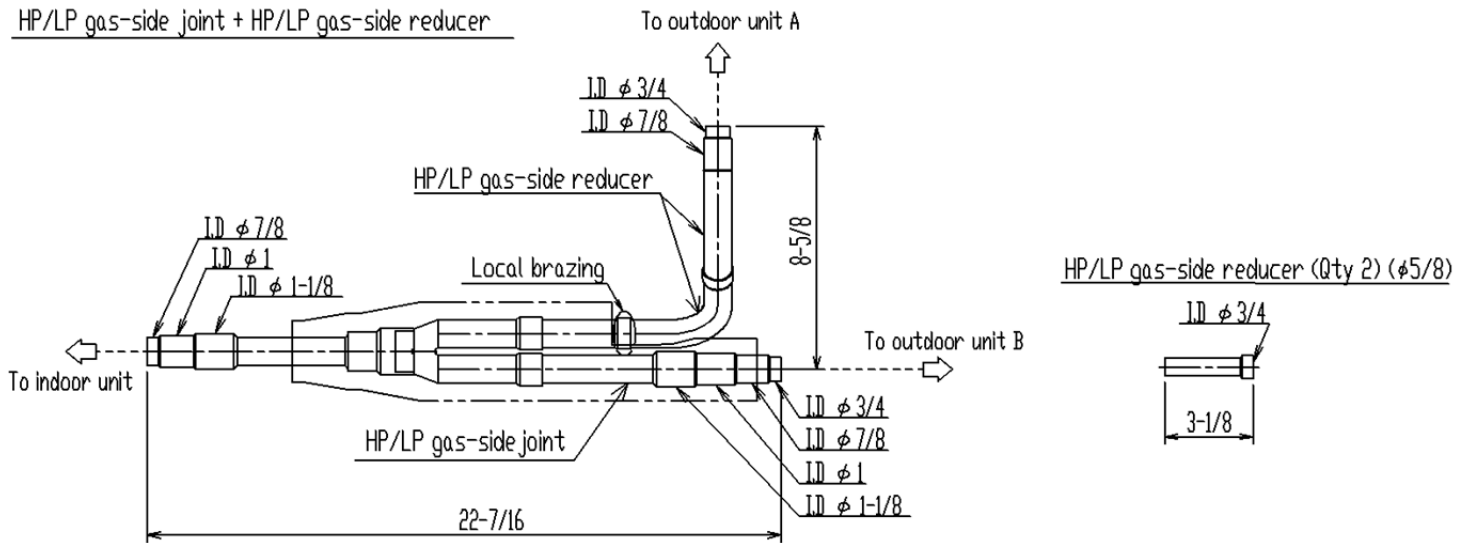
BHFP26P100U

DIMENSIONAL DRAWINGS*

Suction gas-side joint + Suction gas-side reducer



HP/LP gas-side joint + HP/LP gas-side reducer



*Refer to Installation Manual for detailed dimensional drawing

Daikin North America LLC, 5151 San Felipe, Suite 500, Houston TX, 77056
www.daikinac.com www.daikincomfort.com

(Daikin's products are subject to continuous improvements. Daikin reserves the right to modify product design, specifications and information in this data sheet without notice and without incurring any obligations).

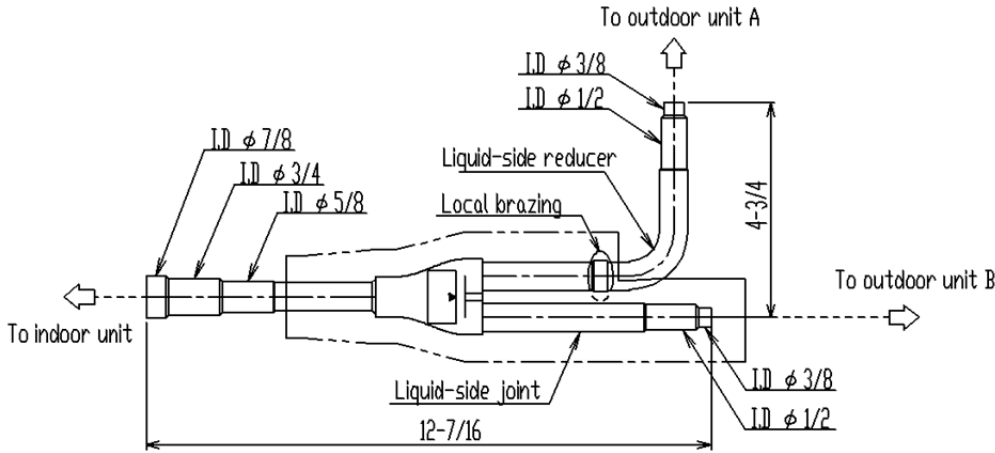


Submittal Data Sheet

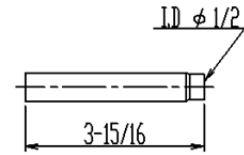
Heat Recovery / Dual Module Multi Connection Piping Kit
BHFP26P100U

DIMENSIONAL DRAWINGS*

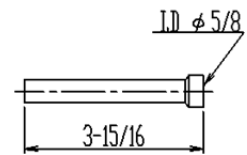
Liquid-side joint + Liquid-side reducer



Liquid-side reducer ($\phi 5/8$)

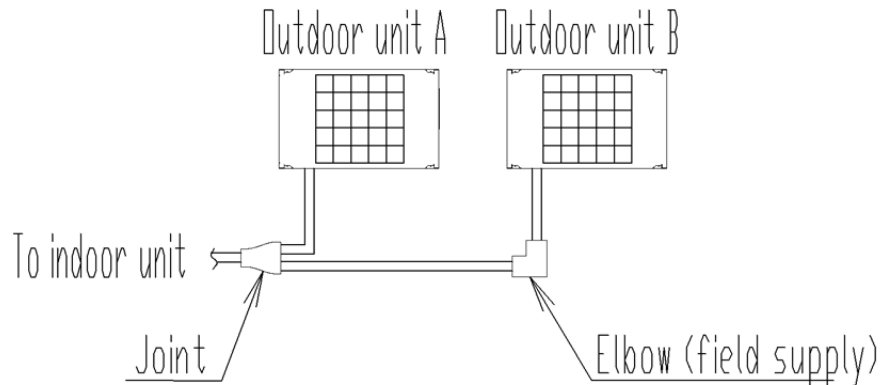


Liquid-side reducer (Qty 2) ($\phi 1/2$)



*Refer to Installation Manual for detailed dimensional drawing

TYPICAL INSTALLATION DRAWINGS (For Reference Only)



Layout drawing (top view)

Daikin North America LLC, 5151 San Felipe, Suite 500, Houston TX, 77056
www.daikinac.com www.daikincomfort.com

(Daikin's products are subject to continuous improvements. Daikin reserves the right to modify product design, specifications and information in this data sheet without notice and without incurring any obligations).

Project Name: _____

Location: _____

Engineer: _____

Submitted to: _____

Submitted by: _____

Reference: _____

Approval: _____

Date: _____

Construction: _____

Unit #: _____

Drawing #: _____

MODEL COMPATIBILITY:

Compatible with VRV indoor unit models: FXAQ, FXDQ, FXEQ, FXFQ, FXHQ, FXLQ, FXMQ, FXMQ_MF, FXNQ, FXSQ, FXTQ, FXUQ, FXZQ, VAM

Compatible with SkyAir indoor unit models: FAQ, FBQ, FCQ, FFQ, FHQ, FTQ

SPECIFICATIONS:

Model	BRC1E73
Description	Navigation Remote Controller
Maximum Connections	16 indoor units
Communication Wire	18AWG-2, No polarity Stranded, Non-shielded
Total Wiring Length	1,640 ft. (500 m)
Communication Protocol	Daikin proprietary P1P2 protocol
Power	16VDC supplied by indoor unit (1.58VA maximum)
Comfort Setpoint Range	60 to 90 °F (16 to 32 °C)
Setback Setpoint Range	40 to 95 °F (5 to 35°C)
Operating Temp Range	14 to 122°F (-10 to 50°C)
Operating Humidity Range	75% or less (RH) (without condensation)
Dimensions (WxHxD)	4.72x4.72x0.75 inch (120x120x19 mm)
Weight (Mass)	0.42 lbs. (0.19 kg)

PRODUCT IMAGE:



Notes:

- (1) 1 of 3 display options – Detailed display shown

FEATURES:

1. Up to 16 indoor units are controllable within one group
2. Within one group, up to 2 Navigation Remote Controllers can be used, one as a main and one as a sub
3. Backlit LCD displays in English, Spanish or French
4. Temperature sensor built-in with configurable offset
5. Display of Temperature and Setpoint in 1°F / °C increments
6. Three configurable display options: Detailed, Standard and Simple
7. Dual setpoints (independent cooling and heating setpoints) with configurable minimum setpoint differential or Single Setpoint (occupied period)
8. Setpoint range limit for cooling and heating modes
9. Independent cooling and heating setback setpoints (unoccupied period)
10. Auto changeover control with configurable primary and secondary changeover dead bands and guard timer

Daikin North America LLC, 5151 San Felipe, Suite 500, Houston TX, 77056

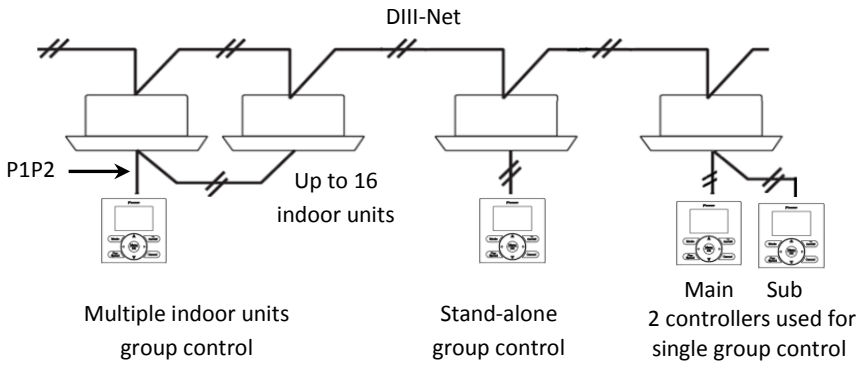
www.daikinac.com www.daikincity.com

Project Name: _____	Approval: _____
Location: _____	Date: _____
Engineer: _____	Construction: _____
Submitted to: _____	Unit #: _____
Submitted by: _____	Drawing #: _____
Reference: _____	

11. Airflow – Individual air flow direction, dual airflow and auto draft prevention (prevents air blowing directly on occupants)*
12. Built-in 7 days, weekdays+weekend, weekdays+Sat+Sun, and Everyday schedules with up to 5 actions per day with independent cooling and heating or setback setpoints
13. Automatic Setback by occupancy sensor*
14. Automatic Off by occupancy sensor*
15. Configuration for Self-cleaning filter panel**
16. Automatic adjustment for Daylight Savings Time (DST)
17. 48 hour clock/calendar battery backup (protects schedule timing in cases of short term power loss from indoor unit)
18. Real-time monitoring of system malfunctions with immediate display of unit in error and error code
19. The buttons on the remote controller are selectable by locking out the unwanted buttons
20. The operation modes can be restricted to provide only the desired mode(s) of operation
21. Display can be configured to show “Off” and room temperature only when indoor unit is turned off
22. To prevent unwanted changes, fan speed selection and display may be hidden
23. Auto off timer configurable in 10 minute increments (range 30-180 minutes)
24. Can be used to replace earlier versions of remote controllers

* Available for FXFQ_TVJU, FXUQ_PVJU, and FXZQ_TA indoor units
 **Available for FXFQ_TVJU indoor units

SYSTEM DIAGRAM:



FACE DECAL OPTIONS:

Face decal options are used to hide unnecessary buttons:

1. The face decal is designed to adhere to the BRC1E faceplate
2. Hidden buttons can be accessed by service personnel without removing the face decal due to its flexibility









Daikin North America LLC, 5151 San Felipe, Suite 500, Houston TX, 77056
www.daikinac.com www.daikincity.com

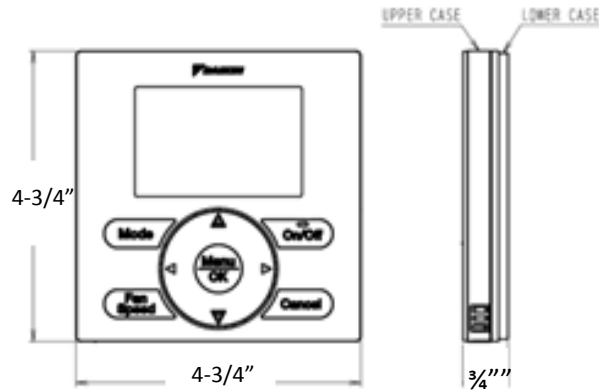
Submittal Data Sheet

BRC1E73 – Navigation Remote Controller

Project Name: _____	Approval: _____
Location: _____	Date: _____
Engineer: _____	Construction: _____
Submitted to: _____	Unit #: _____
Submitted by: _____	Drawing #: _____
Reference: _____	

Used with	Single Setpoint mode			Dual Setpoint mode		
	BRC1E72RM	BRC1E72RF	BRC1E72RMF	BRC1E72RM2	BRC1E72RF2	BRC1E72RMF2
Model						
On/Off	X	X	X	X	X	X
Mode	X		X	X		X
Fan		X	X		X	X
Up, Down	X	X	X	X	X	X
Left, Right				X	X	X
Menu/Ok						
Cancel						

DIMENSIONS:



DOCUMENTATION:

Documentation available on www.daikincity.com and/or www.daikinac.com:

- Installation Manual
- Operation Manual
- Submittal
- Guide Specifications
- Quick User Guide
- Field Setting Table

Daikin North America LLC, 5151 San Felipe, Suite 500, Houston TX, 77056
www.daikinac.com www.daikincity.com

(Daikin's products are subject to continuous improvements. Daikin reserves the right to modify product design, specifications and information in this data sheet without notice and without incurring any obligations)



Submittal Data Sheet

16 Ton, 230V, VRV IV HR - REYQ192TATJU

Project: HVAC MEMIC

Submitted by: David Chadwick of F W WEBB CO on 11/14/2017

Submitted to: No Engineer Name Specified

FEATURES

- Larger capacity single modules ranging up to 14 tons and systems up to 38 tons allow for a more flexible system design
- Variable Refrigerant Temperature (VRT) control allows the VRV IV to deliver up to 28% of improvement in seasonal cooling efficiency compared to previous Daikin VRV heat pump systems
- Modular and lightweight enables flexibility in system layout and installation with larger capacity single modules reducing electrical, piping connections
- Compatible with Daikin DVS series of Dedicated Outdoor Air Systems (DOAS)
- System wide auto-climate adjustment technology to increase the energy efficiency
- Improved efficiency with IEER values now up to 29.3
- Can provide heating down to -13°F WB as standard
- All inverter compressors to increase the efficiency and avoid starting current inrush
- Same product structure for 230V and 460V simplifies ordering
- New configurator software designed to simplify the commissioning and maintenance of the system
- Factory standard coil guards
- Assembled in the US to increase flexibility and reduce lead times
- Standard Limited Warranty: 10-year limited parts warranty



VRV IV



BENEFITS

- Can operate up to 33 indoor units on a single piping network
- Modular and lightweight - enables flexibility in system layout and installation
- Refrigerant cooled inverted technology to avoid influence from ambient temperatures
- Integrated inverter technology deliver maximum efficiency during part load conditions and provide precise individual zone control
- Heat exchanger coil wraps around on all 4 sides of the unit to increase the surface area and efficiency
- Continuous heating during defrost and oil return allows constant comfort
- Corrosion resistance 1000hr salt spray tested Daikin PE blue fin heat exchanger
- Design flexibility with long piping lengths up to 3,280 ft. total and 100 ft. vertical separation between indoor units
- Designed with reduced MOP to optimize installation cost
- Digital display on the unit for improved and faster configuration, commissioning, and trouble shooting



Submittal Data Sheet

16 Ton, 230V, VRV IV HR - REYQ192TATJU

Project: HVAC MEMIC

Submitted by: David Chadwick of F W WEBB CO on 11/14/2017

Submitted to: No Engineer Name Specified

PERFORMANCE

Outdoor Unit Model No.	REYQ192TATJU	Outdoor Unit Name:	16 Ton, 230V, VRV IV HR
Type:	Heat Recovery	Unit Combination:	REYQ72TATJU + REYQ120TATJU
Rated Cooling Conditions:	Indoor (°F DB/WB): 80 / 67 Ambient (°F DB/WB): 95 / 75	Rated Heating Conditions:	Indoor (°F DB/WB): 70 / 60 Ambient (°F DB/WB): 47 / 43
Rated Piping Length(ft):			
Rated Height Difference (ft):			
Rated Cooling Capacity (Btu/hr):	180,000	Rated Heating Capacity (Btu/hr):	200,000
Nom Cooling Capacity (Btu/hr):	192,000	Nom Heating Capacity (Btu/hr):	216,000
Cooling Input Power (kW):	13.90	Heating Input Power (kW):	15.30
EER (Non-Ducted/Ducted):	12.50 / 12.50	Heating COP (Non-Ducted/Ducted):	3.9 / 3.7
IEER (Non-Ducted/Ducted):	22.90 / 21.10	Heating COP 17F (Non-Ducted/Ducted):	2.4 / 2.3
		SCHE (Non-Ducted/Ducted):	26.60 / 23.10

OUTDOOR UNIT DETAILS

Power Supply (V/Hz/Ph):	208-230 / 60 / 3	Compressor Stage:	Inverter
Power Supply Connections:	L1, L2, L3 Ground	Capacity Control Range (%):	5 - 100
Min. Circuit Amps MCA (A):	30.2+43.0	Capacity Index Limit:	96.0 - 249.0
Max Overcurrent Protection (MOP) (A):	35+50	Airflow Rate (H) (CFM):	5544+6286
Max Starting Current MSC(A):		Gas Pipe Connection (inch):	1-1/8
Rated Load Amps RLA(A):	20.7+(15.0+15.0)	Liquid Pipe Connection (inch):	5/8
Dimensions (Height) (in):	66-11/16	H/L Pressure Connection (inch)	1-1/8
Dimensions (Width) (in):	36-11/16+48-7/8	H/L Equalizing Connection (inch)	
Dimensions (Depth) (in):	30-3/16	Sound Pressure (H) (dBA):	63
Net Weight (lb):	507+703	Sound Power Level (dBA):	83
		Max. No. of Indoor Units:	33

Submittal Data Sheet

16 Ton, 230V, VRV IV HR - REYQ192TATJU

Project: HVAC MEMIC

Submitted by: David Chadwick of F W WEBB CO on 11/14/2017

Submitted to: No Engineer Name Specified

SYSTEM DETAILS

Refrigerant Type:	R-410A	Cooling Operation Range (°F DB):	23 - 122
Holding Refrigerant Charge (lbs):	21.9+25.8	Heating Operation Range (°F WB):	-13 - 60
Additional Charge (lb/ft):		Max. Pipe Length (Vertical) (ft):	295
Pre-charge Piping (Length) (ft):		Cooling Range w/Baffle (°F DB):	-
Max. Pipe Length (Total) (ft):	540	Heating Range w/Baffle (°F WB):	-
Max Height Separation (Ind to Ind ft):			

DIMENSIONAL DRAWING

