

GRANT HAYS
ASSOCIATES

ARCHITECTURE & INTERIOR DESIGN
P.O. BOX 6179 FALMOUTH MAINE 04105
207.871.5900 www.granthays.com

SCALE



Michael F. Hays

REV/NOV

- ▲ 1.7.17
- ▲ 1.2.19.17
- ▲ 1.15.18
- ▲ 1.23.18

DRAWING NAME

MEMIC RENOVATION TO THE SECOND FLOOR OFFICES
245 COMMERCIAL ST. PORTLAND, MAINE 04101

1/2 SHEET

INTERIOR ELEVATIONS

DATE 26 OCT 2017

SCALE 1/4"=1'-0"

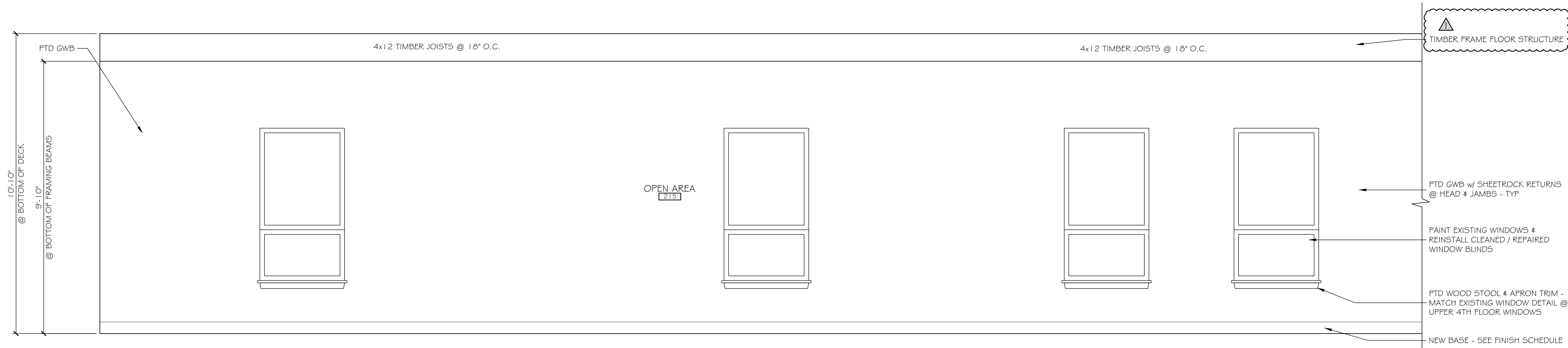
DRAWN MFF/mgk

JOB NO. 170831

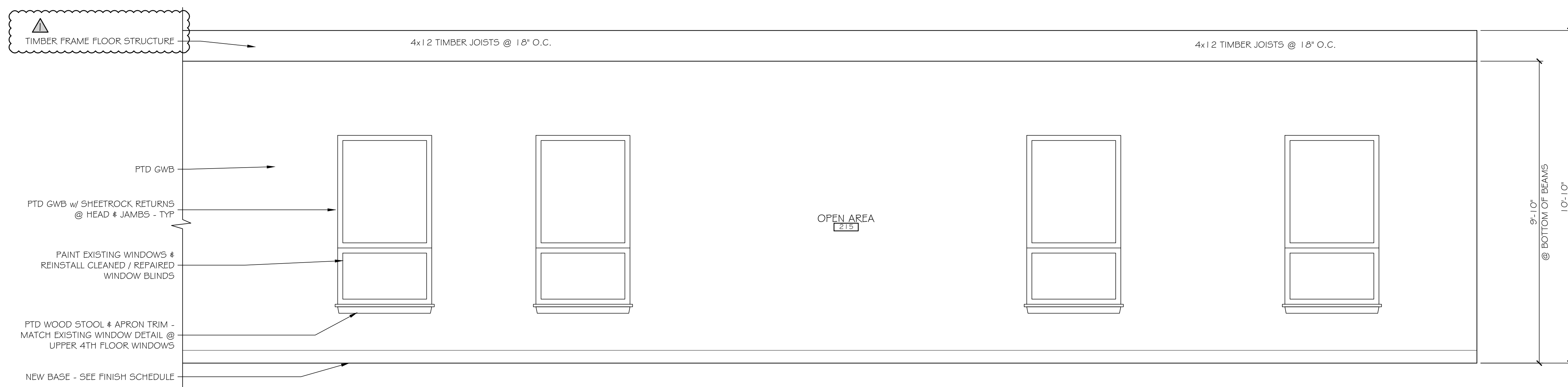
1/2 SHEET

A-11

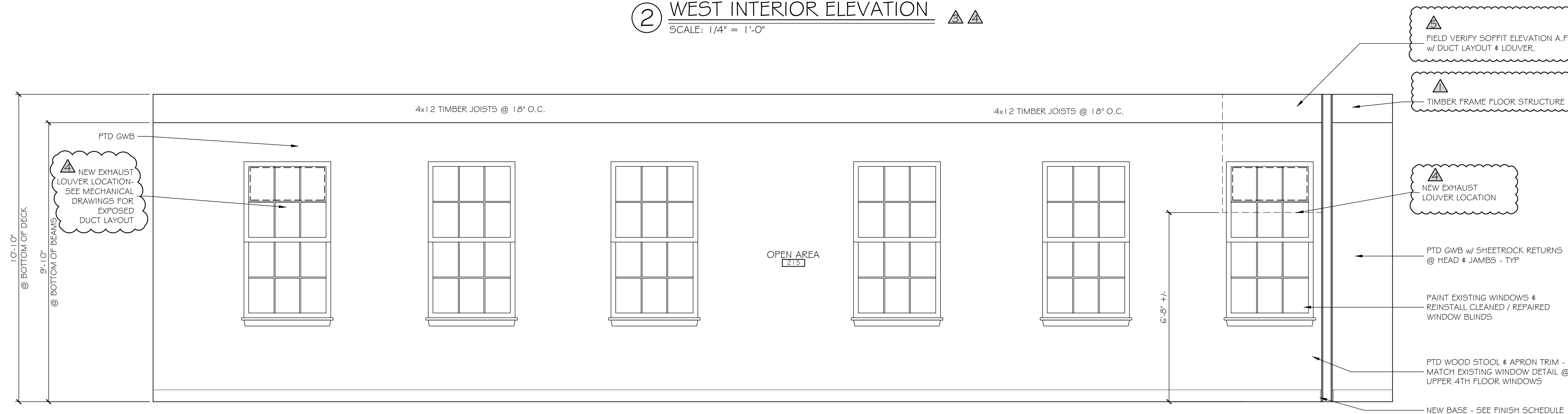
COPYRIGHT REPRODUCTION OR REV. OF THIS DOCUMENT WITHOUT WRITTEN PERMISSION FROM GRANT HAYS ASSOCIATES IS PROHIBITED.



① WEST INTERIOR ELEVATION ▲▲
SCALE: 1/4" = 1'-0"



② WEST INTERIOR ELEVATION ▲▲
SCALE: 1/4" = 1'-0"



③ ALLEYWAY INTERIOR ELEVATION ▲▲
SCALE: 1/4" = 1'-0"