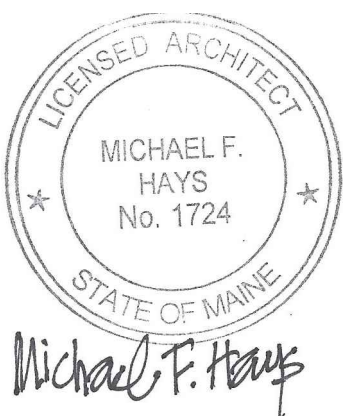


GRANT HAY
ASSOCIATES

ARCHITECTURE & INTERIOR DESIGN
P.O. BOX 6179 FALMOUTH MAINE 04105
207.871.5900 www.granthays.com



REVISION

DRAWING NAME

MEMIC
RENOVATION TO THE
SECOND FLOOR OFFICES
PORTLAND, MAINE 04101
245 COMMERCIAL ST.

SHEET

DOORS,
PARTITION
& DETAILS

DATE
15/EP 2017

SCALE
AS NOTED

DRAWN
MFH/mgk

JOB NO.
170831

SHEET

A-7

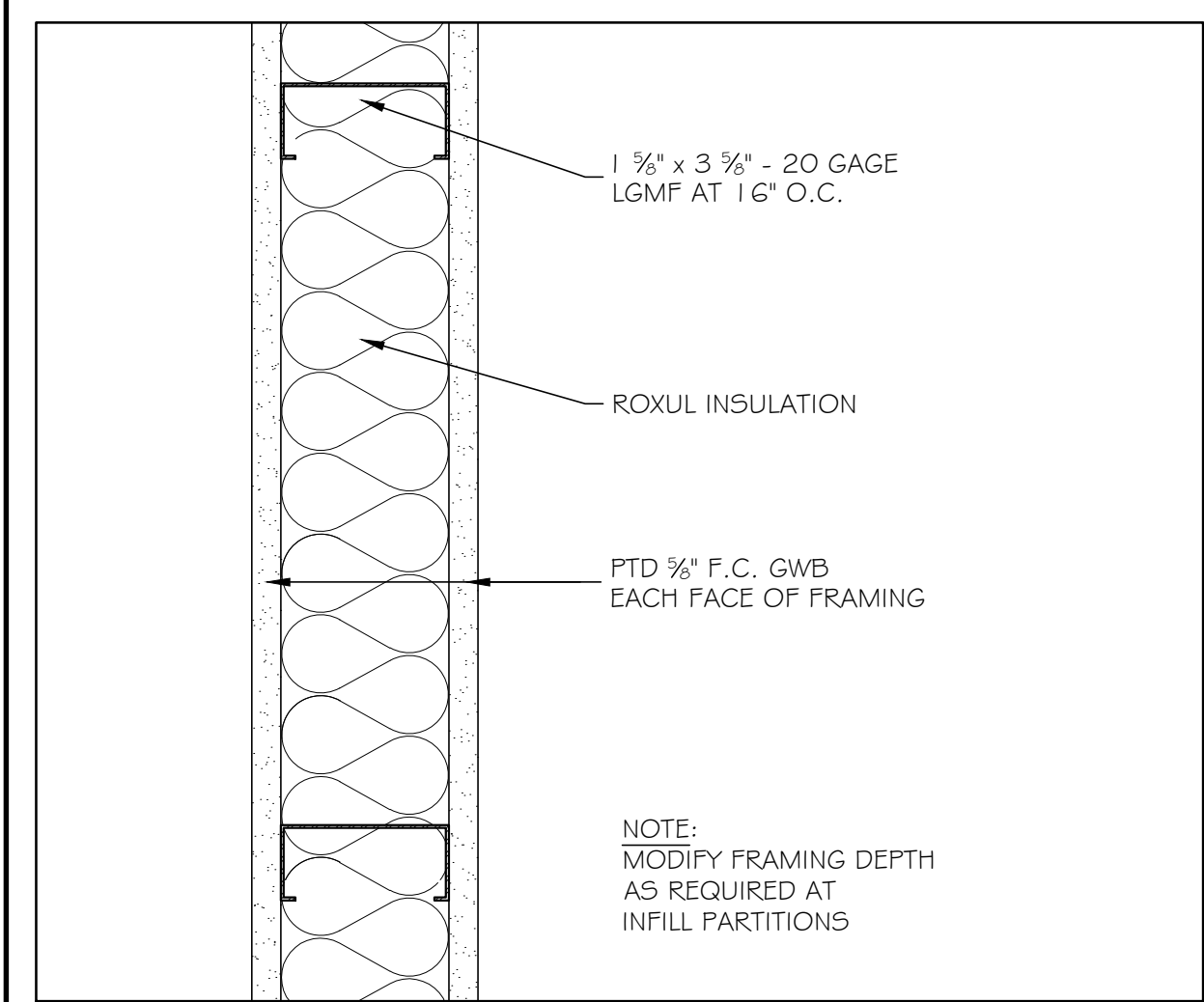
COPYRIGHT
REPRODUCTION OR REV. OF THIS
DOCUMENT WITHOUT WRITTEN
PERM./NOT FROM GRANT HAY
ASSOCIATES IS PROHIBITED.

DOOR SCHEDULE

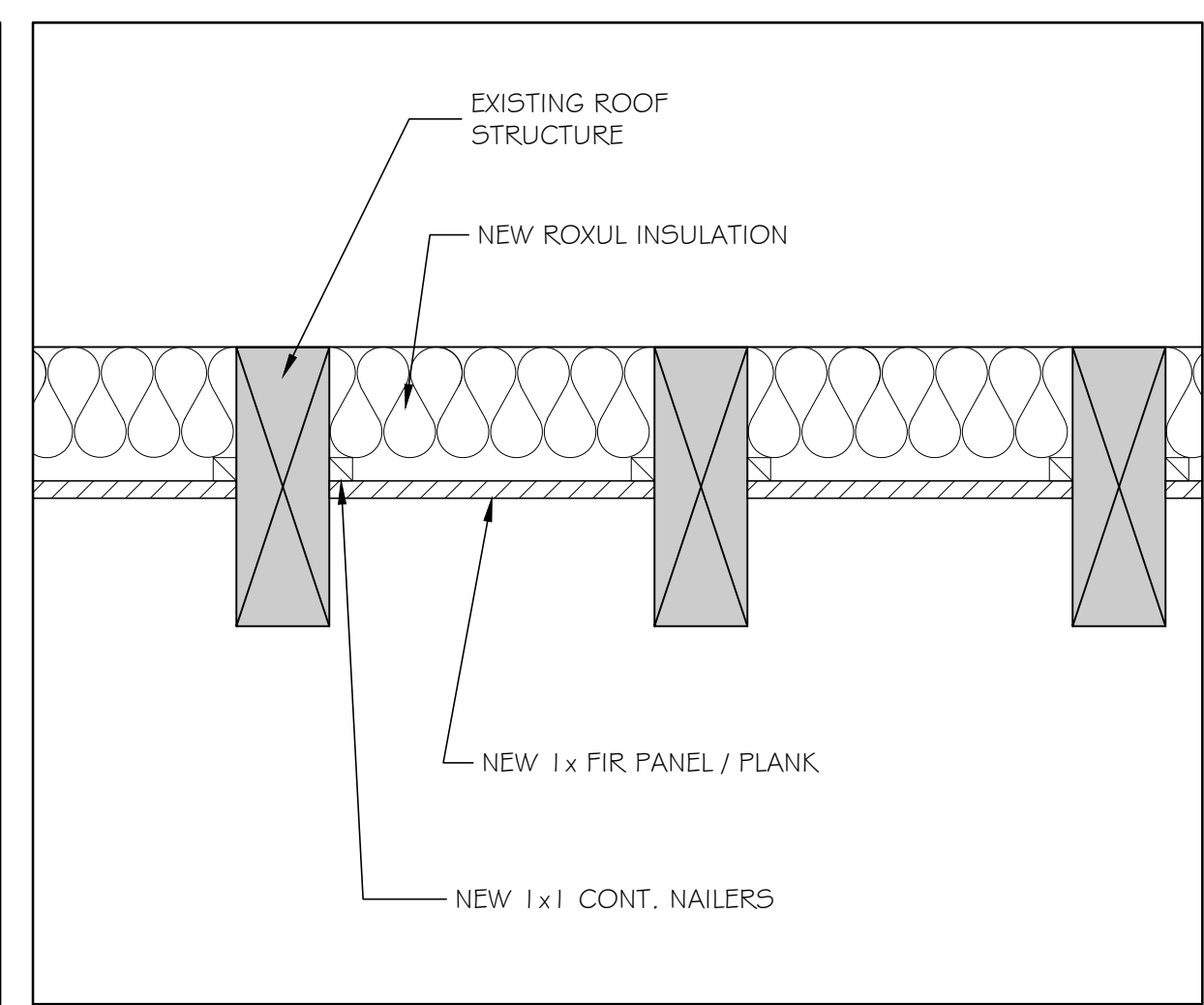
ABBREVIATIONS

AL	ALUMINUM	HM	ROLL METAL	V	VINYL
DW	DRYWALL	INSUL	INSULATED	W	WIRE
(E)	EXISTING	SS	STAINLESS STEEL	WD	WOOD
ES	EDGE STRIP	T	TEMPERED	W/J	WOOD WITH
EMHO	ELECTRO MAGNETIC HOLD OPENER GLASS	TB	THERMAL BREAK	TI	THERMAL INSULATED
GL	GLASS	TS	TRANSITION STRIP		

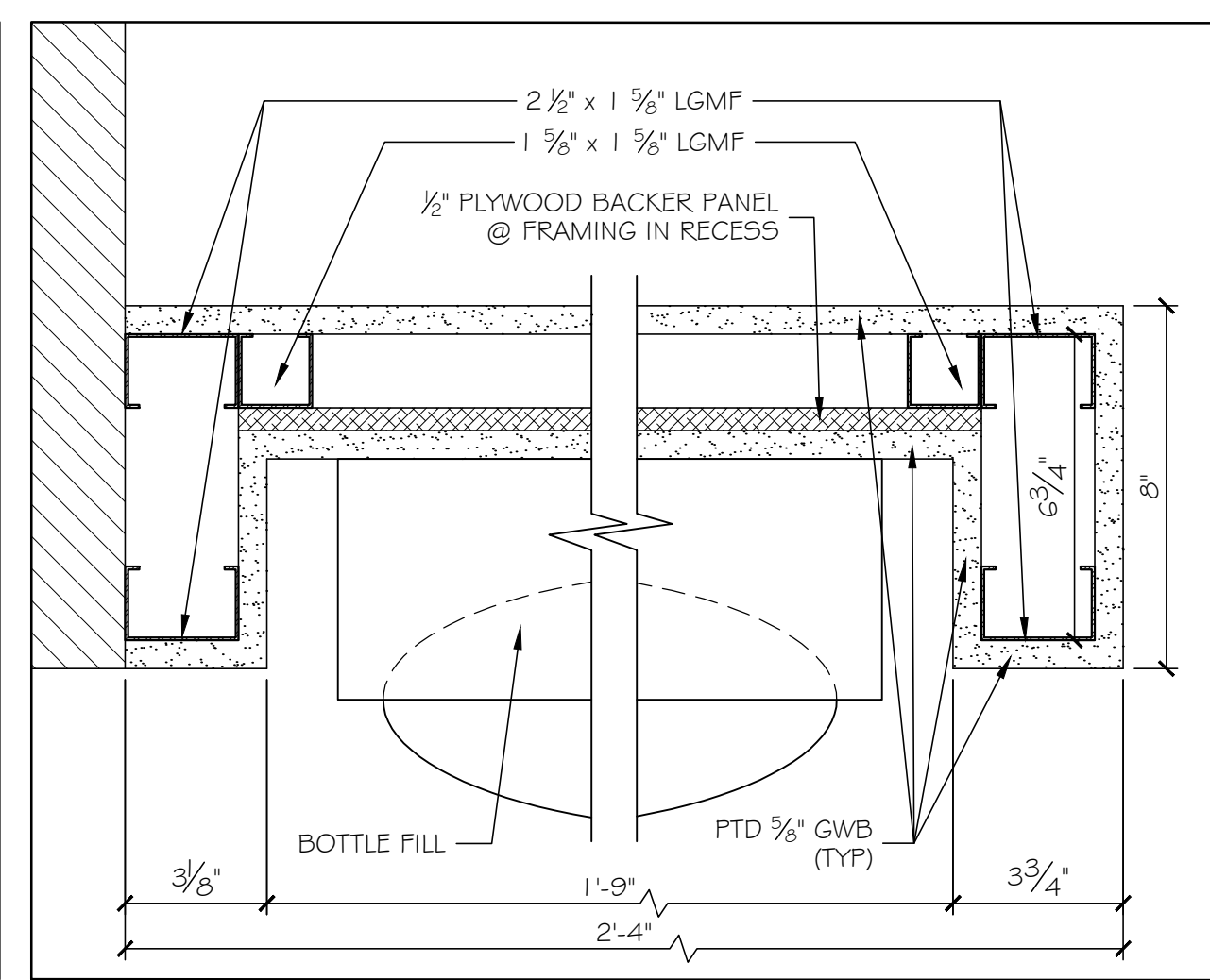
NO.	TYPE	SIZE (w x h)	THK	INSUL	HDWE	FR	GLASS TYPE	GLASS SIZE	REMARKS	FRAMES			THRESHOLDS		
										FR	PROFILE	DETAILS HEAD	DETAILS JAMB	MATERIAL	DETAILS SILL
201	A	3070	MFGR	---	HW-I	---	TEMP	FULL	BY DIRT	MFGR	---	---	---	---	---
202	A	3680	MFGR	---	HW-I	---	TEMP	FULL	BY DIRT	MFGR	---	---	---	---	---
203	A	3680	MFGR	---	HW-I	---	TEMP	FULL	BY DIRT	MFGR	---	---	---	---	---
204	A	3680	MFGR	---	HW-I	---	TEMP	FULL	BY DIRT	MFGR	---	---	---	---	---
205	A	3680	MFGR	---	HW-I	---	TEMP	FULL	BY DIRT	MFGR	---	---	---	---	---
206	A	3680	MFGR	---	HW-I	---	TEMP	FULL	BY DIRT	MFGR	---	---	---	---	---
E201	(E)	---	---	---	---	---	---	---	---	(E)	(E)	(E)	---	---	---
E202	(E)	---	---	---	---	---	---	---	---	(E)	(E)	(E)	---	---	---
E203	(E)	---	---	---	---	---	---	---	---	(E)	(E)	(E)	---	---	---
E204	(E)	---	---	---	---	---	---	---	---	(E)	(E)	(E)	---	---	---
E205	(E)	---	---	---	---	---	---	---	---	(E)	---	(E)	---	---	---
E206	(E)	---	---	---	---	---	---	---	---	(E)	---	(E)	---	---	---
E207	(E)	---	---	---	---	---	---	---	---	(E)	---	(E)	---	---	---
E208	(E)	---	---	---	---	---	---	---	---	(E)	---	(E)	---	---	---
E209	(E)	---	---	---	---	---	---	---	---	(E)	(E)	(E)	---	---	---



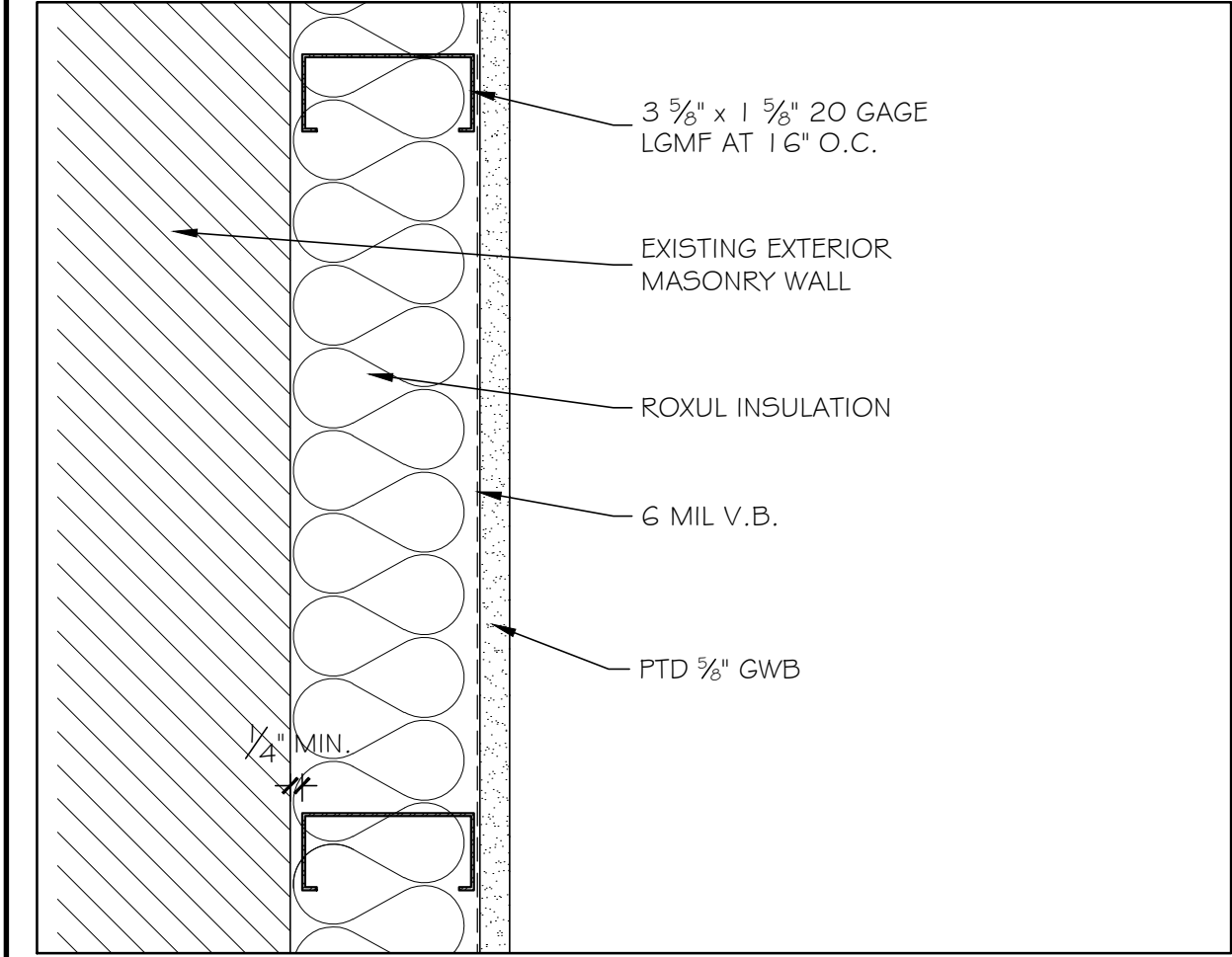
1 INTERIOR PARTITION TYPE 3" = 1'-0"



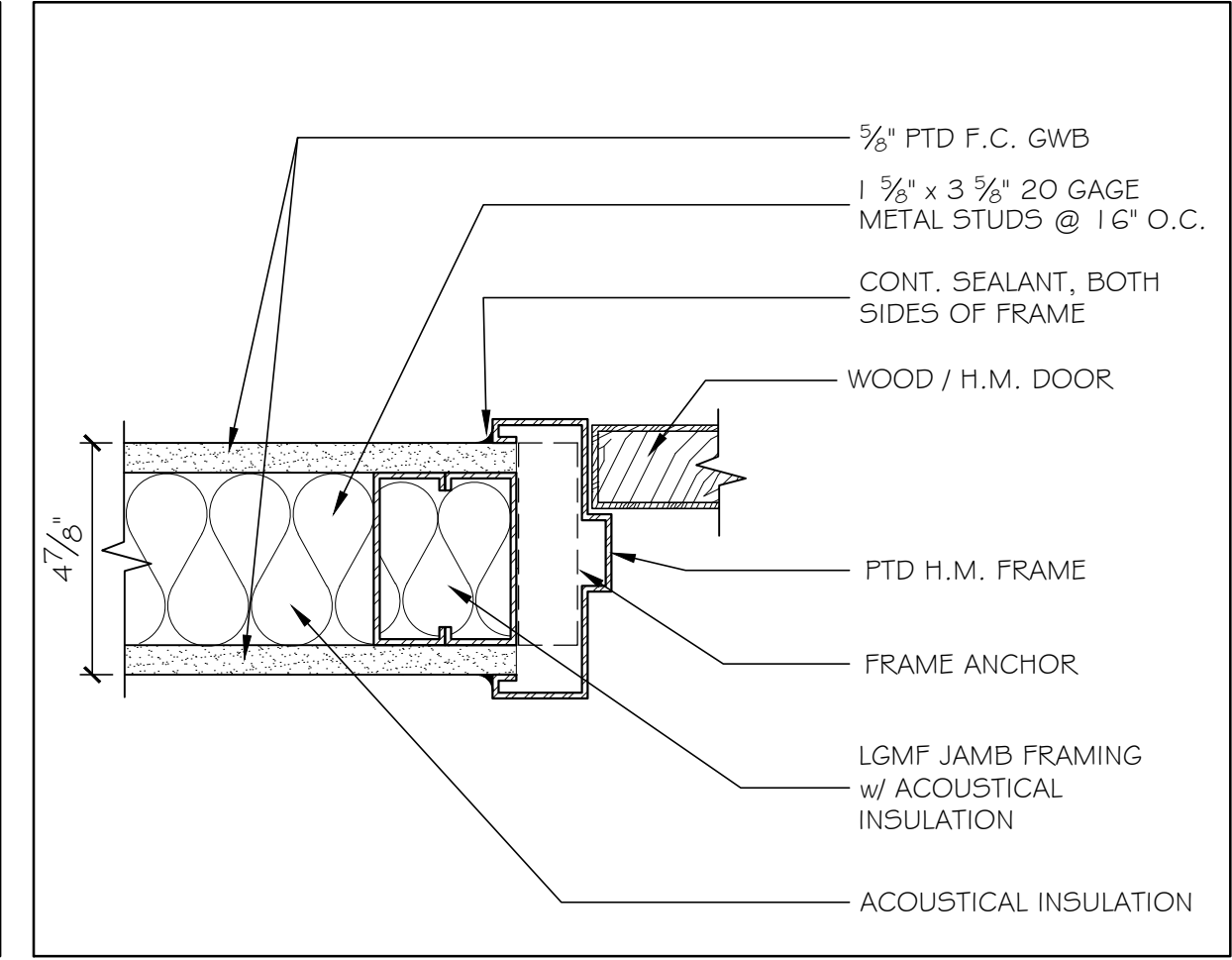
5 NEW INSULATED FRAMING DETAIL 1/2" = 1'-0"



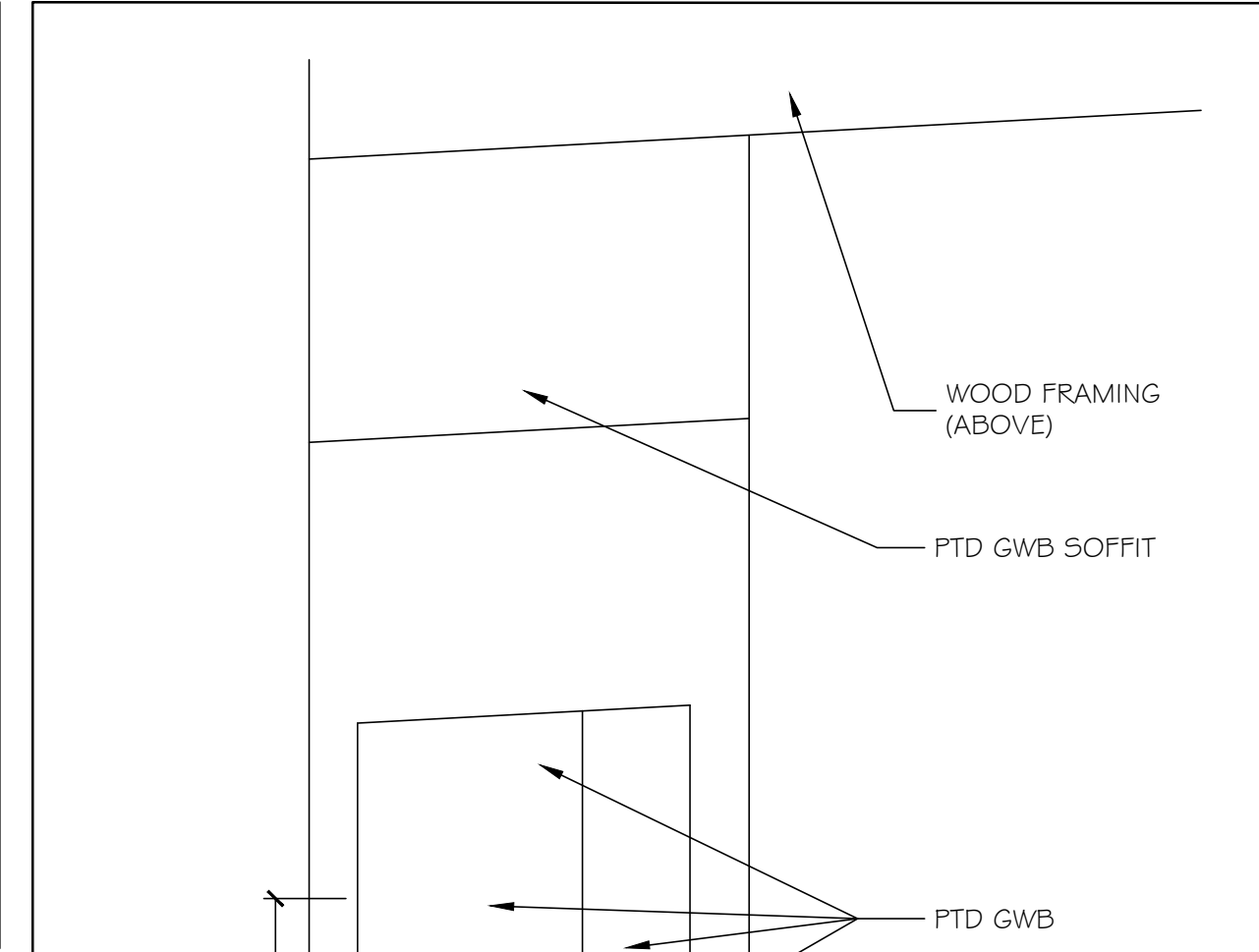
3 PLAN DETAIL AT BOTTLE FILL 3" = 1'-0"



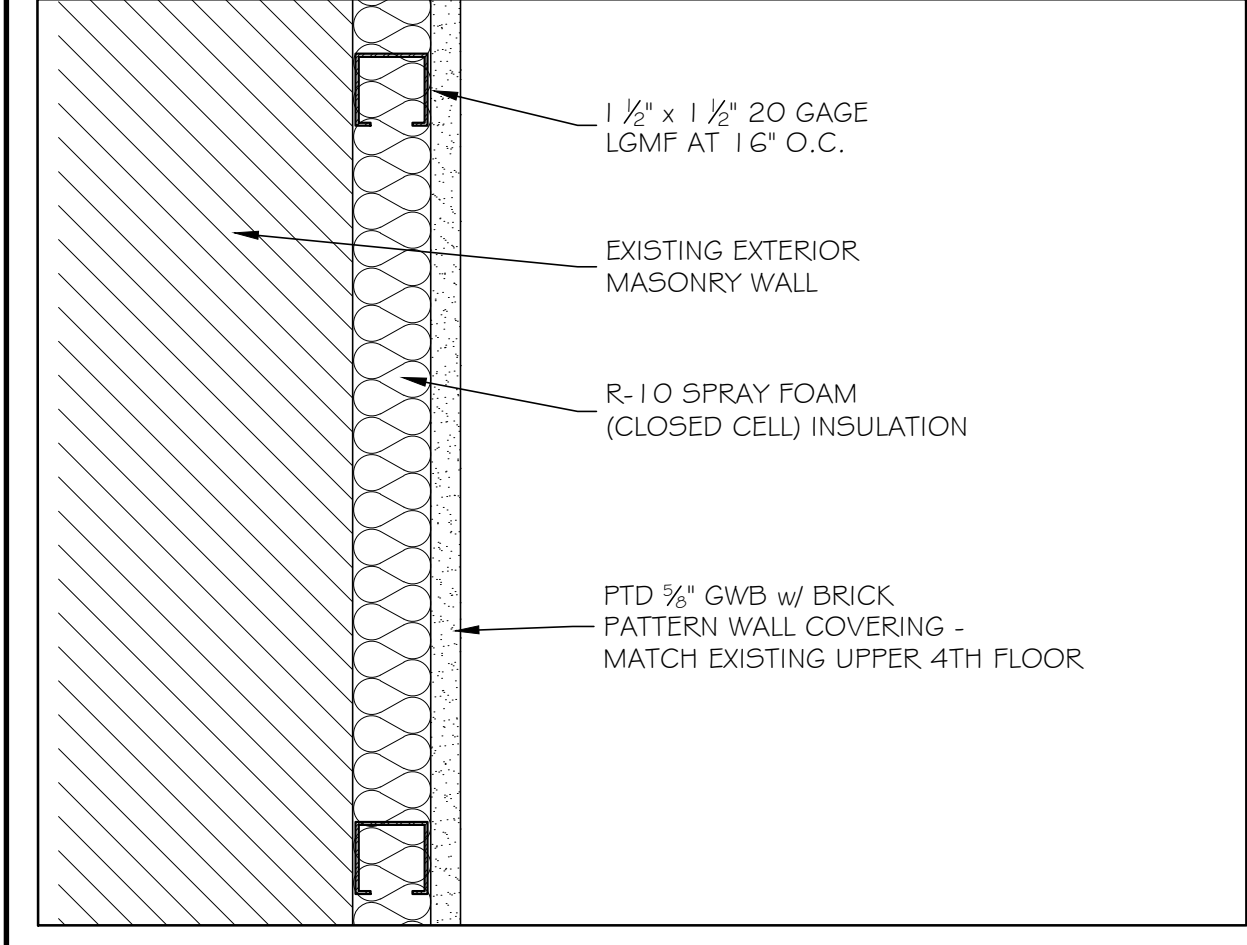
2 INTERIOR PARTITION TYPE 3" = 1'-0"



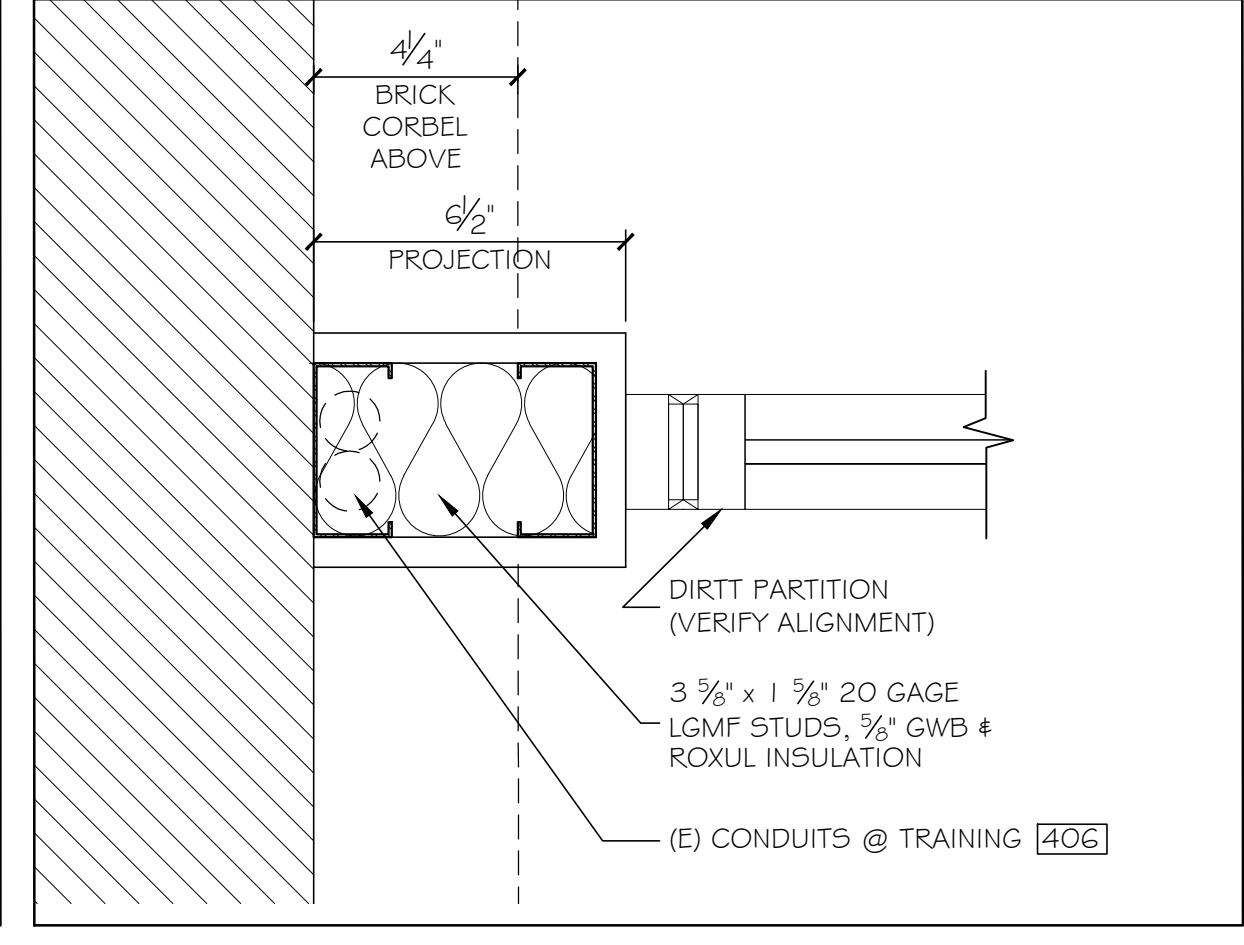
6 JAMB (HEAD SIM) AT INT. H.M. DOOR 3" = 1'-0"



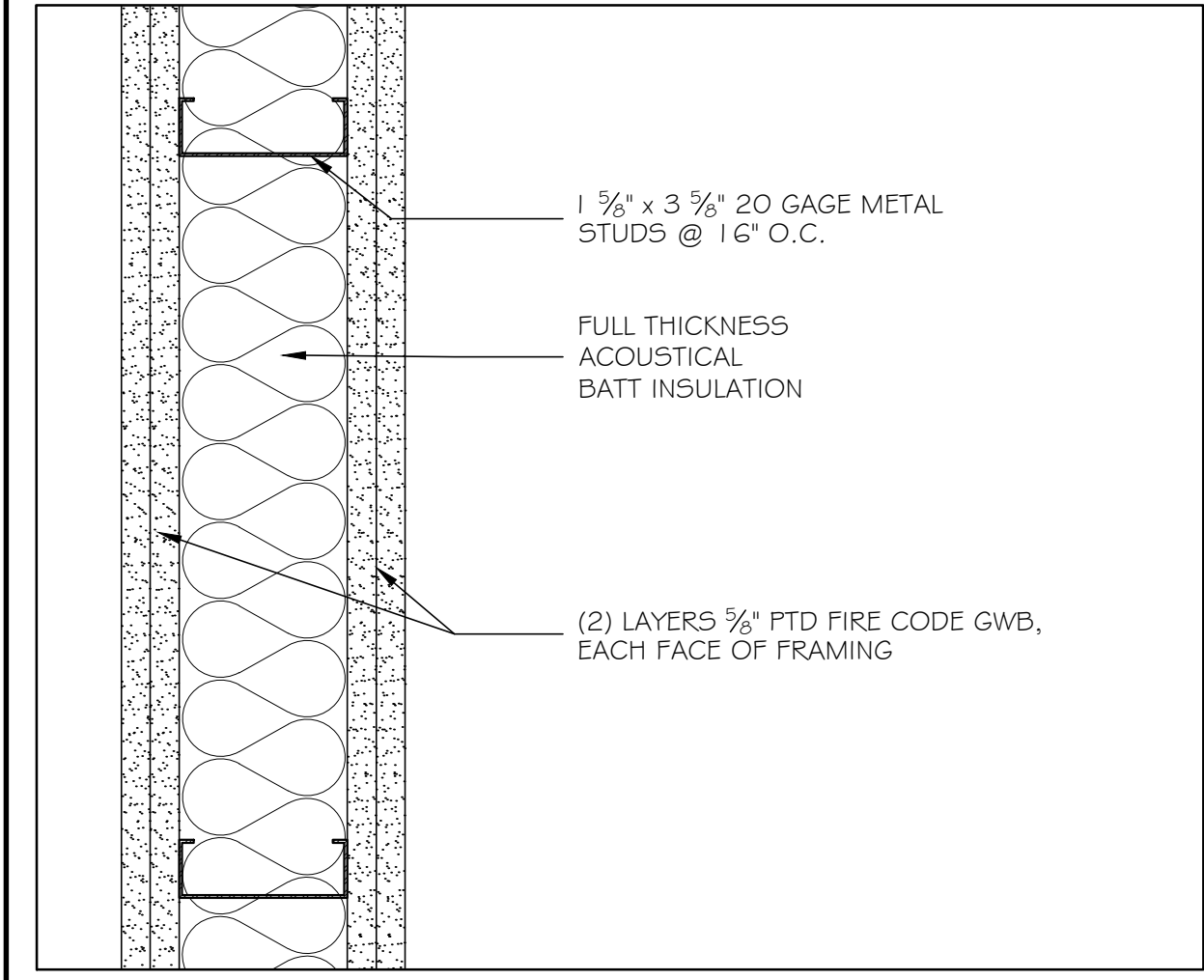
4 RECESS AT BOTTLE FILL N.T.S.



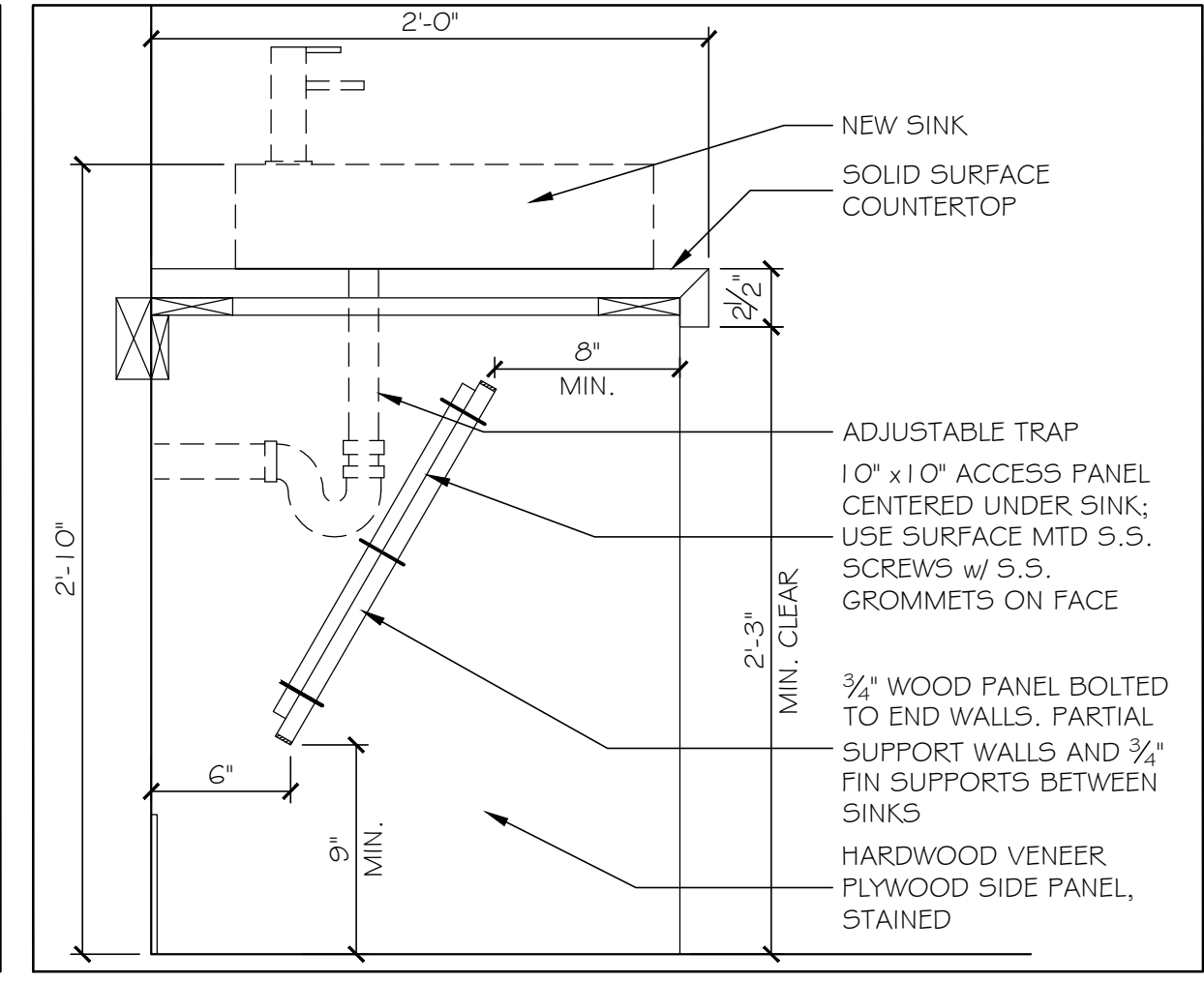
3 INTERIOR PARTITION TYPE 3" = 1'-0"



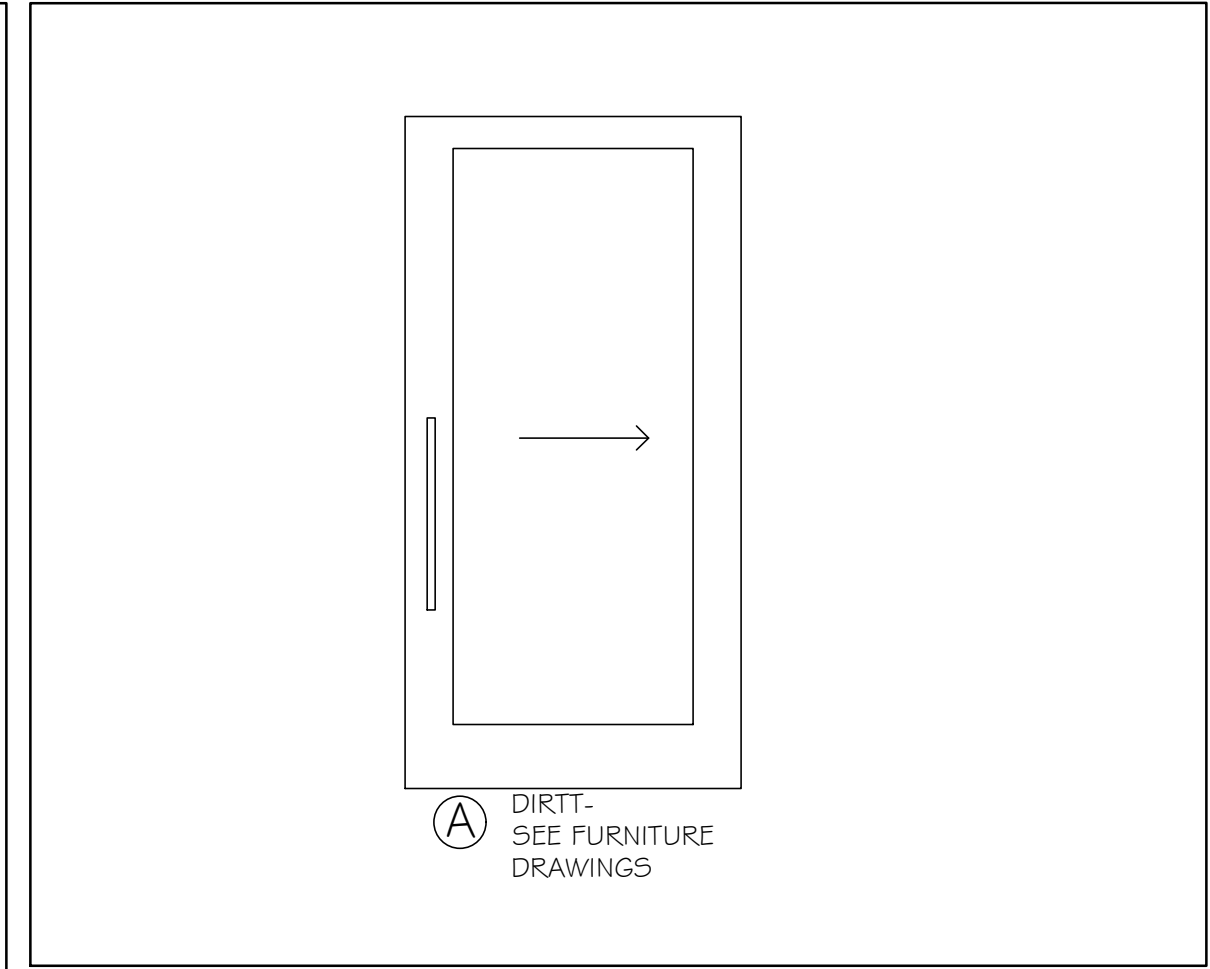
7 JAMB DETAIL @ DIRT SYSTEM 3" = 1'-0"



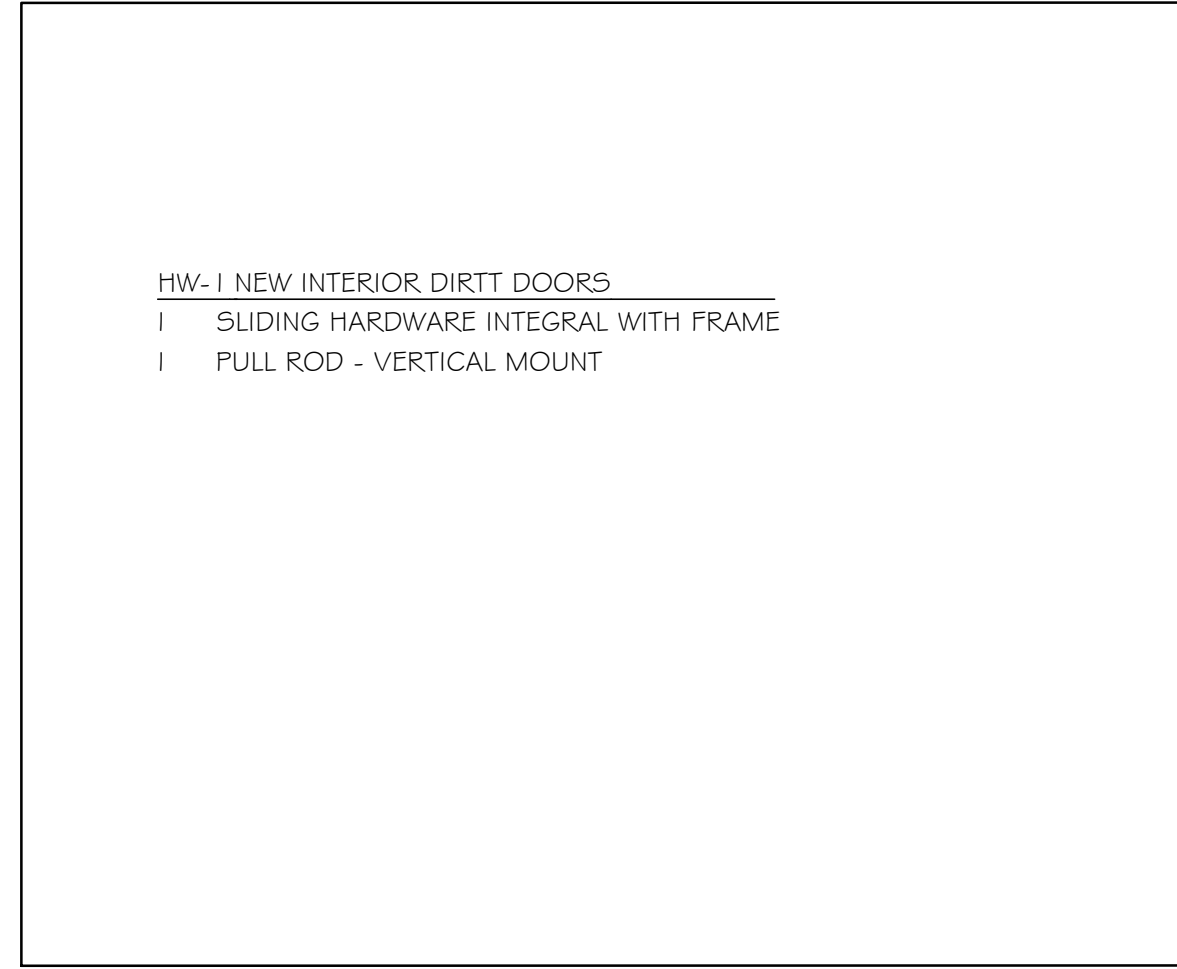
4 2 HOUR RATED WALL 3" = 1'-0"



8 BATHROOM @ ADA SINK 1/2" = 1'-0"



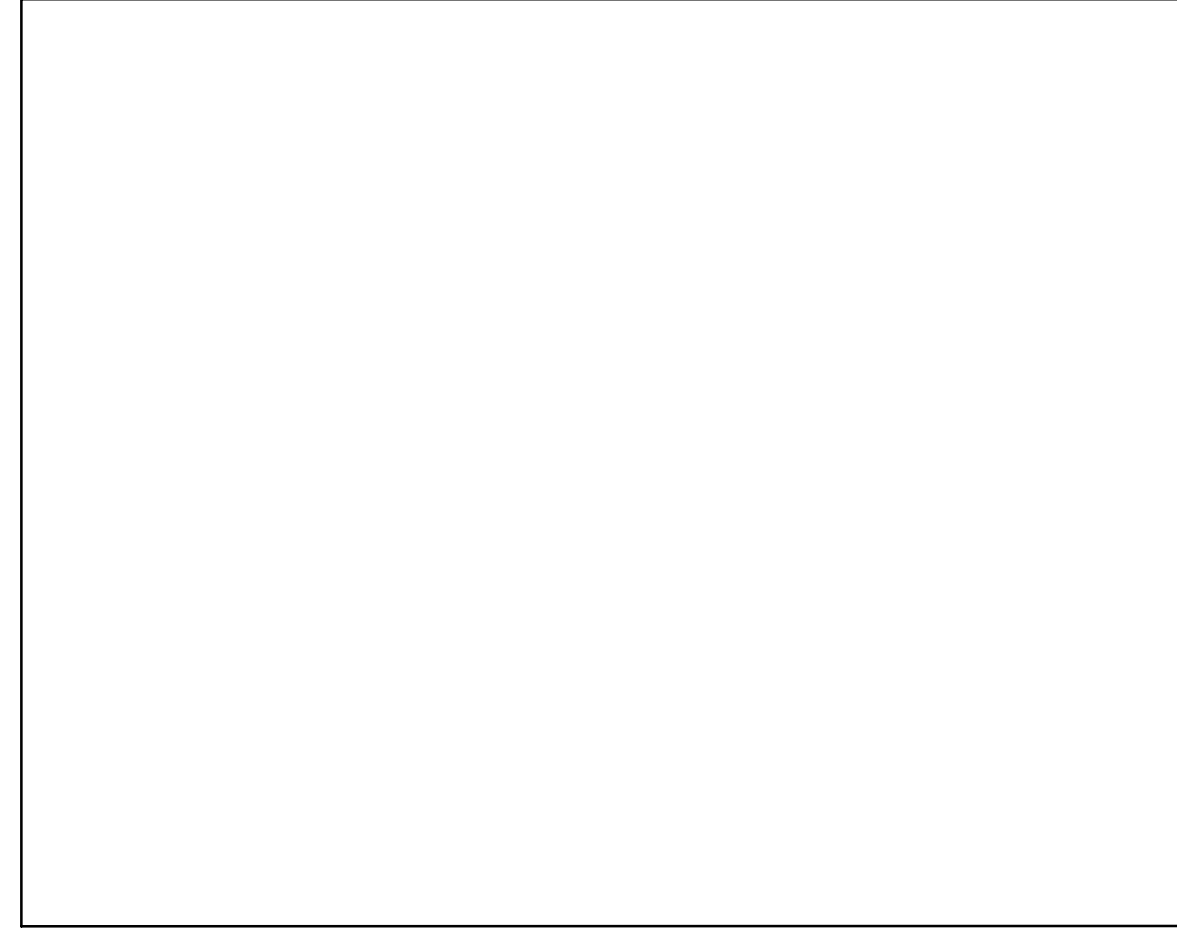
DOOR TYPES NO SCALE



HARDWARE SET



DOOR NOTES



DOOR NOTES

- ALL DOORS SHALL BE ORDERED LONG AND UNDERCUT IN THE FIELD AFTER SLAB DEVIATIONS AND CEILING HEIGHTS ARE VERIFIED AND COORDINATED BY THE GENERAL CONTRACTOR.
- REFER TO PARTITION TYPES FOR DETERMINING DOOR THROAT SIZE WIDTHS.
- NEW INTERIOR DOORS SHALL MATCH TYPE AND FINISH AS THOSE ON THE 2ND FLOOR EXISTING MEMIC SPACES.
- ALL WOOD DOORS SHALL BE MANUFACTURED IN ACCORDANCE WITH ARCHITECTURAL WOODWORK INSTITUTE STANDARDS, PREMIUM GRADE, CONFORMING TO SECTION 1300 ARCHITECTURAL FLUSH DOORS, LATEST EDITION.
- DOOR HARDWARE SHALL MATCH MEMIC EXISTING SPACE ON THE 3RD FLOOR. THE GENERAL CONTRACTOR AND THE DOOR HARDWARE SUPPLIER ARE RESPONSIBLE FOR PROVIDING BUILDING STANDARD CORES THAT TIE INTO THE BUILDING LOCKING/KEYING SYSTEM. COORDINATE KEYING SCHEDULE WITH MEMIC.
- EXPOSED HARDWARE FINISHES SHALL BE US2GD - BRUSHED CHROME.
- ALL GLAZING IN DOORS, SIDELITES, AND PARTITIONS SHALL BE SAFETY TYPE TEMPERED CLEAR GLASS. ALL REQUIRED LABELING SHALL BE CONSISTENTLY LOCATED AT THE BOTTOM RIGHT CORNER OF EACH PANE. THE GENERAL CONTRACTOR SHALL BE RESPONSIBLE FOR COORDINATION.
- DIMENSIONS SHOWN ARE NOMINAL, REFER TO MANUFACTURER FOR ACTUAL SIZES.
- THE OWNER SHALL COORDINATE CARD ACCESS SYSTEM AT ELEVATORS FOR ARRIVALS TO THE FOURTH FLOOR (TENANT-ONLY ACCESS).

DOOR NOTES