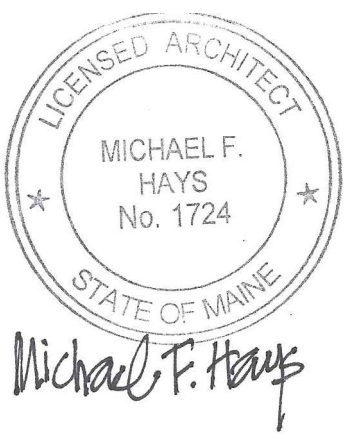


GRANT HAYS
ASSOCIATES

ARCHITECTURE & INTERIOR DESIGN
P.O. BOX 6179 FALMOUTH MAINE 04105
207.871.5900 www.granthays.com



REVISIONS

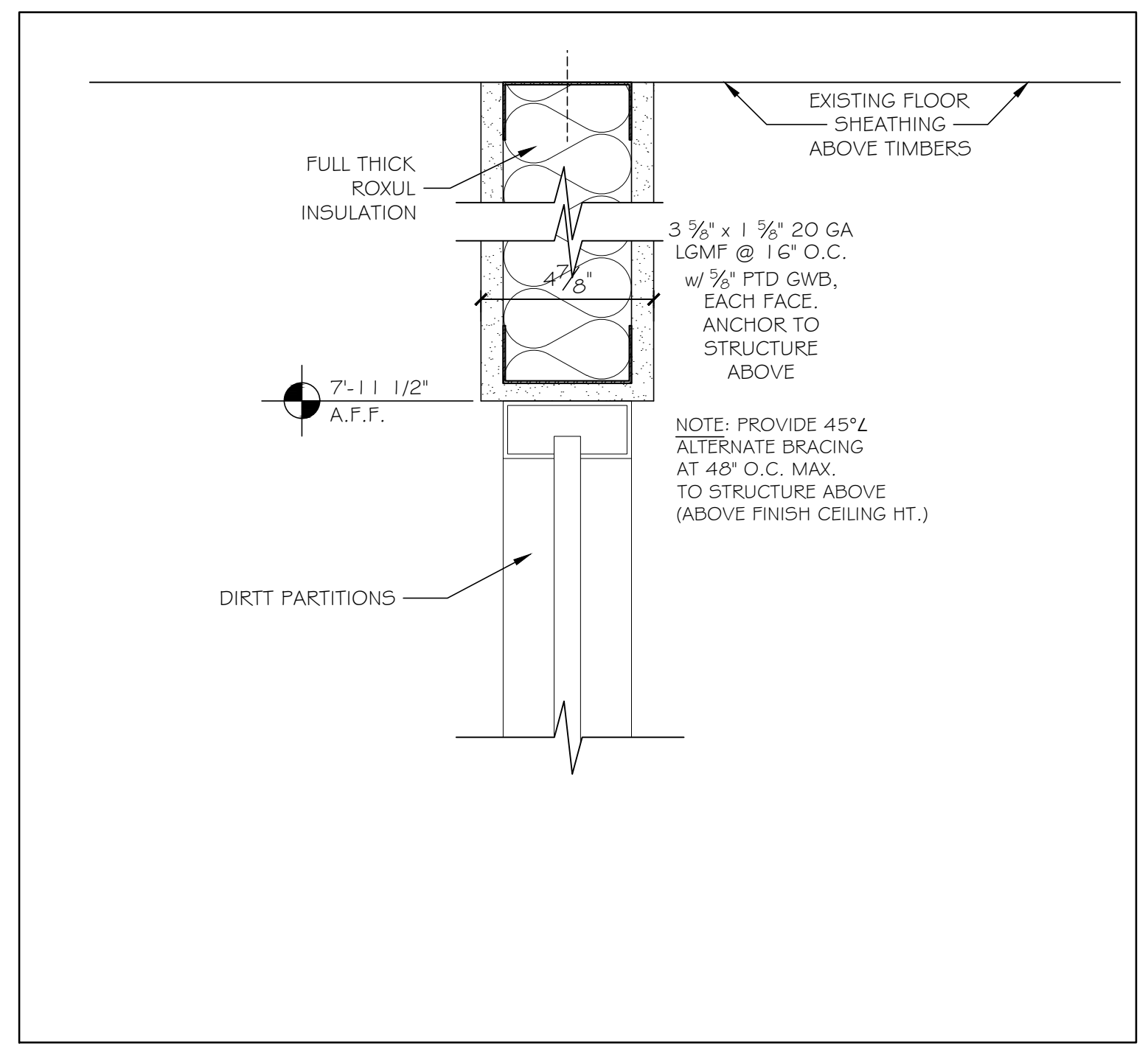
DRAWING NAME
MEMIC
RENOVATION TO THE
SECOND FLOOR OFFICES
245 COMMERCIAL ST. PORTLAND, MAINE 04101

SHEET

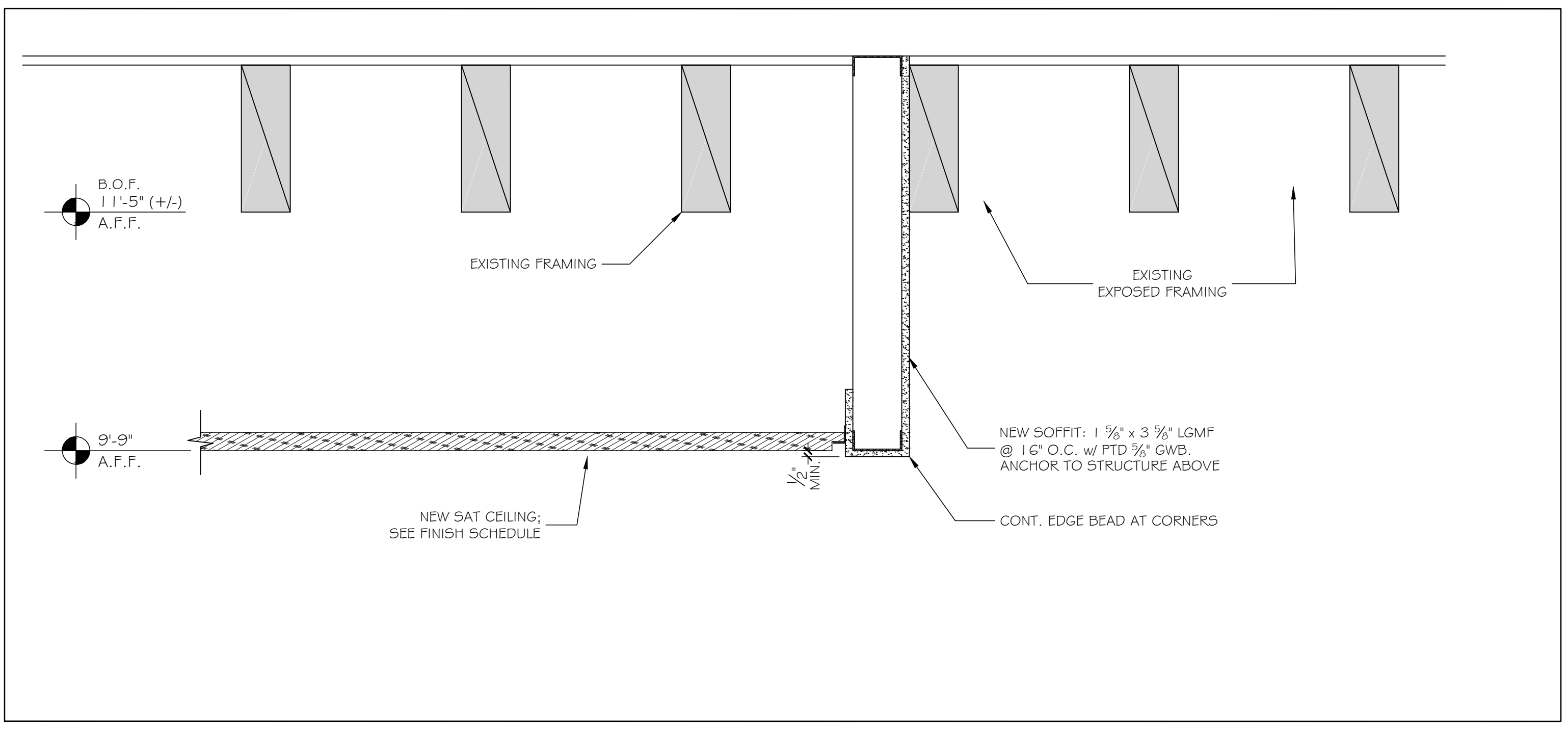
CEILING &
SOFFIT
DETAILS

DATE: 15 SEPT 2017
SCALE: AS NOTED
DRAWN: MFH/mgk
JOB NO. 170831

SHEET
A-6
COPYRIGHT
REPRODUCTION OR REVISE OF THIS
DOCUMENT WITHOUT WRITTEN
PERMISSION FROM GRANT HAYS
ASSOCIATES IS PROHIBITED.



① SOFFIT AT OFFICES AND HUDDLE 3" = 1'-0"



② SOFFIT AT OPEN AREA 1 1/2" = 1'-0"