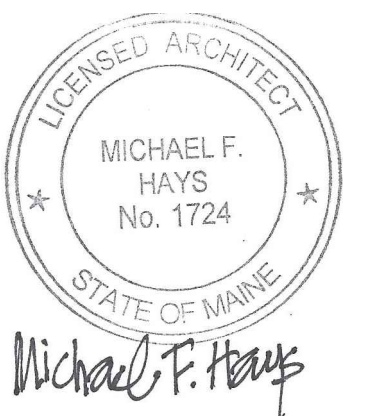


GRANT HAY
ASSOCIATES

ARCHITECTURE & INTERIOR DESIGN
P.O. BOX 6179 FALMOUTH MAINE 04105
207.871.5900 www.granthays.com



REVISIONS

DRAWING NAME

MEMIC RENOVATION TO THE SECOND FLOOR OFFICES
245 COMMERCIAL ST. PORTLAND, MAINE 04101

SHEET

INTERIOR ELEVATIONS

DATE: 15 SEPT 2017

SCALE: 1/4"=1'-0"

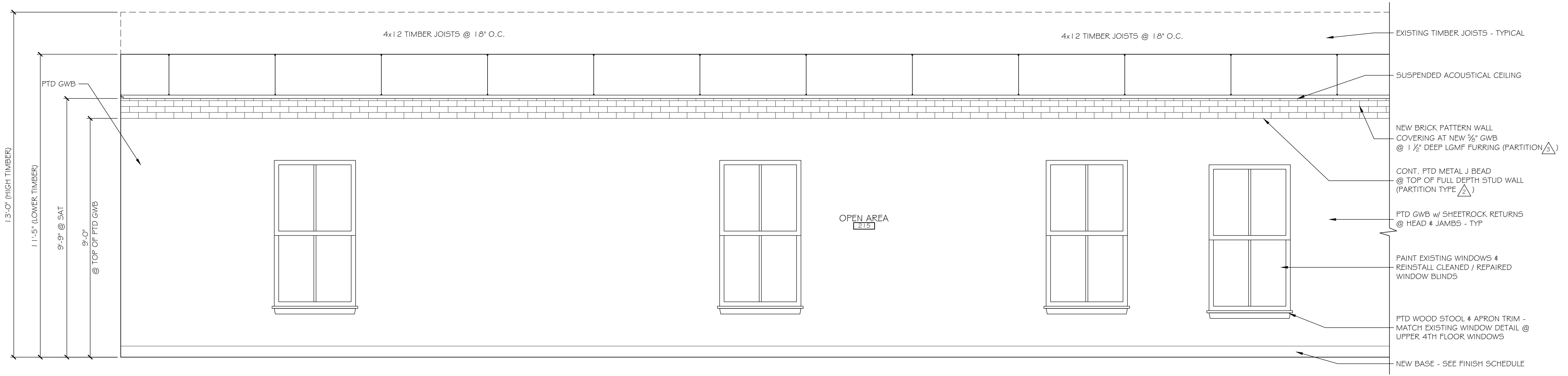
DRAWN: MFH/mgk

JOB NO. 170831

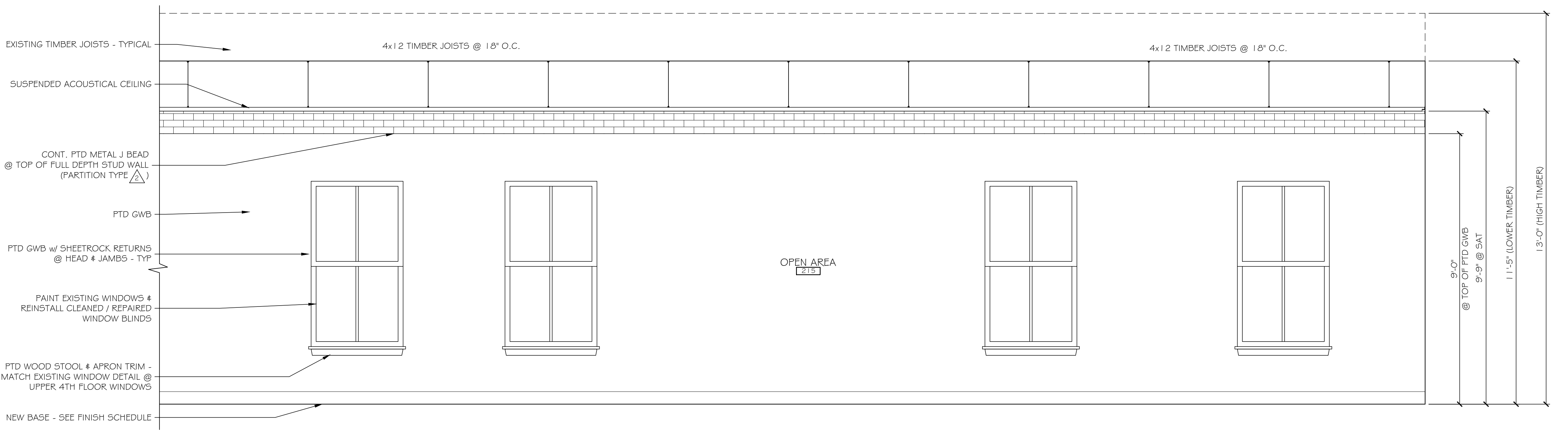
SHEET

A-11

COPYRIGHT REPRODUCTION OR REVISE OF THIS DOCUMENT WITHOUT WRITTEN PERMISSION FROM GRANT HAY ASSOCIATES IS PROHIBITED.



① WEST INTERIOR ELEVATION
SCALE: 1/4" = 1'-0"



② WEST INTERIOR ELEVATION
SCALE: 1/4" = 1'-0"