

GRANT HAYS  
ASSOCIATES

ARCHITECTURE & INTERIOR DESIGN  
P.O. BOX 6179 FALMOUTH MAINE 04105  
207.871.5900 www.granthays.com

SCALE



Michael F. Hays

REVISIONS

DRAWING NAME

MEMIC RENOVATION TO THE SECOND FLOOR OFFICES  
245 COMMERCIAL ST. PORTLAND, MAINE 04101

SHEET

INTERIOR ELEVATIONS

DATE: 15 SEPT 2017

SCALE: 1/4"=1'-0"

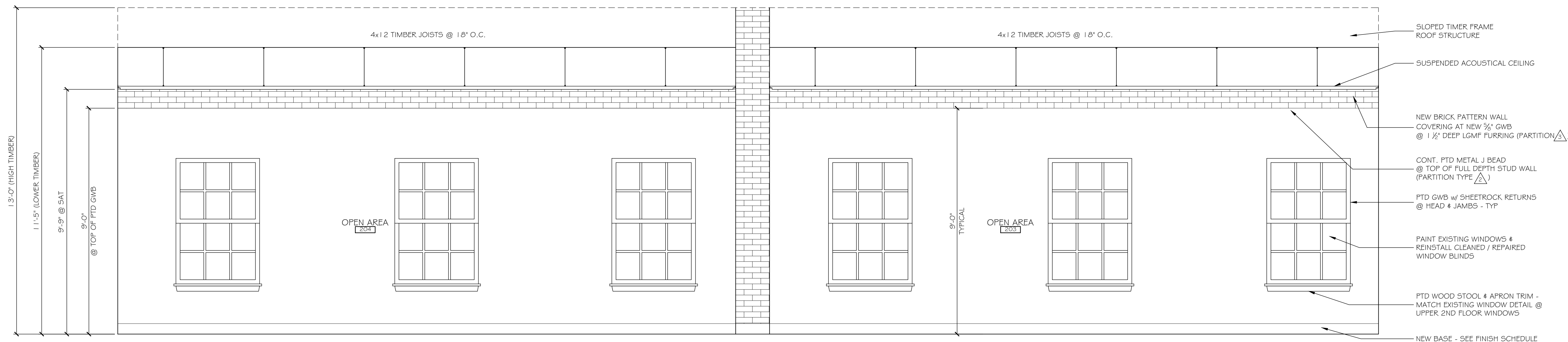
DRAWN: MFH/mgk

JOB NO. 170831

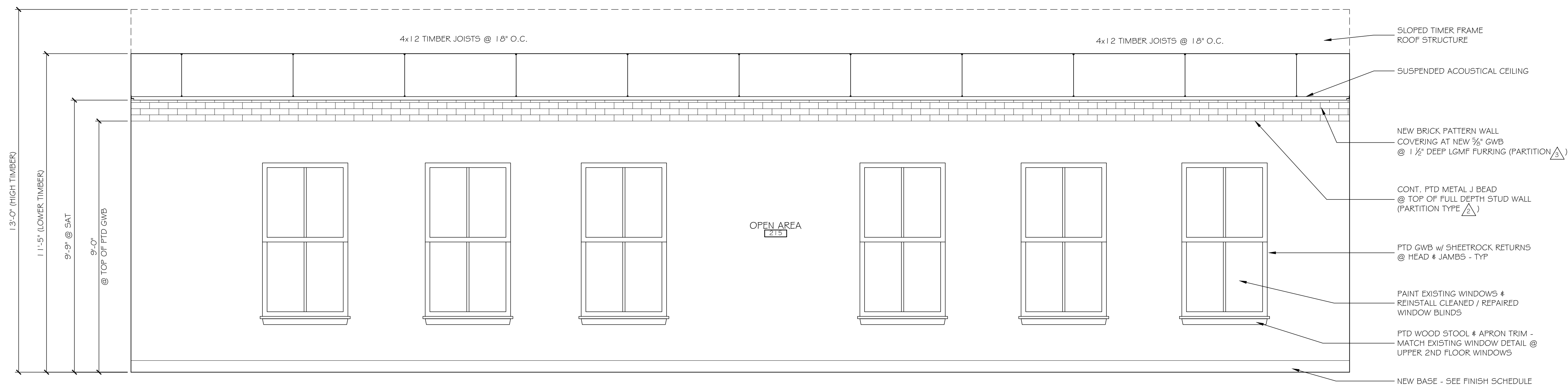
SHEET

A-10

COPYRIGHT REPRODUCTION OR REV. OF THIS DOCUMENT WITHOUT WRITTEN PERMISSION FROM GRANT HAYS ASSOCIATES IS PROHIBITED.



1 COMMERCIAL STREET INTERIOR ELEVATION  
SCALE: 1/4" = 1'-0"



2 COMMERCIAL STREET INTERIOR ELEVATION  
SCALE: 1/4" = 1'-0"