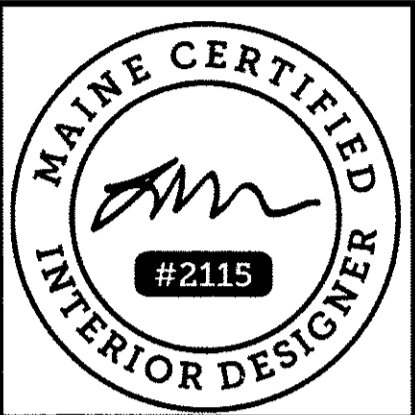


45 HEATHER ROAD
PORTLAND ME



MEMIC
245 COMMERCIAL STREET
FLOOR 2 & FLOOR 3
PORTLAND, ME 04101

REVISION NO.	DATE

TITLE: **TEL-DATA & POWER LOCATION PLAN**

SCALE: 1/8"=1'-0"

DATE: 9.8.2014

DRWN: GB

CHK: LISA WHITED

DRAWING NO. **A-3**

ELECTRIC/TELEPHONE NOTES:

1. THE INTENT OF THIS DRAWING IS TO SHOW LOCATIONS OF ELECTRICAL AND TELEPHONE/ DATA DEVICES ONLY. REFER TO ELECTRICAL ENGINEERING DOCUMENTS FOR WIRING/CIRCUITING OF ALL ELEMENTS. IT IS THE RESPONSIBILITY OF THE G.C. TO MAKE SURE ALL SUBS RECEIVE ALL DRAWINGS ARCHITECTURE AND ENGINEERING FOR PRICING AND COORDINATION.
2. ANY ABANDONED OUTLETS TO BE REMOVED, PATCHED & PAINTED.
3. GENERAL CONTRACTOR SHALL COORDINATE WITH ALL VENDORS INCLUDING, BUT NOT LIMITED TO, TELEPHONE/DATA, MOVERS AND SECURITY CONTRACTORS WHO SHALL BE HIRED DIRECTLY BY THE G.C. OR OWNER.
4. SEE ENGINEERING FOR ALL LOCATIONS OF FIRE RELATED EQUIPMENT SUCH AS PULL STATIONS, FIRE STROBES, ETC. RELOCATE WHERE NECESSARY DUE TO LAYOUT, VCA RESERVES THE RIGHT TO REVIEW AND MOVE PRIOR TO INSTALLATION AT NO ADDITIONAL COST TO THE TENANT.
5. FOR FURTHER INFORMATION ON LIFE SAFETY SYSTEMS, REFER TO THE ELECTRICAL DOCUMENTS.
6. ALL SWITCHING AND RECEPTACLES SHALL BE WHITE WITH WHITE COVER PLATES. SWITCH LOCATIONS NOTED TO REMAIN SHALL BE REPLACED WITH NEW WHITE COVER PLATES TO MATCH NEW CONSTRUCTION.
7. GANG ALL MULTIPLE SWITCHES AT ONE LOCATION, TOGETHER WITH A COMMON FACE PLATE.
8. ALL WALL MOUNTED OUTLETS SHALL BE INSTALLED AT 18" A.F.F. UNLESS NOTED OTHERWISE.
9. ALL WALL MOUNTED OUTLETS SHOWN BACK-TO-BACK ON PLANS SHALL BE INSTALLED OFF-SET TO PREVENT SOUND TRANSMISSION.
10. ALL WALL MOUNTED SWITCHES SHALL BE INSTALLED AT 48" A.F.F. TO MEET ADA/AA, UNLESS NOTED OTHERWISE.
11. G.C. TO COORDINATE W/ RELATED SUB TO PROVIDE FELTED WATER CONNECTION TO REFRIGERATOR W/ ICE MAKER AND COFFEE MACHINE. (U.O.N.)
12. ON FIRE RATED WALLS, ALL RECESSED WALL MOUNTED ELECTRICAL DEVICES AND PENETRATIONS SHOULD NOT REDUCE REQ'D FIRE RATING OF WALL CONSTRUCTION.
13. G.C. TO PROVIDE F.T. BLOCKING OR REQUIRED SUPPORT SYSTEM FOR PLASMA OR LCD, PROJECTOR, PROJECTION SCREEN, CAMERA ETC. REFER TO ENGINEER'S DRAWING AND COORDINATE WITH ELEC. AND AV. VENDOR.
14. G.C. TO COORDINATE WITH FURNITURE, ELEC. A/V VENDOR AND ARCHITECT TO FINALIZE ALL POWER/DATA LOCATIONS.

ELECTRIC/TELEPHONE LEGEND:

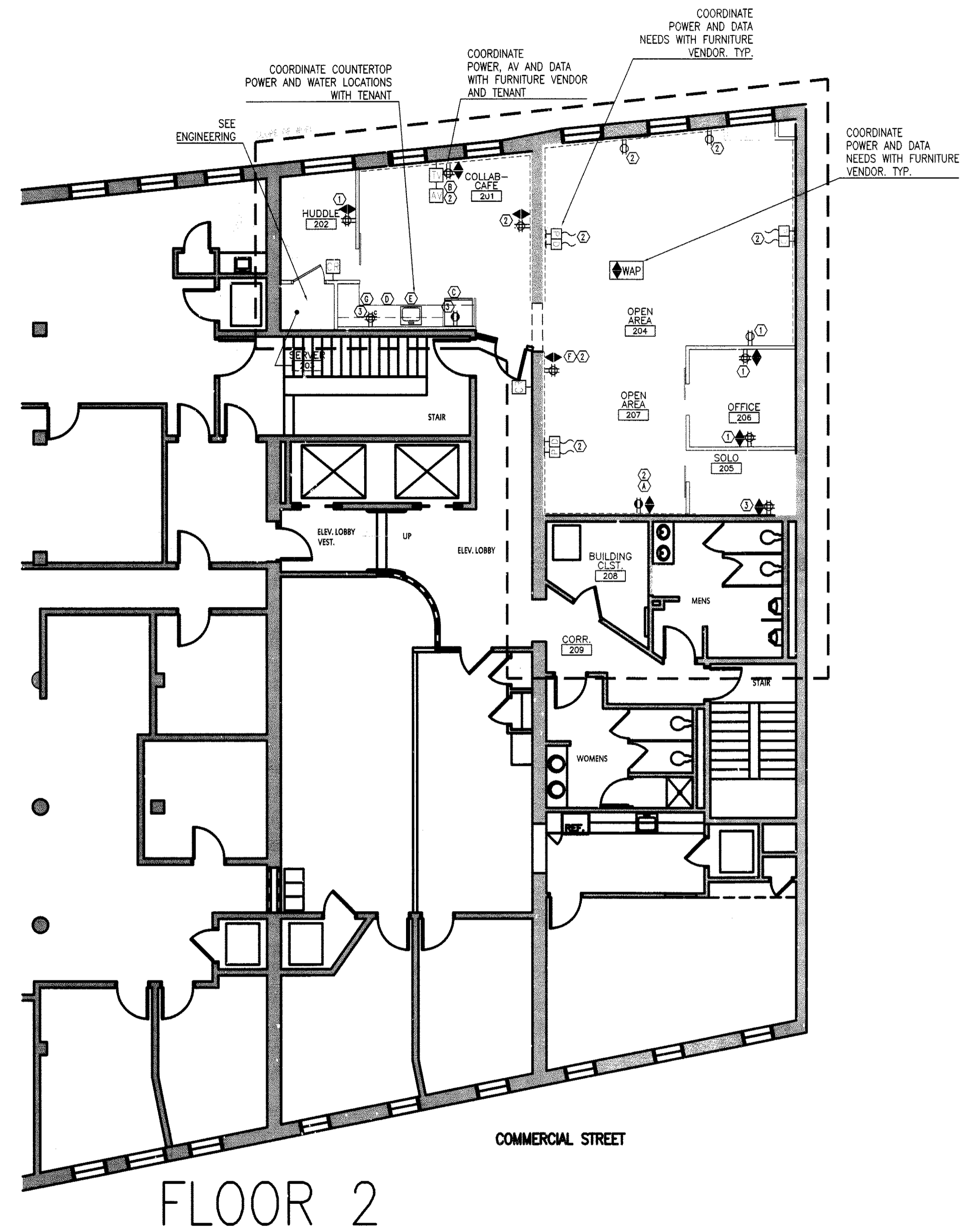
- ⊕ WALL MOUNTED DUPLEX ELECTRICAL OUTLET MOUNTED 18" A.F.F. (U.O.N.)
- ⊕-C WALL MOUNTED DUPLEX ELECTRICAL OUTLET MOUNTED 8" ABOVE COUNTER (U.O.N.)
- ⊕-Q WALL MOUNTED QUADRAPLEX ELECTRICAL OUTLET MOUNTED 18" A.F.F. (U.O.N.)
- ⊕-D WALL MOUNTED DEDICATED CIRCUIT ELECTRICAL OUTLET MOUNTED 18" A.F.F. (U.O.N.)
- ⊕-D WALL MOUNTED DATA LOCATION: G.C. SHALL PROVIDE SINGLE GANG COVER PLATE. OWNER'S VENDOR TO PROVIDE 2 DATA DROPS PER LOCATION. COORDINATE WITH VENDOR.
- ⊕-C WALL MOUNTED DATA LOCATION MOUNTED 8" ABOVE COUNTER (U.O.N.); G.C. SHALL PROVIDE SINGLE GANG COVER PLATE.
- ⊕-P INDICATES WALL MOUNTED FURNITURE INFEED LOCATION OF POWER AND TELECOMMUNICATION CABLING FOR POWERED WORKSTATIONS. SEE PLAN FOR LOCATIONS AND ENGINEERING FOR SPEC'S. THE G.C. SHALL COORDINATE WITH FURNITURE VENDOR FOR ALL REQUIREMENTS.
- ⊕-R WALL MOUNTED CARD READER (42" AFF). SECURITY VENDOR
- ⊕-W PROVIDE WIRING FOR CABLE TV
- ⊕-S INDICATES SURFACE MOUNTED RACEWAY (COORDINATE MOUNTING HEIGHT IN-FIELD) SEE ENGINEER'S DWGS FOR MORE INFORMATION.
- ⊕-WAP WIRELESS ACCESS POINT, GC TO PROVIDE DATA LOCATION

EQUIPMENT LIST:

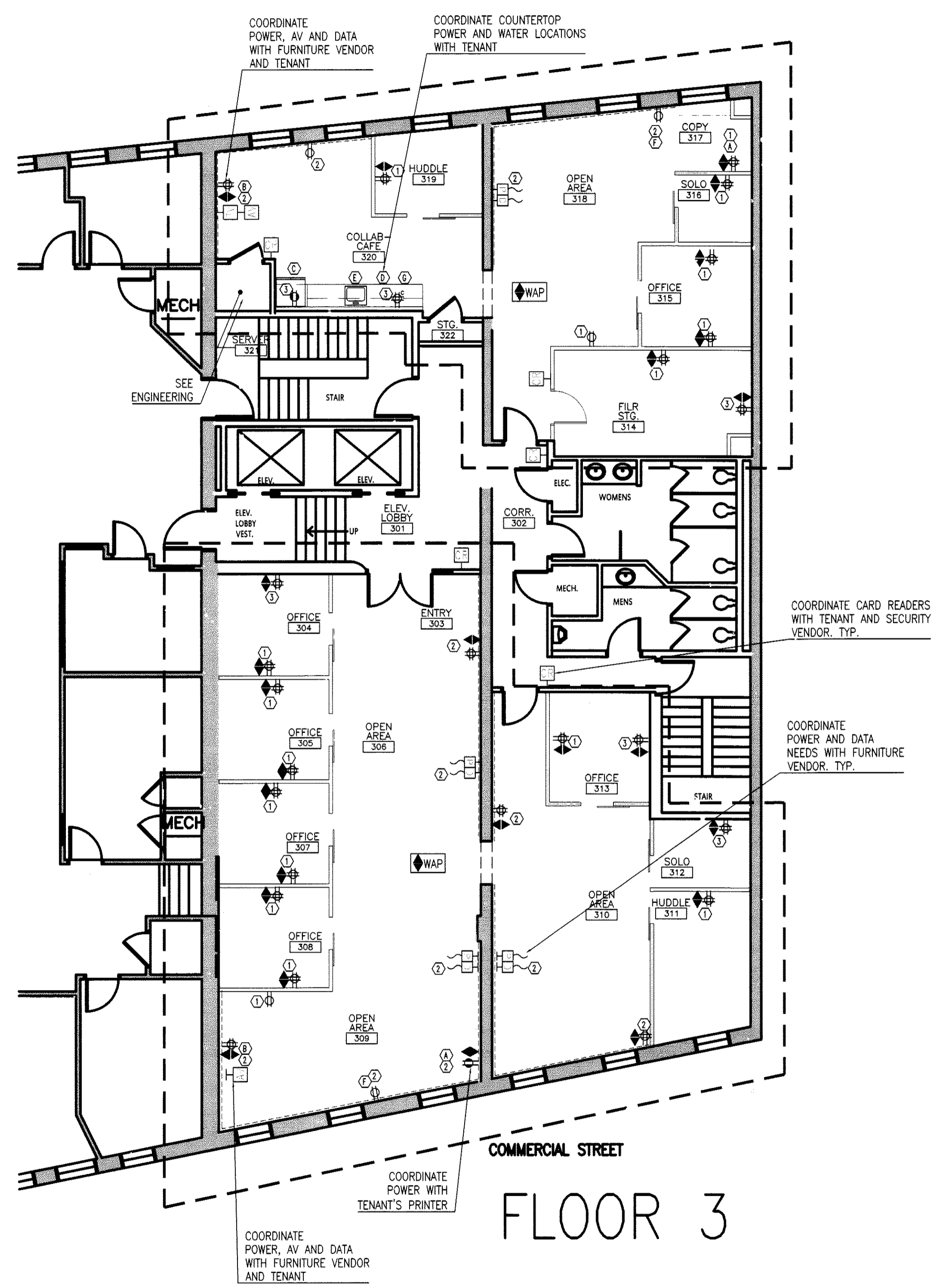
- (A) COPY MACHINE OR PRINTER (N.I.C.) - PROVIDE POWER/DATA
- (B) FLAT SCREEN TV (N.I.C.) - G.C. TO PROVIDE IN-WALL FIRE-RATED BLOCKING & POWER/DATA
- (C) REFRIGERATOR-DEDICATED POWER. G.C. TO COORDINATE DOOR SWING CLEARANCES AND DIMENSIONS WITH MILLWORK. PROVIDE FILTERED WATER LINE TO WATER/ICE. KitchenAid Model # KSF22C4CYY Architect Series II 22.0 cu. ft. Side-by-Side Refrigerator in Stainless Steel
- (D) COUNTERTOP MICROWAVE, GC TO COORDINATE POWER AND SIZE REQUIREMENTS WITH MILLWORK
KitchenAid Model # KQMS1655BSS Architect Series II 1.6 cu. ft. Countertop Microwave in Stainless Steel Built-In Capable with Sensor Cooking
- (E) UNDER MOUNT ADA SINGLE BOWL SINK AND FAUCET SEE ENGINEER'S DRAWINGS FOR MORE SPECIFICATIONS (PROVIDE WITH ALL NECESSARY ACCESSORIES). Elkay Gourmet (Lustertone) Stainless Steel Single Bowl Undermount Sink ELUHAD211545
Elkay Allure Kitchen Faucet LK7921SS
- (F) POWER FOR SHREDDER MACHINE. (n.i.c.)
- (G) POWER AND WATER LINE FOR COFFEE MAKER
G.C. COORDINATE WITH WATER FILTRATION VENDOR ON INSTALL

PLAN NOTATION:

- ① INDICATES POWER AND DATA RUN THROUGH A FURNITURE WALL. GC TO COORDINATE WITH FURNITURE VENDOR FOR REQUIREMENTS
- ② INDICATES POWER AND DATA TO BE RUN THROUGH SURFACE MOUNTED WIREMOLD. PRODUCT TO BE SPECIFIED BY TENANT. ATTACH TO EXPOSED BRICK WALL AS NECESSARY.
- ③ INDICATES POWER AND DATA TO BE RUN THROUGH EXISTING CONSTRUCTION WALL.



FLOOR 2



FLOOR 3