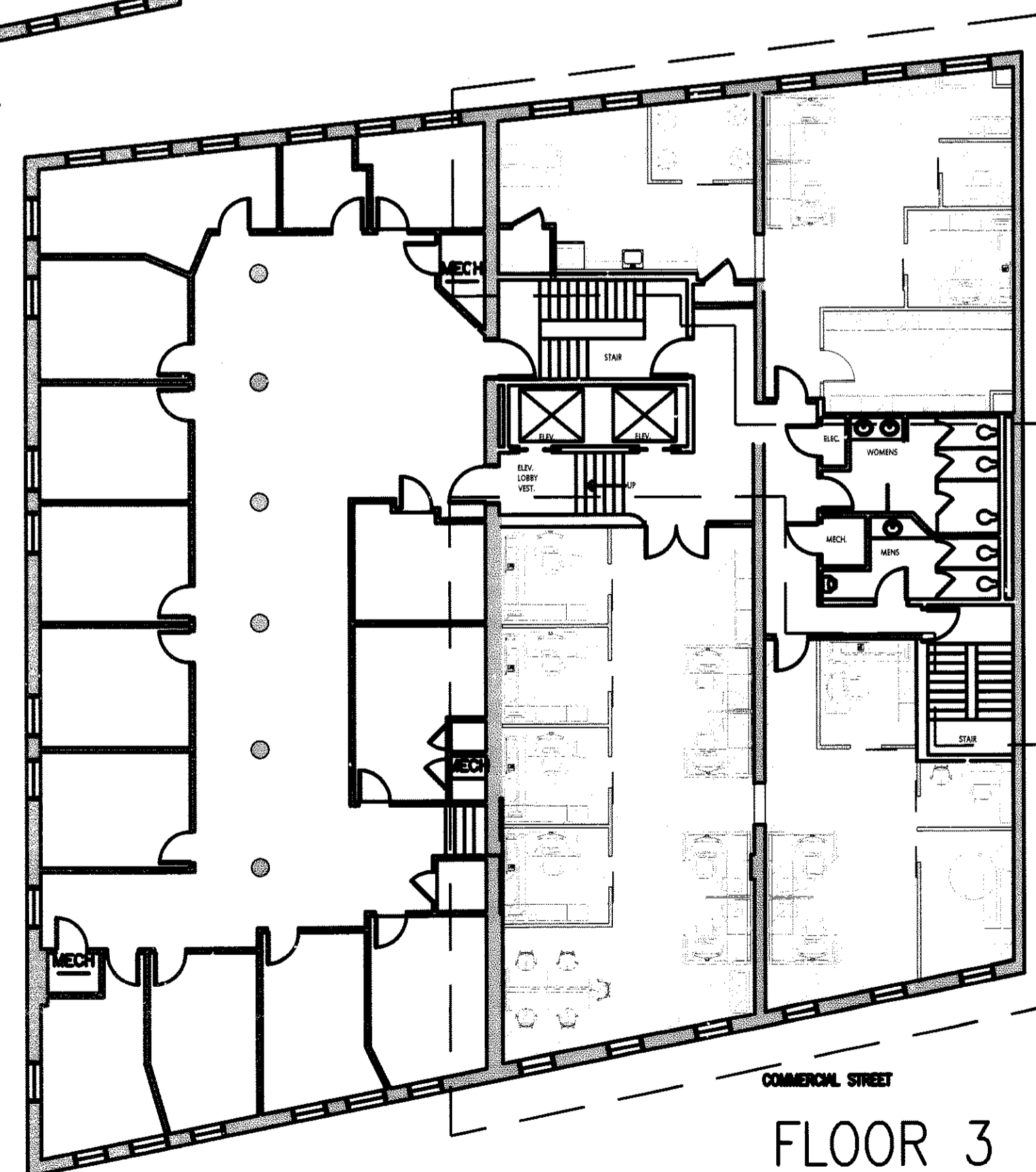
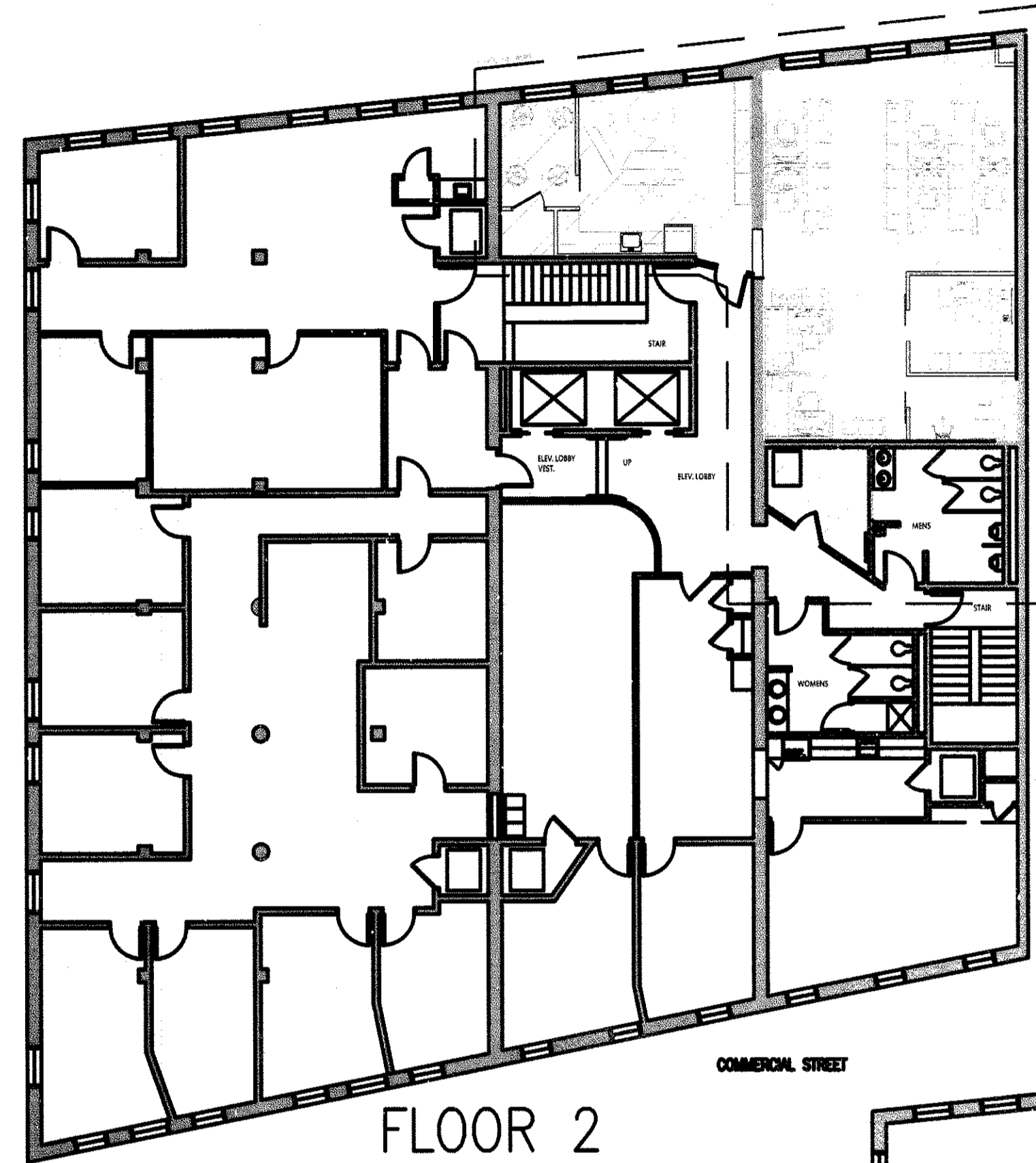


MEMIC

PERMIT SET 9-8-14

245 COMMERCIAL ST. FL2 & FL3 PORTLAND, ME 04101



KEY PLAN

NOT TO SCALE



DRAWING INDEX

ARCHITECTURAL

- A-0 COVER SHEET
- D-1 DEMOLITION PLAN
- A-1 FURNITURE PLAN
- A-2 CONSTRUCTION PLAN
- A-3 ELEC. POWER AND TEL/DATA
- A-4 REFLECTED CEILING PLAN
- A-5 FINISH PLAN
- A-6.1 ELEVATIONS
- A-6.2 ELEVATIONS
- A-7 DOOR SCHEDULE
- A-8 DETAILS

DRAWING INDEX

ENGINEERING

- M-1 2nd FLOOR MECH PLAN
- M-2 3rd FLOOR MECH PLAN
- M-3 2nd FLOOR PIPING PLAN
- M-4 3rd FLOOR PIPING PLAN
- M-5 2nd FLOOR PLUMBING PLAN
- M-6 3rd FLOOR PLUMBING PLAN

- E-1 ELECTRICAL PLANS
- E-2 LIGHTING PLANS
- E-3 ELECTRICAL CONNECTIONS
MECHANICAL EQUIPMENT

DRAWING INDEX

CODE COMPLIANCE

- AC-1 SECOND FLOOR
CODE COMPLIANCE PLAN
- AC-2 THIRD FLOOR
CODE COMPLIANCE PLAN
- AC-3 CODE ANALYSIS & DETAILS

OWNER

Casco View Holdings
261 Commercial St.
Portland, ME

ARCHITECT:

Grant Hays Associates
P.O. Box 6179
Falmouth, ME 04105

INTERIOR DESIGNER:

Whited Planning + Design
45 Heather Rd.
Portland, ME 04103

M/P ENGINEER

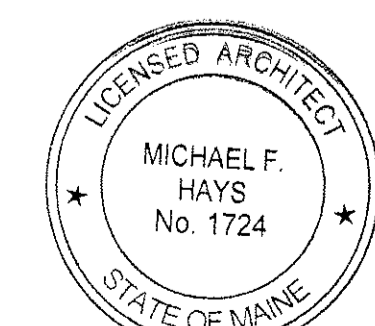
Bennett Engineering Inc.
P.O. Box 297
Freeport, ME 04032

LIGHTING/ELEC. ENGINEER

Bartlett Design
942 Washington St,
Bath, ME 04530

GENERAL CONTRACTOR

Zachau Construction
1185 U.S. Route One
P.O. Box J
Freeport, ME 04032



Michael F. Hays