

**CODE REVIEW**

MUBEC - MAINE UNIFORM BUILDING AND ENERGY CODE  
 2009 INTERNATIONAL BUILDING CODE, 2009 INTERNATIONAL ENERGY CONSERVATION CODE  
 2009 NFPA 101 LIFE SAFETY CODE, NFPA 5000  
 2009 AMERICANS WITH DISABILITY ACT  
 CITY OF PORTLAND, MAINE ORDINANCES

BUILDING IS CURRENTLY APPROVED AS A MULT-TENANT/ MULTI FLOOR COMPLEX

TENANT SUITE IS ON THE 2ND FLOOR.

USE AND OCCUPANCY CLASSIFICATION  
 USE GROUP B - BUSINESS

TYPE OF CONSTRUCTION  
 CONSTRUCTION TYPE II-B OR III-B  
 NFPA APPROVED SPRINKLER SYSTEM WIRED TO CITY ALARM SYSTEM  
 FIRE PROTECTION - SMOKE ALARM SYSTEM  
 EXIT ACCESS - FRONT TO COMMON CORRIDOR  
 SIDE DOOR TO STAIRWAY

FIRE RATINGS OF ASSEMBLIES  
 EXTERIOR WALLS - 0 HR.  
 INTERIOR WALLS - 0 HR.  
 TENANT SEPARATION WALLS - 0 HR.  
 FLOOR - 1 HR.  
 ROOF - 0 HR.

MINIMUM NUMBER OF EXITS 2

COMMON PATH = 100 FT  
 TRAVEL DISTANCE = 300 FT  
 DEAD END CORRIDOR = 50 FT

**FIRE SAFETY LEGEND**

- SMOKE/HEAT DETECTOR
- PULL STATION
- FIRE EXTINGUISHER
- EMERGENCY LIGHT
- HORN STROBE PACK
- FIRE ALARM BELL
- ILLUMINATED EXIT SIGN

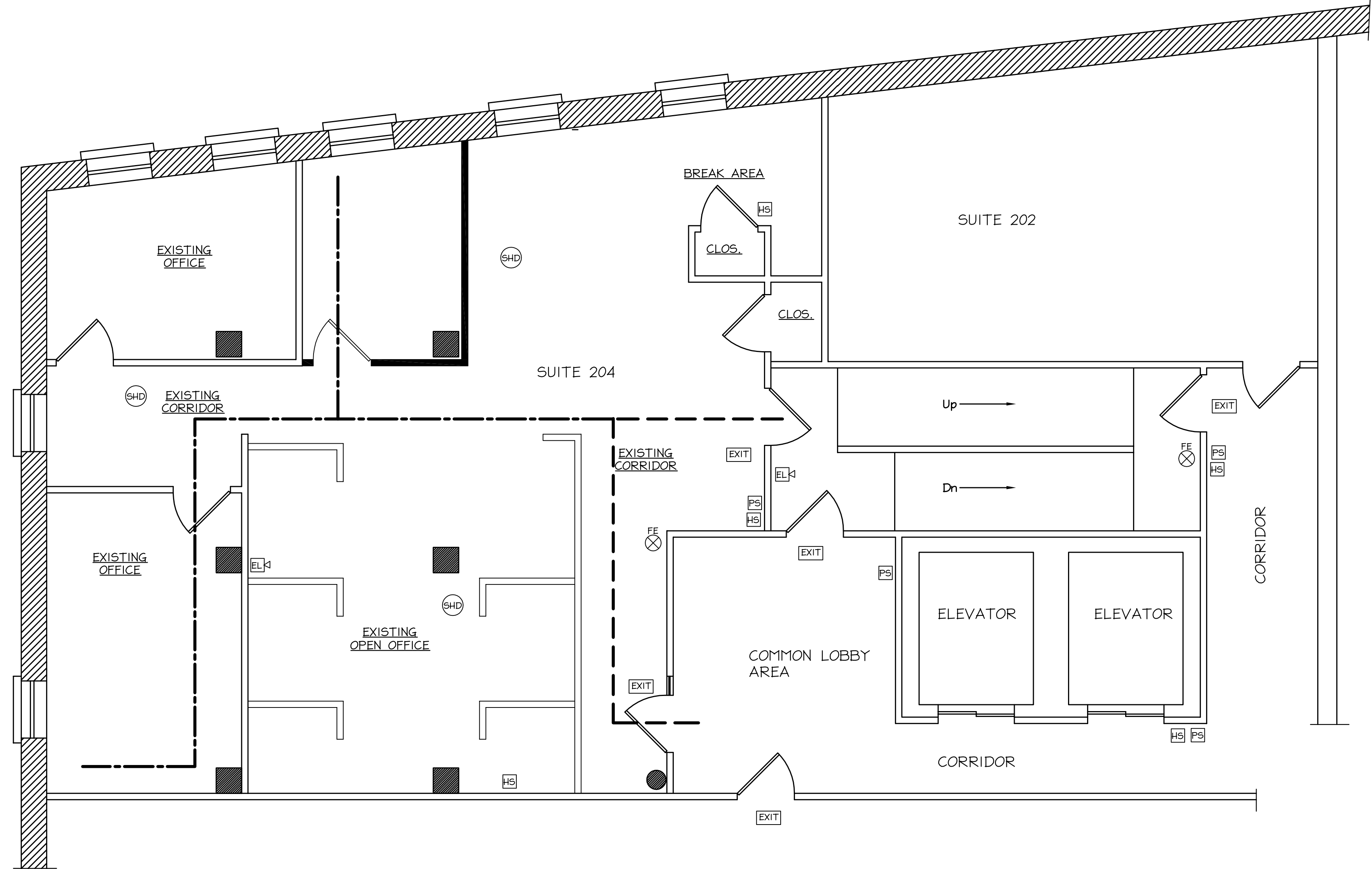
**FIRE SAFETY NOTES:**

1. EMERGENCY LIGHTS, HORN STROBES 80" AFF AS PER PLAN CONNECT TO BUILDING ALARM SYSTEM
2. PROVIDE/RELOCATE SMOKE ALARM DETECTORS AS PER PLAN, CONNECT TO BUILDING ALARM SYSTEM
3. FIRE EXTINGUISHER PER PLAN
4. REVISE SPRINKLER HEAD LOCATIONS TO ACCOMMODATE FLOOR PLAN IN THE RENOVATED AREA.
5. ALL INTERIOR FLOOR, WALL, AND CEILING EXPOSED SURFACE FINISHES, BUILDING CONTENTS AND FURNISHINGS SHALL MEET THE REQUIREMENTS OF CH. 10NFPA LIFE SAFETY CODE 2009, CLASS A OR B, ASM E84 TABLES A.10.2 AND A10.2.2 (RENOVATED AREAS ONLY)

**ACCESSIBILITY NOTES:**

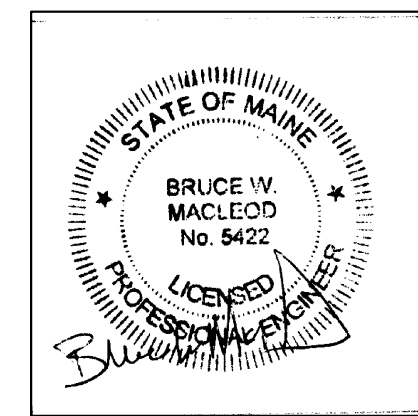
1. RENOVATED PORTIONS OF THIS SUITE ARE GOVERNED BY FEDERAL AND STATE ACCESSIBILITY RULES SET FORTH IN 28 CFR PART 36 SECTIONS
2. ELECTRICAL OUTLETS AT 15" AFF / SWITCHES AT 34" AFF
3. PROVIDE MIN. CLEARANCE ON HANDLE SIDE OF ALL DOORS, 12" INSWING, 18" OUTSWING
4. DOORS TO BE EQUIPPED WITH ADA HARDWARE AS PER SCHEDULE AND CH. 4.13, LOCKING DEVICES SHALL NOT REQUIRE KEYS / TOOLS / SPECIAL KNOWLEDGE TO OPEN FROM THE EGRESS SIDE.
5. ALL EXISTING AREAS OUTSIDE LIMIT OF CONSTRUCTION ARE GRANDFATHERED
6. THIS SUITE IS LOCATED WITHIN A MULTI TENANT COMPLEX. ALL STANDARDS AND SITE REQUIREMENTS ARE THE RESPONSIBILITY OF THE PROPERTY OWNER.

**LEGEND:**  
 COMMON PATH OF TRAVEL   
 TRAVEL DISTANCE



**ABBREVIATIONS**  
 ETR = Existing To Remain  
 FOW = Face of Wall

**LIFE SAFETY PLAN**  
 SCALE: 1/4" = 1'-0"



MACLEOD STRUCTURAL ENGINEERS, P.A. 80 Bridge Street Suite 252 Westbrook, Maine 04092 207.639.0980		
TILSON CO. OFFICE RENOVATIONS NATHAN WINSLOW BLOCK 245 COMMERCIAL STREET SUITE 203/204 PORTLAND, MAINE 04101		
TITLE: LIFE SAFETY & ACCESSIBILITY PLAN & NOTES		
DATE: 10.30.13	DRAWN BY: BIM	DRAWING NUMBER:
SCALE: as noted	PROJ NO: 2013-240	LS-1