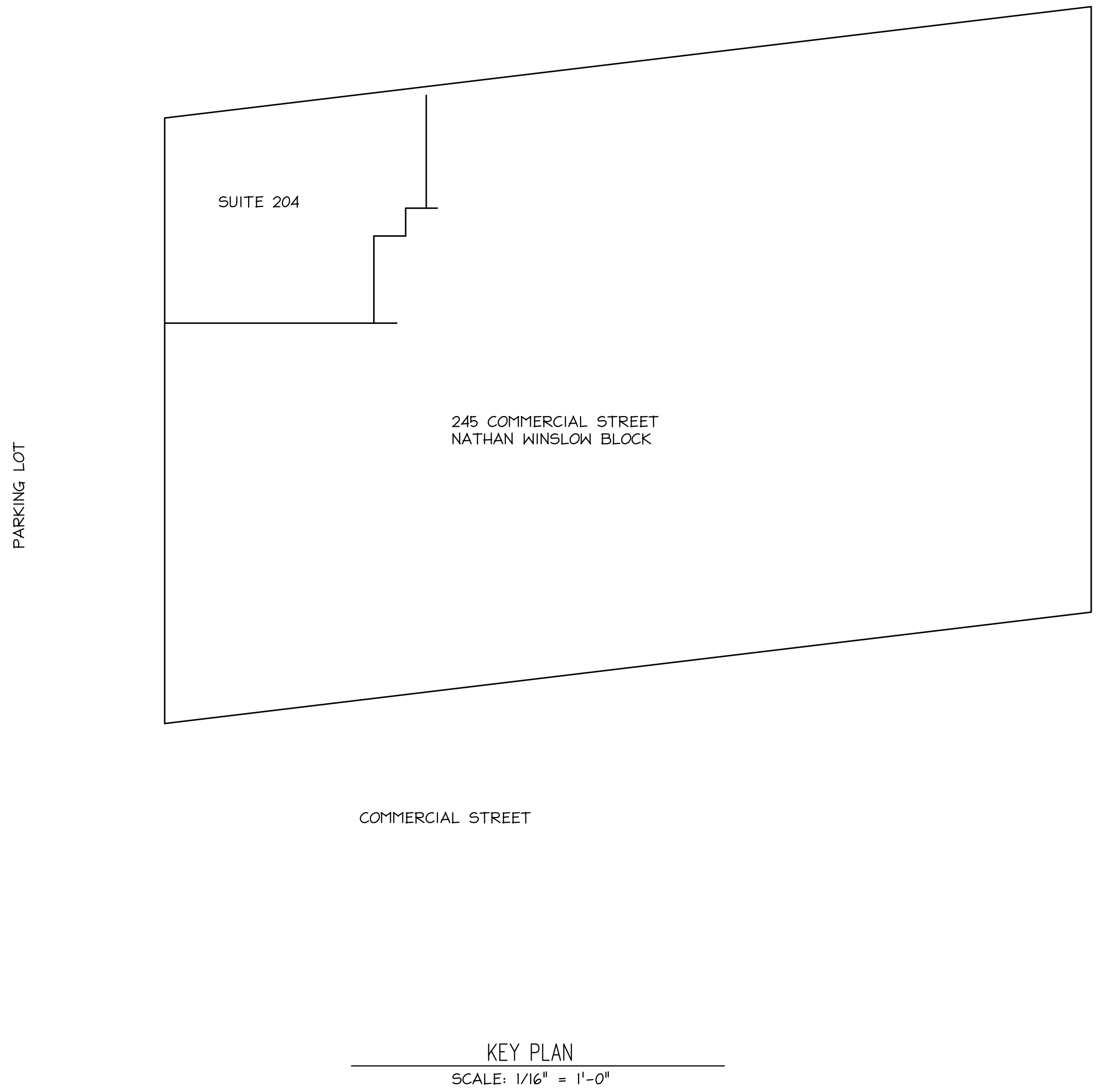
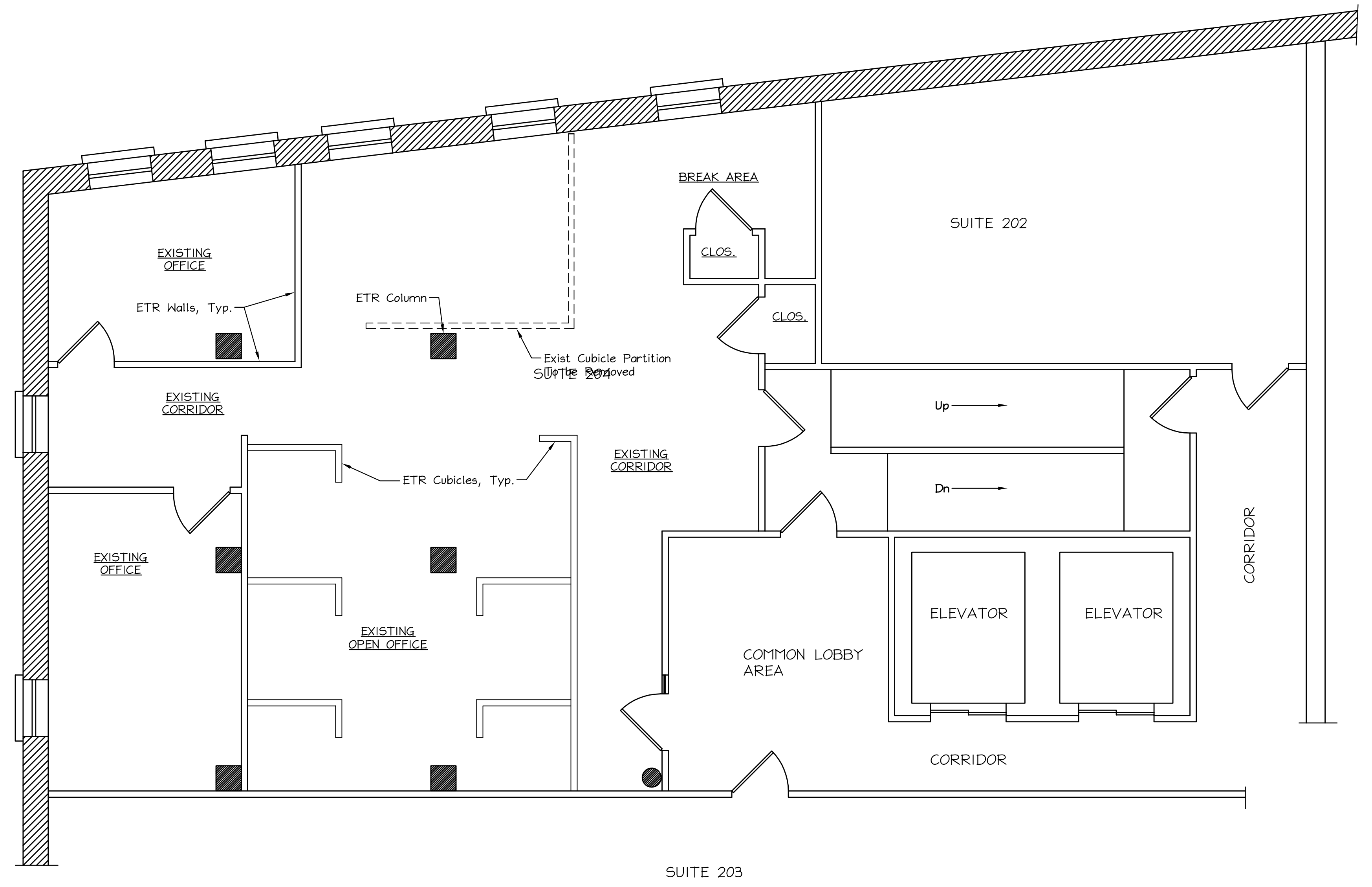




PROJECT NORTH



KEY PLAN  
SCALE: 1/16" = 1'-0"



ABBREVIATIONS  
ETR = Existing To Remain  
FOW = Face of Wall

EXISTING CONDITIONS/DEMOLITION PLAN  
SCALE: 1/4" = 1'-0"

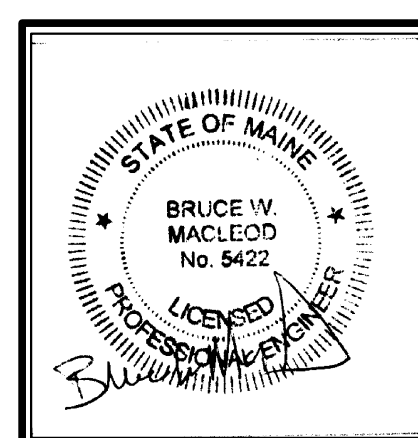
DRAWING LIST:

E-1	EXISTING/DEMOLITION PLAN
A-1	FLOOR PLAN
LS-1	LIFE SAFETY/ACCESSIBILITY PLAN

These drawings are the property of MacLeod Structural Engineers, PA and are for the exclusive use of:  
**GREAT FALLS CONSTRUCTION**  
Use of these drawings by others without written consent is prohibited.

**MACLEOD**  
STRUCTURAL ENGINEERS, PA  
80 Bridge Street Suite 202  
Westbrook, Maine 04092 207.639.0980

**TILSON CO. OFFICE RENOVATIONS**  
NATHAN WINSLOW BLOCK  
245 COMMERCIAL STREET SUITE 203/204  
PORTLAND, MAINE 04101



△ \_\_\_\_\_  
△ \_\_\_\_\_  
△ \_\_\_\_\_

TITLE:  
**EXISTING CONDITIONS/DEMO PLAN**

DATE: 10.30.13	DRAWN BY: BIM	DRAWING NUMBER:
SCALE: as noted	PROJ NO: 2013-240	E-1