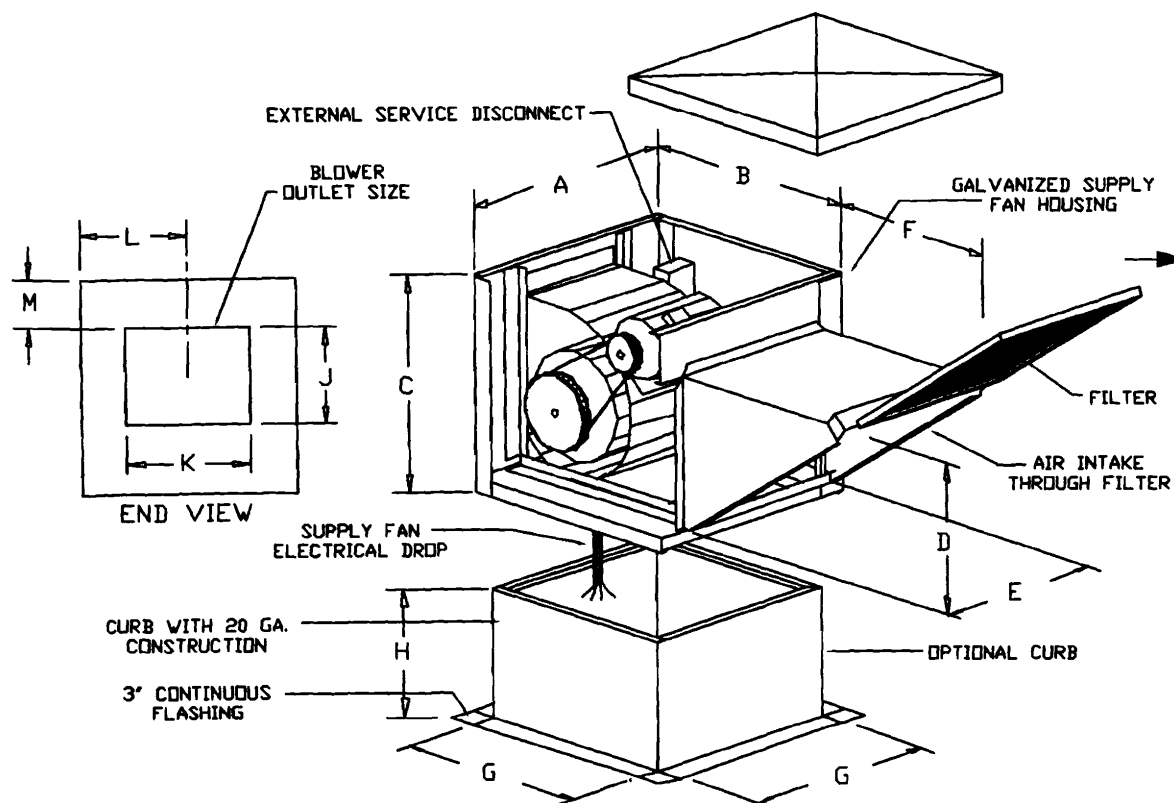


NSAU-1 AND NSAU-2 SERIES SIDE DISCHARGE SUPPLY FANS



SUPPLY AIR UNIT DIMENSIONAL DATA

MODEL	BLOWER	HP RANGE	A	B	C	D	E	F	FILTER QTY.	FILTER SIZE	WEIGHT
NSAU-1	G-10	.33 - 2	26	32	28	20	20	26	2	16" X 20"	175 LBS
NSAU-2	G-12	.33 - 3	36	40	35	28.5	25	29	2	20" X 25"	275 LBS
	G-15	.75 - 5						53.75	3	20" X 25"	315 LBS



CURB/BLOWER DIMENSIONAL DATA

MODEL	BLOWER	G	H	J	K	L	M
NSAU-1	G-10	23	14	11-3/4	13-1/2	13	6-1/4
NSAU-2	G-12	32.5	14	13-3/4	15-7/8	18	10
	G-15			16-1/8	18-7/8	18	6-1/2

CAPTIVE-AIRE SYSTEMS, INC. RESERVES THE RIGHT TO MODIFY THE DESIGN, MATERIALS AND/OR SPECIFICATIONS AS A RESULT OF CUSTOMER REQUIREMENTS OR PRODUCT ENHANCEMENTS RESULTING FROM RESEARCH AND DEVELOPMENT.

CUSTOMER APPROVAL TO MANUFACTURE:

Approved as Noted
 Approved with NO Exception Taken
 Revise and Resubmit
 SIGNATURE [Signature]
 Your Title _____ Date _____

CAPTIVE-AIRE

JOB Portland Job

LOCATION

DATE 3/9/2009

JOB # 917212

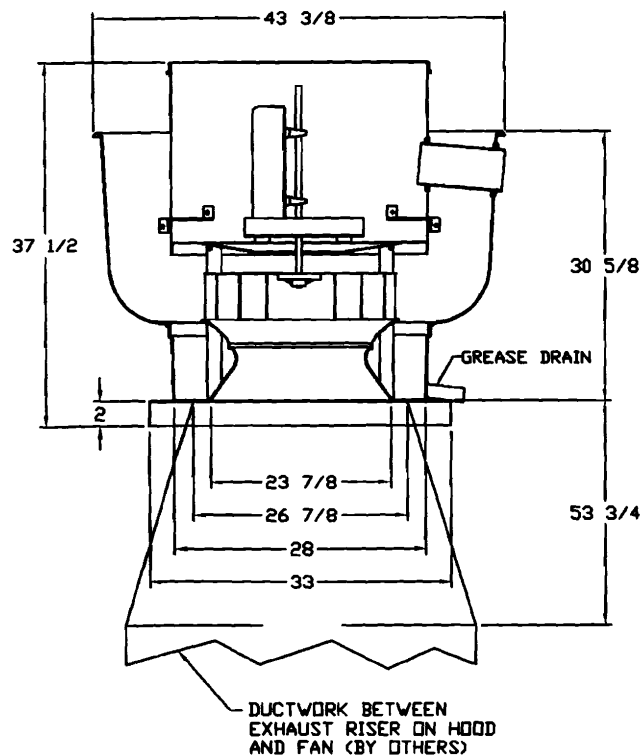
DWG # PortlandJob

DRAWN BY BFC

REV. 1.00

SCALE 8.5' x 11'

FAN #1 NCA24HPFA - EXHAUST FAN



FEATURES:

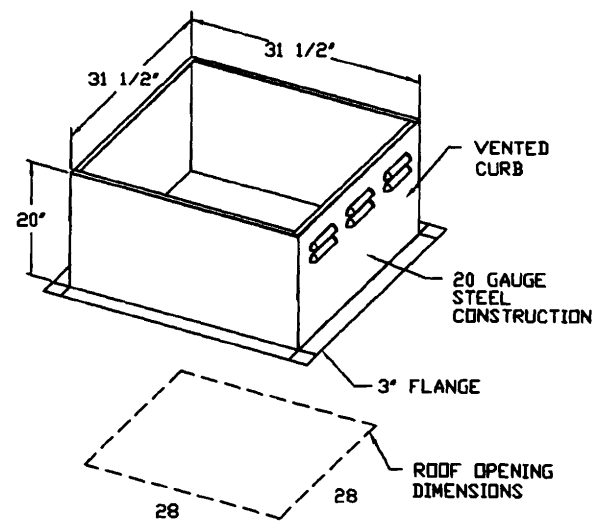
- ROOF MOUNTED FANS
- RESTAURANT MODEL
- UL762
- AMCA SOUND AND AIR CERTIFIED
- WIRING FROM MOTOR TO DISCONNECT SWITCH
- WEATHERPROOF DISCONNECT
- HIGH HEAT OPERATION 300°F (149°C)
- GREASE CLASSIFICATION TESTING

NORMAL TEMPERATURE TEST
EXHAUST FAN MUST OPERATE CONTINUOUSLY WHILE EXHAUSTING AIR AT 300°F (149°C) UNTIL ALL FAN PARTS HAVE REACHED THERMAL EQUILIBRIUM, AND WITHOUT ANY DETERIORATING EFFECTS TO THE FAN WHICH WOULD CAUSE UNSAFE OPERATION.

ABNORMAL FLARE-UP TEST
EXHAUST FAN MUST OPERATE CONTINUOUSLY WHILE EXHAUSTING BURNING GREASE VAPORS AT 600°F (316°C) FOR A PERIOD OF 15 MINUTES WITHOUT THE FAN BECOMING DAMAGED TO ANY EXTENT THAT COULD CAUSE AN UNSAFE CONDITION.

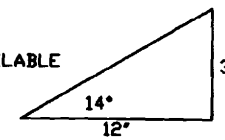
OPTIONS

- GREASE BOX
- FAN BASE CERAMIC SEAL - FOR GREASE DUCTS



PITCHED CURBS ARE AVAILABLE FOR PITCHED ROOFS.

SPECIFY PITCH:
EXAMPLE: 7/12 PITCH = 30° SLOPE



CUSTOMER APPROVAL TO MANUFACTURE:

Approved as Noted

Approved with NO Exception Taken

Revise and Resubmit

SIGNATURE 

Your Title _____ Date _____

CAPTIVE AIR

JOB Portland Job

LOCATION

DATE 3/9/2009

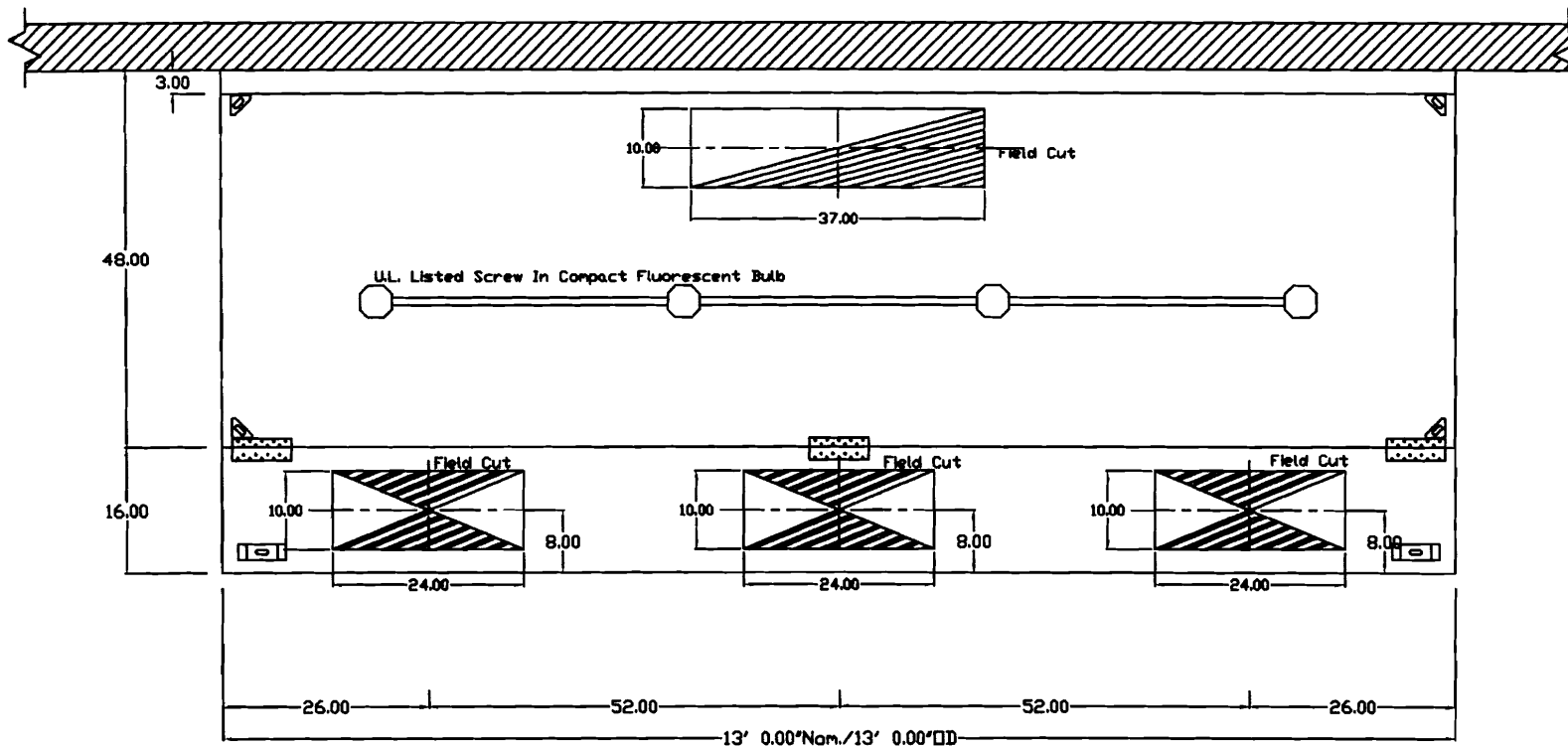
JOB # 917212

DWG # PortlandJob

DRAWN BY BFC

REV. 1.00

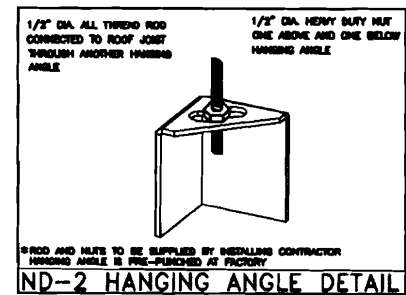
SCALE 8.5' x 11'



PLAN VIEW - Hood #1

13' 0.00" LONG 4812SND-2-PSP-F

NOTE: Additional hanging angles provided for hoods longer than 12 ft.



CUSTOMER APPROVAL TO MANUFACTURE:

Approved as Noted

Approved with NO Exception Taken

Revise and Resubmit

SIGNATURE [Signature]

Your Title _____ Date _____

CAPTIVEAIR

JOB Portland Job

LOCATION

DATE 3/9/2009

JOB # 917212

DWG # PortlandJob

DRAWN BY BFC

REV. 1.00

SCALE 8.5' x 11'

THE HOOD MAY BE INSTALLED WITH A 0 INCH CLEARANCE TO COMBUSTIBLE MATERIALS IF CONSTRUCTED IN ONE OF THE FOLLOWING METHODS:

- 3" UNINSULATED STANDOFF
- 1" INSULATED STANDOFF
- 1" INSULATED BACKSPLASH
- BACK RETURN SUPPLY PLENUM

TABLE 1

ETL LISTING DESCRIPTION

THE CAPTIVE AIRE MODEL

ND-2 HAS BEEN E.T.L.

TESTED, LISTED, AND

APPROVED TO EXHAUST

A MINIMUM OF 200 CFM PER

LINEAR FOOT

OVER 600 DEGREE COOKING

EQUIPMENT

1. ALL ELECTRICAL "FIELD" CONNECTIONS AND RELATED INTERCONNECTIONS BY ELECTRICAL CONTRACTORS.
2. ALL PLUMBING "FIELD" CONNECTIONS AND RELATED INTERCONNECTIONS BY PLUMBING CONTRACTORS.
3. ALL ASSOCIATED HANGER MATERIALS BY INSTALLING CONTRACTORS.
4. 8" LONG FACTORY LOCATED AND WELDED HANGER BRACKETS AS SHOWN ON PLANS.
5. ALL CONNECTIONS FROM CAPTIVE-AIRE DUCT PER THE PLANS BY MECHANICAL CONTRACTORS.
6. ALL LIGHTS SHOWN INSTALLED BY CAPTIVE-AIRE ARE FACTORY PREWIRED PER THE PLANS. INTERCONNECTIONS BETWEEN HOODS AND TO SWITCHES BY ELECTRICAL CONTRACTOR.
7. LAMPS FOR LIGHT FIXTURES BY INSTALLING CONTRACTORS.
8. SEISMIC RESTRAINTS ARE RESPONSIBILITY OF INSTALLING CONTRACTOR.
9. INSTALLING CONTRACTORS ASSUME ALL RELATED RESPONSIBILITY FOR VERIFICATION OF DIMENSIONAL DATA CONTAINED ON THESE DOCUMENTS FOR ACCURACY, INTEGRATION, AND ADMINISTRATION OF CODE REQUIREMENTS IN EFFECT PRIOR TO ANY RELEASE FOR PRODUCTION OF EQUIPMENT SHOWN.
10. SIGNED AND "APPROVED" COPIES OF THIS DOCUMENT MUST BE RECEIVED BY THE FACTORY PRIOR TO COMMENCEMENT OF FABRICATION.
11. NOMINAL HOOD DIMENSIONS AS SHOWN ON DRAWINGS.

GENERAL NOTES

CUSTOMER APPROVAL TO MANUFACTURE:

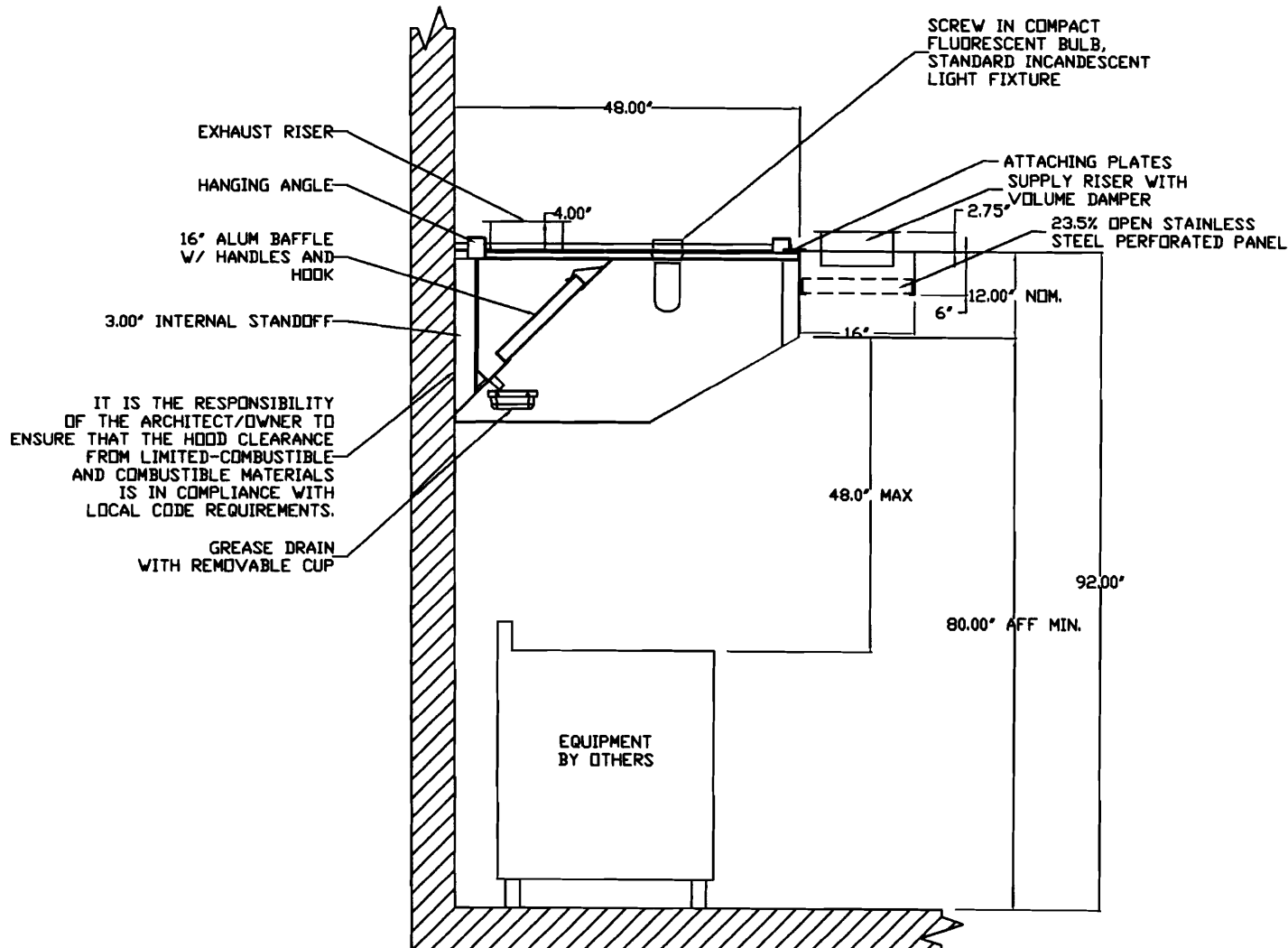
Approved as Noted

Approved with NO Exception Taken

Revise and Resubmit

SIGNATURE _____

Your Title _____ Date _____



SECTION VIEW - MODEL 4812SND-2-PSP-F

CAPTIVE AIRE

JOB Portland Job

LOCATION

DATE 3/9/2009

JOB # 917212

DWG # PortlandJob

DRAWN BY BFC

REV. 1.00

SCALE 8.5' x 11'

EXHAUST FAN INFORMATION

FAN UNIT NO.	FAN UNIT MODEL #	MODEL	TAG	CFM	S.P.	RPM	H.P.	Ø	VOLT	FLA	WEIGHT (LBS.)
1	NCA24HPFA	NCA24HPFA		3900	2.000	1073	3.000	1	230	17.0	258.91

HEATER/MUA FAN INFORMATION

FAN UNIT NO.	FAN UNIT MODEL #	BLOWER	HOUSING	TAG	CFM	S.P.	RPM	H.P.	Ø	VOLT	FLA	WEIGHT (LBS.)
2	NSAU2-G12	G12	NSAU.2		2730	0.500	713	1.000	1	230	6.8	282.93

FAN OPTIONS

FAN UNIT NO.	OPTION (Qty. - Descr.)
1	1 - Grease Box
	1 - Fan Base Ceramic Seal - For Grease Ducts
2	1 - Gravity Backdraft Damper for Size 2 Housing

FAN ACCESSORIES

FAN UNIT NO.	FAN UNIT TAG	EXHAUST			SUPPLY			
		GREASE CUP	GRAVITY DAMPER	WALL MOUNT	SIDE DISCHARGE	GRAVITY DAMPER	MOTORIZED DAMPER	WALL MOUNT
1		YES						
2					YES	YES		

CURB ASSEMBLIES

NO.	ON FAN	ITEM	SIZE
1	# 1	Curb	31.500"W x 31.500"L x 20.000"H Pitched Vented Hinged

CUSTOMER APPROVAL TO MANUFACTURE:Approved as Noted Approved with NO Exception Taken Revise and Resubmit SIGNATURE *John J. [Signature]*

Your Title _____ Date _____

CAPTIVE AIR

JOB Portland Job

LOCATION

DATE 3/9/2009

JOB # 917212

DWG # PortlandJob

DRAWN BY BFC

REV. 1.00

SCALE 8.5" x 11"

HOOD INFORMATION

HOOD NO.	MODEL	LENGTH	MAX. COOKING TEMP.	EXHAUST PLENUM RISER(S)					SUPPLY PLENUM RISER(S)					HOOD CONSTRUCTION	HOOD CONFIG.		
				TOTAL EXH. CFM	WIDTH	LENG.	DIA.	CFM	S.P.	TOTAL SUP. CFM	WIDTH	LENG.	DIA.		CFM	S.P.	END TO END
1	4812 SND-2-PSP-F	13' 0.00"	600 Deg.	3900	10"	37'		3900	-0.713"	2730					430 SS 100%	ALONE	ALONE

HOOD INFORMATION

HOOD NO.	FILTER(S)			LIGHT(S)			UTILITY CABINET(S)					FIRE SYSTEM PIPING	HOOD WEIGHT		
	TYPE	QTY.	HEIGHT	LENGTH	QTY.	TYPE	WIRE GUARD	LOCATION	FIRE SYSTEM		ELECTRICAL			SWITCHES	
1	Alum Baffle w/ Handles	1	16"	16"	4	Screw In Compact Fluore	NO							NO	496 LBS
		7	16"	20"											

PERFORATED SUPPLY PLENUM(S)

HOOD NO.	POS.	LENGTH	WIDTH	HEIGHT	RISER(S)				
					WIDTH	LENG.	DIA.	CFM	S.P.
1	Front	156"	16"	6"	10"	24"		910	0.149'
					10"	24"		910	0.149'
					10"	24"		910	0.149'

CAPTIVE-AIRE HOODS ARE
BUILT IN COMPLIANCE WITH



NFPA #96

NSF

UL 710 & ULC710 STANDARDS
E.T.L. LISTED 3054804-001

CUSTOMER APPROVAL TO MANUFACTURE:

Approved as Noted

Approved with NO Exception Taken

Revise and Resubmit

SIGNATURE _____

Your Title _____

Date _____

CAPTIVE-AIRE

JOB Portland Job

LOCATION _____

DATE 3/9/2009

JOB # 917212

DWG # PortlandJob

DRAWN BY BFC

REV. 1.00

SCALE 8.5' x 11'



Henckel Design and Fabrication

**134 Hartley Street
Portland, Maine
04103**

Phone: 1-207-318-2623

Fax: 1-207-772-8952

E-mail: petehenckel@maine.rr.com

**Site location; 245 Commercial St Portland Me
Subject; 2003 NFPA compliancy**

Please note that the installation of the type one hood system at 245 Commercial St in Portland will be code compliant under the 2003 NFPA mechanical codes for fire safety if there are any questions please feel free to call at any time.

Thank you Peter N Henckel

APR 30 2009

**•Restaurant Hoods•Boiler Breaching•HVAC Design•Curb Adapters and Unit Installations•
•Welded Ducting•Custom Welding Fabrication•**

Jeanie Bourke - 245 Commercial - hood

From: Jeanie Bourke
To: petehenkel@maine.rr.com
Date: 4/8/2009 3:33 PM
Subject: 245 Commercial - hood
CC: Deb Andrews

Hi Pete,
Since your voicemail is full.....
Both Deb Andrews and I will need more detail:

- on the exit of the duct to the roof exhaust. — PICS
- a view showing min. 10' from other openings. — Yes
- is the air intake on the roof as well? → sit on ground outside window
- a photo of the rear wall in relation to the alleyway would be beneficial. — yes pics
- section showing the dimension of the top of the hood to the combustible ceiling

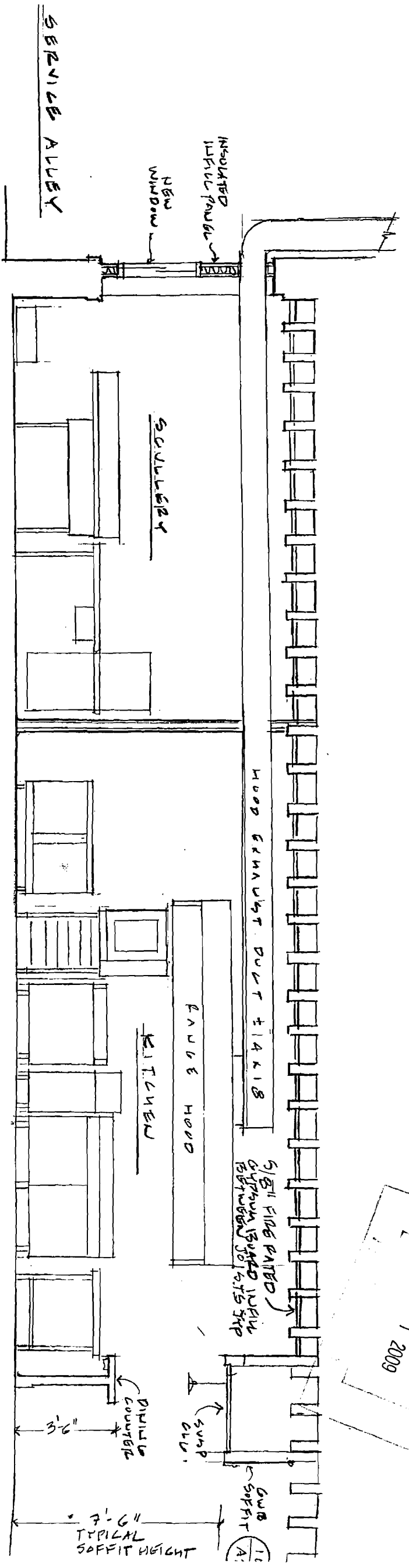
Thanks

Jeanie Bourke
Code Enforcement Officer/Plan Reviewer

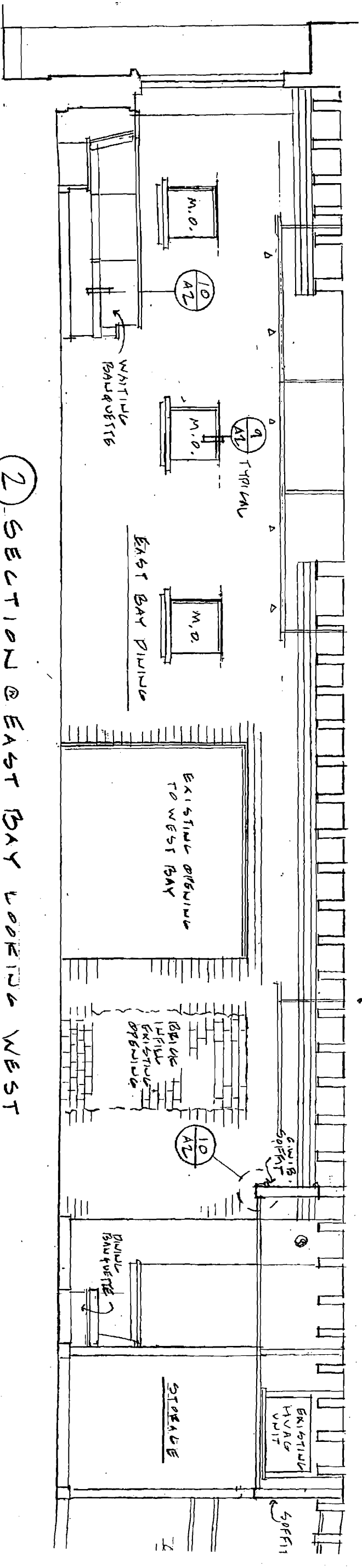
City of Portland
Planning & Urban Development Dept./ Inspections Division
389 Congress St. Rm 315
Portland, ME 04101
jmb@portlandmaine.gov
(207)874-8715

10" or
treated
w/ reduction
wrap or
Treatment.
per
Pete H.
5/13/09

MAY - 1 2009



1 SECTION @ EAST BAY LOOKING EAST



2 SECTION @ EAST BAY LOOKING WEST

