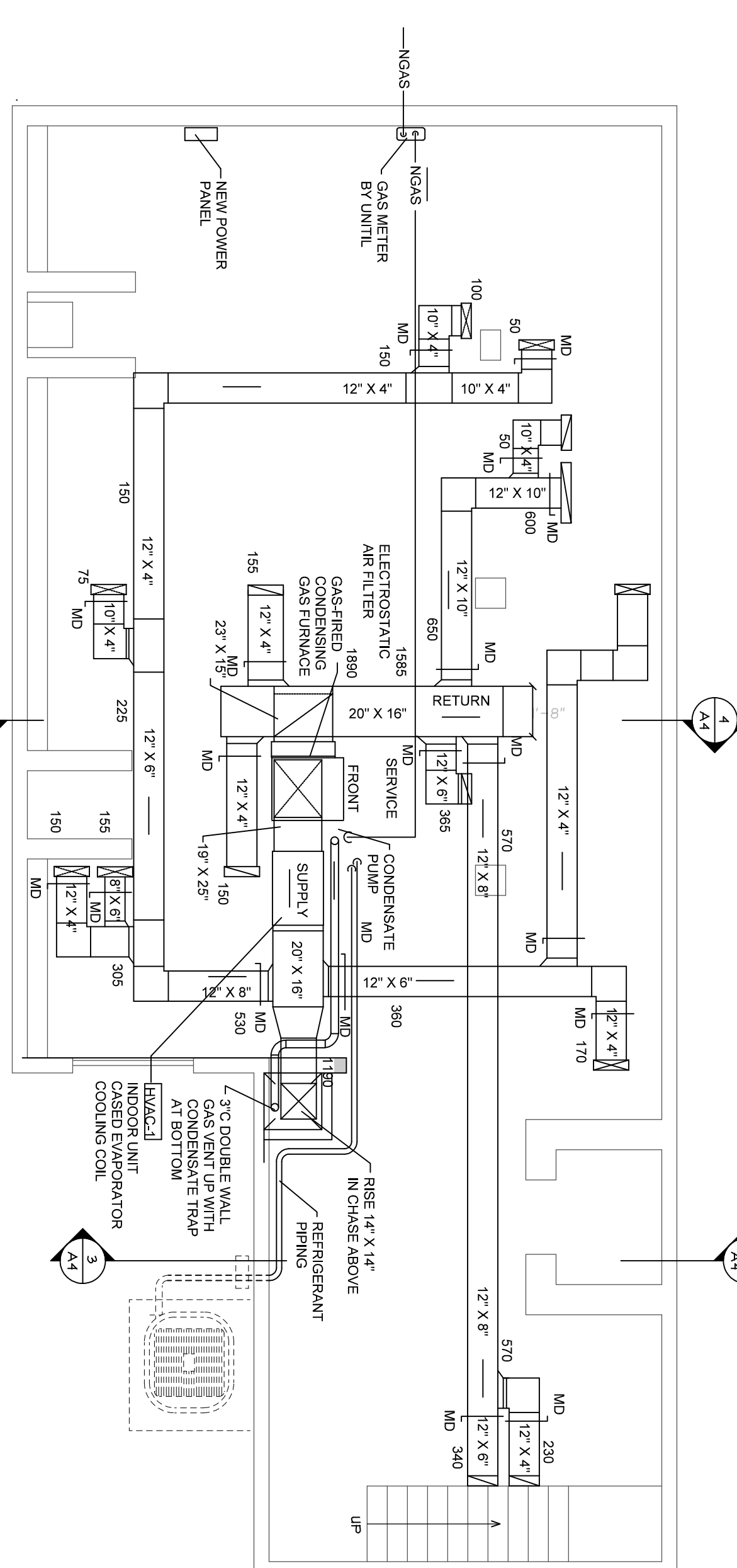
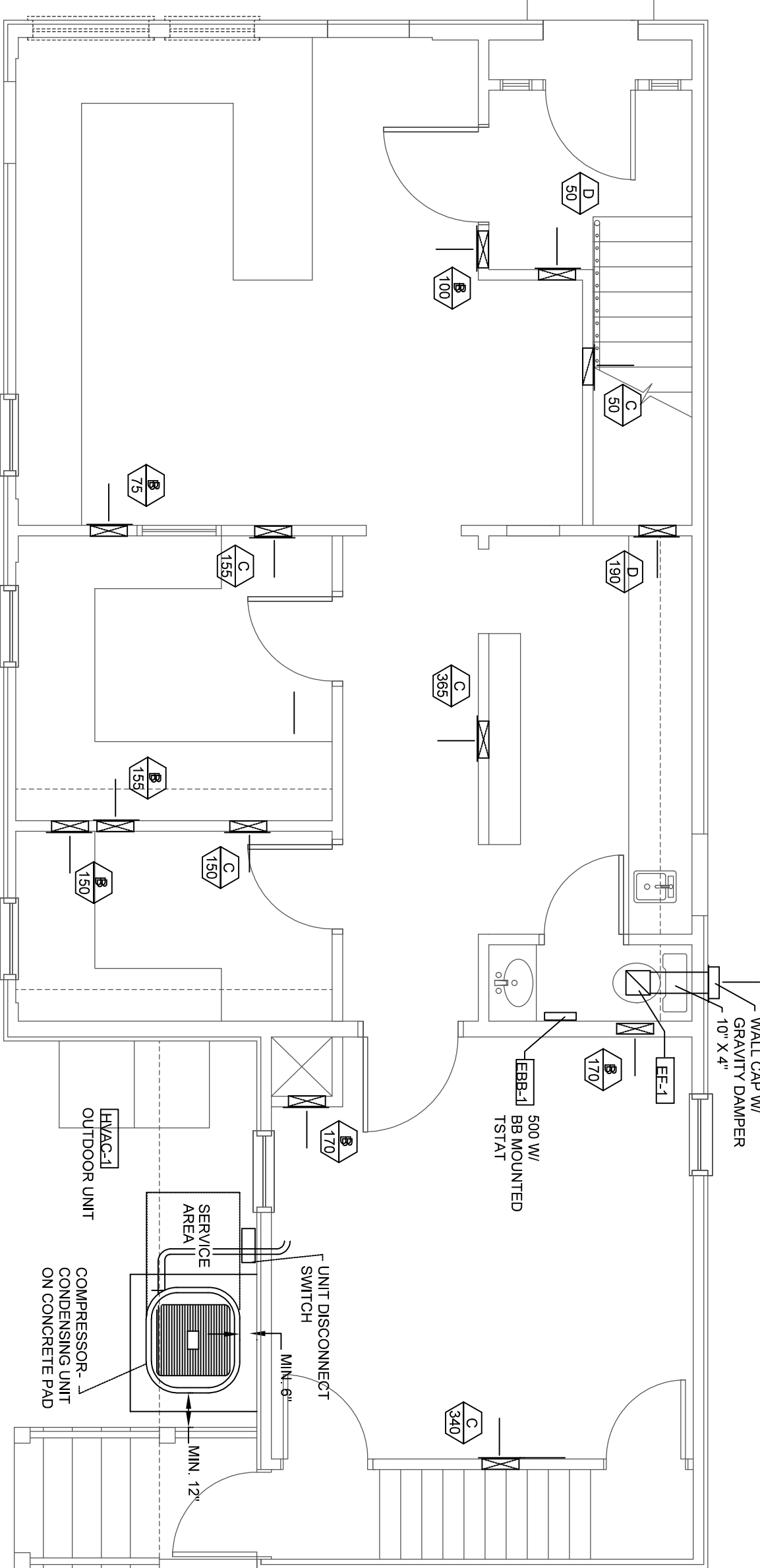


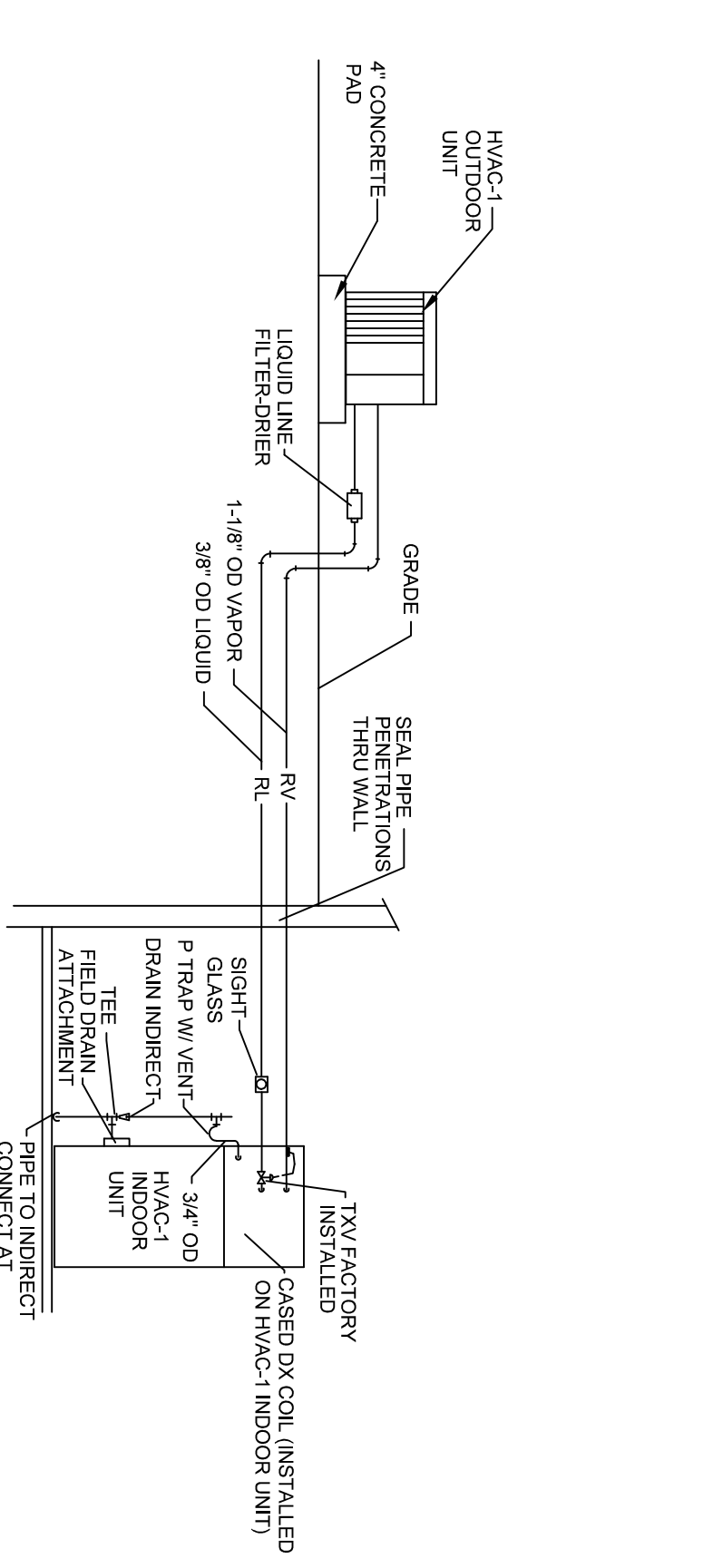
3 SECOND FLOOR MECHANICAL PLAN
SCALE: 1/4" = 1'-0"



1 BASEMENT MECHANICAL PLAN
SCALE: 1/4" = 1'-0"



2 GROUND FLOOR MECHANICAL PLAN
SCALE: 1/4" = 1'-0"



REFRIGERANT & DRAIN PIPING SCHEMATIC DIAGRAM

- UHVAC GENERAL NOTES**
- HVAC CONTRACTOR SHALL COORDINATE HVAC WITH ALL OTHER TRADES.
 - ALL DUCTWORK SHALL BE CONCEALED AND LOCATED ON WARM SIDE OF BUILDING INSULATION UNLESS NOTED OTHERWISE.
 - ALL DUCTWORK IS SHOWN DIMENSIONALLY. EXACT LOCATIONS ARE TO BE DETERMINED IN THE FIELD IN COORDINATION WITH OTHER TRADES.
 - ALL DUCT SIZES SHOWN ARE OUTSIDE DIMENSIONS.

UNIT	DESCRIPTION	SIZE	CFM	MAX. THROU (FT)	T.P.	PATTERN	NOTES
A	PERFORATED	41" X 12" W	100	20	0.05	-	MAGILL MODEL DDF-040
B	DOUBLE DEFLECTION SUPPLY/REGISTER	AS SHOWN	AS SHOWN	AS SHOWN	AS SHOWN	AS SHOWN	ALUMINUM HORIZONTAL FRONT BARS, VERTICAL ANODIZED FINISH HAFT & COOLER FIN SERIES
C	WALL RETURN	AS SHOWN	AS SHOWN	AS SHOWN	AS SHOWN	AS SHOWN	EGGCRATE W/ 1/2" X 1/2" GRID
D	REGISTER DEFLECTION SUPPLY/REGISTER	14" X 14"	AS SHOWN	AS SHOWN	AS SHOWN	AS SHOWN	ALUMINUM HORIZONTAL FRONT BARS, VERTICAL ANODIZED FINISH HAFT & COOLER FIN SERIES

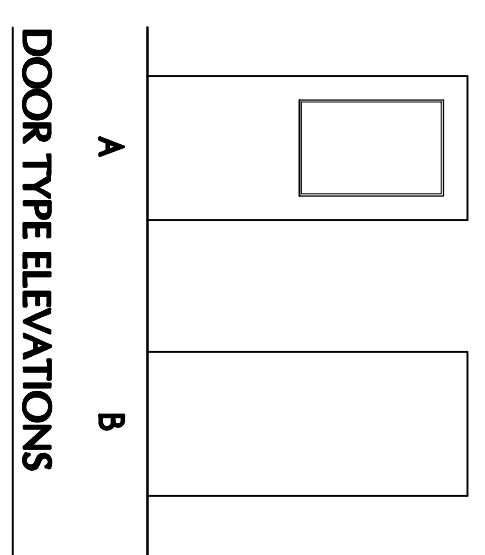
DAMPER #	SERVICE CFM	SP	SIZE	REMARKS
BD-1	1000	10.0	14C	SEE NOTE A
BD-2	1000	10.0	14C	SEE NOTE A
BD-3	1000	10.0	14C	SEE NOTE A
BD-4	1000	10.0	14C	SEE NOTE A

UNIT	CFM	ESP	HP	POWER	PHASE	NOTES
EF-1	70	0.5	1/8	115/200V	3.0	1
EF-2	70	0.5	1/8	115/200V	5.0	1

NUMBER	TYPE	WIDTH	HEIGHT	INSULATED	WEATHERSTRIP	THRESHOLD	HARDWARE	FRAME	REMARKS
IO-1	A	3'-0"	6'-8"	UD	EXISTING DOOR TO REMAIN
IO-3	A	3'-0"	6'-8"	UD	FLUSH BIRCH SOLID CORE, CLEAR FINISH, 24" X 34" LITE
IO-4	B	2'-8"	6'-8"	UD	FLUSH BIRCH SOLID CORE, CLEAR FINISH
IO-5	B	2'-8"	6'-8"	UD	FLUSH BIRCH SOLID CORE, CLEAR FINISH
IO-7	B	2'-8"	6'-8"	UD	FLUSH BIRCH SOLID CORE, CLEAR FINISH
IO-8	B	2'-8"	6'-8"	UD	FLUSH BIRCH SOLID CORE, CLEAR FINISH
IO-9	A	3'-0"	6'-8"	UD	FLUSH BIRCH SOLID CORE, CLEAR FINISH, 24" X 34" LITE
IO-1	B	2'-8"	6'-8"	UD	FLUSH BIRCH SOLID CORE, CLEAR FINISH
IO-2	B	2'-8"	6'-8"	UD	FLUSH BIRCH SOLID CORE, CLEAR FINISH
IO-3	B	2'-8"	6'-8"	UD	FLUSH BIRCH SOLID CORE, CLEAR FINISH
IO-4	B	2'-8"	6'-8"	UD	FLUSH BIRCH SOLID CORE, CLEAR FINISH
IO-5	B	2'-8"	6'-8"	UD	FLUSH BIRCH SOLID CORE, CLEAR FINISH

GENERAL DOOR NOTES

1. REFER TO FLOOR PLANS FOR HANDING.



DOOR TYPE ELEVATIONS

Consultants
Mechanical Engineer
Whitney Engineering

10 Uniform Street
Portland, Maine
04101
Phone: 207.761.5911
Fax: 207.761.2105
Email: stephen@the5.com

5 South St.
Portland, Maine



Job No.: 0711
Date: June 28, 2009
Scale: 1/4" = 1'-0"
Drawn by: JSM
Checked by: JSM

Issued for Building Permit