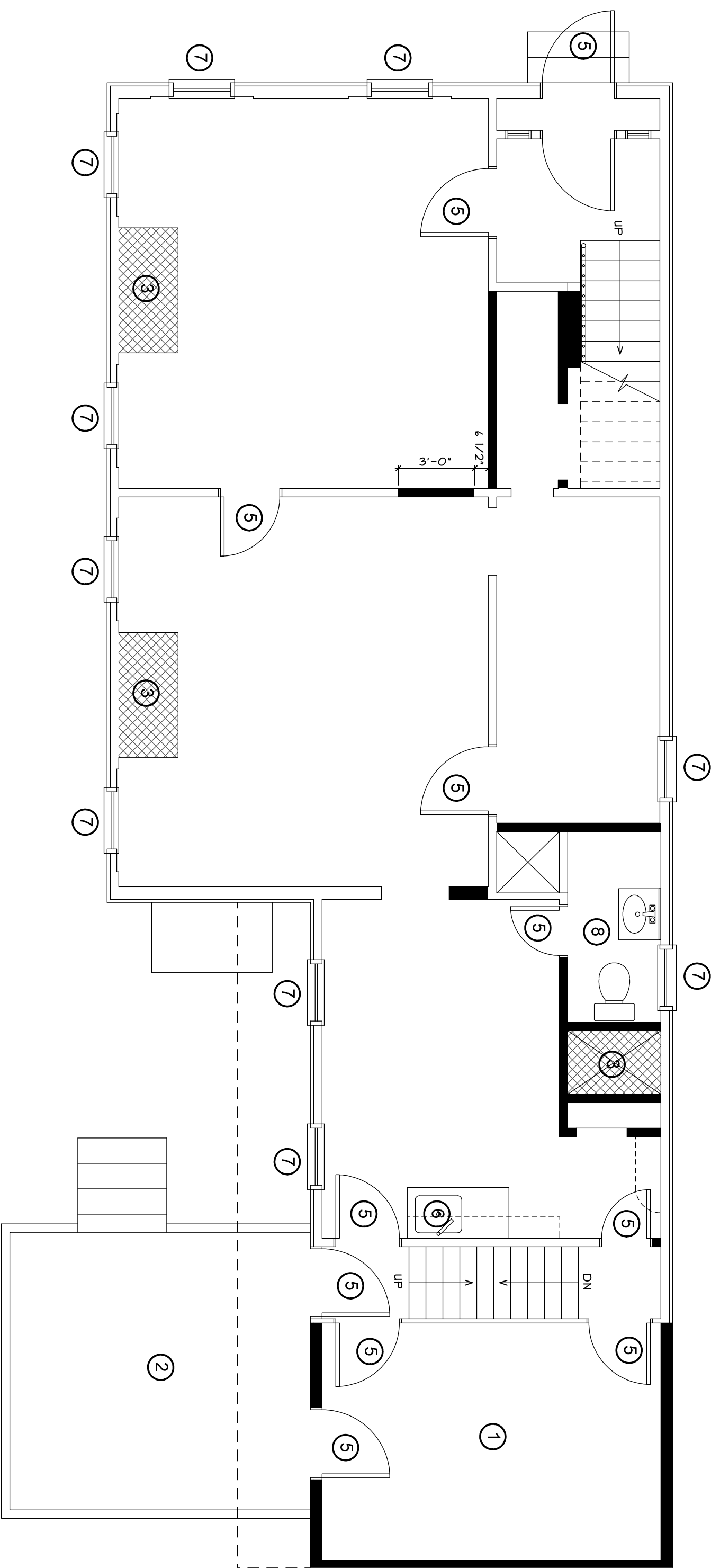


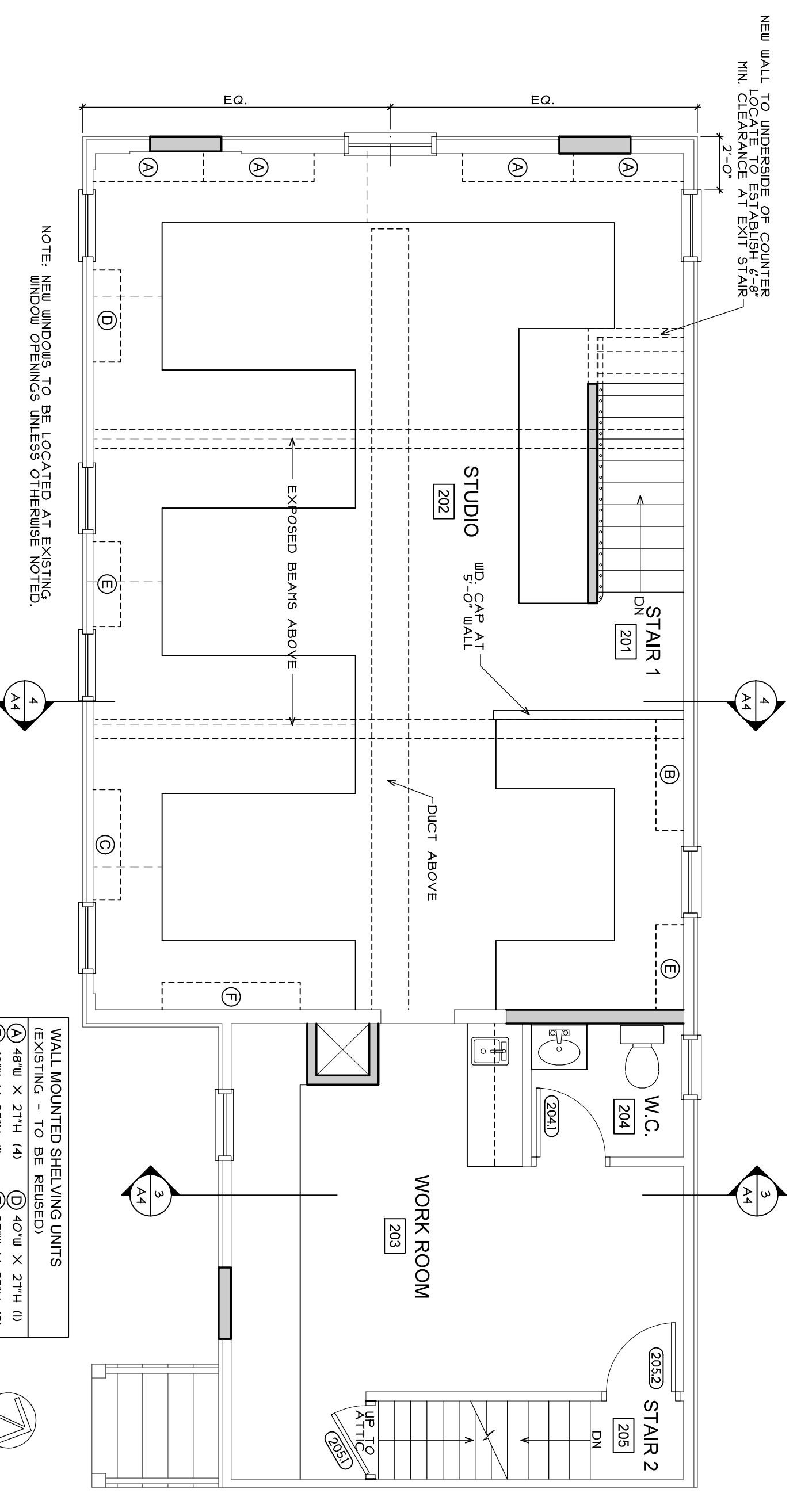
4 SECOND FLOOR DEMOLITION PLAN
SCALE: 1/4" = 1'-0"



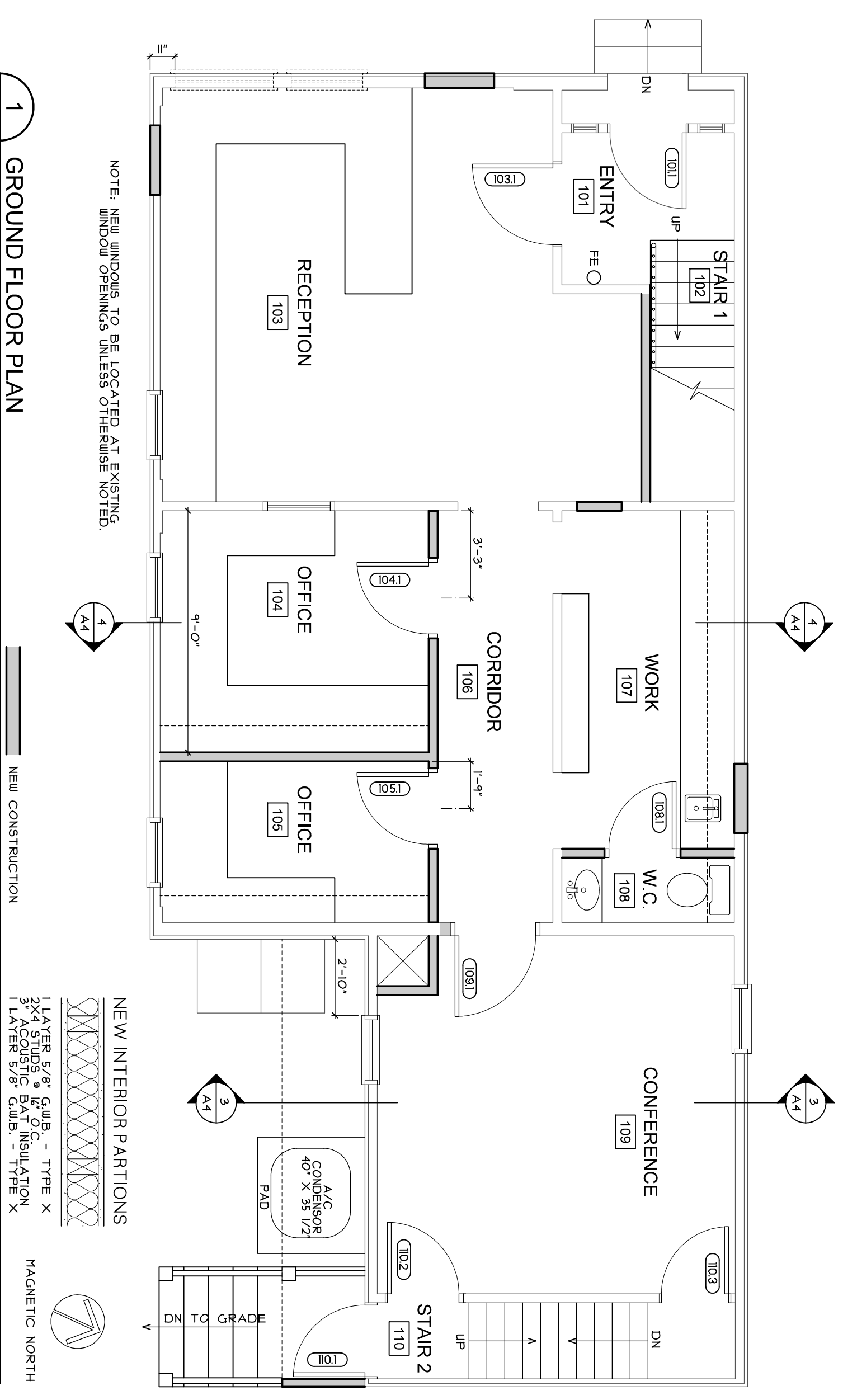
3 GROUND FLOOR DEMOLITION PLAN
SCALE: 1/4" = 1'-0"

DEMOLITION KEY			
1	REMOVE EXISTING SHED	5	REMOVE EXISTING PARTITION
2	REMOVE EXISTING DECK	6	REMOVE EXISTING DOOR
3	REMOVE EXISTING MASONRY TO 1ST FLOOR	7	REMOVE EXISTING SINK
4	REMOVE EXISTING BATHTUB	8	REMOVE EXISTING WINDOW
		9	REMOVE EXISTING FIXTURES

MECHANICAL AND PLUMBING NOTES:
REPAIRS INCLUDING BASEBOARD FRAMES,
2" BORE HOLES TO AND ALL PIPING
BASEMENT TO BE STUBBED OFF AT BASEMENT.
GAS LINES AT EXISTING FITTINGS ARE TO BE STUBBED OFF AT BASEMENT.
DISCONNECTED WATER LINES ARE TO BE STUBBED OFF AT BASEMENT.



2 SECOND FLOOR PLAN
SCALE: 1/4" = 1'-0"



1 GROUND FLOOR PLAN
SCALE: 1/4" = 1'-0"

Revisions

Consultants
Mechanical Engineering
Whitney Engineering

Stephen Blatt
Architects

10 Durham Street
Post Office Box
583 Oldis
Portland, Maine
207.762.9911
207.762.2105
Fax: 207.762.2105
Email: sblatt@stephenblatt.com

5 South St.
Portland, Maine
Additions & Renovations



Job No.: 0211
Date: June 26, 2009
Scale: 1/4" = 1'-0"
Drawn By: SBL
Checked By: SBL
\$0

Demolition Plans: 182
Floor Plans: 182

A1

Issued for Building Permit