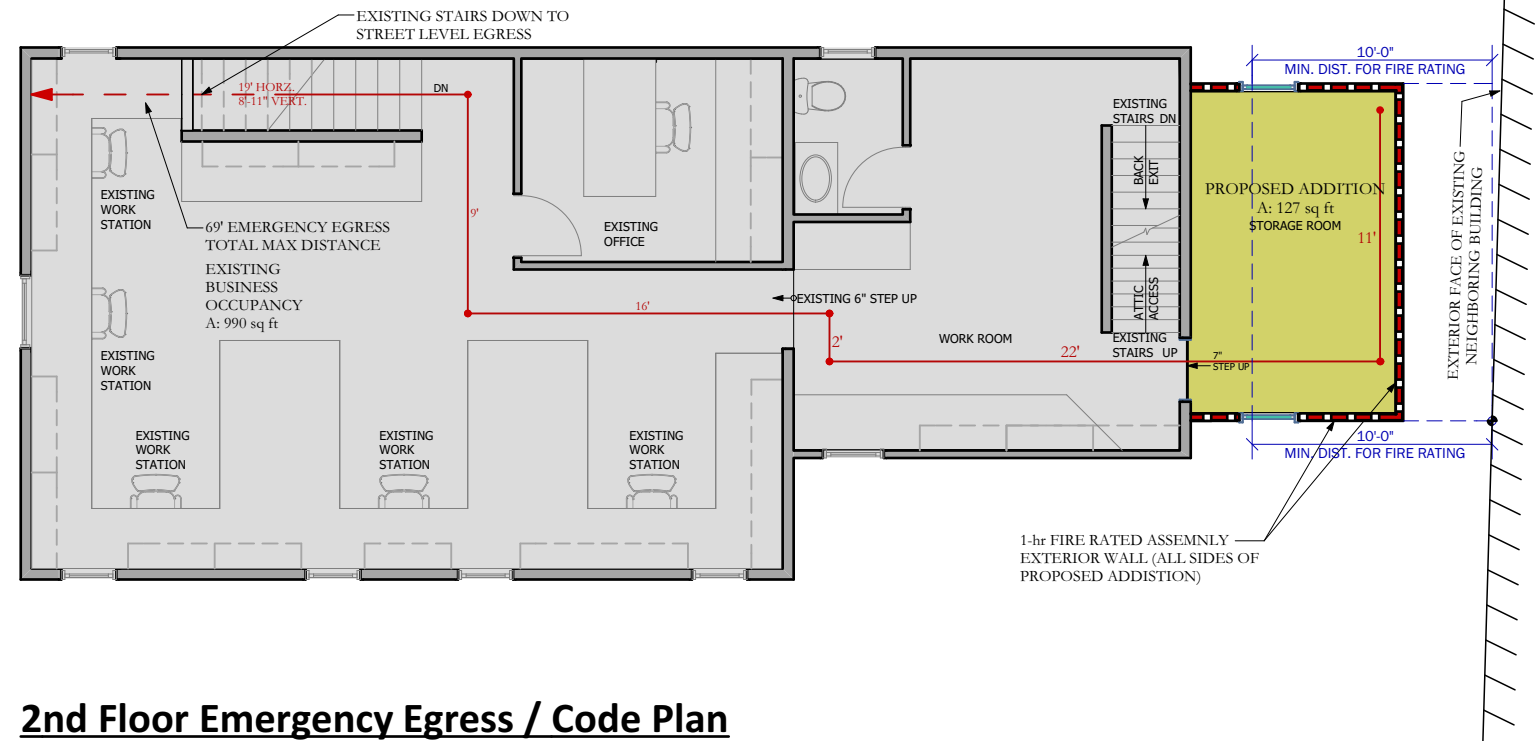


1st Floor Emergency Egress / Code Plan

LEGEND
 1-hr RATED EXTERIOR WALL ASSEMBLY, ULLISTING U305 (SEE BLDG SECTIONS)



2nd Floor Emergency Egress / Code Plan

International Building Code 2009 Summary Review

Construction Type:	5-B, Unprotected Combustible, No Sprinkler System	
Building Area:	Maximum Allowable Area:	9,000 SF
	Total Existing Building Area:	1,980 SF
	Proposed Area of Expansion:	224 SF
	Proposed Total Area W/ Expansion:	2,204 SF
Occupancy Use:	B Business (Professional Services Office) Occupant Load	23 (100 SF Floor Area per occupant) IBC Table 1004.1.1
Building Height	Maximum Allowable Height:	40 feet (2 Stories)
	Existing Building Height:	29'-3" Above Fin. Grade (2 Stories + unoccupied attic)
	Proposed Addition Height:	(2 Stories + unoccupied attic) 19'-1" Above Finished Grade
	Mezzanines nor interstitial spaces not counted as stories per NFPA 4.6.3 (3) & (4).	
Means of Egress	Required Number of Exits:	1 (Under 50 occupants, IBC Table 1015.1)
	Maximum Common Path of Travel:	75 feet
	Actual Travel Distance	69 feet from 2 nd floor proposed Addition
	Maximum Dead End Corridor Length:	20 Feet IBC 1018.4
	Minimum Corridor width	36 inches (Occupancy under 50 persons) IBC 1018.2
	Corridor Fire Separation Rating	0 hours (under 30 Occupants, IBC Table 1018.1)
	Fire Separation Distance:	Exterior Walls
	Fire Resistance Rating:	1 hour for greater than 5 ft., but less than 10 ft. from Existing Abutting Business & Residential use building (Table 602)
	Actual Distance:	3'-6" from exterior face of new siding to neighboring building
	Actual Distance:	2'-6" from new roof overhang to neighboring building
	Allowable Openings:	10% openings allowed for 5 to less than 10 ft, IBC Table 705.8
	Actual Opening:	5 SF window in 157 SF wall (Less than 4%)
	Proposed Window is	8'-1" from abutting existing building



NFPA 101 2009 Life Safety Code Summary Review

Construction Type:	5-000, Unprotected Combustible Fire Suppression System	NFPA 8.2.1 (referencing NFPA 220, Table 3.1) None
Building Height	2 Levels + Unoccupied Partial Attic	
Occupancy Use:	Existing B Business: Hazard Classification: Occupant Load	Professional Services Office (NFPA Chapter 39) Light, (NFPA 13, 5.2 and NFPA 13 ANNEX "A", A5.2) 23, based on 100 SF Floor Area / occupant NFPA Table 7.3.1.2
Means of Egress:	Required Number of Exits: Maximum Common Path of Travel: Maximum Travel Distance to Exit: Actual Travel Distance Egress from Upper Floor Allowed: Actual Egress from Upper Floor: Unenclosed Vertical Openings & Exit stairs: Maximum Dead End Corridor Length: Corridor Fire Separation Rating Egress Door clear width: Allowable Existing Stair Width Allowable New Corridor Min. Width: Allowable Existing Corridor Min. Width:	1 per Existing Business Occupancy, NFPA 39.2.4.3 & 39.2.4.4) Not limited under 30 occupants (NFPA 39.2.5.3.2) 200 ft. (NFPA 39.2.6.2) 69 ft. from 2 nd floor proposed back storage room addition) 15'-0" per NFPA 101, Ch. 39.2.4.3(3) 10'-0" Permitted per NFPA 39.3.1.1, (1) & (2) 50 ft. (NFPA 39.5.2) 0 hours (Single Occupancy Use, per NFPA 7.1.3.2.1) 32 inches (NFPA 7.2.1.2.3.2) 36 inches per (NFPA Table 7.2.2.2.1.1 (b)) 36 inches per (NFPA 7.4.4.1 (2)) 28 inches per (NFPA 7.3.4.1.2)
Fire Alarm system not required per NFPA 39.3.4.1 (Building is 3 stories or less in height and under 100 occupants)		

